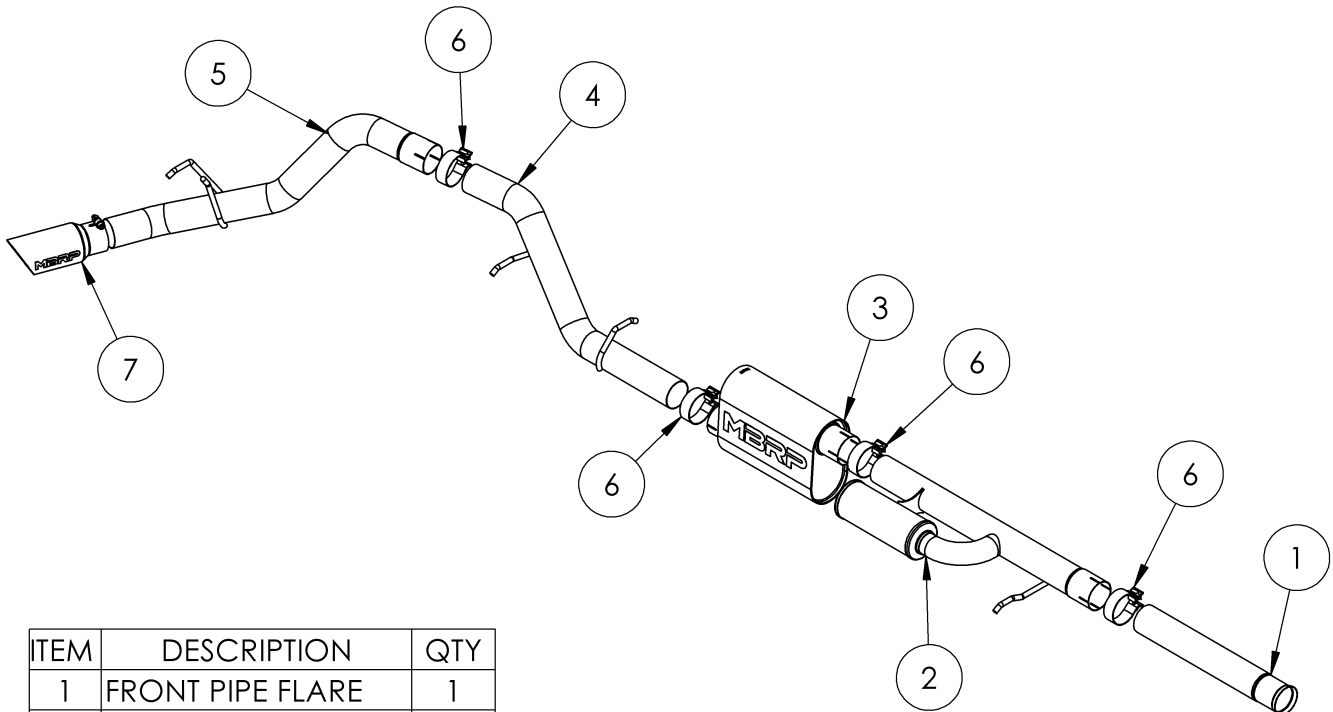


S5061

2021-UP CHEV/GMC TAHOE/YUKON,
SUBURBAN/YUKON XL, 5.3L, CAT-BACK, 3.0"
SINGLE SIDE EXIT

MBRP®



ITEM	DESCRIPTION	QTY
1	FRONT PIPE FLARE	1
2	FRONT PIPE	1
3	MUFFLER	1
4	OVER-AXLE PIPE	1
5	TAIL PIPE	1
6	3.0" CLAMP	4
7	TIP	1

Refer to this LOT NUMBER when contacting customer service: _____

PLEASE READ BEFORE STARTING INSTALLATION

While MBRP has made every effort to ensure that all components of this system are of superior quality and properly packaged, it is the installer's responsibility to ensure the following before removal of the factory exhaust:

- that ALL components shown above are present.
- that ALL mating components fit together.
- that there are no damaged components.
- that the system you have purchased is appropriate for your vehicle year, model and configuration.
- that the system will not interfere with any modifications previously installed or planned.
- that you have read and understand these instructions.

If you have any questions or are uncertain about any aspect of the installation of this system to your vehicle please contact your dealer before commencing installation.

MBRP

Removal of Stock System



Figure 1

1. Apply a penetrating lubricant liberally to all exhaust fasteners, hangers, and rubber isolators.

2. Remove the clamp after the catalytic converter and save the clamp as it will be reused during the installation.

Refer to Figure 1.

3. Remove the two nuts securing the tail pipe. Remove the tail pipe from the vehicle.

Refer to Figure 2.

4. Remove the 4 bolts holding the sway bar to the frame and lower the sway bar.

Refer to Figure 3.

5. Remove the hangers from the rubber isolators and remove the exhaust from the vehicle. The exhaust must go forward past the connection point, then below the differential housing and out towards the back of the vehicle.



Figure 2



Figure 3

Installation of MBRP Performance Exhaust

1. Confirm the required length of the **Front Pipe Flare** for the vehicle application. Cut the **Front Pipe Flare** to length if required and loosely install with the factory clamp previously removed.

Refer to Figures 4 and 5.



Figure 5

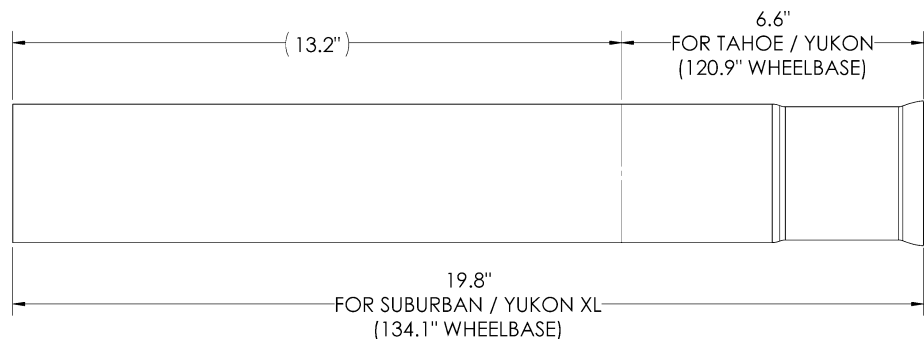


Figure 4

2. Install the **Front Pipe** onto the **Front Pipe Flare** using a **3.0" Band Clamp**, and the factory rubber isolator. Do not fully tighten any clamps until the entire system is installed and aligned.

Refer to Figure 6.

MBRP



Figure 6

3. Install the **Muffler** onto the end of the **Front Pipe** using a **3.0" Band Clamp**. Align the **Muffler** vertically so that the outlet is below the inlet. Refer to **Figure 7**.

4. Slide a **3.0" Band Clamp** onto the rear of the **Muffler**. Feed the **Over-Axle Pipe** into place from the front and install into the **Muffler**. Install the hangers on the **Over-Axle Pipe** into the factory rubber isolators. Refer to **Figure 7**.



Figure 7

5. Install the **Tail Pipe** onto the **Over-Axle Pipe** using a **3.0" Band Clamp**. Install the hanger into the factory rubber isolator.

6. Install the **Exhaust Tip** to your liking. Refer to **Figure 9**.

7. Align the edge of each band clamp with the edge of the joint it is connecting. Tighten all hardware and clamps, starting at the front and working rearward to secure the system. Check along the full length of the exhaust system to ensure there is adequate clearance for fuel lines, vent lines, brake lines, frame, bodywork, suspension, and any wiring, etc. If there is any interference detected, relocate, or adjust to provide adequate clearance. Ensure all clamp connections are secure and components are unable to rotate or slide. Band clamps require approximately 45 lb-ft (60 N-m) of torque. Verify clearances, system security and band clamp torque after 30-60 miles (50-100 km) of driving.



Figure 8

Congratulations! You are ready to begin experiencing the improved power, sound and driving excitement of your **MBRP** performance exhaust system. We know you will enjoy your purchase.



Figure 9