



# INSTALLATION INSTRUCTIONS

**MAKE:** GM

**MODEL:** Silverado HD/Sierra HD (Includes Denali Models)

**YEAR:** 2017 - 2019

**ENGINE:** V8-6.6L (td) Duramax

**WHEELBASES:** Crew Cab/Long Bed w/ 8 ft. Bed (WB 167.7"); Crew Cab/Short Bed w/ 6.6 ft. Bed (WB 153.7")

## 5" DPF-Back Aluminized

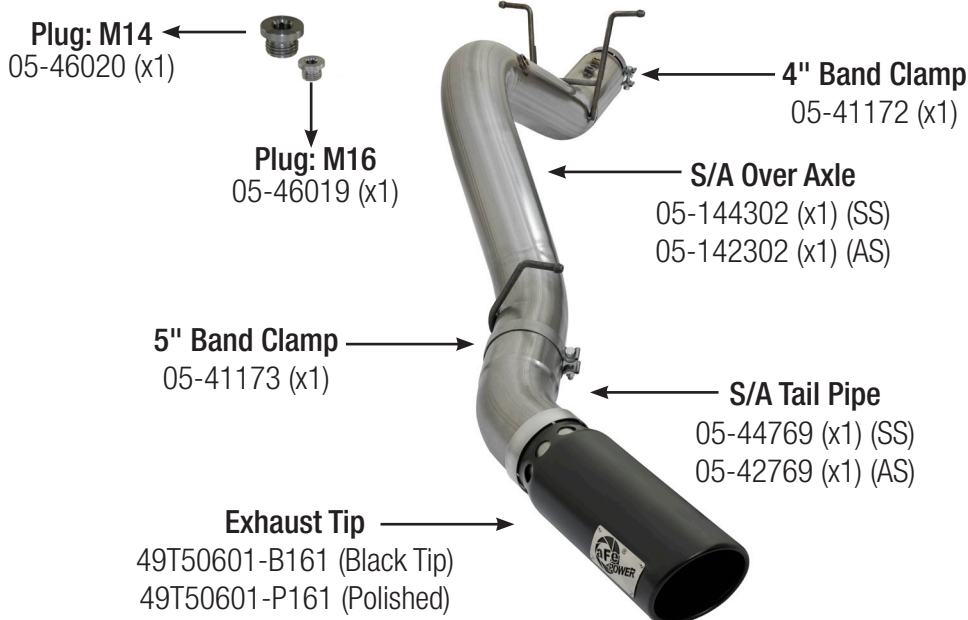
49-04085-B (Black Tip)

49-04085-P (Polished Tip)

## 5" DPF-Back Stainless Steel

49-44085-B (Black Tip)

49-44085-P (Polished Tip)



Professional installation is highly recommended. (Read instructions prior to installation). Make sure to always have at least (2) stands or jacks on hand to support the removal of OE system. Also for the installation of aFe system. Any Removal of rubber isolation mounts may require using a spray lubricant such as WD40 and a pry bar.

**Step 1:** Read Instructions prior to installation) Professional installation is highly recommended for this procedure. Save time by spreading aFe exhaust components alongside your vehicle. Support stands are needed prior and during installation. Do not tighten any of the band clamps provided until the entire system has been fully installed and aligned

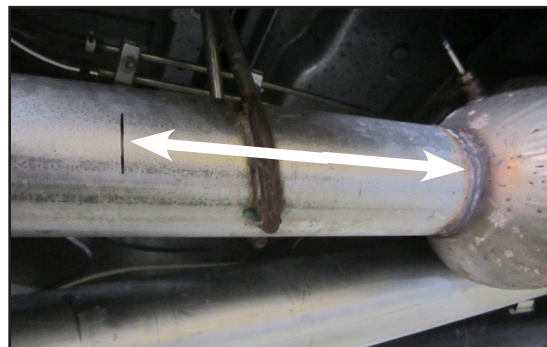
**NOTE: Cutting Stock Exhaust Off is Required!**

**Step 2:** Remove NOx sensor. If your install is for a Crew/Cab Long-Bed 167.7" wheelbase. Do not remove the EGT sensor or the EPD sensor. All other wheelbase and cab configuration, must remove all sensors from tail-pipe section.

**Step 3:** Using a visible ink; measure the correct inches indicated below. From the rear weld line of the DPF (Diesel Particulate Filter) place a mark (As shown in Figure A).

**CAB Configurations:**

- Crew/Cab Short-Bed 153.7" Measure 3" Back From Weld Line. The mark will indicate your cut location.
- Crew/Cab Long-Bed 167.7" Measure 26" Back From Weld Line. The mark will indicate your cut location.



(Figure A)

**Step 4:** Cutting will be done under vehicle, make sure support stands are supporting weight before cutting stock exhaust. Remove the rear tail-pipe section after it has been cut.

**Step 5:** Install over-axle pipe. **NOTE:** CC/SB 153.7"wb, plug all OE sensors back into aFe exhaust. CC/LB 167.7"wb, insert sensor plugs provided to aFe over-axle.

**Step 6:** Install tail-pipe turnout onto over-axle tube. Make sure there is at least 1" clearance between exhaust pipe and spare tire heat shield.

**Step 7:** Install tip to desired position. Tighten down band clamp on tip only.

**Step 8:** Begin to align exhaust components and fully tighten down all band clamps.

**Step 9:** Turn vehicle on and check all sensors and band clamps for exhaust leaks.

**Step 10:** Your installation is now complete. aFe POWER recommends tightening all exhaust components after 50-100 miles.