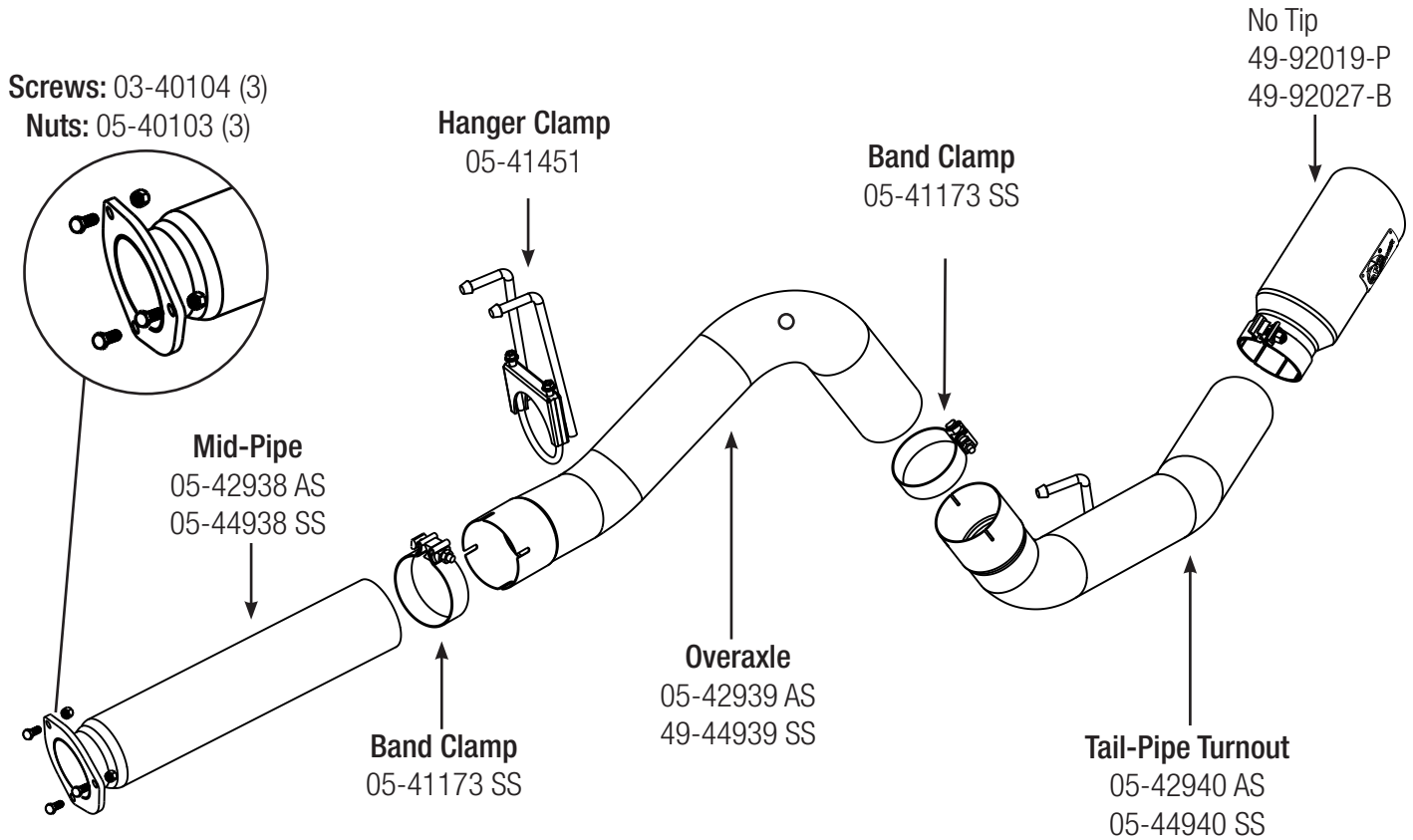




## INSTALLATION INSTRUCTIONS

**MAKE:** FORD  
**MODEL:** POWER STROKE  
**YEAR:** 15-16  
**ENGINE:** V8-6.7L (td)  
**WHEELBASE:** All except Cab & Chassis

**5" DPF-Back Aluminized**  
49-03064 (No Tip)  
49-03064-P (Polished Tip)  
49-03064-B (Black Tip)  
**5" DPF-Back Stainless Steel**  
49-43064 (No Tip)  
49-43064-P (Polished Tip)  
49-43064-B (Black Tip)



**Step 1: (Read Instructions prior to installation)** Loosen mounting flange at rear of particulate filter before muffler. Remove the stock exhaust from the rear of the truck working your way forward. Take caution not to damage the factory isolation mounts and gasket as they will be reused. **It is recommended to not fully tighten the clamps until the entire system has been installed.**

**Step 2:** For faster installation spread the pieces of the exhaust along side of your vehicle according to the diagram shown.

**Step 3:** Install over-axle/tail-pipe utilizing the factory isolation mounts.

**Step 4:** Install the mid-pipe using original gasket and supplied hardware. Regular cab and quad cab short bed will require that the mid-pipe be cut at the end opposite from the flange. You will need to measure from the flange to the slip joint. Measure twice, cut once. Crew cab long bed will use the mid-pipe as is.

**Step 5:** Install the exhaust tip on the tail-pipe. Adjust for alignment and tighten all connections. Your installation is now complete. It is recommended to re-tighten all exhaust components after the first 50-100 miles.

**Step 6:** Tighten up nox sensor bung, located on overaxle tube.

### NOTES:

- aFe recommends that the tail-pipe be at least 1/2"-1" away from any body panels to avoid heat related body damage. **Tighten and secure.**

**Caution:** Allow time for your vehicle to cool down prior to installation. When working on or under your vehicle proceed with caution. Exhaust systems reach high temperatures and may cause serious burns. Wear protective safety equipment; eye goggles and gloves to ensure a safe installation. **aFe recommends professional installation on our products.**