



# INSTALLATION INSTRUCTIONS

MAKE: GM

MODEL: Colorado/Canyon

YEAR: 2016-2020

ENGINE: I4-2.8L (td) Duramax

WHEELBASE: CC/SB (128.3"); CC/LB (140.5"); EC/LB (128.3")

3" DPF-Back

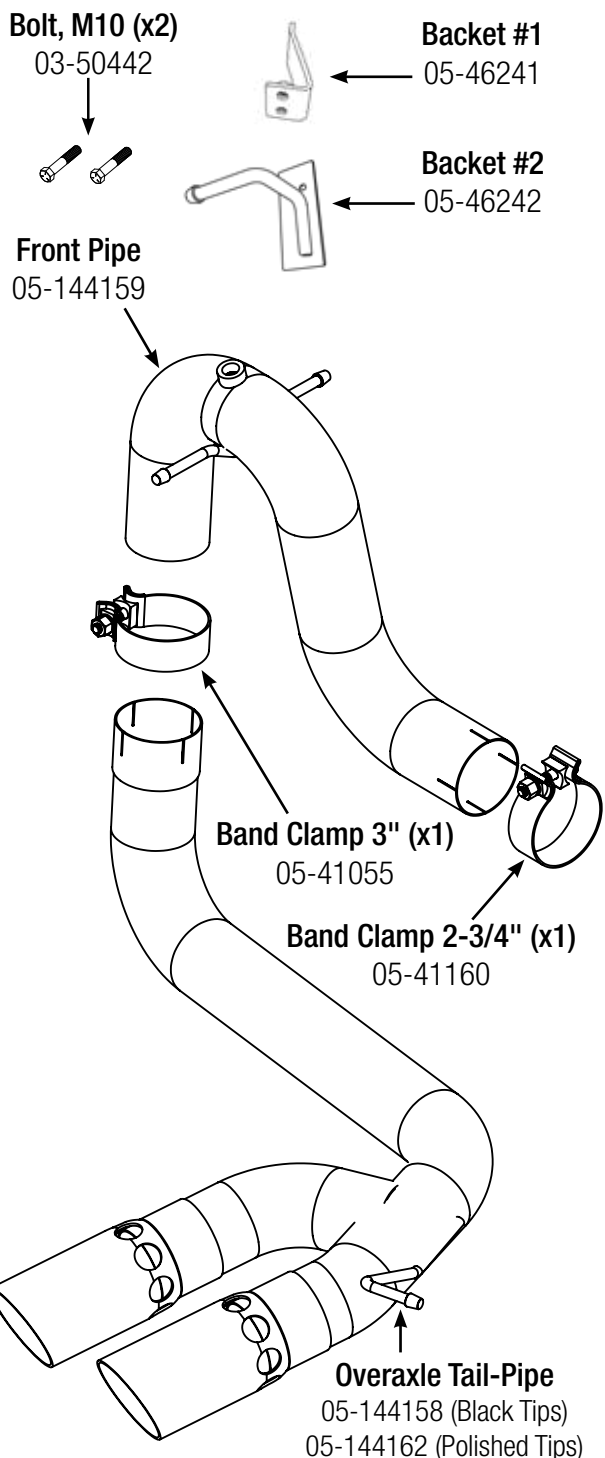
409 Stainless Steel

49-44065-P (Polished Tips)

49-44065-B (Black Tips)

## aFe recommends professional installation on our products.

Caution: Allow time for your vehicle to cool down prior to installation. When working on or under your vehicle proceed with caution. Exhaust systems reach high temperatures and may cause serious burns. Wear protective safety equipment; eye goggles and gloves to ensure a safe installation.



**Step 1:** (Read Instructions prior to installation) for faster removal and installation of exhaust a trained professional is recommended for this procedure. Secure DPF (Diesel Particulate Filter) with jack stands. The stock exhaust system will require cutting therefore professional assistance and proper tube cutting tools is always recommended.

**Step 2:** Cutting will be required. Use a visible marker; Measure from the rear weld of the DPF. (Use **Figure A** as reference). Place a mark according to the Cab/Bed (WB) Configurations listed below.

- CC/SB, EC/LB (128.3" WB) Measure 6" from weld Shown **Figure A**.
- CC/LB (140.5" WB) Measure 18" From weld

**Step 3:** (Measure twice cut-once.)

**Step 4:** Once you have cut the stock Over-Axle tube away from the (DPF), remove the Nox sensor with a 15/16" wrench, and then remove Over-Axle safely.

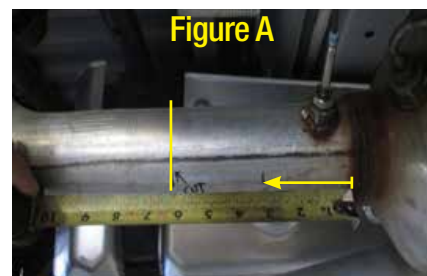
**Step 5:** Install the front pipe into place using the provided 2.75" band clamp and OE Isolation Mounts

**Step 6:** Install provided bracket using provided hardware as shown in **Figure B**.

**Step 7:** Install the Rear tube using provided 3" band clamp and the rear OE isolation mount.

**Step 8:** Align exhaust system and tighten all band clamps, re-install the nox sensor.

**Step 9:** Your installation is now complete. It is recommended to re-tighten all exhaust components after 50-100 miles.



NOTES: aFe recommends that the tailpipe be at least 1/2"-1" away from any body panels to avoid heat related body damage. Tighten and secure.