

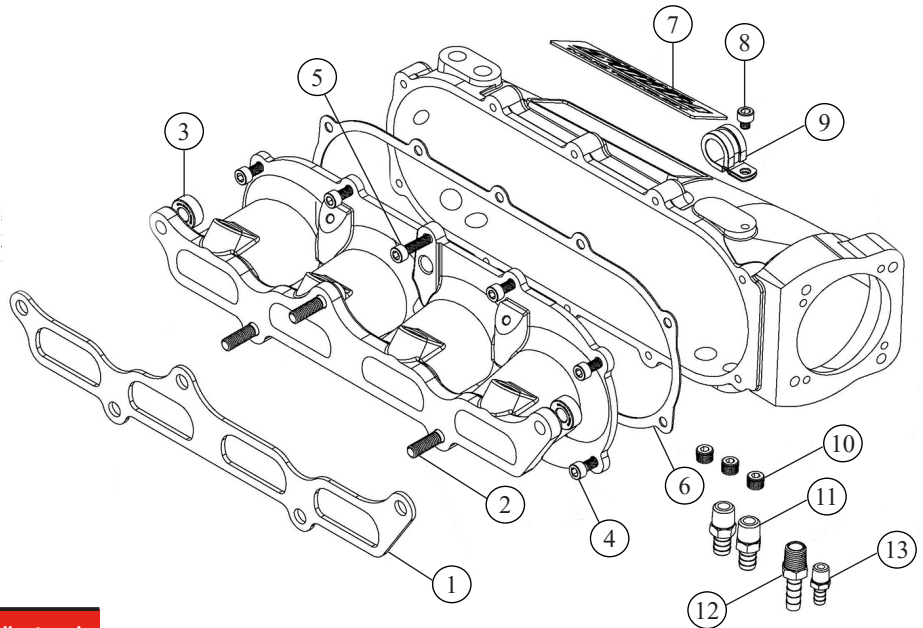
## Part No. 307-05-1000 - Ultra Street Intake Manifold L15B

### PARTS INCLUDED (SEE DIAGRAM)

1. THERMAL GASKET
2. BOLT M8x1.25x35 (X3)
3. SPACER, 20MM OD X 9.0MM ID X 8MM (X2)
4. Bolt, AHCS, M6x1.0x15mm (X9)
5. Bolt, AHCS, M6x1.0x30mm
6. GASKET
7. BADGE, SKUNK2 ULTRA
8. BOLT AHCS M6x1.0x6MM
9. P-CLAMP
10. Plug, NPT (X3)
11. FITTING, BARB (X2)
12. BARBED HOSE FITTING 5/16"
13. FITTING, 0.25 IN BARB

### TOOLS REQUIRED

- > Screwdriver Set
- > Needle Nose Pliers
- > 3/8" & 5/16" 10mm Socket
- > 10mm Ratcheting Wrench
- > Metric Allen Bit Set
- > Torque Wrench



Install Time

4 HOURS



Installer Level

MODERATE

### STEP-BY-STEP REMOVAL

PLEASE READ CAREFULLY BEFORE PROCEEDING WITH INSTALL

INSTALLATION SHOULD BE PERFORMED BY AN EXPERIENCED AUTOMOTIVE MECHANIC / TECHNICIAN

CHECK KIT FOR ANY DAMAGES OR MISSING COMPONENTS BEFORE STARTING

*Before installation, thoroughly flush the inside of your intake manifold with water and let completely dry*

(REFER TO FACTORY SERVICE MANUAL BEFORE STARTING)

#### STEP 1 BATTERY

Disconnect negative battery terminal.

#### STEP 2 INTAKE TUBE

Disconnect the intake tubing/pipe from the throttle body.

#### STEP 3 COOLANT LINES

Disconnect and cap off the coolant lines from the throttle body temporarily.

#### STEP 4 THROTTLE BODY/VACUUM LINES

Remove the throttle body from the intake manifold plenum.  
Label and disconnect all the vacuum lines to/ from the OEM intake manifold.

## STEP-BY-STEP INSTALLATION

### INSTALLATION

#### STEP 1 BATTERY

Loosen and rotate the positive battery cable on the starter. Rotate the cable up towards the cylinder head as much as possible and tighten.

#### STEP 2 MANIFOLD GASKET

Clean the intake manifold gasket surface. Install the Skunk2 thermal gasket.

#### STEP 3 MANIFOLD

Install the Skunk2 Ultra Street Intake Manifold. Torque bolts ② from diagram to 18 ft. lbs. Install any/ all sensors and emissions equipment.

#### STEP 4 VACUUM LINES

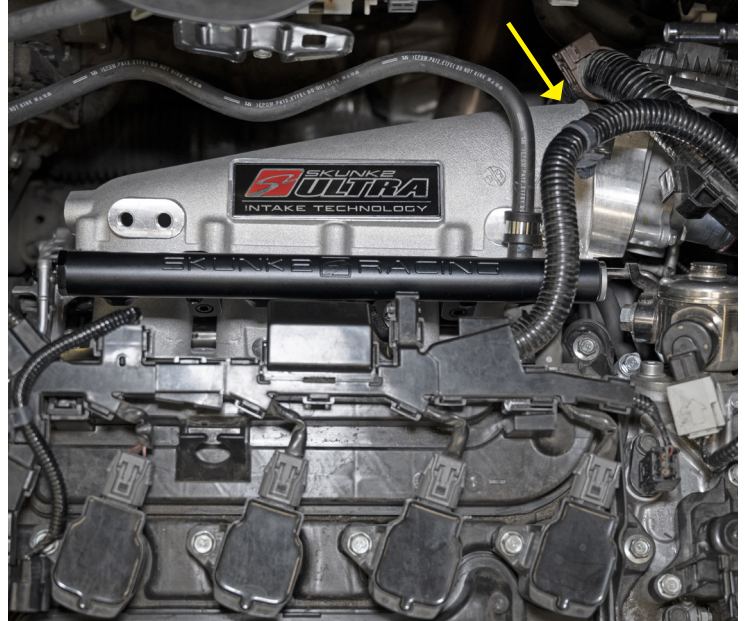
Connect all vacuum lines and plug any unused vacuum ports. Reconnect coolant lines.

#### STEP 5 THROTTLE BODY

Install the throttle body - Replace gasket as needed. Connect coolant lines to the throttle body.

#### STEP 6 INTAKE TUBE

Connect the intake tubing/pipe to the throttle body. Double check all fittings, hoses, and connections.



Note: Bracket Holding Harness Is Now Removed, Leave as Shown in Picture  
SKUNK 2 FUEL RAIL SOLD SEPARATE P/N: 350-05-8000

## PRODUCT DISCLAIMER

A vehicle modified with Skunk2 Performance or competition products may not meet the legal requirements for operation on public roads and/or highways. It is the purchaser's responsibility to check and comply with all local, state, and federal laws before installing and operating vehicle. Installation and use of these performance products may also affect or void manufacturer warranty and/or insurance policy. Some products may not be legal for use on pollution-controlled vehicles operating on public highways.

## WARRANTY POLICY

» Skunk2 warrants all products to be free from defects in materials and workmanship for normal use and service, regardless of mileage, for a period of time not to exceed ONE YEAR from original date of retail purchase by the original owner (Warranty is non-transferable, no exceptions). Parts returned must be determined by Skunk2 to be defective prior to any warranty credit or replacement is issued. Skunk2 obligation under warranty shall be limited to the repairing or replacing, at its option, any part proven defective. The customer must prepay transportation charges (If blatant defect, typically we cover shipping via UPS Call Tag). Final determination of the suitability of the products for the use contemplated by the buyer is the sole responsibility of the buyer.

» Skunk2 shall not be liable for any special, direct, indirect, incidental, or consequential damages, that might be claimed as a result of the failure of any part, including claims for delay, loss of profits, or labor. Skunk2 shall not be liable for any damage or injury to persons or property resulting from improper installation or misuse of any part subject to this warranty. There are no other warranties expressed or implied extending beyond those set forth above.

» All warranty claims should be submitted to the customer service department. If necessary, the customer service department will issue an RMA number so claim can be sent in to skunk2 for further review. No warranty claim return shipments will be accepted without a valid RMA number. The issuance of an RMA number does not imply in any way that a warranty claim will be accepted.

» It is the responsibility of the Customer to arrange for return shipping of any denied warranty claims. Any products from denied warranty claims will be surrendered and scrapped if return shipment is not arranged within 10 business days of warranty claim denial by the Customer. Customer assumes all liabilities that may arise from customer claims resulting from products being disposed.

## RETURN POLICY

See website for Return Policy [www.SKUNK2.com/policies-disclaimers](http://www.SKUNK2.com/policies-disclaimers)

2050 5th Street, Norco, California 92860, U.S.A. | Phone: 951.808.9888 | Email: [support@skunk2.com](mailto:support@skunk2.com)