

advanced FLOW engineering

Dynamic Air Scoop (D.A.S.)

Instruction Manual P/N: 50-70119S

Make: TOYOTA Model: TACOMA Year: 2024-2025 Engine: L4-2.4L(t)
Only fits with Momentum GT Cold air intake systems 50-70119D and 50-70119R



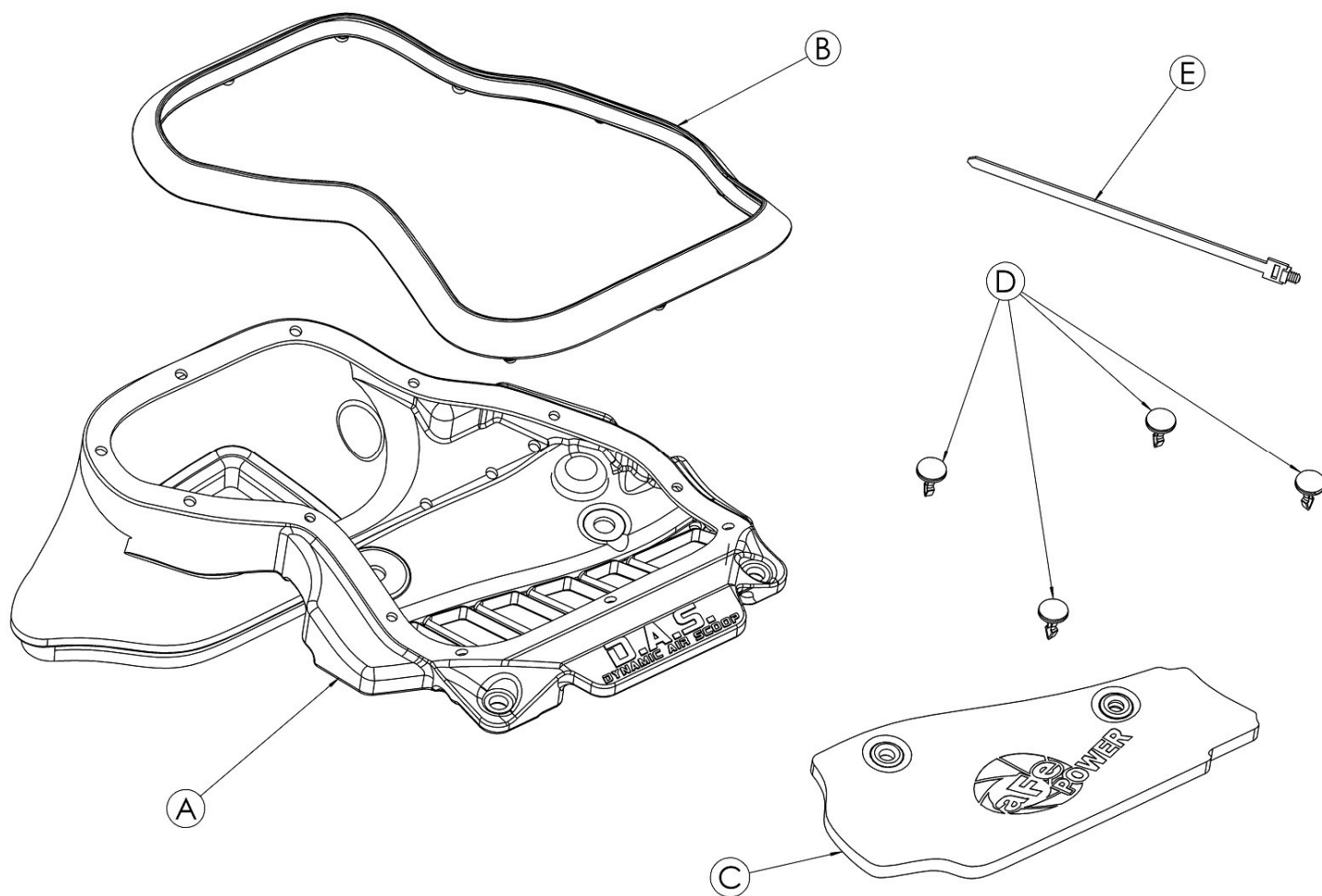
- Please read the entire instruction manual before proceeding.
- Ensure all components listed are present.
- If you are missing any of the components, call customer support at 951-493-7185.
- Ensure you have all necessary tools before proceeding.
- Do not attempt to work on your vehicle when the engine is hot.
- Retain factory parts for future use.

Label	Qty.	Description	Part Number
A	1	Air Scoop	05-5070119B3
B	1	Silicone Inlet Seal	05-01766
C	1	Foam Pre-Filter	05-01767
D	4	Push Clip: 6.5mm x 22mm	03-50773
E	1	Cable Tie With Push mount	03-50492

Installation will require the following tools: Pry tool or clip pliers.

Warranty Information available at <https://afepower.com/contact#warranty>

Emissions Disclaimer: This product is not currently CARB exempt and is not available for purchase in California or for use on any vehicle registered with the California Department of Motor Vehicles.



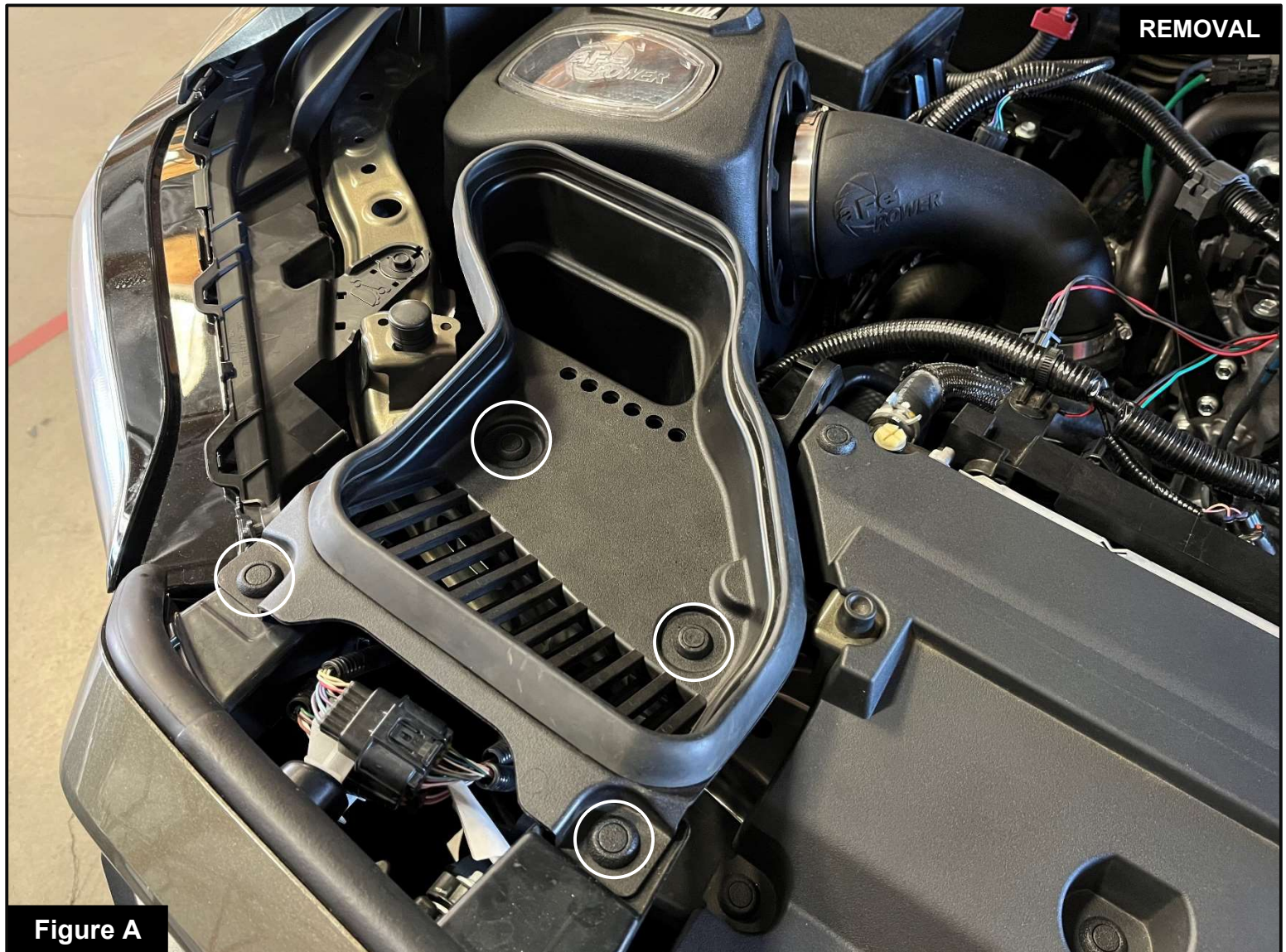


Figure A

Refer to Figure A for Step 1

Step 1: Carefully remove the (4) four push clips securing the factory scoop, by pressing on the center of them and then lifting them up. Remove the factory scoop from the Momentum GT housing and engine bay.

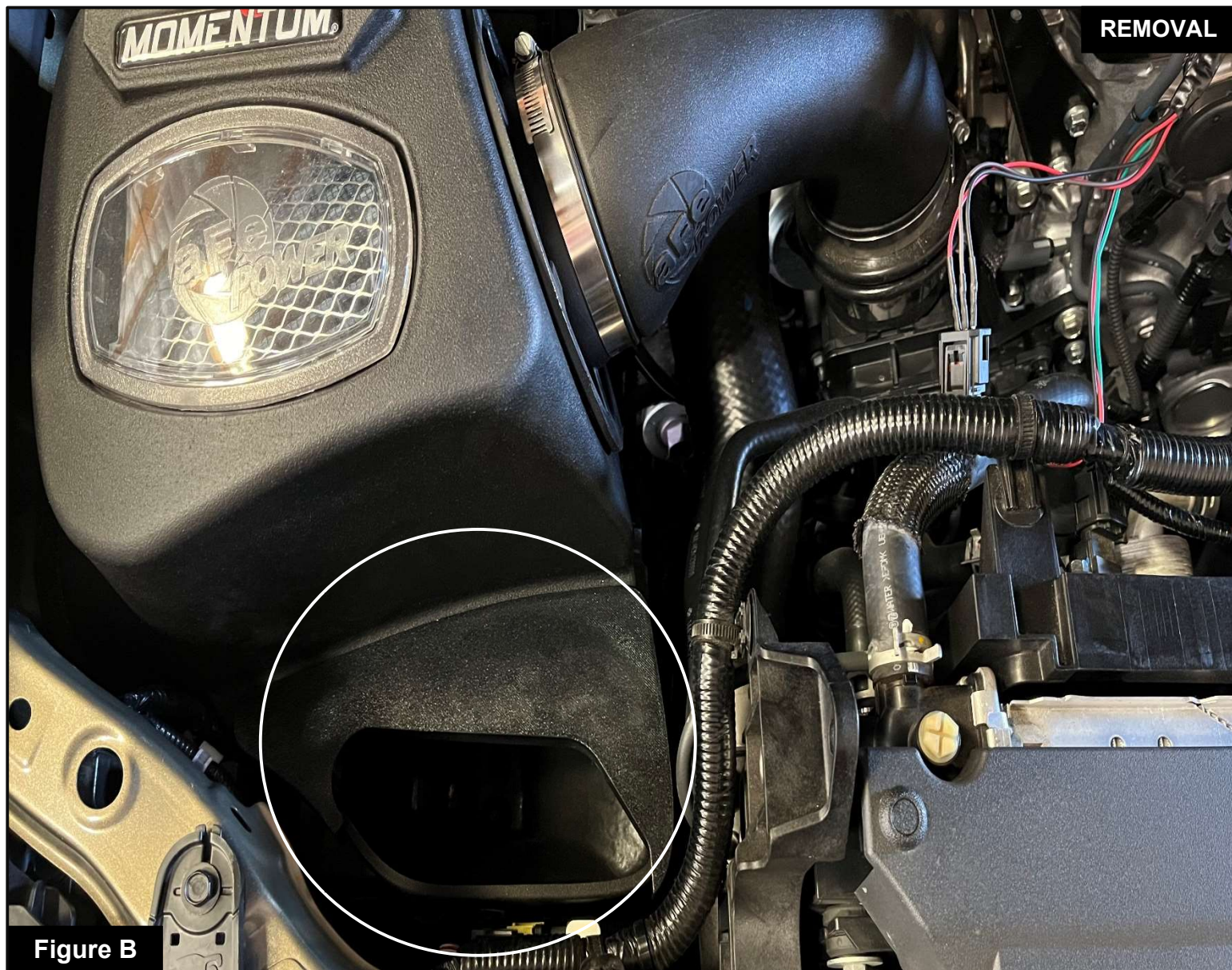


Figure B

Refer to Figure B for Step 2

Step 2: Remove the aFe POWER inlet silicone seal.

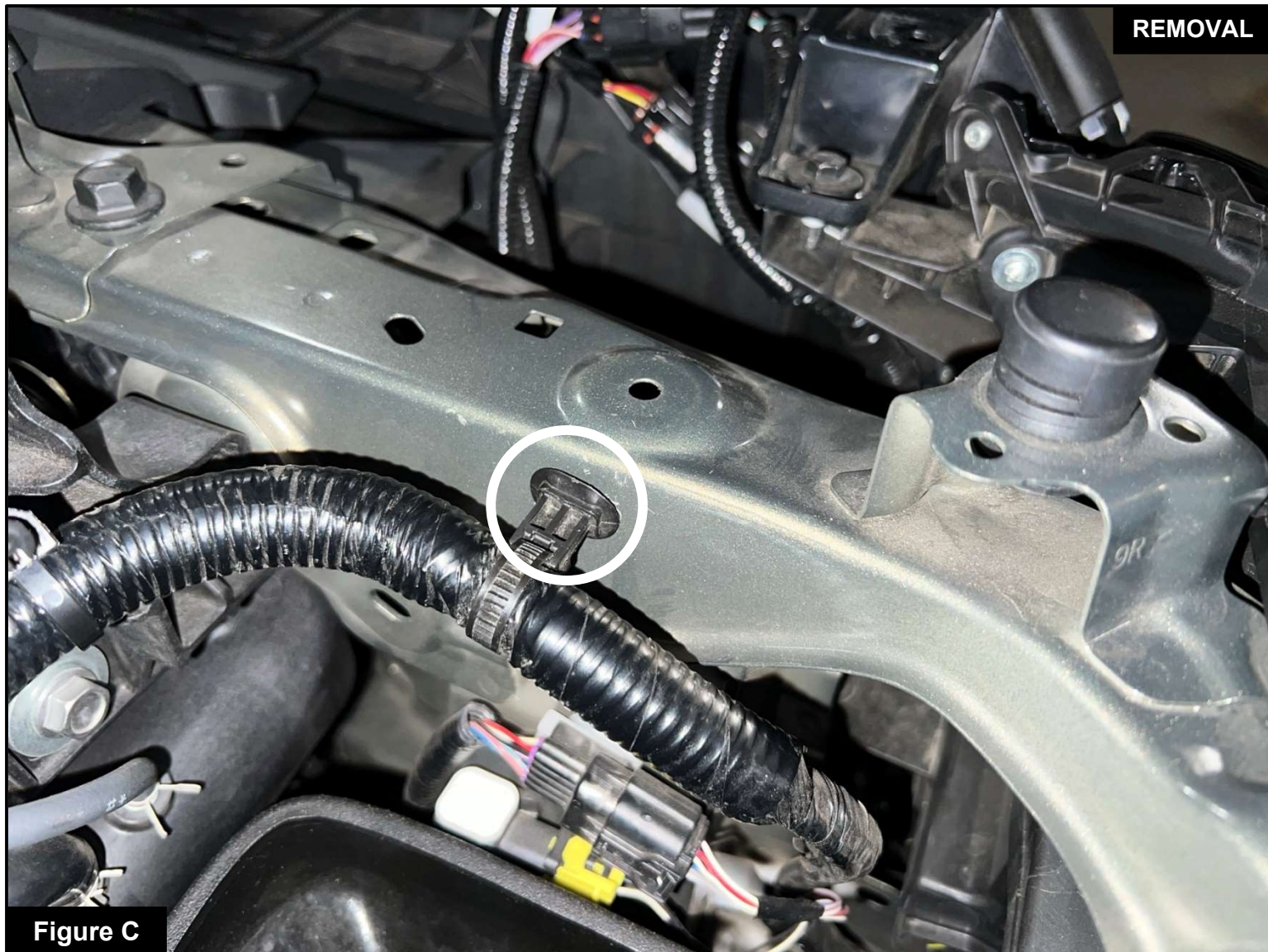


Figure C

Refer to Figure C for Step 3

Step 3: Carefully remove the harness clip from its mounting point to allow space for the (D.A.S) Dynamic Air Scoop.

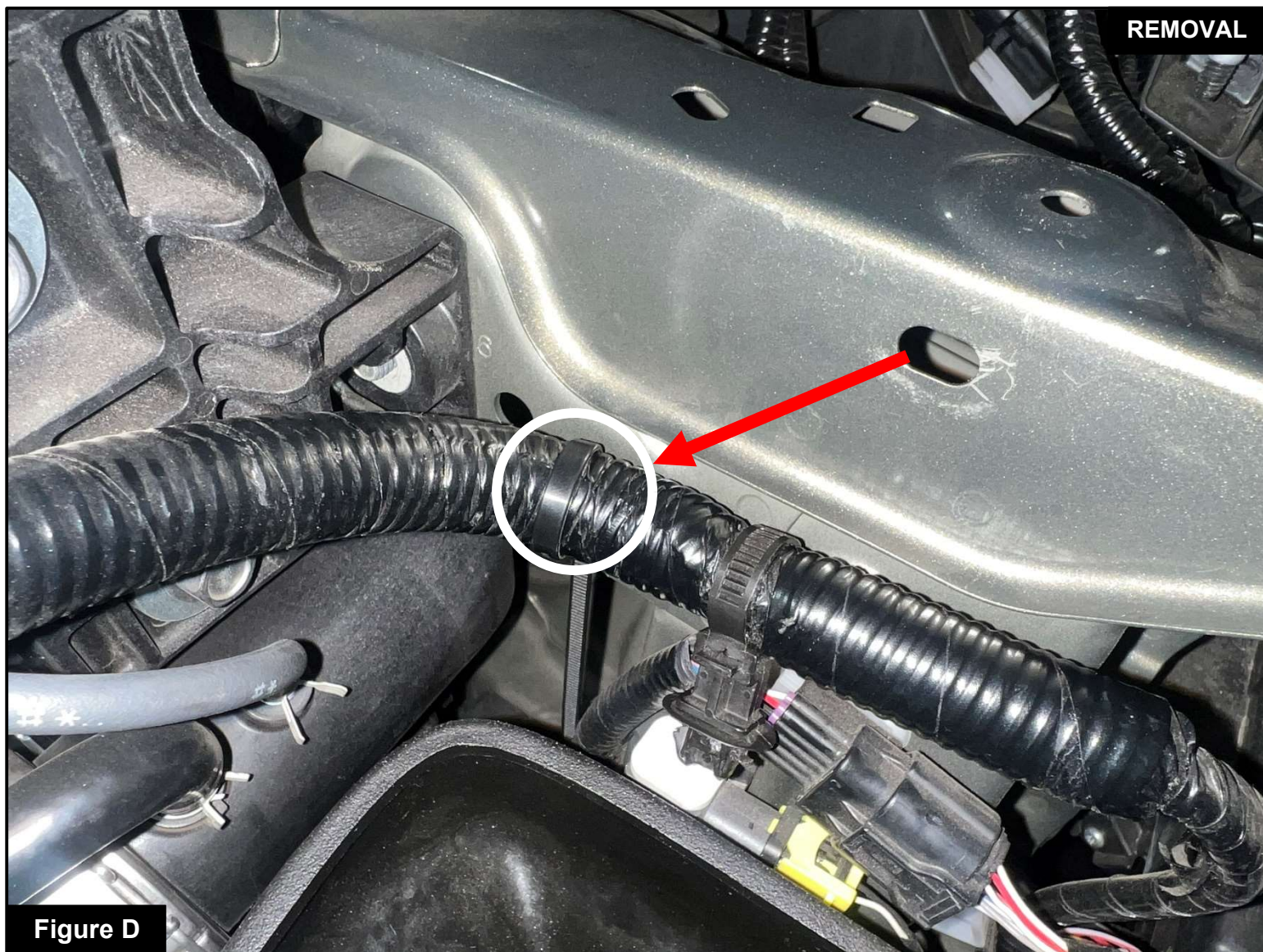


Figure D

Refer to Figure D for Step 4

Step 4: Use the provided cable tie with push mount to securely fasten the harness to the pre-existing hole positioned below the original mounting point.

Install



Figure E

Refer to Figure E for Step 5

Step 5: Install the provided aFe POWER silicone inlet seal onto the (D.A.S) Dynamic Air Scoop.

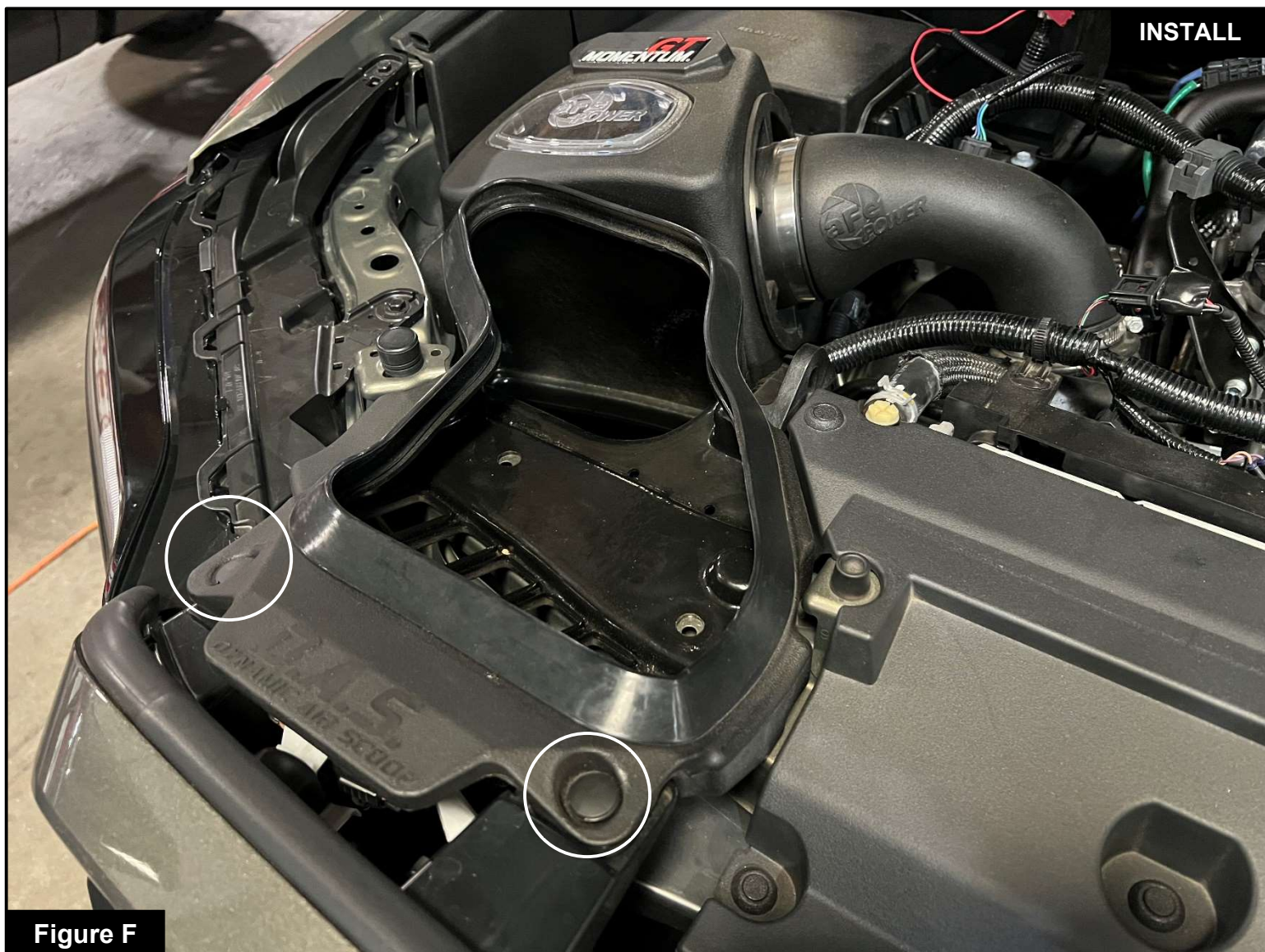


Figure F

Refer to Figure F for Steps 6 - 7

Step 6: Install the (D.A.S) Dynamic Air Scoop into the vehicle, ensuring it fits securely into the Momentum GT housing.

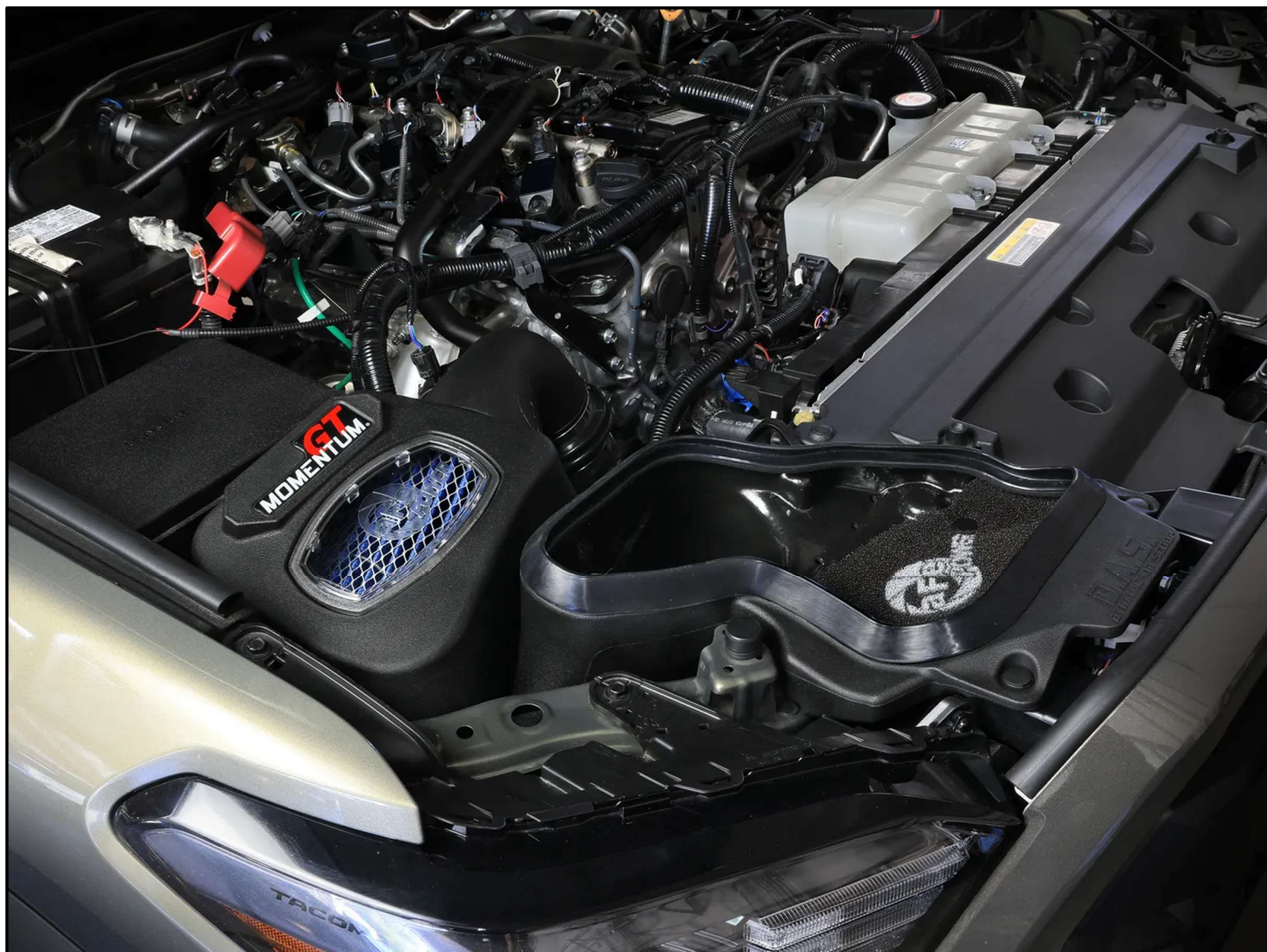
Step 7: Secure it with only two of the provided push clips as shown.



Figure G

Refer to Figure G for Step 8

Step 8: Install the aFe POWER foam pre-filter and secure it using the two remaining push clips.



Your installation is now complete. Thank you for choosing aFe POWER!



advanced FLOW engineering, Inc.

Corona, CA 92879

<https://afepower.com/contact>