

**GT**  
**MOMENTUM**

***advanced FLOW engineering***

**Cold Air Intake System**

**Instruction Manual** P/N: 50-70126D / 50-70126R

Make: Dodge    Model: Challenger    Year: 2011-2023    Engine: V8-5.7L (w/ Shaker Hood)



- Please read the entire instruction manual before proceeding.
- Ensure all components listed are present.
- If you are missing any of the components, call customer support at 951-493-7185.
- Ensure you have all necessary tools before proceeding.
- Do not attempt to work on your vehicle when the engine is hot.
- Retain factory parts for future use.

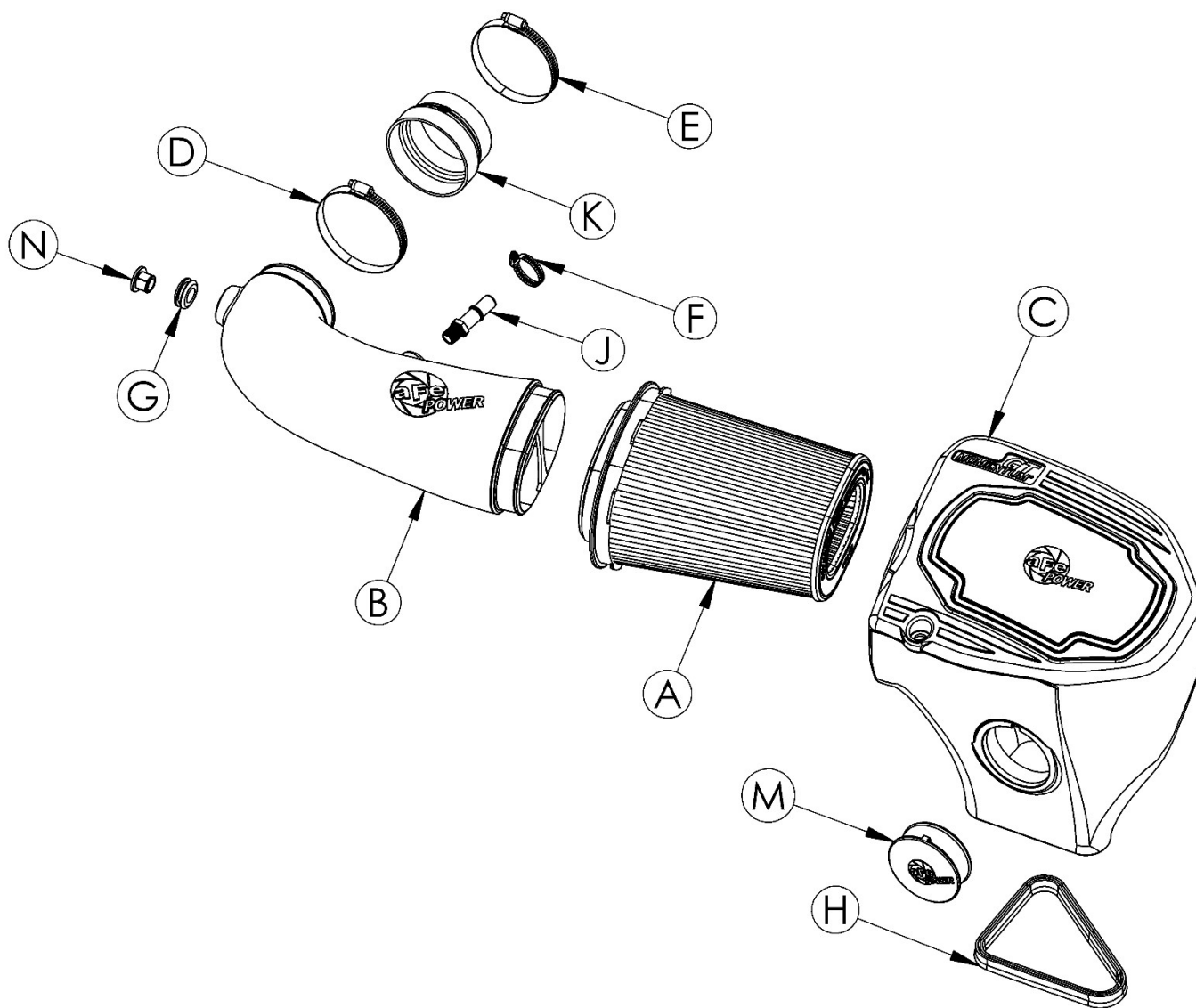
Label	Qty.	Description	Part Number
A	1	Air Filter (Pro 5R) For 50-70126R	24-91136
A	1	Air Filter (Pro DRY S) For 50-70126D	21-91136
B	1	Tube, Rotomold: 50-70126	05-5070126B1
C	1	Housing, Rotomold: 50-70125/70126	05-5070126B2
D	1	Clamp, 064 (3-9/16" - 4-1/2")	03-50006
E	1	Clamp, 056 (3-1/16" - 4")	03-50009
F	1	Mini Clamp, 016 (11/16" - 1-1/2")	03-50091
G	1	Grommet, Rubber	03-50167
H	1	Seal, Trim 20.5" Length	05-00072
J	1	Fitting, SAE 15.82 (5/8") to 3/8" NPT	05-01339
K	1	Coupler, Reducer: (3.90 x 3-1/2)ID x 2.35L	05-01358
M	1	Plug, Polyurethane	05-01361
N	1	Fitting, Air Temp Sensor	05-01454

#### Installation will require the following tools:

8mm and 10mm Nut Drivers or Ratchet and Sockets, 10mm Combination or Ratcheting Wrench, Adjustable wrench  
Flat Head Screwdriver, Pry Tool.

Warranty Information available at: <https://afepower.com/contact#warranty>

**Emissions Disclaimer:** This product is not currently CARB exempt and is not available for purchase in California or for use on any vehicle registered with the California Department of Motor Vehicles.






**Figure A**

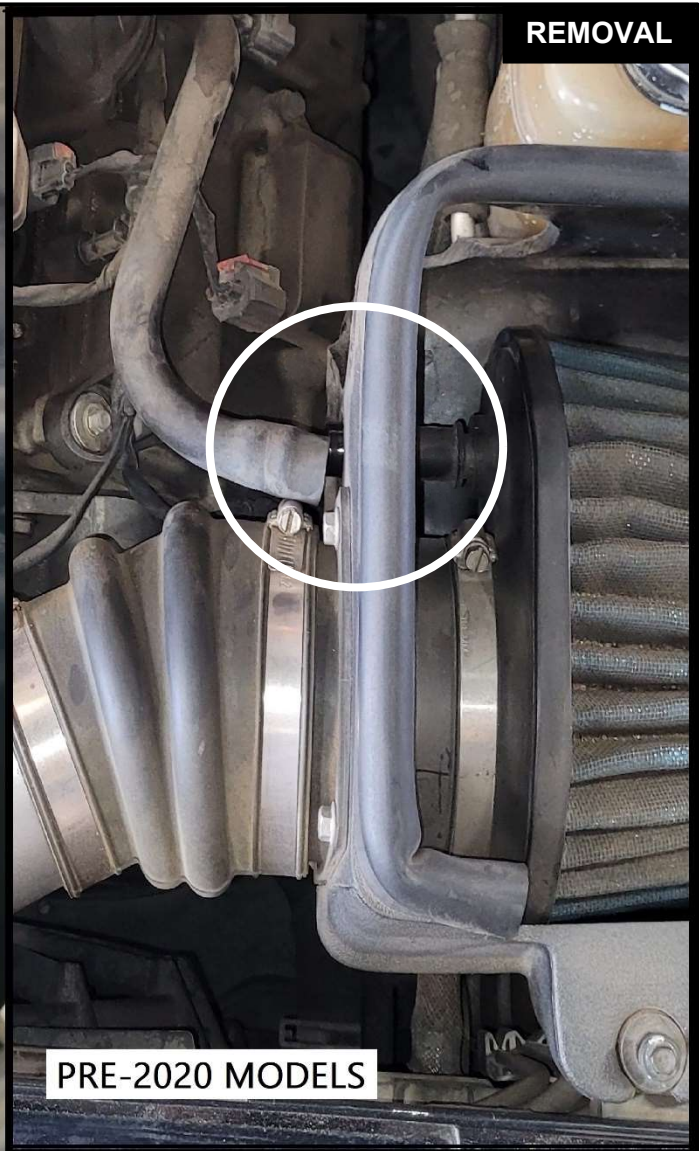
### **Refer to Figure A for Steps 1-3**

Step 1: Carefully unplug the (IAT) intake air temperature sensor connector from the factory intake tube.

Step 2: Remove the two (2) factory shaker hood tube retaining clips from the factory housing, using a pry tool or flathead screwdriver. Retaining clips will be used later in the installation.

Step 3: Use an 8mm driver or socket wrench to remove the front mounting screw securing the factory intake housing. Screw will be used later in the installation.





**Refer to Figure B for Step 4**

Step 4: Gently press and remove the quick-disconnect breather hose from the factory intake tube.

- Pre-2020 models remove the breather hose from factory housing and factory filter.

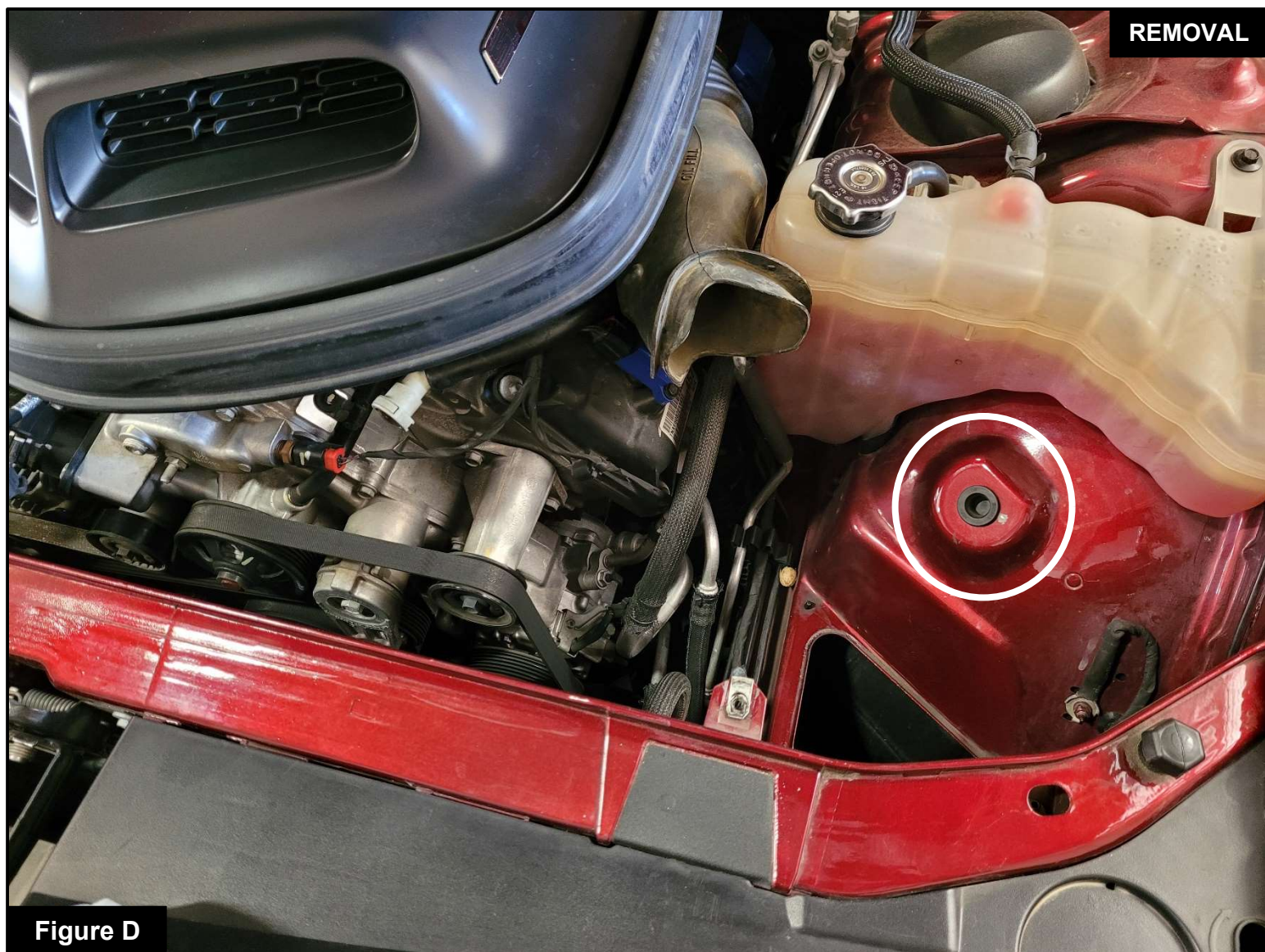


Figure C

## Refer to Figure C for Step 5

Step 5: Use an 8mm wrench or socket wrench to loosen the hose clamp securing the factory intake tube to the throttle body.





### **Refer to Figure D for Step 6**

Step 6: Carefully remove the factory intake housing and tube together. Make sure not to drop or lose the rubber grommet located at the bottom side of the housing.



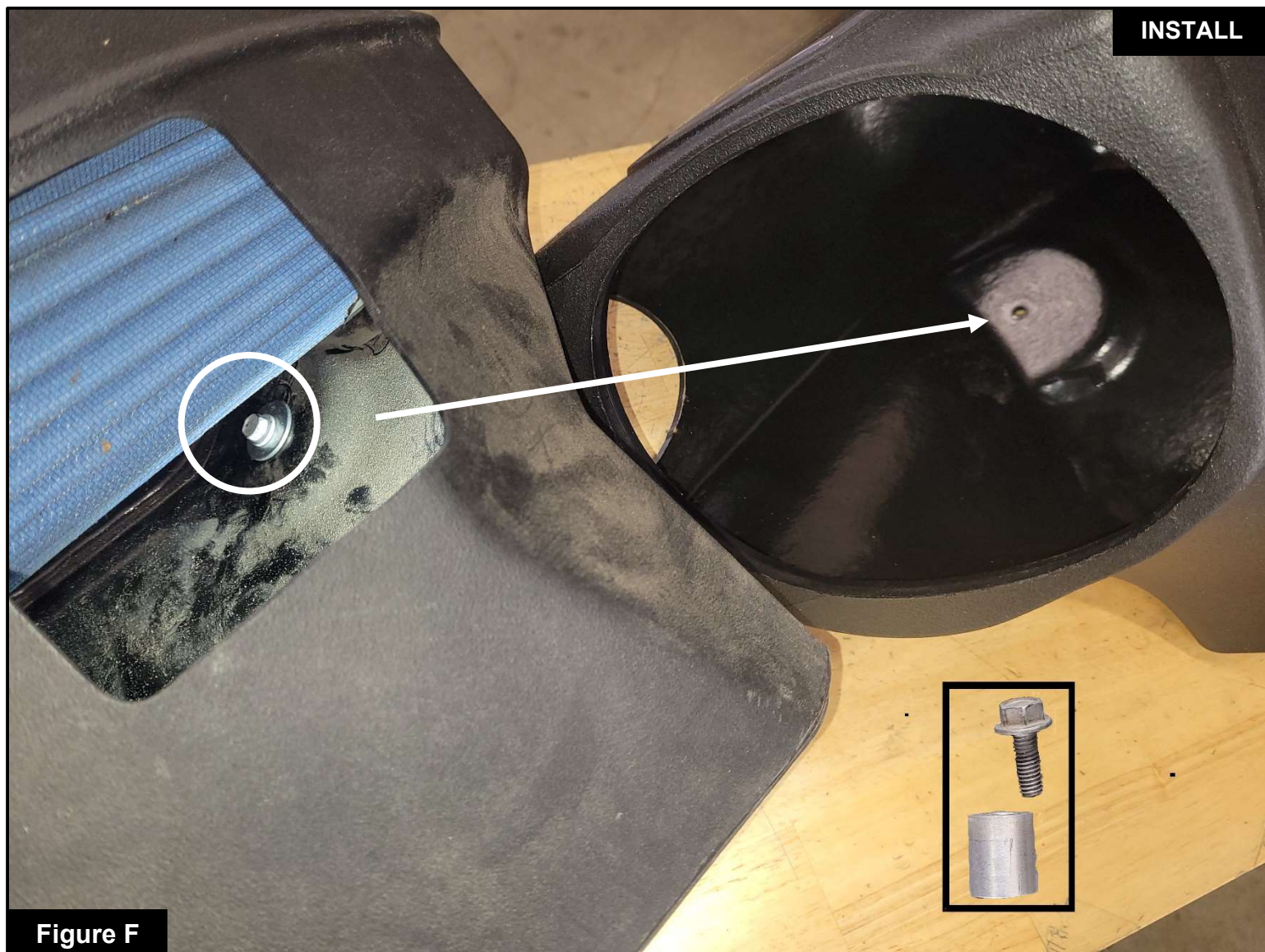


Figure F

**Refer to Figure F for Step 7**

Step 7: Use a 10mm wrench or socket wrench to remove the factory mount and screw from the factory housing and transfer them to the Momentum GT housing.





**Figure G**

### **Refer to Figure G for Step 8**

Step 8: Transfer the factory rubber grommet and steel mount from the factory housing to the Momentum GT housing.



**Figure H****Refer to Figure H for Step 9**

Step 9: Install the provided seal trim onto the bottom edge of the Momentum GT housing.




**Figure J**

## **Refer to Figure J for Step 10**

Step 10: Install the air filter into the Momentum GT housing by firmly pushing it into the housing until the filter tabs lock into place. Install the clamp onto the air filter, but do not tighten at this time.




**Figure K**

## **Refer to Figure K for Step 11**

Step 11: Install aFe POWER plug onto the Momentum GT housing. Leave the housing inlet open to get more air or close it off with the aFe POWER plug to block off the hot engine air.

- If you have purchased the headlight D.A.S. (50-70009S or 54-72203-SR) for this intake system, install it into the Momentum GT housing. You may need to remove the headlight cap behind the vehicle's driver-side headlight, which may be secured with Torx T-10 security screws. Remove the screws to twist and remove the cap before installing the D.A.S. into the housing.



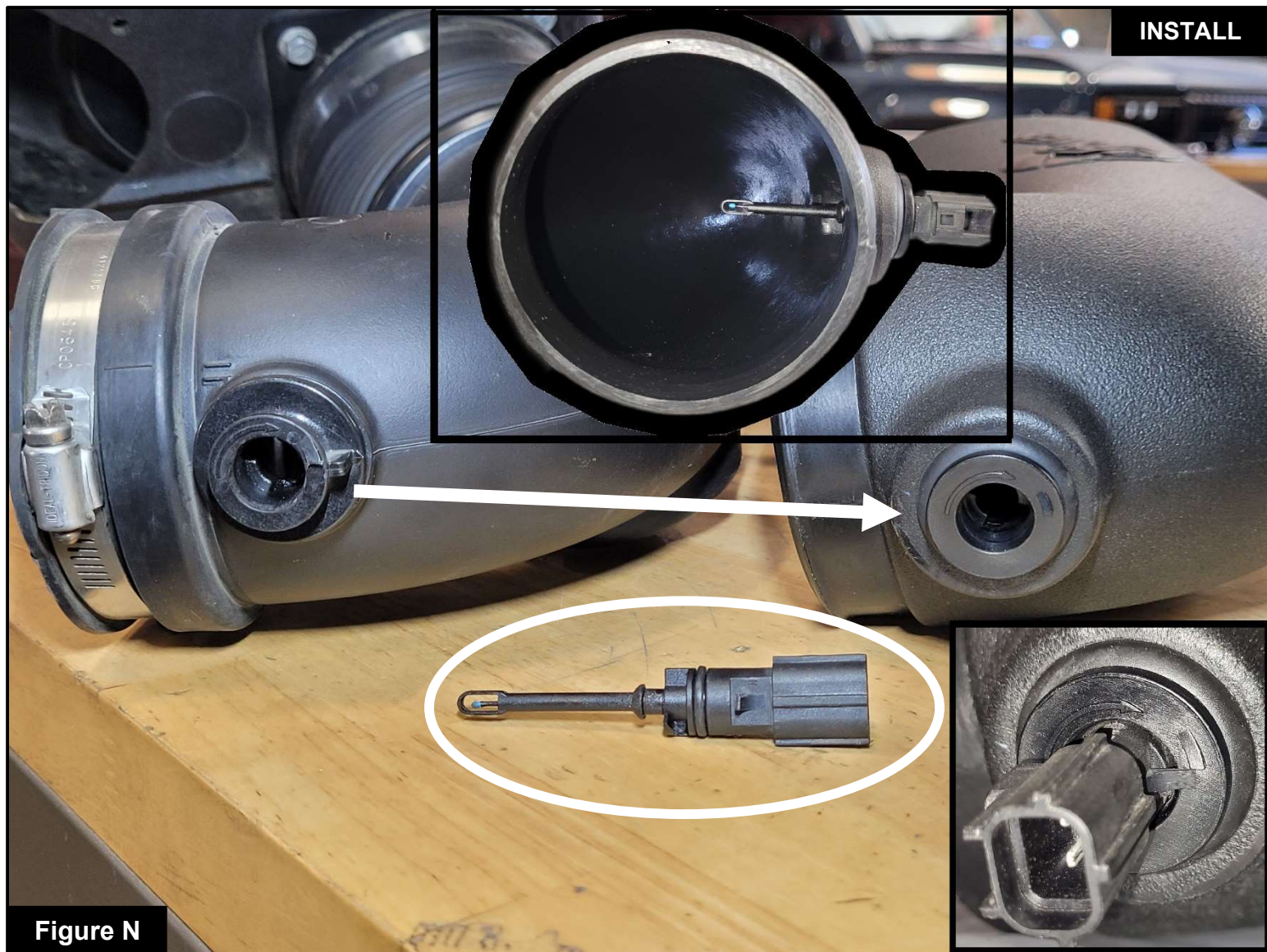

**Figure M**

### **Refer to Figure M for Steps 12-13**

Step 12: Use an adjustable wrench to install the provided aluminum SAE 3/8" NPT fitting on the Momentum GT intake tube. As you tighten, you should feel resistance as the threads make contact and the fitting begins to seal. Having a small gap between the hex portion of the fitting and the intake tube is ok, do not overtighten. Over-tightening can damage the threads.

Step 13: Install the provided rubber grommet and fitting for the (IAT) intake air temperature sensor onto the Momentum GT intake tube.





**Figure N**

### **Refer to Figure N for Step 14**

Step 14: Transfer the (IAT) intake air temperature sensor from the factory intake tube to the Momentum GT intake tube. Twist to lock in place. Ensure that the (IAT) intake air temperature sensor is oriented correctly for optimal readings and secure fit.



**Figure P****Refer to Figure P for Step 15**

Step 15: Install the aFe POWER coupler onto the throttle body and use an 8mm wrench or socket wrench to tighten the #56 hose clamp to ensure a secure connection.



Figure Q

## **Refer to Figure Q for Step 16**

Step 16: Carefully install the Momentum GT housing assembly. If using the D.A.S. carefully align the headlight scoop and ensure everything fits correctly and that the housing mount fully sits into the locating hole in the vehicle body. Do not tighten anything at this time.

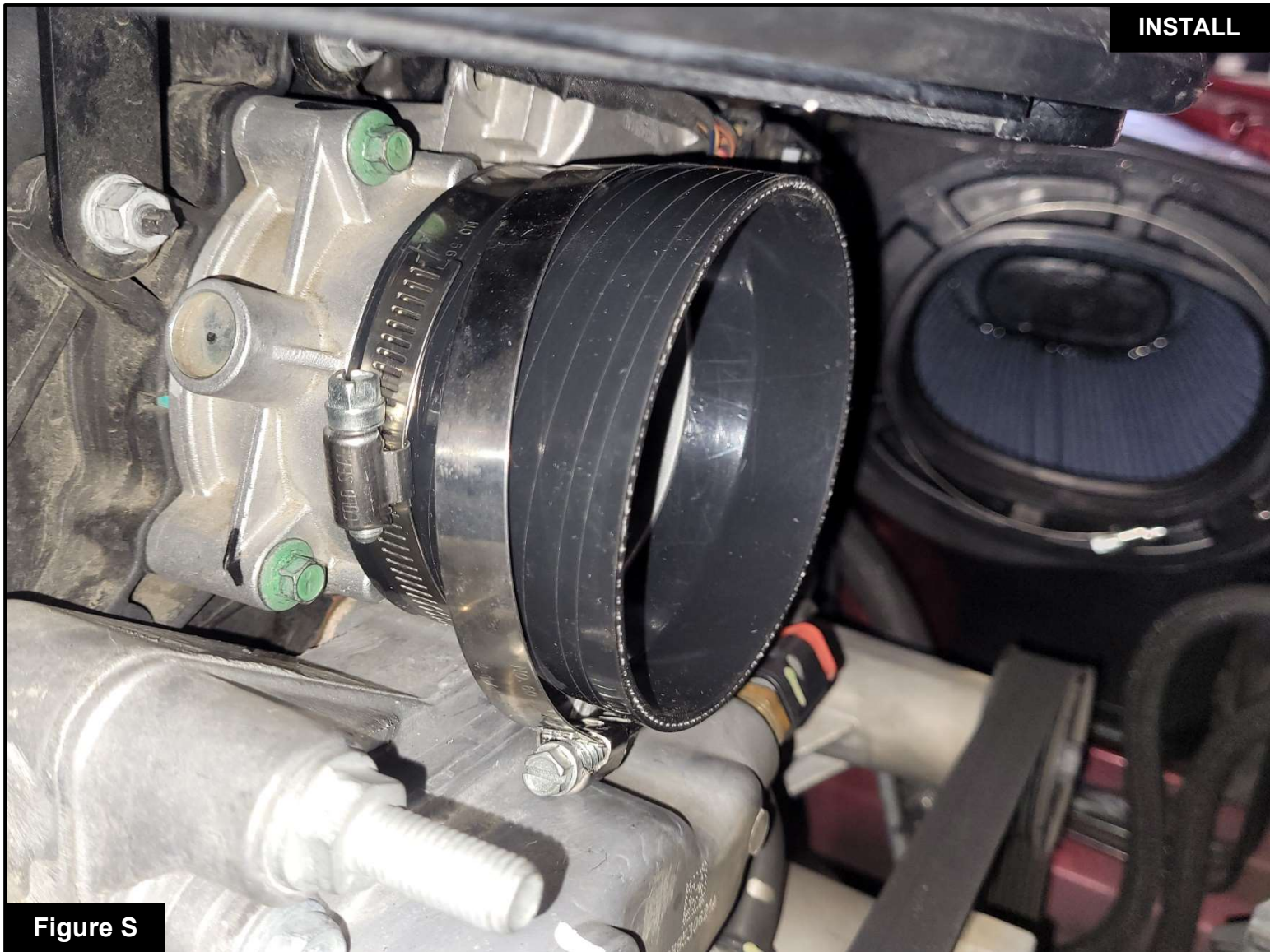




Figure R

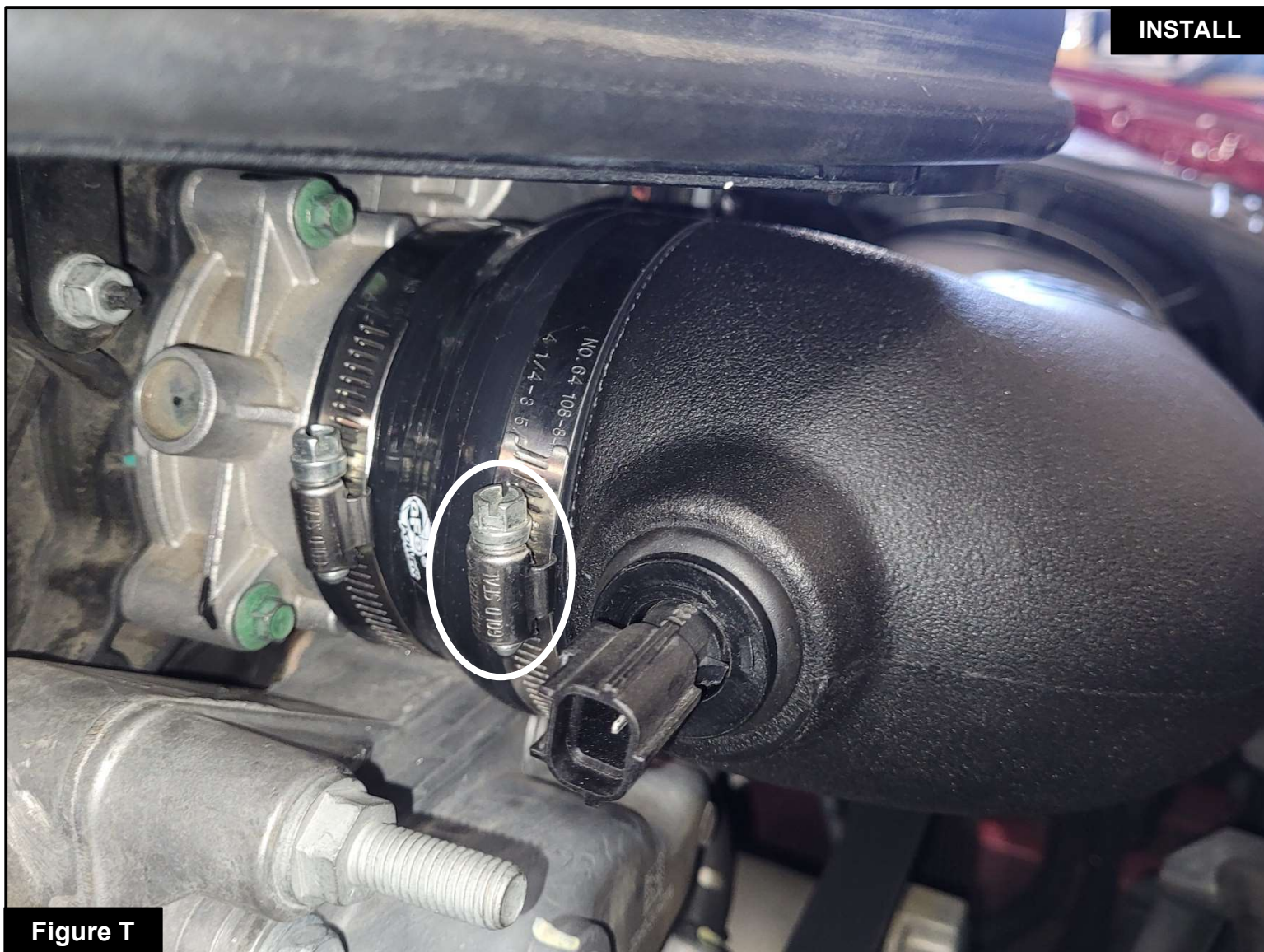
### **Refer to Figure R for Step 17**

Step 17: Insert the factory shaker hood tube into the Momentum GT housing and secure it with the two (2) factory retaining clips that were removed at Step 2.

**Figure S****Refer to Figure S for Step 18**

Step 18: Slip #64 hose clamp over the aFe POWER coupler. Do not tighten at this time.





**Figure T**

### **Refer to Figure T for Steps 19-20**

Step 19: Carefully install the Momentum GT intake tube between the coupler and the filter, ensuring proper alignment.

Step 20: Use an 8mm wrench or socket wrench to tighten the #64 hose clamp.





**Figure U**

### **Refer to Figure U for Steps 22-23**

Step 22: Use an 8mm driver or socket wrench to tighten the filter hose clamp.

Step 23: Use an 8mm driver or socket wrench to install the front factory mount screw that was removed in Step 3.





Figure V

## **Refer to Figure V for Steps 24-25**

Step 24: Connect the factory breather hose to the Momentum GT intake tube, ensuring it is properly secured. Make sure that the hose is not kinked.

- Pre-2020 models use the provided #16 mini hose clamp to secure factory breather hose to the Momentum GT intake tube. Make sure that the hose is not kinked.

Step 25: Carefully plug in the (IAT) intake air temperature sensor connector to the Momentum GT intake tube.





**Your installation is now complete. Thank you for choosing aFe POWER!**

**NOTE: Check to ensure that all screws, clamps, and connectors are secure after 100-200 miles.**





PAGE LEFT BLANK INTENTIONALLY



***advanced FLOW engineering, Inc.***

Corona, CA 92879

<https://afepower.com/contact>