

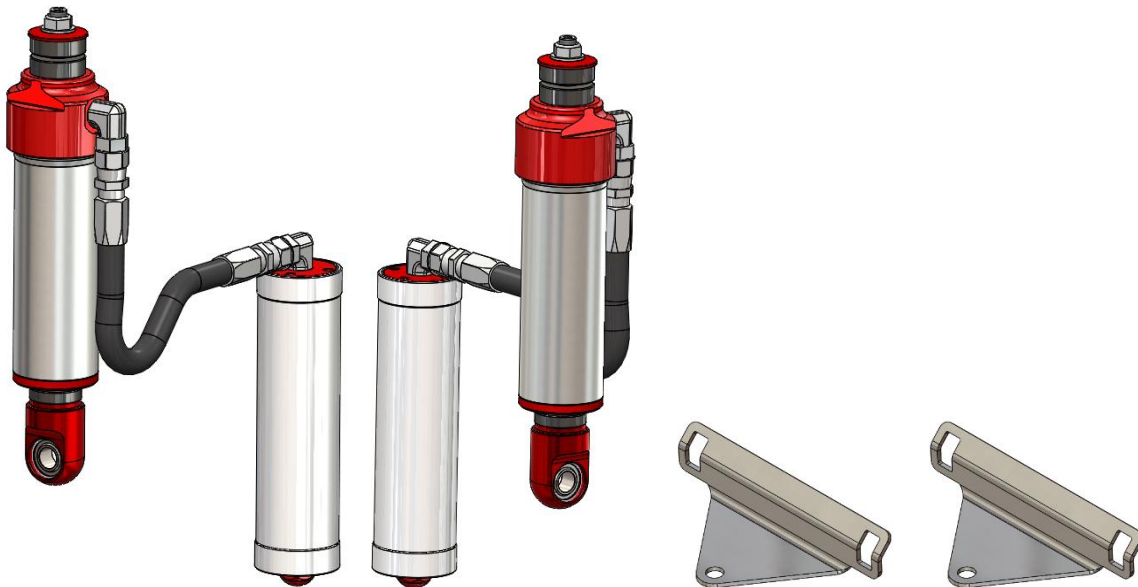


191 Granite St, Corona, CA 92879
Phone # 888-901-7693
afepower.com/swayaway

2001-2010 Chevy 2500 Front Shock Installation

Parts List:

- 2 Sway-A-Way Shocks - Remote Reservoir
- 2 Reservoir Brackets



Tool List

- 10mm socket
- 15mm socket
- 18mm wrench and socket
- 19mm socket
- 21mm socket
- Jack and jack stands
- Impact wrench (optional)
- Safety glasses

Removal and Installation Procedure for 2500 Front **(Shocks are already charged with Nitrogen)**

1. Park the vehicle on a level concrete surface where it is safe to work on your vehicle.
2. Lock and center the steering wheel.
3. Place blocks in front and behind the rear tires so as to keep the vehicle from moving forwards or backwards.



4. Jack the vehicle up under the front differential and place safely on jack stands under the front frame horns. Slightly raise the front end, only enough to take the weight off the shocks, and place another pair of jack stands under the front end on either side of the differential.
5. Use 19mm socket to remove lug nuts and wheels
6. Use 15mm socket to remove the nut connecting the swaybar to the endlink on both sides of the vehicle.
7. Use 10mm socket to remove the bolt holding the brake line to the upper control arm on both sides of the vehicle.



8. Use 18mm socket to remove ball joint in the upper control arm



9. Use 21mm socket to remove lower shock bolt.

10. Use 19mm socket to remove upper shock bolt and remove the old shock.

11. Install Sway-A-Way shock into original mounting holes using the supplied 19mm nuts. Install the reservoir bracket in between the red mount and the rubber bushing. Pay close attention to mounting orientation of the hose from the shock. Make sure the hose is facing as far forward into the vehicle as possible.



12. Install 2 hose clamps onto the reservoir and bracket to secure it.



13. Reinstall brake line bolts and sway bar endlinks bolts with their respective hardware.

14. Double check that every bolt that was removed has been retightened. Reinstall wheels and tighten lug nuts to factory spec.

15. Once the vehicle is lowered safely to the ground. Turn the front wheels fully left and fully right and visually check that there is clearance between the brake line and tire.

After you have finished installing your suspension kit, you must have the front end aligned.