

advanced FLOW engineering

Instruction Manual P/N: 51-74205 & 54-74205

Make: **Cadillac** Model: **ATS** Year: **2013-2016** Engine: **V6-3.6L**



- Please read the entire instruction manual before proceeding.
- Ensure all components listed are present.
- If you are missing any of the components, call customer support at 951-493-7100.
- Ensure you have all necessary tools before proceeding.
- Do not attempt to work on your vehicle when the engine is hot.

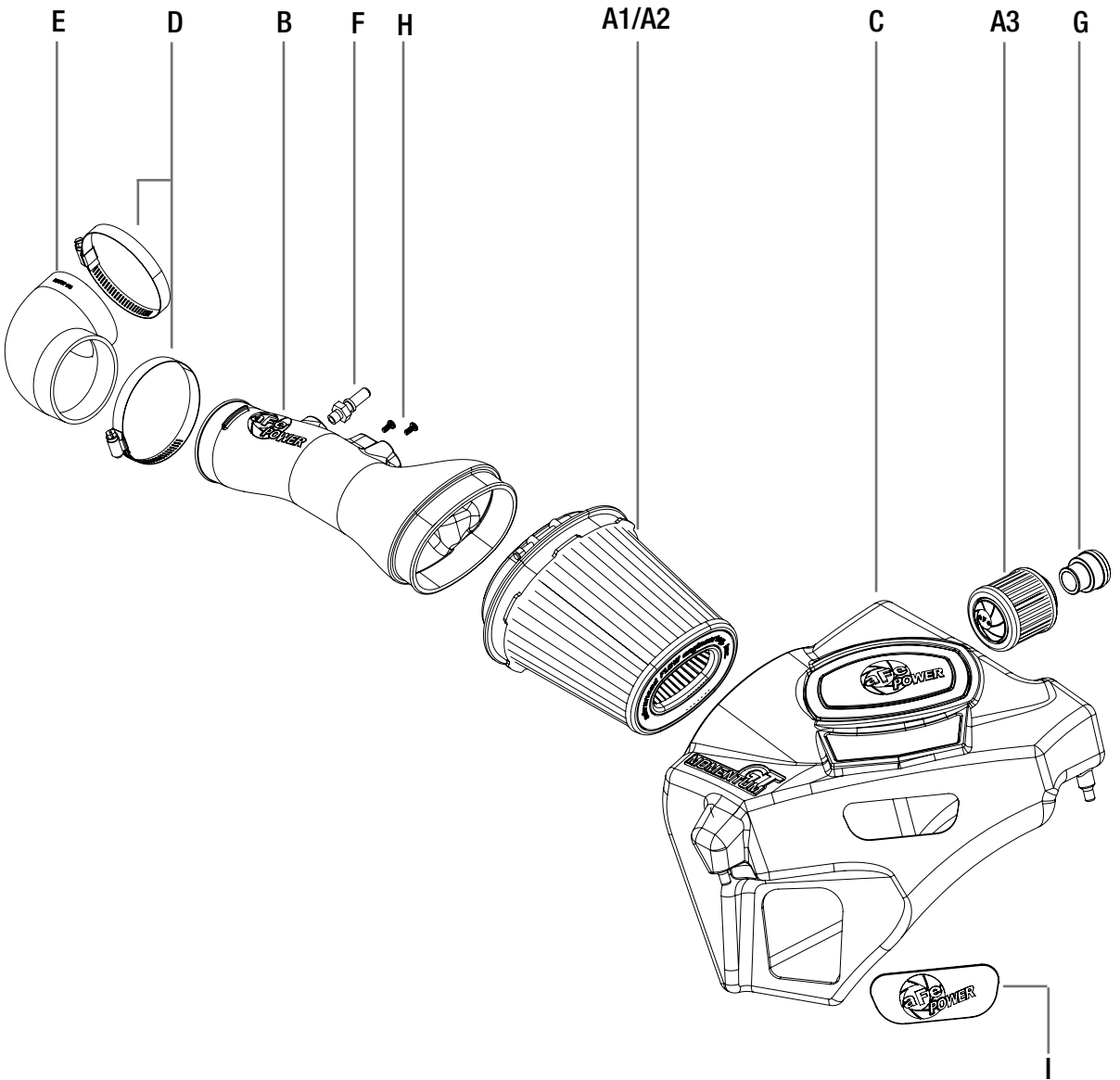
Retain factory parts for future use.

Label	Qty.	Description	Part Number
A1	1	Air Filter (Pro 5R)	24-91104
A2	1	Air Filter (Pro DRY S)	21-91104
A3	1	Air Filter Breather	18-01005
B	1	Tube	05-74205B1
C	1	Housing	05-74205B2
D	2	Clamp, #48	03-50007
E	1	Coupling, Silicone Elbow	05-01374
F	1	Fitting, Vent	03-50402
G	1	Fitting, Smog Pump	05-01096
H	2	Screw, M4	03-50491
I	1	Plug, Urethane	05-00937

Installation will require the following tools:

5/16" nut driver, 11mm deep socket & driver, T20 Torx & T30 Torx, flathead screwdriver and 17mm wrench.

Note: Legal in California for use on race vehicles only. The use of this device on vehicles used on public streets or highways is strictly prohibited in California and others states that have adopted California emission regulations.



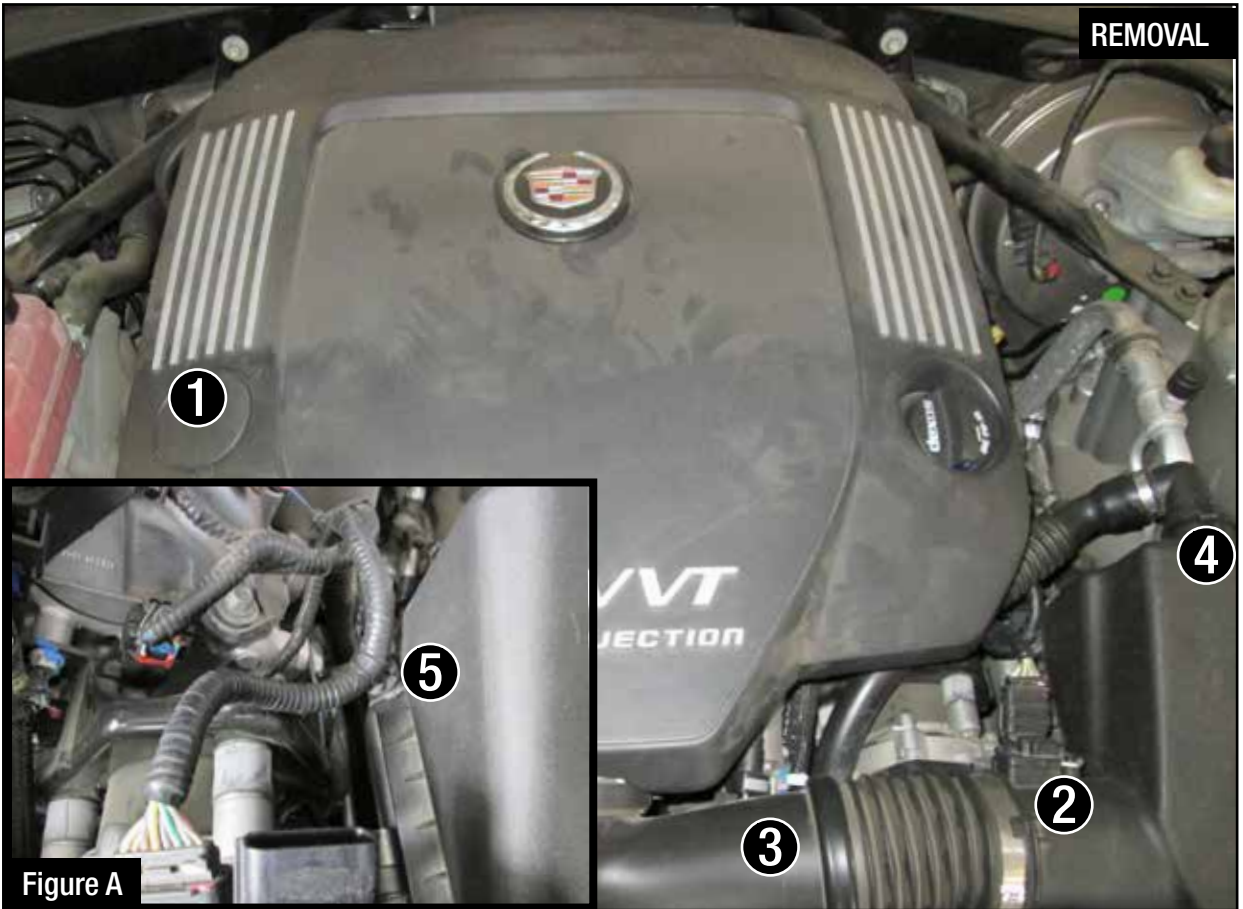


Figure A

Refer to Figure A for Steps 1-5

Step 1: Pop out the plug (1) from the engine cover using a flat-head screw driver. Use a T-30 Torx driver to remove the screw holding down the engine cover. Remove the oil cap and remove the engine cover. Reinstall the oil cap.

Step 2: Disconnect the mass air flow sensor (2) and breather hose (3).

Step 3: Use a 5/16" nut driver to loosen the OE clamps at the throttle body and the air box. Remove the OE intake tube.

Step 4: Disconnect the air pump hose (4) from the air box.

Step 5: Disengage the wire loom clip (5) from the air box.

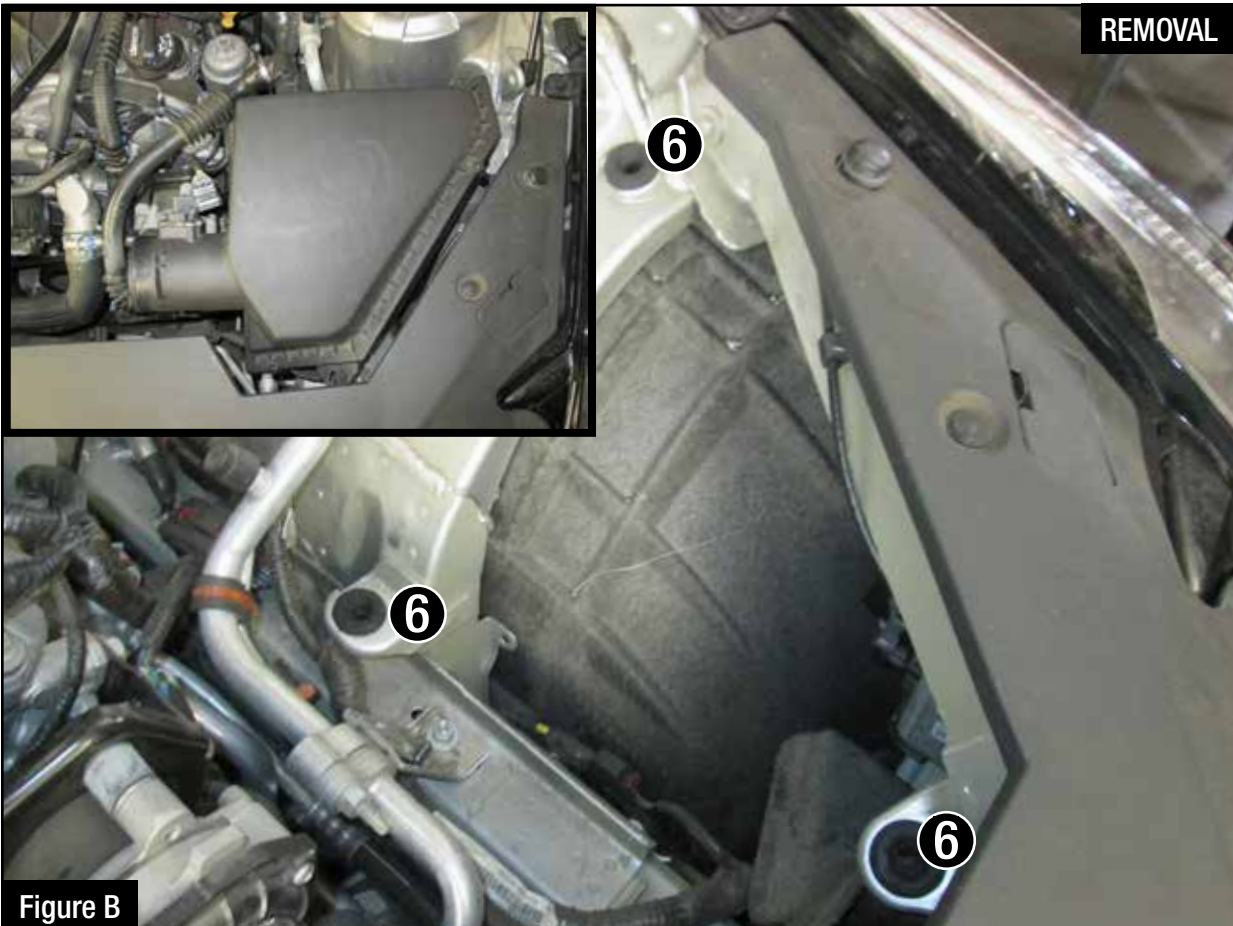


Figure B

Refer to Figure B for Step 6

Step 6: Remove the air box by pulling up to release air box from its mounting grommets (6). Make sure the mounting grommets (6) are still in the chassis mounting tabs. If they pulled out and are stuck in the lower half of the air box, remove them from the air box and insert them back on the chassis mounting tabs.



Figure C

Refer to Figure C for Step 7

Step 7: Using a Torx 20 driver, remove the mass air flow sensor from the upper half of the air box and set it aside.



Refer to Figure D for Step 8

Step 8: Remove the plastic air inlet scoop from the lower half of the air box and set it aside.



Figure E

Refer to Figure E for Steps 9-10

Step 9: Install the breather filter (7) through the opening of the air filter.

Step 10: Push the supplied aluminum adaptor (8) into the breather filter flange.

Note: If vehicle does not have a smog pump hose connected to the airbox, do not install aluminum adaptor to the breather filter.



Refer to Figure F for Step 11

Step 11: Install the plastic air inlet scoop into the aFe air box.

**Figure G****Refer to Figure G for Steps 12-13**

Step 12: Slide the aFe filter and clamp into the aFe housing and push it in until it locks into place. Do not tighten clamp at this time.

Step 13: Install the housing assembly into the vehicle by pushing down air box pins into the rubber grommets. Make sure the pins are completely through the mounting grommets



Figure H

Refer to Figure H for Steps 14-15

Step 14: Install the supplied aluminum vent fitting (9) into the aFe intake tube using a 17mm wrench.

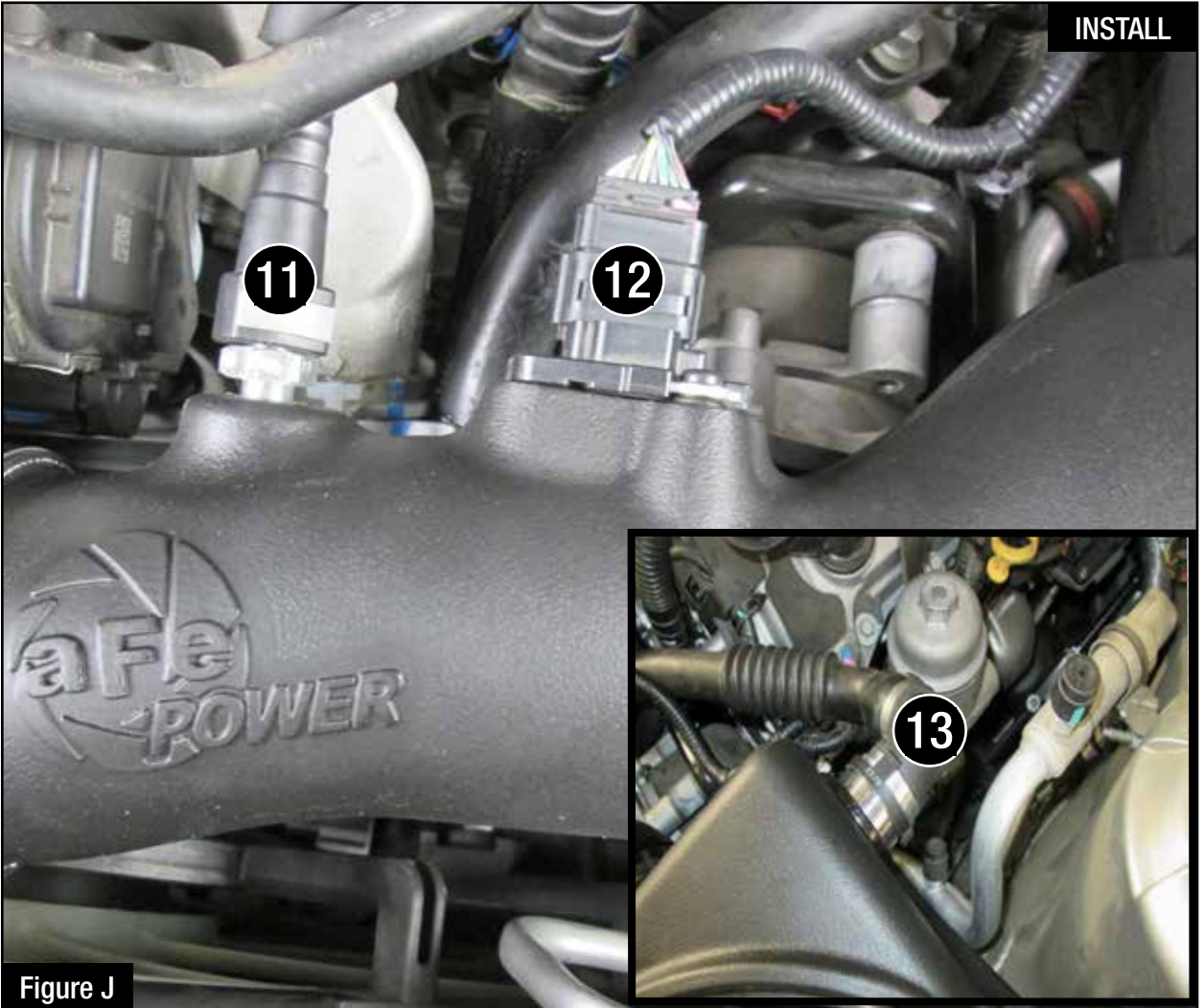
Step 15: Install the mass air flow sensor (10) in the aFe intake tube using the two supplied M4 screws using T20 torx driver.

**Figure I****Refer to Figure I for Steps 16-18**

Step 16: Install the aFe intake tube into the filter.

Step 17: Slide the two supplied hose clamps over the supplied silicone coupler and connect the coupler to the intake tube and throttle body. Tighten both clamps with a 5/16" nut driver.

Step 18: Snug the filter t-bolt clamp using a 11mm deep socket and driver. Do not over tighten.

**Figure J****Refer to Figure J for Steps 19-21**

Step 19: Connect the breather hose to the aluminum vent fitting (11) at the aFe intake tube by pushing in until it snaps together.

Step 20: Connect the mass air flow sensor. (12)

Step 21: Connect the air pump hose (13) to the aluminum adaptor in the air box.



Figure K

Refer to Figure K for Steps 22-23

Step 22: Install engine cover in reversal of Step 1.

Step 23: Use the provided plug (14) to close additional air inlet if you want to completely seal the air box.

Best performance gain is obtained by having more flow (no plug). Check all the components are tight and secure. Your installation is now complete.

NOTE: Check all bolts, clamps, and connectors after 200 miles.

Page left blank intentionally



Page left blank intentionally

Page left blank intentionally



Pro DRY S Air Filter



P/N: 21-91104

Pro 5R Air Filter



P/N: 24-91104

Air Breather Filter



P/N: 18-01005

Blue Aerosol Restore Kit



P/N: 90-50001

Blue Squeeze Restore Kit



P/N: 90-50501

Throttle Body Spacer



P/N: 46-34010

aFe LED Flashlight



P/N: 40-10131 (Small)
40-10150 (Large)

aFe T-Shirt



P/N: 40-30382 (M)
40-30383 (L)
40-30384 (XL)
40-30384 (2XL)

To purchase any of the items above, view airflow charts, dyno graphs, photos, and video; please go to aFepower.com.

Warranty

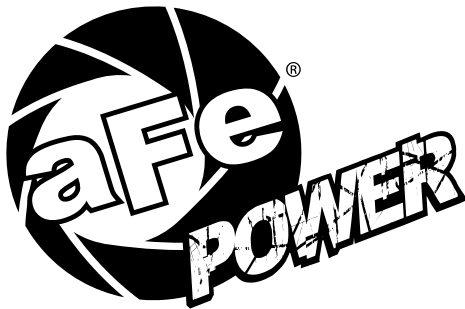
General Terms:

- aFe warrants their products to be free from manufacturer's defects due to workmanship and material.
- This warranty applies only to the original purchaser of the product and is non-transferrable.
- Proof of purchase of the aFe product is required for all warranty claims.
- Warranty is valid provided aFe instructions for installation and/or cleaning were properly followed.
- Proper maintenance with regular inspections of product is required to insure warranty coverage.
- Damage due to improper installation, abuse, unauthorized repair or alteration is not warranted.
- Incidental or consequential damages or cost, including installation and removal of part, incurred due to failure of aFe product is not covered under this warranty.
- All warranty is limited to the repair and/or replacement of the aFe part. To request Return Goods Authorization ("RGA"), email RGA@afepower.com or call (951)493-7100. Upon receipt of the RGA, you must return the product to the address provided in the RGA, freight prepaid and accompanied with a dated proof of purchase and the RGA. Upon receipt of the defective product and upon verification of proof of purchase, aFe will either repair or replace the defective product within a reasonable time, not to exceed thirty days.

Product Category	P/N Prefix	Warranty duration
Direct OE Replacement Filters	10, 11, 30, 31, 71, 73	Life of the vehicle
Racing Filters	18	1 year
Universal	21, 24, 72, TF	2 years
Air Intake Systems	50, 51, 54, 55, 75, TR, TA, TL	2 years
Exhaust Systems	49	2 years
Intercoolers & Intercooler Tubes	46-2	2 years
Intake Manifolds	46-1	2 years
Differential Cover	46-7	Life of the vehicle
Exhaust Manifolds	46	2 years
Throttle Body Spacers	46-3	2 years
Turbochargers	46-6	2 years*
Fluid Filters	44	90 days
Pre-Filters	28	2 years
Heavy Duty OE Replacement	70	2 years
PowerSports OE Replacement	81, 87	2 years
PowerSports Intake Systems	85	2 years

No other warranty expressed or implied applies nor is any person or advanced FLOW engineering authorized to assume any other warranty. Some States do not allow the exclusion or limitation of incidental or consequential damages or do not allow limitations on how long an implied warranty lasts, so the above limitations or exclusions may not apply to you. This warranty gives you specific legal rights, and you may also have other rights which vary from State to State.

*See turbocharger warranty for more info



advanced FLOW engineering, inc.
252 Granite Street Corona, CA 92879
TEL: 951.493.7100