



AIRCHARGER®

HIGH-FLOW INTAKE KITS

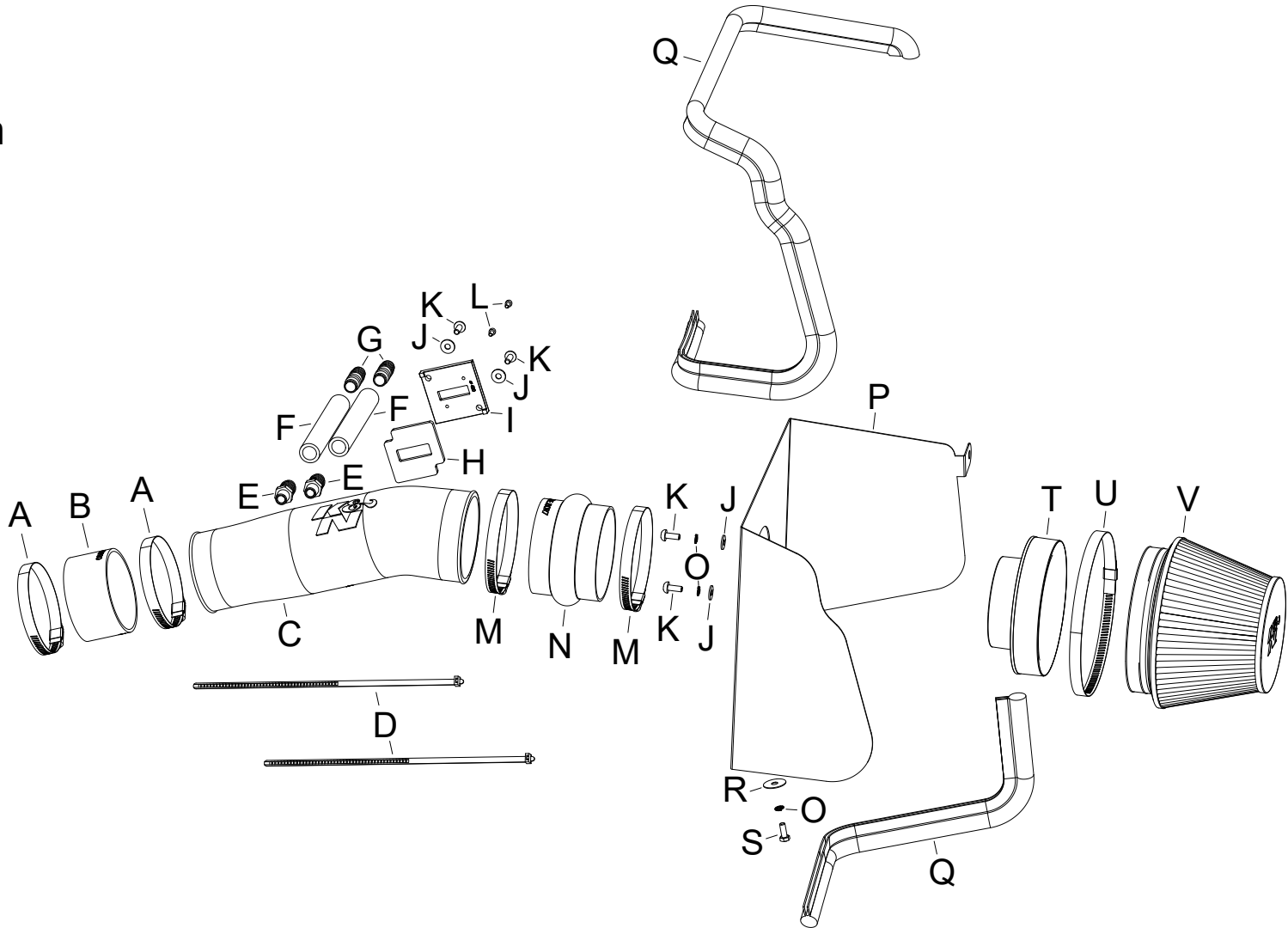
NOT LEGAL FOR SALE OR USE ON ANY POLLUTION CONTROLLED MOTOR VEHICLE IN CALIFORNIA OR STATES ADOPTING CALIFORNIA EMISSION PROCEDURES.
See knfilters.com for CARB status on each part for a specific vehicle

INSTALLATION INSTRUCTIONS

63-6019
NISSAN
2017-19 Titan
V8-5.6L

TOOLS NEEDED:

- ratchet
- extension
- 10mm socket
- 13mm socket
- flat blade screw driver
- phillips screw driver
- 3mm allen
- 4mm allen



PARTS LIST:

Description	Qty.	Part #	Description	Qty.	Part #	Description	Qty.	Part #
A HOSE CLAMP #56	2	08620	I ADAPTOR; 57-2556, NYLON 6/6	1	21515	Q EDGE TRIM (61")	1	102492
B HOSE; 3-1/2" ID X 2" L	1	08698	J WASHER; 6MM FLAT, SS	4	08269	R WASHER; 1"D X 1/4 HOLE	1	08160
C INTAKE TUBE	1	087343A	K BOLT; M6 X 1.00 X 16MM, SS	4	07730	S BOLT; 6MM-1.00 X 16MM, SS	1	07812
D CABLE TIES; 11" BLACK	2	21590	L BOLT; M4 - 0.7 8MM, A/H CAP	2	07733	T ADAPTOR; 57-3058 #454	1	27300
E VENT; STRT, 5/8 BARBED 1/4	2	08911-1	M HOSE CLAMP #64 STAINLESS	2	08645	U HOSE CLAMP; #104	1	08697
F HOSE; 5/8" ID X 6" L, BLACK	2	08653	N HOSE; 4" ID X 3" L HUMPS	1	08418	V FILTER CHARGER	1	RC-2960
G VENT; STRT, 5/8"HOSE - 5/8"	2	08048	O WASHER, M6 SPLIT LOCK ZINC	3	1-3025			
H GASKET; 57-2556, 3/16 PORON	1	09069	P HEAT SHIELD	1	073247			

If you need any assistance please call 1-800-858-3333 to speak with a representative in our Customer Service Center before returning the product.

NOTE: FAILURE TO FOLLOW INSTALLATION INSTRUCTIONS AND NOT USING THE PROVIDED HARDWARE MAY DAMAGE THE INTAKE TUBE, THROTTLE BODY AND ENGINE.

TO START:

1. Turn off the ignition and disconnect the negative battery cable.
NOTE: Disconnecting the negative battery cable erases pre-programmed electronic memories. Write down all memory settings before disconnecting the negative battery cable. Some radios will require an anti-theft code to be entered after the battery is reconnected. The anti-theft code is typically supplied with your owner's manual. In the event your vehicles anti-theft code cannot be recovered, contact an authorized dealership to obtain your vehicles anti-theft code.



2. Lift off the decorative engine cover.



3. Disconnect the mass air sensor electrical connection and unhook the wiring harness from the air filter housing.



4. Release the spring clamps and then disconnect the crank case vent lines from the factory intake tube. Unhook EVAP hose retaining clips from the factory intake tube.



5. Loosen the two hose clamps that secure the factory intake tube and then remove the tube from the vehicle.



6. Remove the bolt shown that secures air filter housing to the inner fender and then lift the air filter housing up to dislodge it from the mounting grommets and remove it from the vehicle.
NOTE: K&N Engineering, Inc., recommends that customers do not discard factory air intake.



7. Remove the two air box mounting studs.



8. From the underside, remove the plastic clip that retains the inner fender panel.



9. Remove the ECU mounting bracket bolt shown.



10. Install the provided filter adapter onto the K&N® heat shield and secure with the provided hardware.



11. Cut the provided edge trim into two sections of 18" and 41" each.



12. Install the edge trim onto the heat shield as shown.



13. Install the heat shield assembly onto the inner fender and secure with the provided hardware.
NOTE: One bolt will be installed from the bottom side into the heat shield using the hole exposed by removing the plastic clip in step #8.



14. Install the provided hump coupler (08418) onto the filter adapter and secure with the provided hardware.



15. Install the provided coupler hose (08698) onto the throttle body and secure with the provided hose clamp.



16. Install the provided gasket onto the K&N® mass air sensor adapter as shown.



17. Remove the two screws that secure the mass air sensor into the factory air filter housing and then remove the sensor from the housing.



18. Install the sensor into the K&N® sensor adapter and secure with the provided hardware.



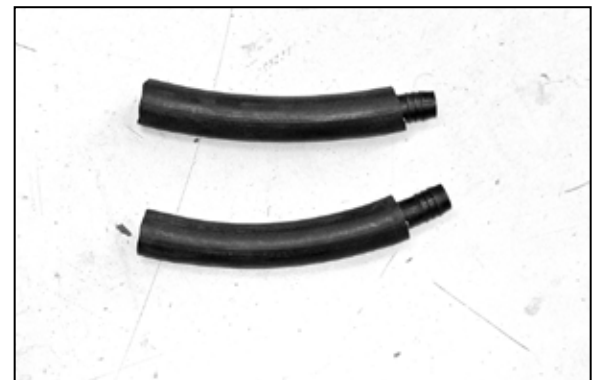
19. Install the sensor assembly into the K&N® intake tube and secure with the provided hardware.
NOTE: Be sure the sensor is installed with the opening towards the filter side if the intake tube.



20. Install the two vent fittings provided into the intake tube.
NOTE: Plastic NPT fittings are easy to cross thread. Install the vent fitting "hand" tight, then turn it two complete turns with a wrench.



21. Install the K&N® intake tube into the hump coupler and then into the coupler at the throttle body. Do not tighten the hose clamps at this time.



22. Install the two hose menders into the provided crank case vent hoses as shown.



23. Install the crank case vent hose assemblies onto the fittings in the intake tube and then connect the factory vent hoses. Secure the EVAP hoses with the provided tie wraps.



24. Connect the mass air sensor electrical connection.



25. Flex the heat shield back and install the K&N® air filter and secure with the provided hose clamp. Adjust the intake tube for best fit and then tighten the hose clamps.

NOTE: Drycharger® air filter wrap; part # 22-8049DK is available to purchase separately. To learn more about Drycharger® filter wraps or look up color availability please visit <http://www.knfilters.com>®.



26. Reinstall the decorative engine cover.



27. Reconnect the vehicle's negative battery cable. Double check to make sure everything is tight and properly positioned before starting the vehicle.

28. It will be necessary for all K&N® high flow intake systems to be checked periodically for realignment, clearance and tightening of all connections. Failure to follow the above instructions or proper maintenance may void warranty.

ROAD TESTING:

1. Start the engine with the transmission in neutral or park, and the parking brake engaged. Listen for air leaks or odd noises. For air leaks secure hoses and connections. For odd noises, find cause and repair before proceeding. This kit will function identically to the factory system except for being louder and much more responsive.

2. Test drive the vehicle. Listen for odd noises or rattles and fix as necessary.

3. If road test is fine, you can now enjoy the added power and performance from your kit.

4. K&N Engineering, Inc., requires cleaning the intake system's air filter element every 100,000 miles. When used in dusty or off-road environments, our filters will require cleaning more often. We recommend that you visually inspect your filter once every 25,000 miles to determine if the screen is still visible. When the screen is no longer visible some place on the filter element, it is time to clean it. To clean and re-oil, purchase our filter Recharger® service kit, part number 99-5050 or 99-5000 and follow the easy instructions.

NOT LEGAL FOR SALE OR USE ON ANY POLLUTION CONTROLLED MOTOR VEHICLE IN CALIFORNIA OR STATES ADOPTING CALIFORNIA EMISSION PROCEDURES.

See knfilters.com for CARB status on each part for a specific vehicle