



TYPHOON INTAKE SYSTEMS

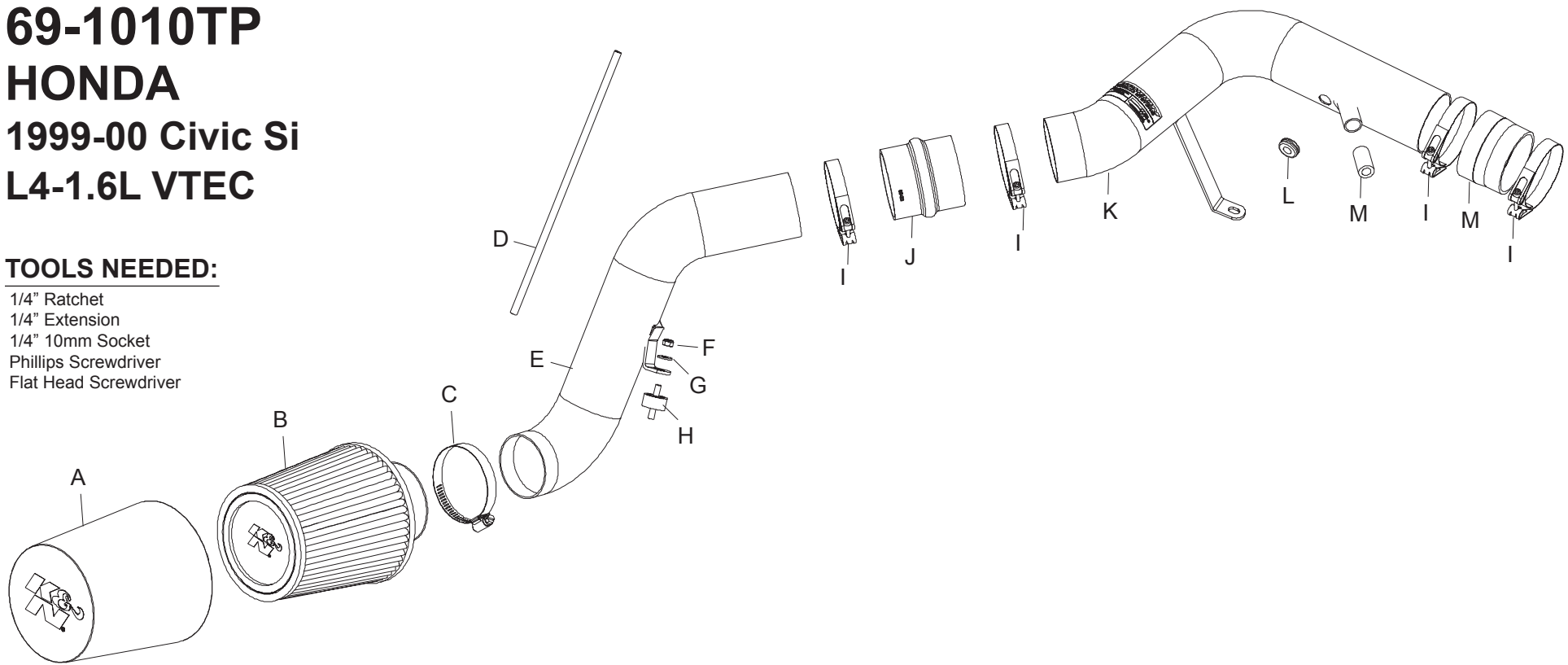
INTAKE SYSTEMS FOR VEHICLES LISTED ARE 50 STATE LEGAL. SEE KNFILTERS.COM FOR CARB STATUS ON EACH PART FOR A SPECIFIC VEHICLE.

INSTALLATION INSTRUCTIONS

69-1010TP
HONDA
1999-00 Civic Si
L4-1.6L VTEC

TOOLS NEEDED:

- 1/4" Ratchet
- 1/4" Extension
- 1/4" 10mm Socket
- Phillips Screwdriver
- Flat Head Screwdriver



PARTS LIST:

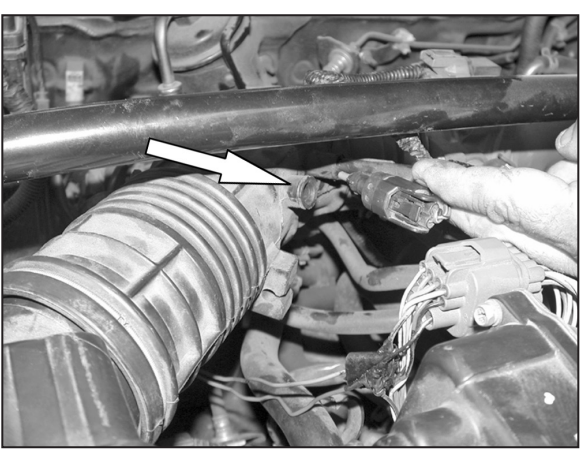
Description	Qty.	Part #	Description	Qty.	Part #	Description	Qty.	Part #
A DRYCHARGER; 5-1/2" T, BLUE	1	RX-4730DL	E TYPHOON COLD-AIR TUBE	1	087080	J HOSE; 2-3/4" ID, HUMP, BLACK	1	08439
B AIR FILTER	1	RU-4870	F NUT; 6MM NYLOCK, SS	1	07512	K TYPHOON INTAKE TUBE	1	087079TP
C HOSE CLAMP #44	5	08560	G WASHER; 6MM WAVE SS	1	08277	L GROMMET; 3/8" ID X 7/8 OD	1	08283
D EDGE TRIM; 1/16" GAP X 12" L	1	102466	H STUD; RUBBER MOUNT 6MM	1	07027	M HOSE; 10MM X 1-1/4" L, BLK	1	084048
						N HOSE; STEP, BLACK	1	084014

WARNING: The K&N® Drycharger® included with this kit must be installed on the K&N® air filter when used with this K&N® cold air intake system. The K&N® cold air intake system a performance product that can be used safely during mild weather conditions. During harsh and inclement weather conditions, you must convert your cold air intake system to a short ram configuration, or return your vehicle to the stock OEM airbox and intake tract configuration. Failure to follow these instructions can void your warranty.

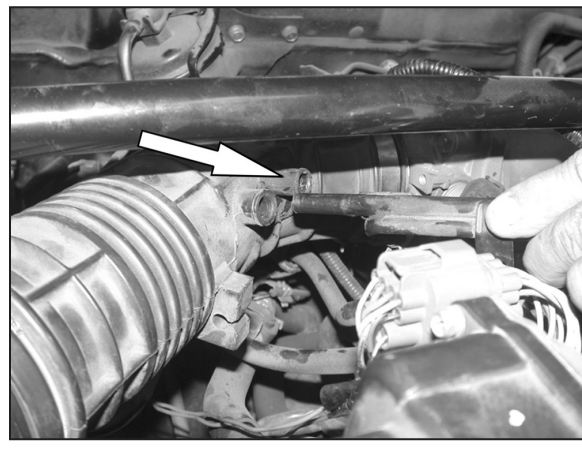
NOTE: FAILURE TO FOLLOW INSTALLATION INSTRUCTIONS AND NOT USING THE PROVIDED HARDWARE MAY DAMAGE THE INTAKE TUBE, THROTTLE BODY AND ENGINE.

TO START:

1. Turn off the ignition and disconnect the negative battery cable.
NOTE: Disconnecting the negative battery cable erases pre-programmed electronic memories. Write down all memory settings before disconnecting the negative battery cable. Some radios will require an anti-theft code to be entered after the battery is reconnected. The anti-theft code is typically supplied with your owner's manual. In the event your vehicles anti-theft code cannot be recovered, contact an authorized dealership to obtain your vehicles anti-theft code.



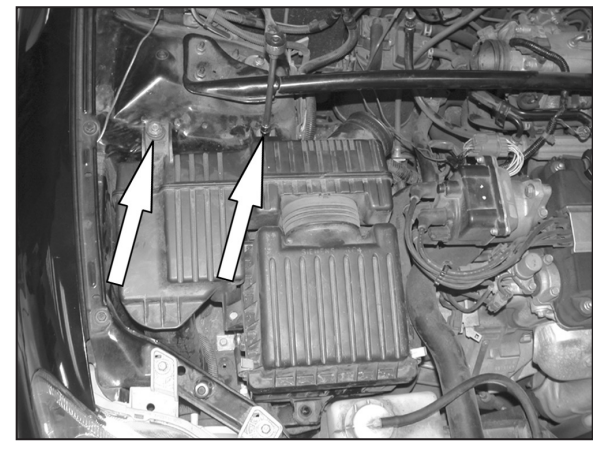
2. Remove the air temperature sensor from the stock intake tube as shown.



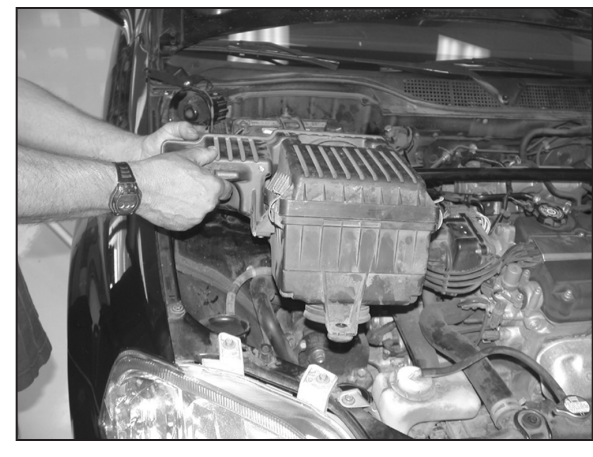
3. Remove the crank case vent hard line from the stock intake tube as shown.



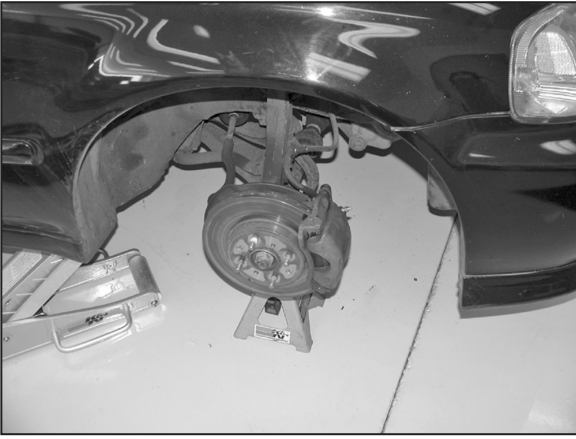
4. Loosen the hose clamp at the throttle body, then, remove the stock intake tube as shown.



5. Loosen and remove the two bolts that secure the air cleaner to the inner fender as shown.



6. Pull firmly upwards to release the air cleaner assembly from the lower grommet, then, remove the air cleaner assembly as shown.
NOTE: K&N Engineering, Inc., recommends that customers do not discard factory air intake.



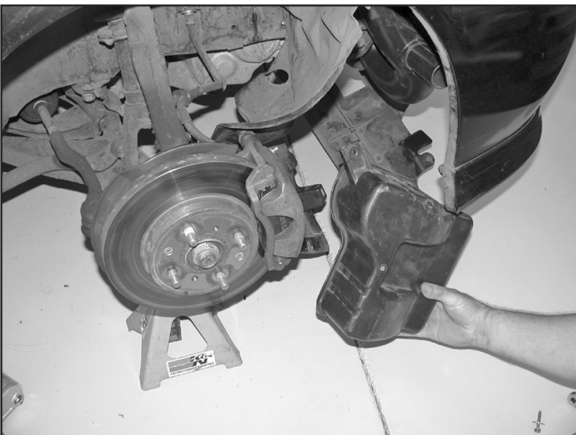
7. Raise the vehicle up and support it with jack stands, then, remove the driver side front tire as shown.



8. Remove the two bolts and one clip, then, lower the center splash guard down as shown.



9. Remove the three plastic clips and one screw, then, lower the inner fender valance down as shown.



10. Remove the three bolts that secure the resonator to the inner fender, then, remove the resonator as shown.



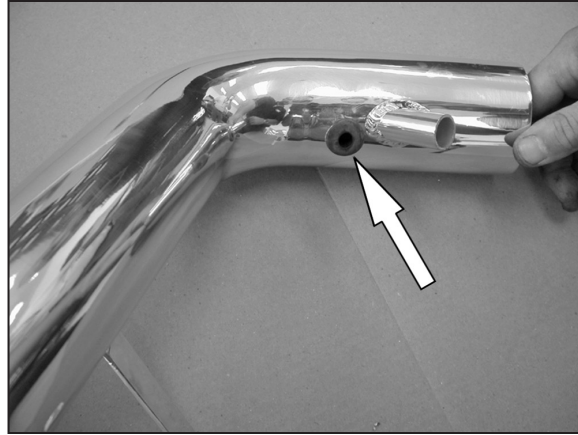
11. Remove the air inlet duct as shown.



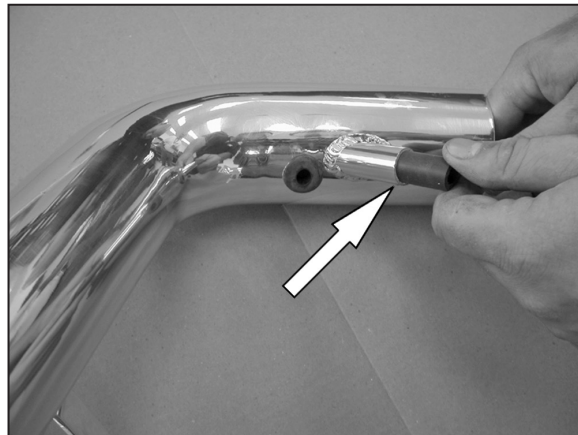
12. Install the silicone hose and hose clamps onto the throttle body and tighten as shown.



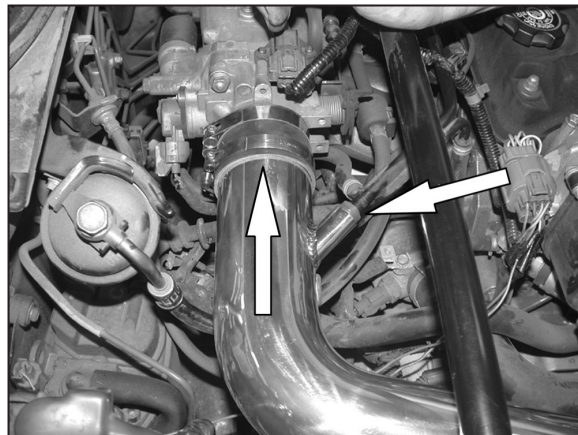
13. Remove the bolt that secures the wire harness bracket to the starter as shown.



14. Install the provided grommet into the hole on the K&N® short ram tube as shown.
NOTE: Before installing the grommet, inspect the inside of the tube for any debris, then clean the inside out with water and a towel. Inspect the tube one more time before proceeding to the next step.



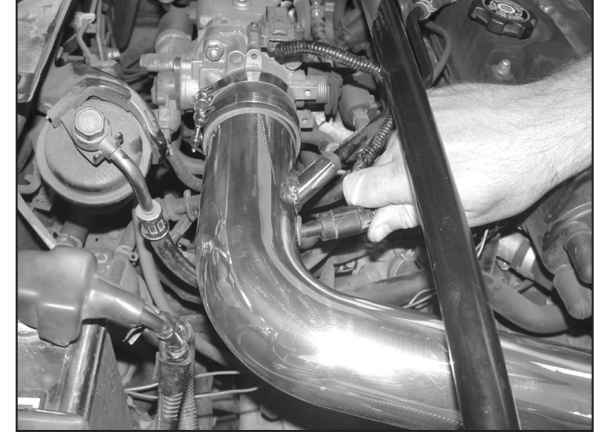
15. Install the provided silicone hose into the vent on the K&N® short ram tube as shown.



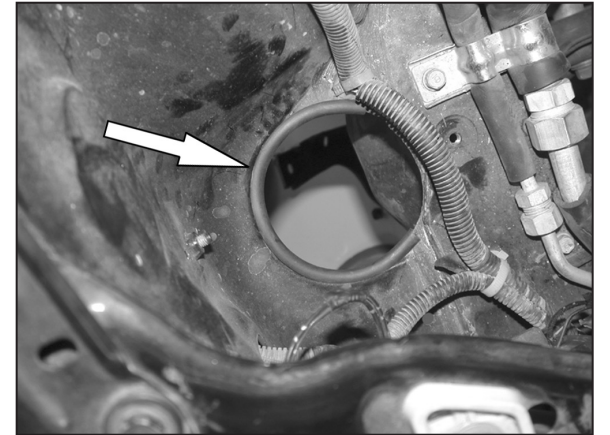
16. Slide the K&N® short ram tube into the silicone hose on the throttle body while inserting the stock crank case vent hard line into the vent on the K&N® short ram tube as shown.



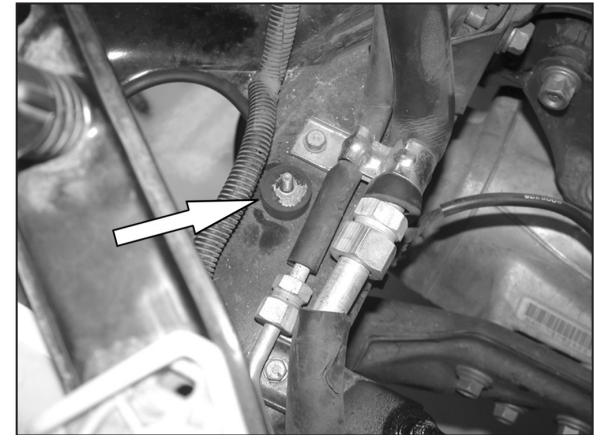
17. Line up the tube bracket with the wire harness bracket and secure with the stock bolt from step 13.



18. Install the air temperature sensor into the grommet on the K&N® short ram tube as shown.



19. Install the provided edge trim onto the hole in the inner fender as shown.



20. Install the provided rubber mounted stud into the threaded hole on the inner fender as shown.



21. Install the silicone hump hose and hose clamps onto the K&N® short ram tube as shown but do not tighten at this time.



22. Slide the K&N® cold air tube into the hole in the inner fender as shown.

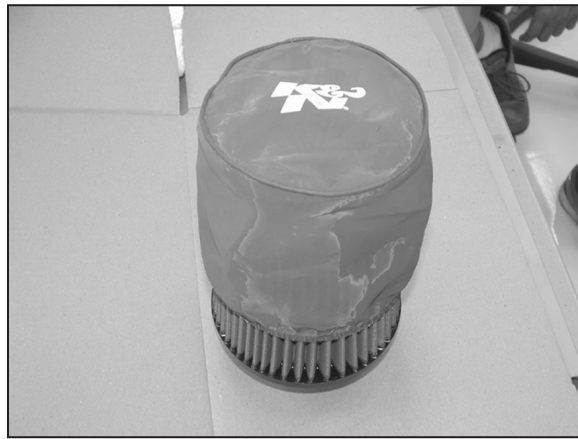
NOTE: Before installing the cold air tube, inspect the inside of the tube for any debris, then clean the inside out with water and a towel. Inspect the tube one more time before proceeding to the next step.



23. Slide the cold air tube into the silicone hump hose as shown.



24. Line up the tube bracket with the rubber mounted stud on the inner fender then, secure it with the provided hardware as shown.



25. Slide the K&N® Drycharger onto the K&N® Air Filter as shown.



26. Slide the K&N® Air Filter onto the K&N® cold air tube and secure with the provided hose clamp.



27. Align everything for best fit and clearance and tighten all hardware.

28. Reverse the removal process and reinstall the center splash guard and the inner fender valance.

29. Remount the tire and torque to factory specs.



30. Reconnect the vehicle's negative battery cable. Double check to make sure everything is tight and properly positioned before starting the vehicle.

31. The C.A.R.B. exemption sticker, (attached), must be visible under the hood so that an emissions inspector can see it when the vehicle is required to be tested for emissions. California requires testing every two years, other states may vary.

32. It will be necessary for all K&N® high flow intake systems to be checked periodically for realignment, clearance and tightening of all connections. Failure to follow the above instructions or proper maintenance may void warranty.

ROAD TESTING:

1. Start the engine with the transmission in neutral or park, and the parking brake engaged. Listen for air leaks or odd noises. For air leaks secure hoses and connections. For odd noises, find cause and repair before proceeding. This kit will function identically to the factory system except for being louder and much more responsive.

2. Test drive the vehicle. Listen for odd noises or rattles and fix as necessary.

3. If road test is fine, you can now enjoy the added power and performance from your kit.

4. K&N Engineering, Inc., requires cleaning the intake system's air filter element every 100,000 miles. When used in dusty or off-road environments, our filters will require cleaning more often. We recommend that you visually inspect your filter once every 25,000 miles to determine if the screen is still visible. When the screen is no longer visible some place on the filter element, it is time to clean it. To clean and re-oil, purchase our filter Recharger® service kit, part number 99-5050 or 99-5000 and follow the easy instructions.

INTAKE SYSTEMS FOR VEHICLES LISTED ARE 50 STATE LEGAL. SEE KNFILTERS.COM FOR CARB STATUS ON EACH PART FOR A SPECIFIC VEHICLE.