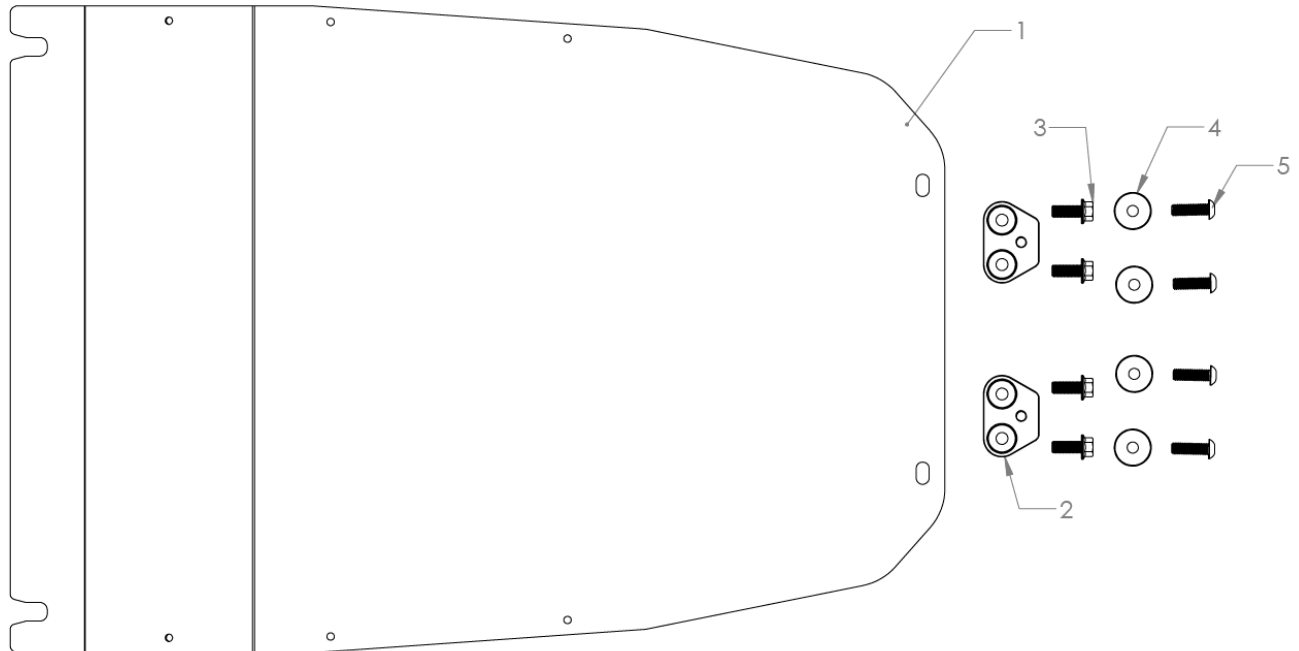




79C27020
aFe Power Terra Guard Engine Skid Plate
Subaru Outback 20+ BT Platform



Item	Description	P/N	Qty
1	Skid Plate, Engine, 20-24 Subaru Outback	05-61493	1
2	Spacer, 1": Subaru	05-61492	2
3	Hex Flange Bolt: M10 x 1.25 x 25	03-50807	4
4	Washer, Flat: 3/8" ID, 1.25 OD, .100 THK	03-50488	4
5	Button Head Bolt: 3/8-16 x 1-1/4 S/S	03-50827	4

Fitment Note

This Skid Plate is a direct fit for the following aFe POWER Terra Guard Bumpers

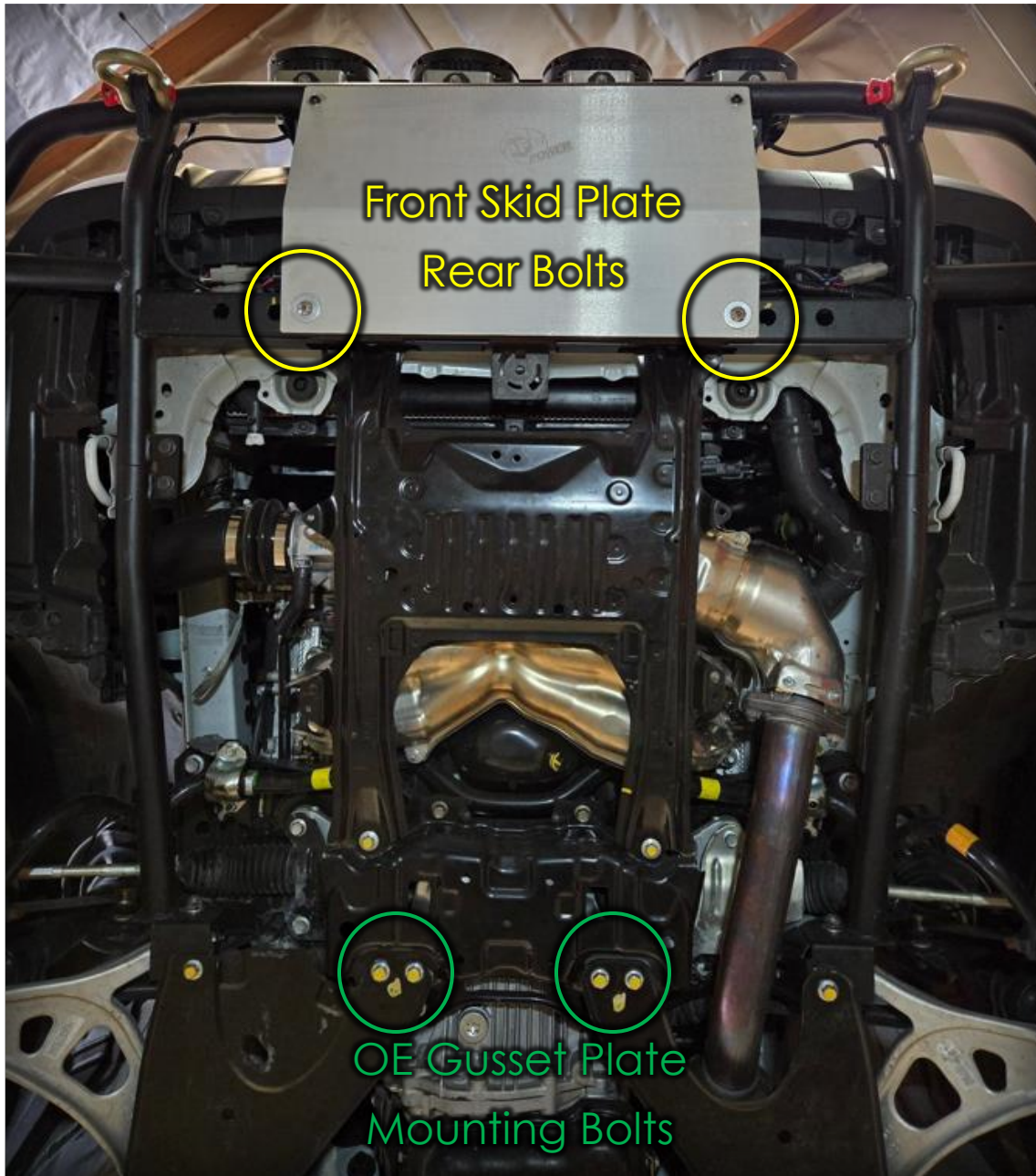
- 79-27009
- 79-27012
- 79-27015
- 79-27016
- 79-27017
- 79-27018



- Please read the entire instruction manual before proceeding.
- Ensure all components listed are present.
- For technical support please call 951-493-7185.
- Ensure you have all necessary tools before proceeding.
- Retain factory parts for future use.

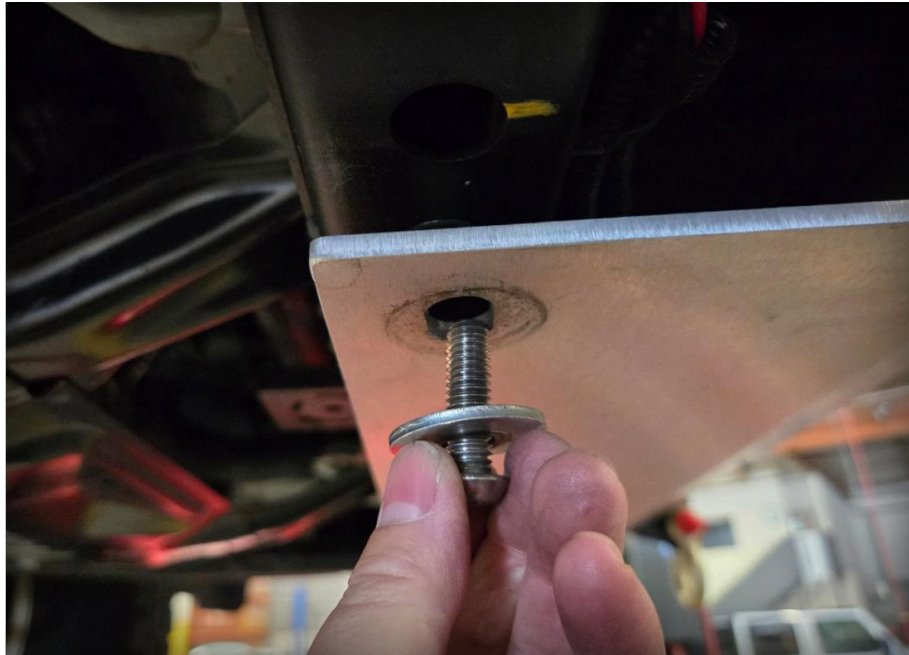
Procedure:

1. This engine skid plate is a direct fit for our aFe POWER Terra Guard bumpers for the 20+ Subaru Outback BT platform. This skid plate is only compatible with aFe bumpers. The aFe engine skid plate can be installed with or without the front aFe skid plate, but for full protection we recommend installing both skid plates.
2. Lift the vehicle using floor ramps or a lift. Observe the layout of the mounting points.

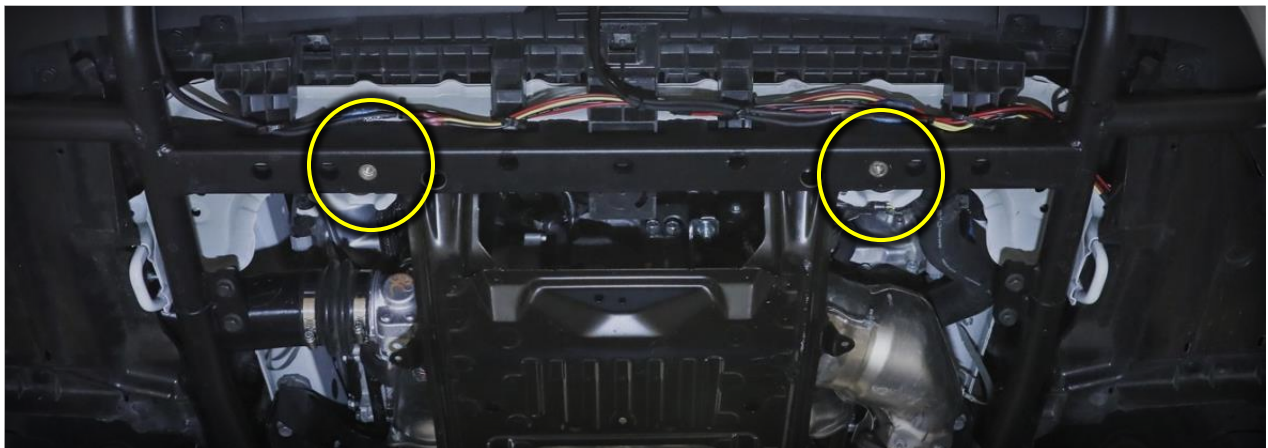




3. Remove the (2) front skid plate rear bolts and replace with the included button head bolt and large washer. Leave them loose with about a 1/4" gap between the front skid plate and crossmember.



If you do not have our front skid plate, Install the button head bolts and washers onto the bumper crossmember's 3/8 rivnut holes. Leave loose with about a 1/4" gap between the washer and the bumper crossmember.

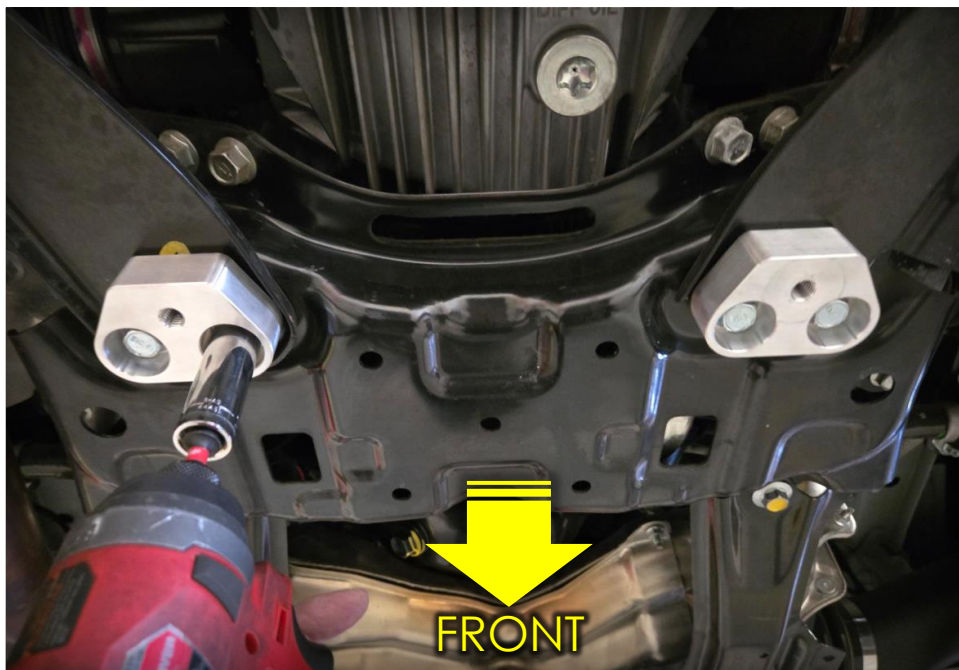




4. Remove the (4) OE gusset plate bolts.

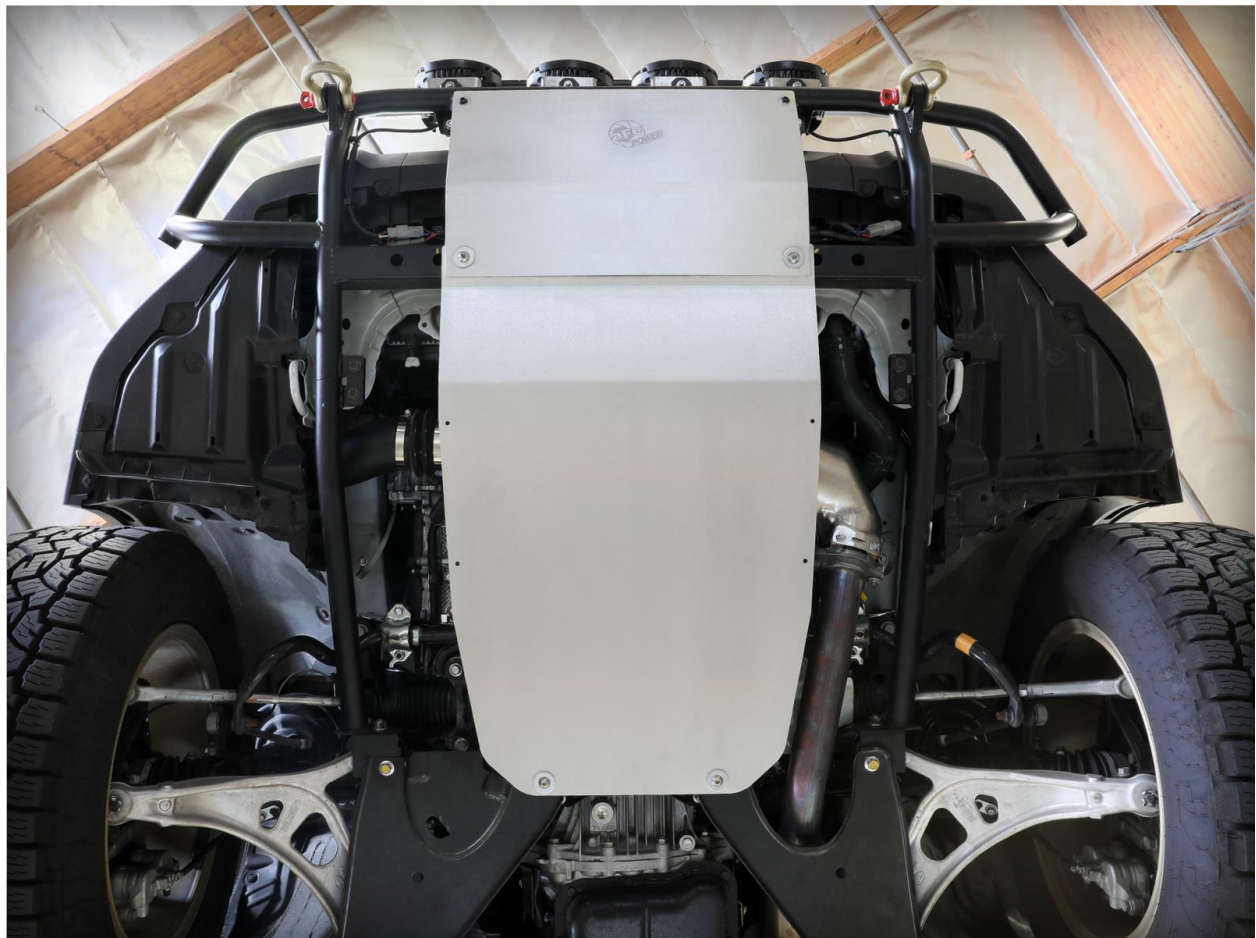
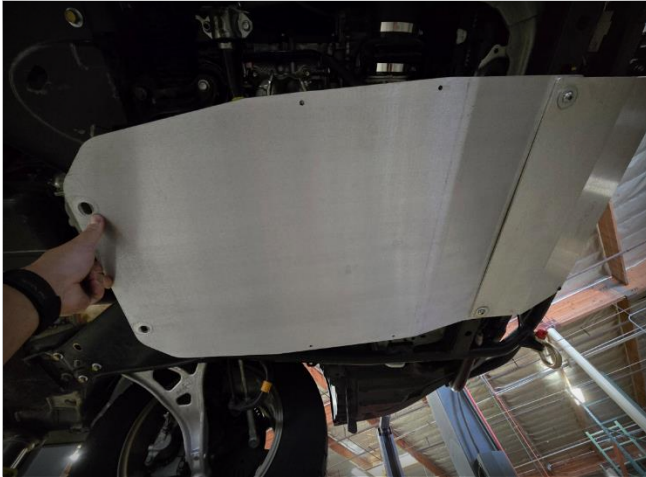


5. Install the aFe spacers using the included longer M10 flanged bolts. Fully tighten.





6. Install the skid plate with the open slots in the front. The front should slide in and sandwich between the front skid plate and the bumper crossmember. Secure the rear with the included button head bolts and large washers. Fully tighten front and rear button head bolts. You are now done with the engine skid plate install.





advanced FLOW engineering, inc.