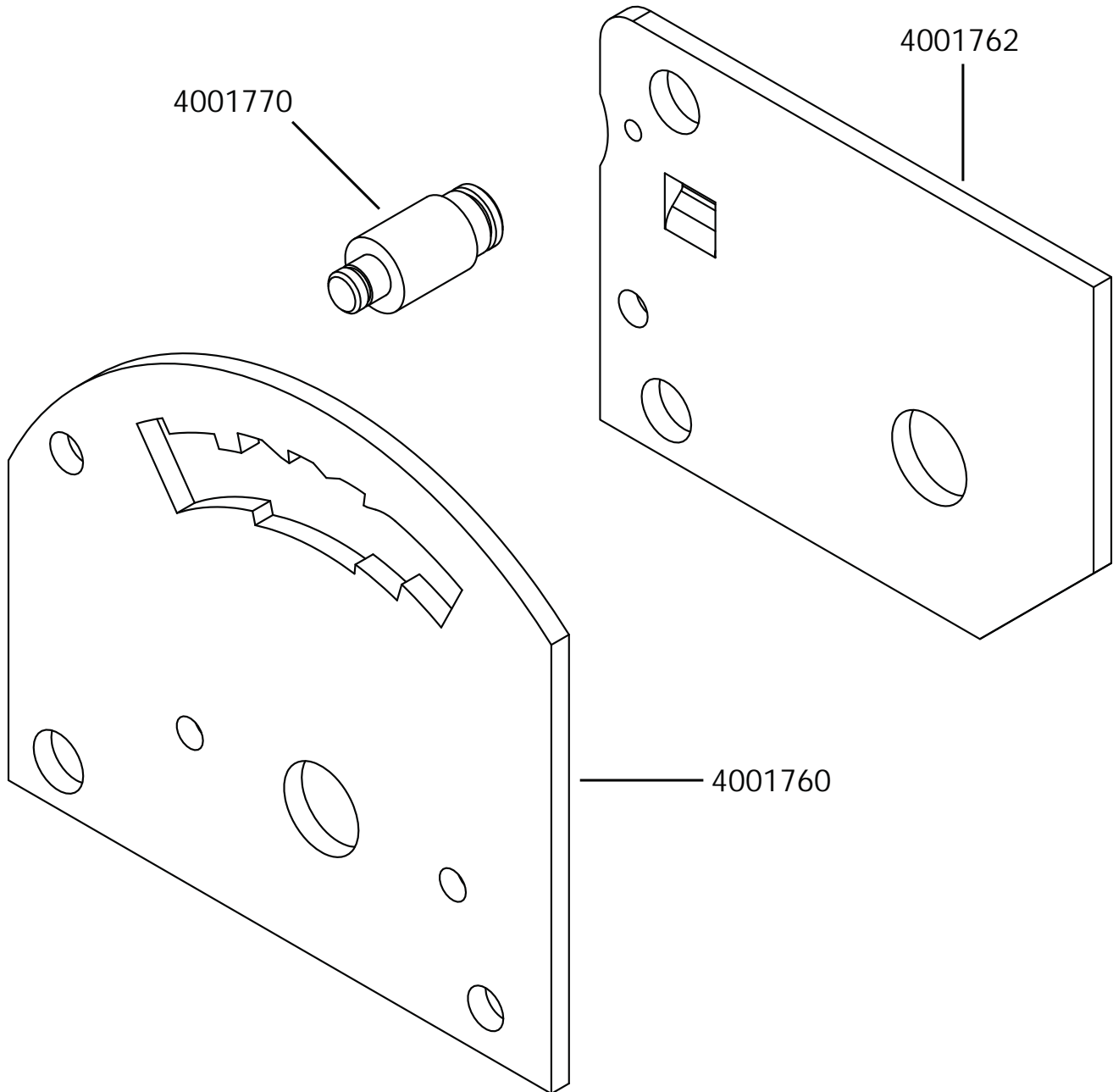




Installation Instructions for
80733
OFF ROAD PATTERN GATE PLATE
KIT, 3 SPEED
FITS: PRO STICK AND STREET
BANDIT MODELS



PART NO.	DESCRIPTION	QTY.
4001760	Gate Plate	1
4001762	Lockout Delete Plate	1
4001770	Shaft	1

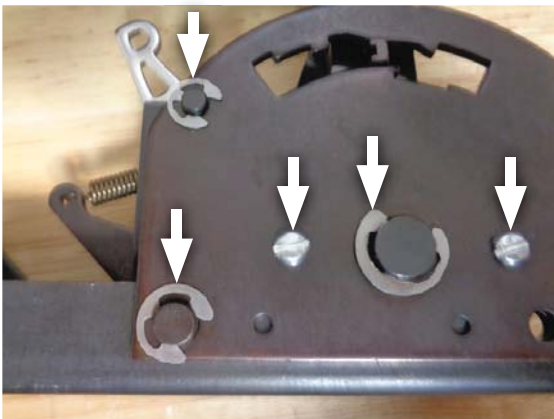
REVIEW INSTRUCTIONS AND VERIFY KIT CONTENTS:

1. Please take a moment to read and understand these instructions before installing your Gate Plate Kit. Use the parts drawing and list to verify contents.

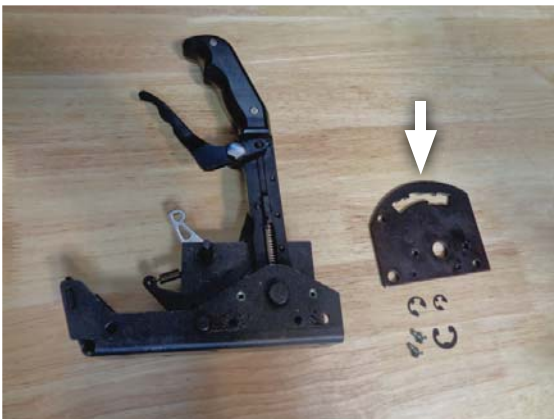


2. Set existing shifter assembly on a work bench and gather components from gate plate kit.

DISASSEMBLE SHIFTER:



3. Carefully remove screws (x2) and e-clips (x3) securing gate plate to shifter for later re-use.



4. Remove gate plate from shifter.



5. Disengage detent arm from detent plate, then remove small pin, spring washer and spacers (x2). (parts re-assembled same order in step 14)



6. Remove e-clip, spring washer, actuator and large pin.



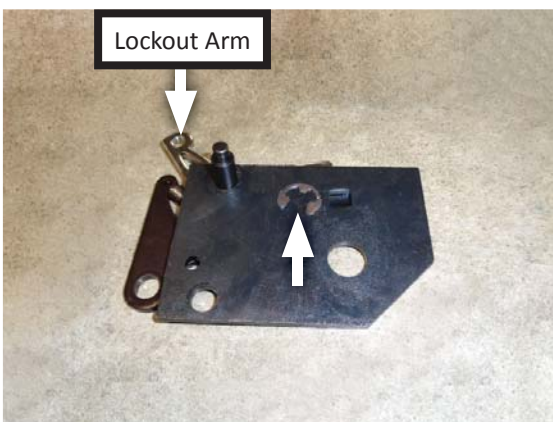
7. Remove shift handle assembly and spacer.



8. Remove reverse lockout assembly.



9. Disconnect detent arm spring from lockout arm.

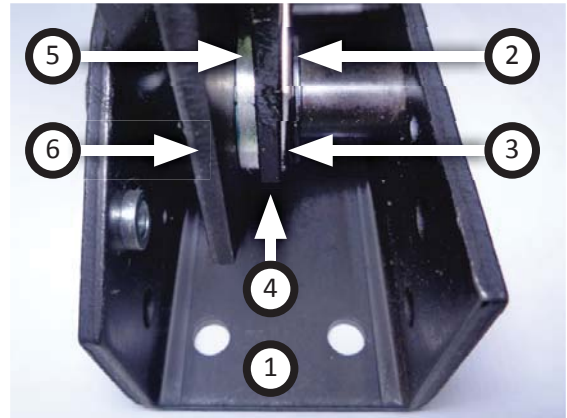


10. Remove e-clip from pin then remove lockout arm from reverse lockout plate. Pin, arm and plate will not be re-used.

Install Off Road Pattern Gate Plate kit:



11. Attach detent arm spring to **lockout delete plate (4001762-88)** then place spacer (removed step 7) on top.



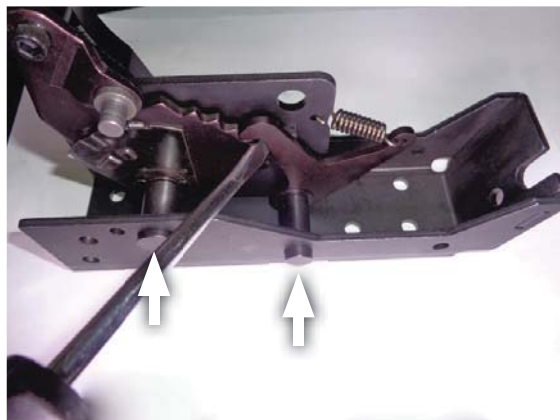
12. Insert large pin through base (1), spring washer (2), actuator (3), shift handle assembly (4), washer (5) and lockout delete plate (6). (removed step 6 and 7)



13. Secure assembly by installing e-clip (removed step 6) into groove on large pin.



14. Insert small pin through shifter assembly in this order; base, spring washer, detent arm, small washer, lockout delete plate and large spacer. (removed step 5)



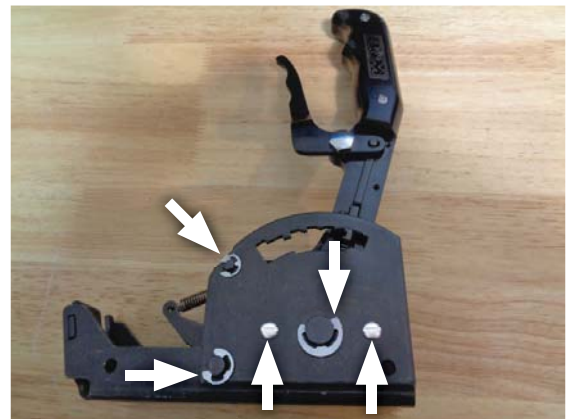
15. Raise shift handle, push pins fully into base then push detent arm onto shift handle detent plate.



16. Insert **shaft (4001770-88)** into lockout delete plate as per drawing, then install e-clip (removed step 10) onto shaft.



17. Place **gate plate (4001760-88)** onto shifter assembly, align pins to holes, then lightly squeeze trigger until it sets in place.



18. Install e-clips (x3) onto pins (at snap ring grooves) and install screws (x2) (removed step 3) to secure gate plate to shifter.

Congratulations, the installation of your Off Road Pattern Gate Plate is now complete!

NOTE: B&M maintains a highly trained technical service department to answer your technical questions, provide additional product information and offer various recommendations.

Technical Service: (707) 544-4761
Monday – Friday: 7:30 am to 5:00 pm Pacific Time
(Closed Saturday and Sunday)

MAIN OFFICE:
100 Stony Point RD., Suite 125
Santa Rosa, CA 95401

