



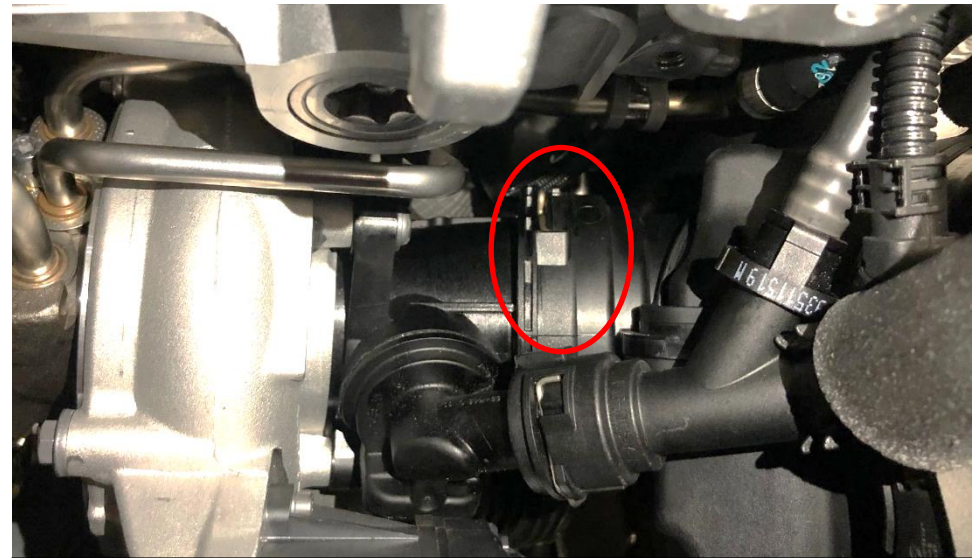
1. We will start by removing the stock airbox. Loosen and remove the rubber inlet tube and disconnect the temperature sensor plug.



2. The airbox can now be pulled out. Make sure the rubber mounting bushes are still on the car – if not, remove from the airbox and install back onto the chassis.



3. To remove the rubber intake tube – firstly pull out the spring clip around the tube at the turbo inlet end. The next photo shows a close up.



4. Pull the spring clip away from the tube flange and this will allow you to pull the tube away from the turbo. There is also a breather connector to remove – see next step.





5. Remove the breather connector from the tube.



6. Remove the inlet tube completely from the engine.



7. Remove the temperature sensor from the airbox.



8. Take the machined flange and the silicon reducer – we will now prepare these for installation onto the turbo inlet.



9. Remove the rubber O-ring from inside the OEM tube and also the spring clip.



10. Insert the O-ring into the new flange as shown. The flat face of the O-ring should face the turbo side.



11. Install the spring clip as shown.



12. Now push the silicon onto the flange with the 2 hose clamps and only tighten the clamp around the flange.





13. Install the flange assembly onto the turbo inlet – it will click into place.



14. Take the inlet tube, filter, sealing plate and the M5 screws with lock washers.



15. Push the sealing plate onto the tube – ensure the **INSIDE** label is facing the filter side. Now push the filter fully onto the tube and secure with the attached clamp.



16. Insert the filter into the airbox and line up the holes on the sealing plate. Secure with the supplied M5 screws and lock washers.

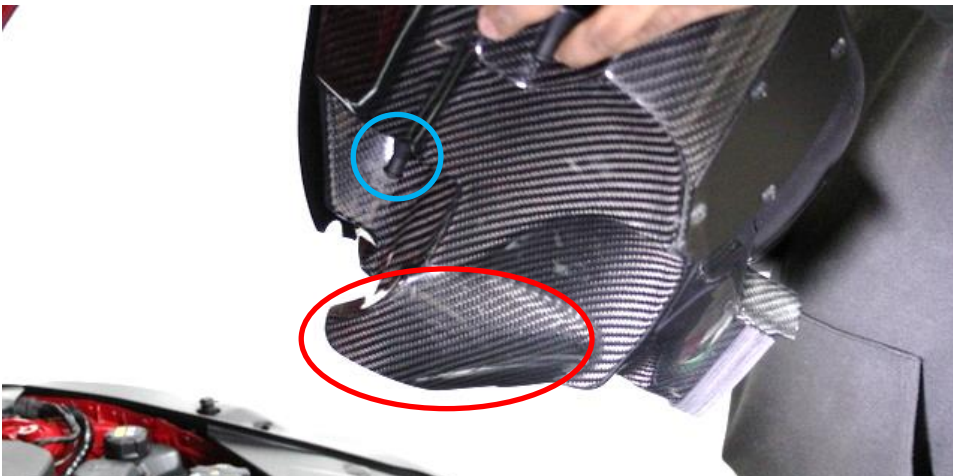




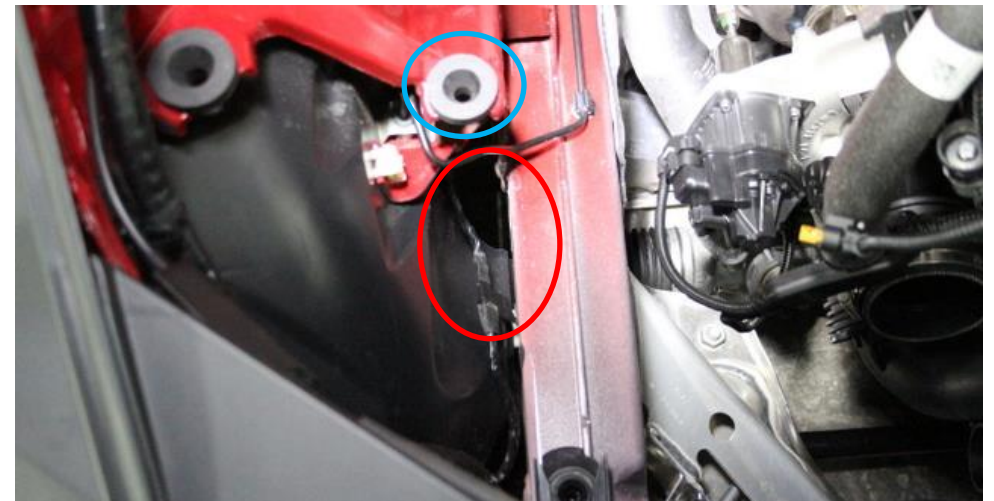
17. Another view of the sealing plate secured to the airbox.



18. Install the temperature sensor onto the tube using the supplied screws. DO NOT use the stock screws.

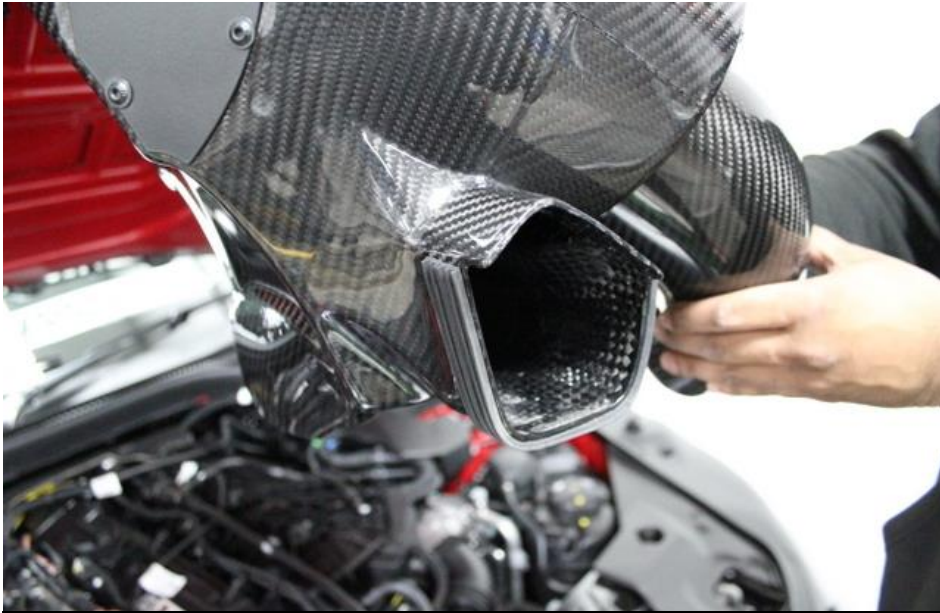


19. Carefully lower the airbox into the engine bay. Note that the secondary scoop circled above goes into the gap shown in the next photo. Also the mount circled blue should sit in the rubber mount shown in next photo.

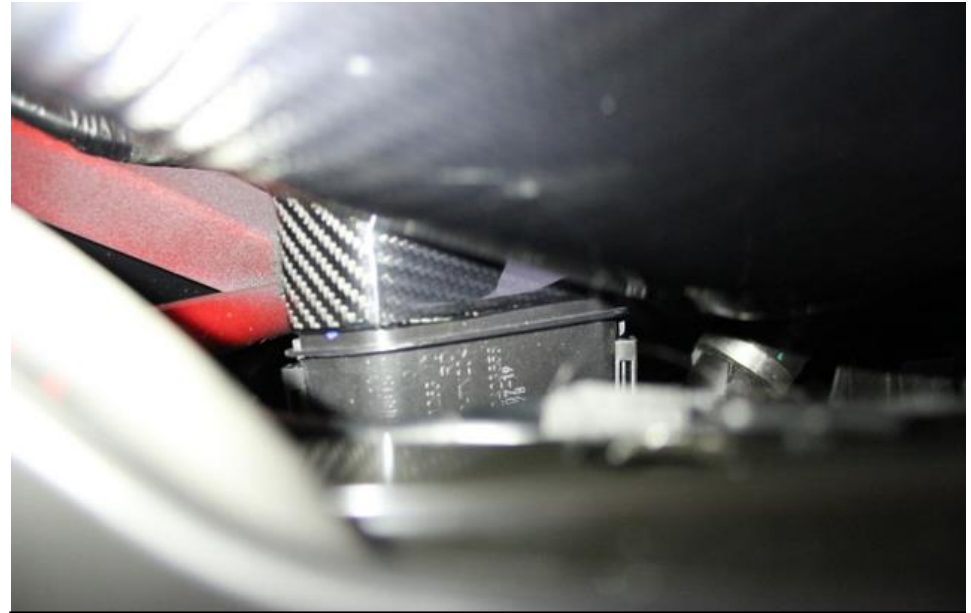


20. Gap in the wheel arch area and rubber mount.





21. The main opening of the airbox should sit inside the stock duct – next photo.



22. Ensure the opening sits squarely on the stock duct.

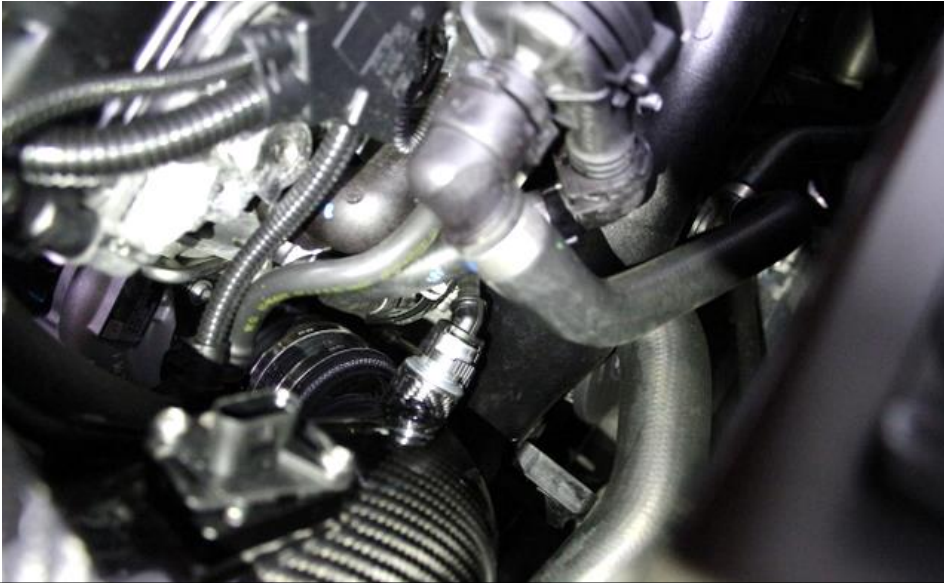


23. Lower the airbox with the tube angled downwards and ensure the mount and secondary scoop go into place as described previously.

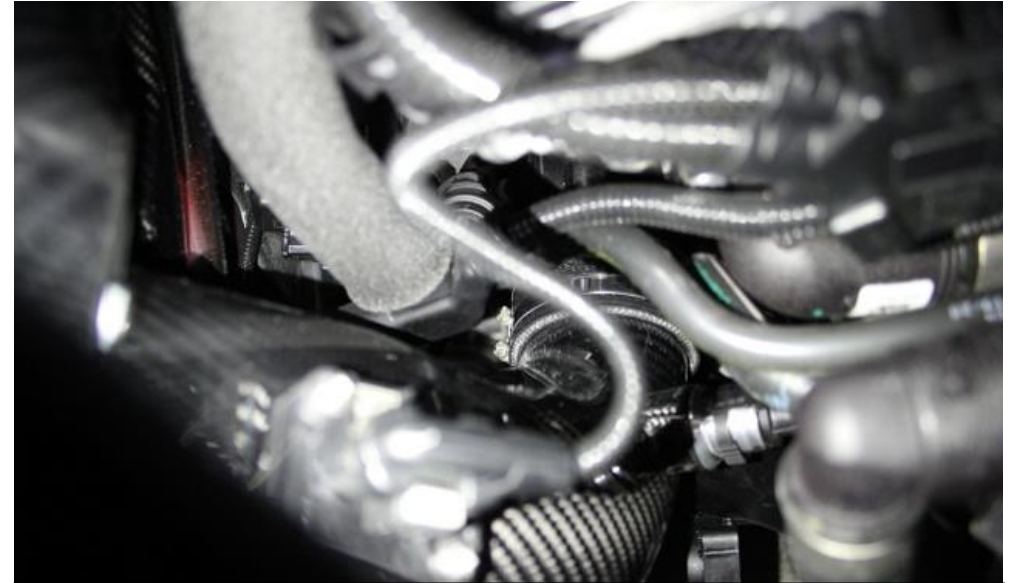


24. locate and push the top mount into the upper rubber bush.





25. Rotate the tube into the silicon and connect the breather plug.



26. Secure the remaining hose clamp around the carbon tube – DO NOT overtighten.



27. Connect the temperature sensor plug.

**You have now completed the installation of the Eventuri A90 Supra System.**

Eventuri cannot take responsibility for an incorrectly installed intake or any damage caused during installation.

Installation is now complete.



