



Equipped with AEM® Dryflow™ Filter
No Oil Required!

INSTALLATION INSTRUCTIONS

PART NUMBER

21-793C (GUN METAL GRAY FINISH)

2016

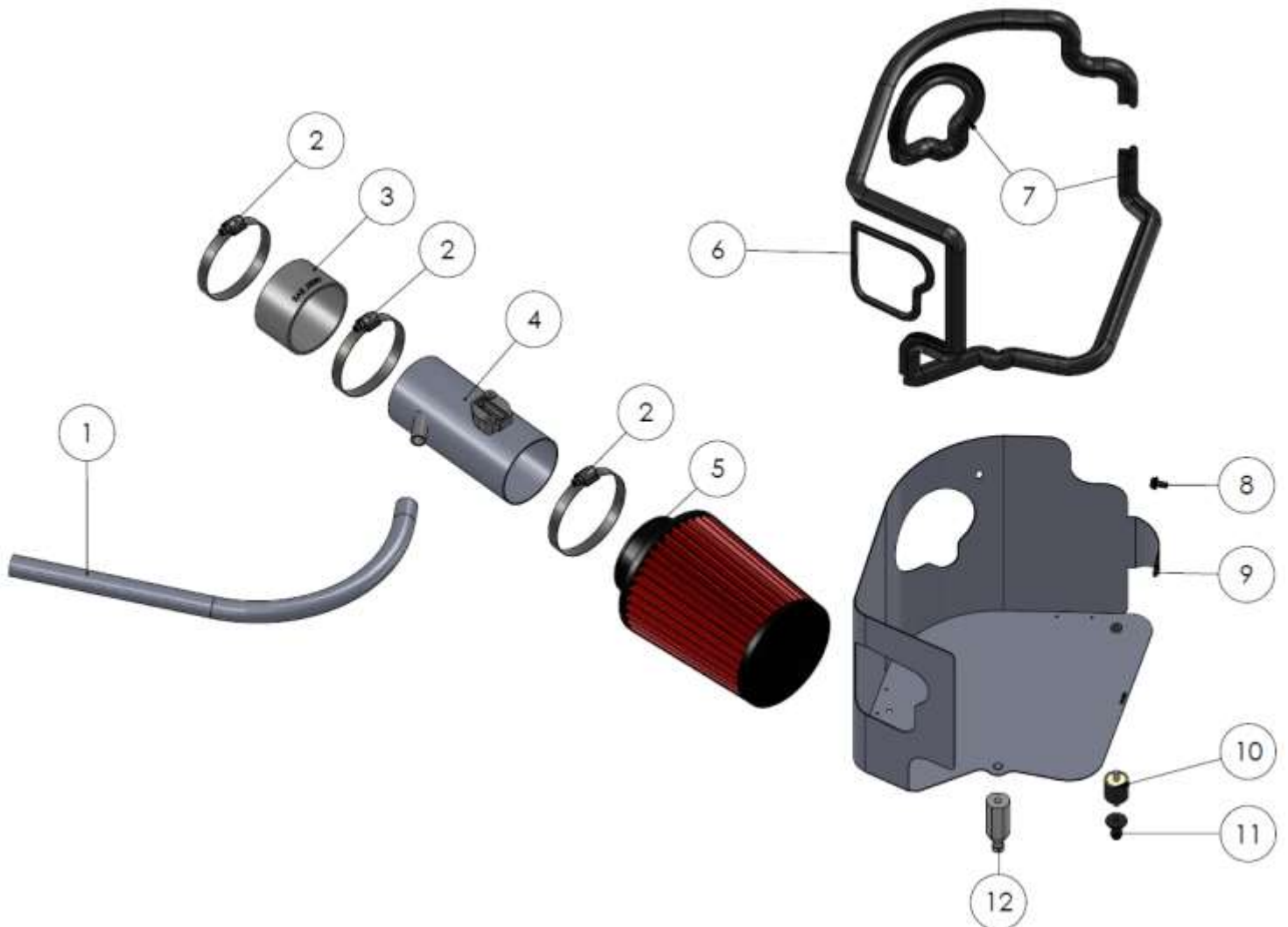
NISSAN

MAXIMA

3.5L

Not legal for sale or use on any pollution controlled motor vehicle in California or states adopting California emission procedures. See AEMIntakes.com for CARB status on each part for a specific vehicle.

ITEM NO.	PART NUMBER	DESCRIPTION	QTY.
1	5-7021	HOSE; 5/8"ID X 21"L	1
2	9452	1/2" BNDHOSE CLAMP,2.90"-3.75"	3
3	08690	HOSE; 3-1/4" ID X 2" L REINFORCED	1
4	2-1571C	INTAKE TUBE; 3.25"OD X 7", 21-793 ; GUNMETAL GREY	1
5	21-2113DK	AIR FILTER; 3.25" X 7" DRYFLOW	1
6	102451	EDGE TRIM; 1/16" GAP, 19"L	1
7	102503	EDGE TRIM; 3/4 BULB, TOP LOC, 83"L	1
8	1-2110	BOLT; HEX/FLANGE M6-1.0 X 12	1
9	20-8578	HEAT SHIELD, NISSAN MAXIMA, 2016, TB/PC	1
10	1228599	MOUNT, RUBBER 1" X 6MM	1
11	8-186-1	MOUNT, PLASTIC AIRBOX, NYLON	1
12	06532	STANDOFF; 6.0 FORD AIRBOX	1



Read and understand these instructions **BEFORE** attempting to install this product. Failure to follow installation instructions and not using the provided hardware may damage the intake tube, throttle body and engine. If you need any assistance please call 1-800-858-3333 to speak with a representative in our Customer Service Center before returning the product.

Tools Needed:	Optional:
Screwdriver	Small Torque Wrench
10mm Socket	
Socket Driver	
Side Cutters:	

1. Preparing Vehicle

- Make sure vehicle is parked on level surface.
- Set the parking brake.
- If engine has run in the past two hours, let it cool down.
- Disconnect negative battery terminal.
- Do not discard stock components after removal of the factory system.
- Open the air intake kit package and make sure all parts are included.

2. Removal of stock system



a. Remove the two bolts that hold the stock air scoop to the vehicle. These will be re-used in step 3m.



b. Remove the two bolts that hold the engine cover to the vehicle. They will be reinstalled in step 3n.



c. Release the pressure on the spring clamps and remove the vent hose from the vehicle. Then, remove the springs clamps and set aside. The clamps be reused in step 3j, the hose will not be used.



d. This picture is for reference for the following instructions 2e. & 2h. Note: This is what your upper intake assembly will look like once removed.



e. Remove the MAS (Mass Airflow Sensor) connector from the MAS. Then, squeeze and remove the two wiring harness clips secured to the upper air box. Reference picture 2d. to locate the rear clip.



g. Un-latch the two clips that secure the upper to lower air box.



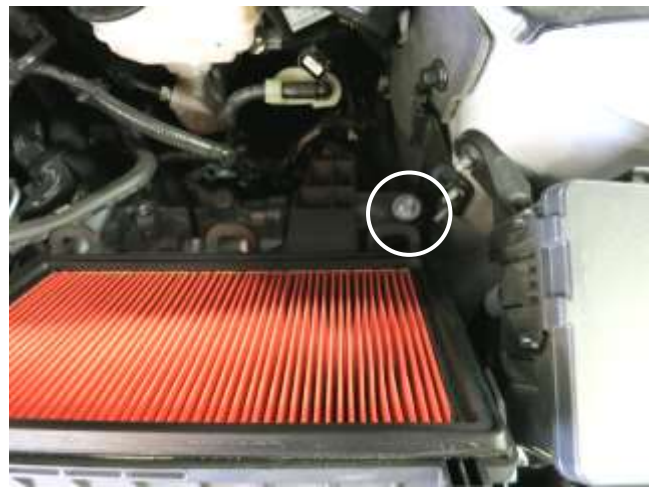
i. Remove the vent line clip on the side of the lower air box.



f. Loosen the hose clamp at the throttle body.



h. Remove the upper intake assembly from the vehicle. Reference picture 2d. to locate the push in fitting under the intake manifold.



j. Remove the bolt that secures the air box to the vehicle, and then remove the lower air box from the vehicle by pulling up and out of the rubber mounts. Note: Do not discard any of your stock equipment.



k. Remove the clip from its mount that secures the transmission vent line.



l. Remove the MAS from the upper air box. Note: The MAS and the screws will be reused in step 3d.

3. Installation of AEM[®] intake system.

- a. When installing the intake system, do not completely tighten the hose clamps or mounting hardware until instructed to do so.



a. Install the provided edge trims onto the heat shield as shown. Note: Trimming is necessary.



b. Install the provided hardware onto the bottom of the heat shield. Refer to the diagram on page 2 if needed.



c. Install the AEM intake tube into the hole in the heat shield.



d. Install the MAS and screws that were removed in step 21.



e. Install the provided coupler and hose clamps onto the throttle body. Tighten the hose clamp closest to the throttle body at this time to 30 in. lbs.



f. Install the heat shield into the vehicle aligning the push in mounts with the vehicles rubber grommets. Then align the AEM intake tube with the coupler.



g. Route the MAS harness through the hole via the opening in the bottom portion of the hole, then clip it onto the heat shield and reconnect it back onto the MAS.



h. Install and tighten the provided bolt from the heat shield to the bracket on the inner fender.



i. Install the transmission vent line clips to the heat shield from the bottom.



j. Install the spring clamps that were removed in step 2c. onto the provided vent line as shown.



k. Install the completed vent line onto the AEM intake tube and the 90° fitting. Then, secure with the spring clamps.



l. Install the AEM filter onto the AEM intake tube and tighten the hose clamp to 30 in. lbs.



m. Install the stock air scoop into the AEM heat shield and then secure to the vehicle with the hardware that was removed in step 2a.



n. Install the engine cover with the hardware that was removed in step 2b.



STOCK INTAKE INSTALLED



AEM INTAKE INSTALLED

4. Reassemble Vehicle

- a. Position all kit components for best fitment. Ensure that no components contact any unintended part of the vehicle.
- b. Check for proper hood clearance. Re-adjust components if necessary and re-tighten them.
- c. Inspect the engine bay for any loose tools and ensured that all fasteners that were moved or removed are properly tightened.
- d. Reconnect negative battery terminal and start engine. Let the vehicle idle for 3 minutes. Perform a final inspection before driving the vehicle.

5. Service and Maintenance

- a. AEM Induction Systems requires cleaning the intake system's air filter element every 100,000 miles. When used in dusty or off-road environments, our filters will require cleaning more often. We recommend that you visually inspect your filter once every 25,000 miles to determine if the screen is still visible. When the screen is no longer visible some place on the filter element, it is time to clean it. To clean, purchase our Synthetic air filter cleaner, part number 1-1000 and follow the easy instructions.
- b. Use window cleaner to clean your powder coated AEM[®] intake tube.

NOTE: DO NOT USE aluminum polish on powder coated AEM[®] intake tubes.

For technical inquiries
e-mail us at
sales@aemintakes.com
or
call us at
800.992.3000

AEM Air Intake System Warranty Policy

AEM® warrants that its intake systems will last for the life of your vehicle. AEM® will not honor this warranty due to mechanical damage (i.e. improper installation or fitment), damage from misuse, accidents or flying debris. AEM® will not warrant its powder coating if the finish has been cleaned with a hydrocarbon-based solvent. The powder coating should only be cleaned with a mild soap and water solution. Proof of purchase of both the vehicle and AEM® intake system is required for redemption of a warranty claim.

This warranty is limited to the repair or replacement of the AEM® part. In no event shall this warranty exceed the original purchase price of the AEM® part nor shall AEM® be responsible for special, incidental or consequential damages or cost incurred due to the failure of this product. Warranty claims to AEM® must be transportation prepaid and accompanied with dated proof of purchase. This warranty applies only to the original purchaser of product and is nontransferable. Improper use or installation, use for racing, accident, abuse, unauthorized repairs or alterations voids this warranty. AEM® disclaims any liability for consequential damages due to breach of any written or implied warranty on all products manufactured by AEM®. Warranty returns will only be accepted by AEM® when accompanied by a valid Return Merchandise Authorization (RMA) number. Credit for defective products will be issued pending inspection. Product must be received by AEM® within 30 days of the date RMA is issued.

If you have a warranty issue, please call (800) 992-3000 and our customer service department will assist you. A proof of purchase is required for all AEM® warranty claims.

Not legal for sale or use on any pollution controlled motor vehicle in California or states adopting California emission procedures. See AEMIntakes.com for CARB status on each part for a specific vehicle.