

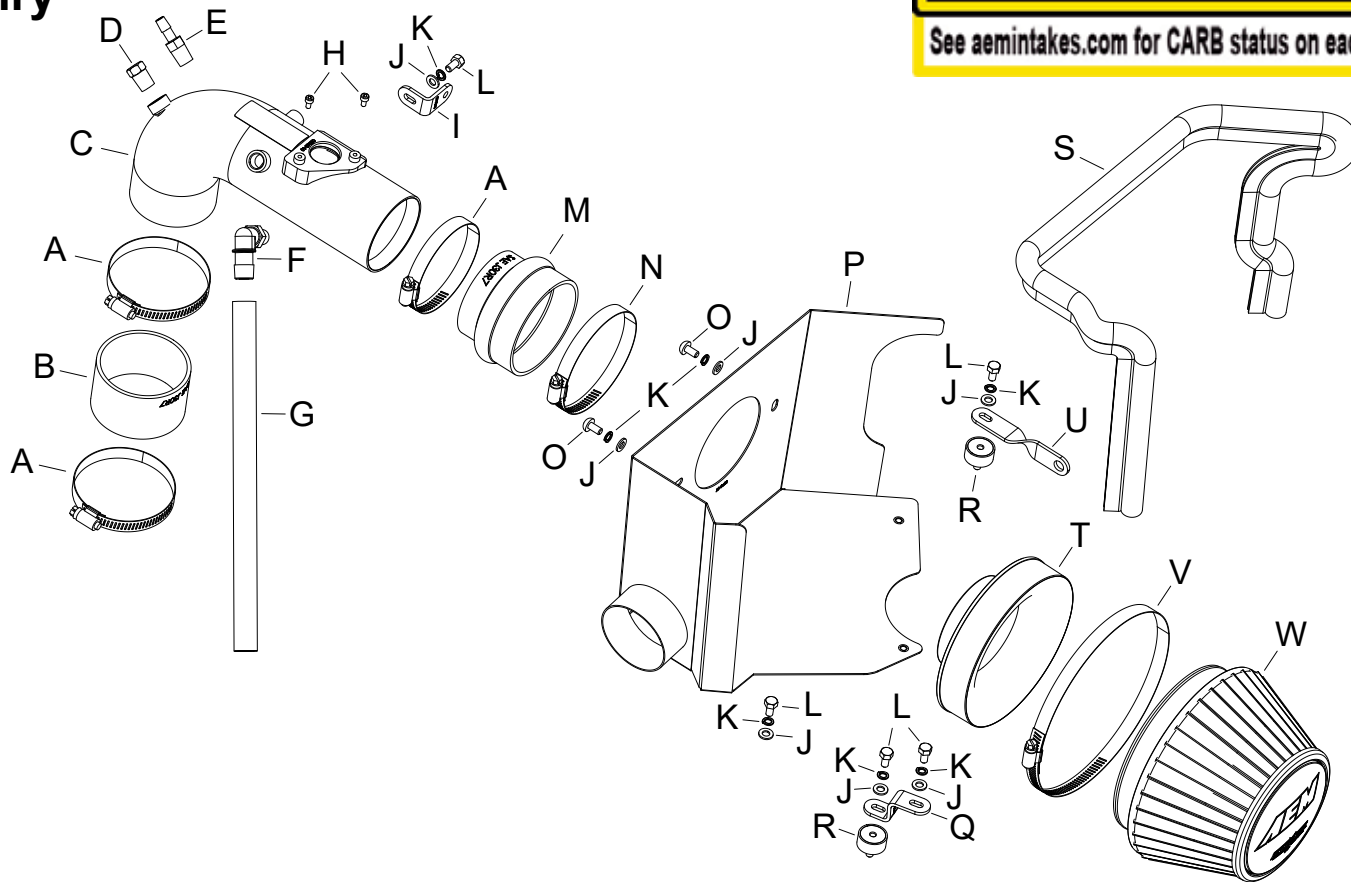


## INSTALLATION INSTRUCTIONS

**21-843C (Gun Metal Gray Finish)**  
**TOYOTA**  
**2012-17 Camry**  
**L4-2.5L**

**NOT LEGAL FOR SALE OR USE ON ANY POLLUTION CONTROLLED MOTOR VEHICLE IN CALIFORNIA OR STATES ADOPTING CALIFORNIA EMISSION PROCEDURES.**

See [aemintakes.com](http://aemintakes.com) for CARB status on each part for a specific vehicle



### TOOLS NEEDED:

3mm allen key  
 10mm socket  
 16mm socket  
 ratchet  
 extension  
 flat blade screw driver  
 philips screw driver  
 pliers

### PARTS LIST:

Description	Qty.	Part #	Description	Qty.	Part #	Description	Qty.	Part #
A HOSE CLAMP #48	3	08601	I BRACKET; 69-2521, "L", SML	1	070066A	Q BRACKET; 69-6026, "Z", STL	1	070061A
B HOSE, SILICONE 3.00X2"	1	5-302	J WASHER; 6MM FLAT, SS	7	08269	R STUD; RUBBER MNT, M/F, 1/2"L	2	070228
C INTAKE TUBE	1	2-1613	K WASHER, M6 SPLIT LOCK ZINC	7	1-3025	S EDGE TRIM (39")	1	102496
D PLUG; 1/4 NPT, PLASTIC	1	08032	L BOLT; M6 X 1.00 X 12MM, HEX	5	07727	T ADAPTER; UNIVERSAL, 6"	1	21512-1
E FITTING; BARBED, 5/16"	1	08908	M HOSE; HUMP 3.5" TO 3"ID	1	084079	U BRACKET; 63-1015, SHORT	1	070702
F FITTING; VENT 1/4NPT	1	08525	N HOSE CLAMP #56	1	08620	V 1/2" BNDHOSE CLAMP, 4.125	1	94104
G HOSE; 1/2"ID X 12"L	1	087031	O BOLT; M6 X 1.00" 12MM, SS	2	07794	W FILTER CHARGER	1	21-209DK
H BOLT; M4 - 0.07 8MM, A/H CAP	2	07733	P HEAT SHIELD	1	20-8622			

**If you need any assistance please call 1-800-858-3333 to speak with a representative in our Customer Service Center before returning the product.**

**Read and understand these instructions BEFORE attempting to install this product. Failure to follow installation instructions and not using the provided hardware may damage the intake tube, throttle body and engine.**

### TO START:

1. Turn off the ignition and disconnect the negative battery cable.

**NOTE: Disconnecting the negative battery cable erases pre-programmed electronic memories. Write down all memory settings before disconnecting the negative battery cable. Some radios will require an anti-theft code to be entered after the battery is reconnected. The anti-theft code is typically supplied with your owner's manual. In the event your vehicles anti-theft code cannot be recovered, contact an authorized dealership to obtain your vehicles anti-theft code.**



2. Disconnect the mass air sensor electrical connection.



3. Disconnect the EVAP solenoid electrical connection.



4. Release the spring clamps and remove the crank case vent line from the valve cover and intake tube.



5. Loosen the hose clamp that secures the factory intake hose to the air filter housing.



6. Release the two clips that secure the upper air filter housing, remove the upper air filter housing and factory air filter.



7. Remove the two bolts that secure the lower air filter housing. Lift up the lower air filter housing to unhook it from the mounting grommet and disconnect it from the fresh air duct. Then remove the lower housing from the vehicle.

**NOTE: AEM recommends that customers do not discard factory air intake.**



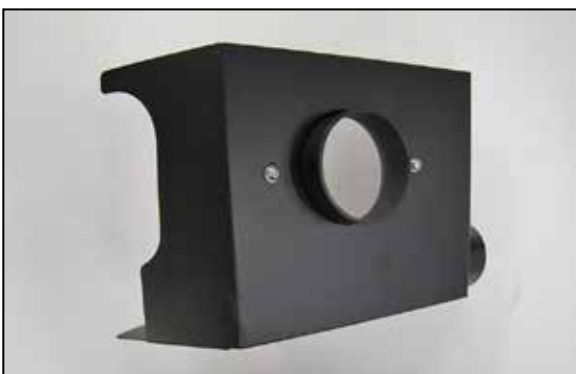
8. Unbolt the EVAP solenoid from the mounting bracket.



9. Loosen the hose clamp that secures the factory intake hose to the throttle body and then remove the intake hose from the vehicle.



10. Remove the bolt that secures the rear air filter housing mounting bracket to the strut tower and remove the bracket from the vehicle.



11. Install the filter adapter into the heat shield and secure with the provided hardware.



12. Install the provided rubber mounted studs onto the heat shield and secure with the provided hardware.



13. Install the provided edge trim onto the heat shield as shown.

**NOTE: Some trimming of the edge trim will be necessary.**



14. Install the heat shield mounting bracket (070702) onto the strut tower air filter housing mounting bracket location from step #10 using the hardware provided.



15. Install the heat shield into the vehicle so the fresh air duct slides over the fresh air tube on the heat shield. Secure the heat shield with the hardware provided.

**NOTE: use the provided "Z" bracket (070061) for the center mounting location.**



16. Install the provided coupler hose (5-302) into the throttle body and secure with the provided hose clamp.



17. Remove the mass air sensor from the factory air filter housing and install it into the AEM® intake tube using the provided hardware.



18. Install the 90° vent fitting into the AEM® intake tube as shown.

**NOTE: Plastic NPT fittings are easy to cross thread. Install the vent fitting "hand" tight, then turn it two complete turns with a wrench.**



19. Install the EVAP vent fitting into the AEM® intake tube. On vehicles that are not equipped with the EVAP vent hose from the factory install the npt plug into the AEM® intake tube.

**NOTE: Plastic NPT fittings are easy to cross thread. Install the vent fitting "hand" tight, then turn it two complete turns with a wrench.**



20. Install the EVAP solenoid mounting bracket (070066) onto the AEM® intake tube using the provided hardware.



21. Install the provided hump coupler (084079) onto the filter adapter installed into the heat shield and secure with the provided hose clamp.



22. Install the AEM® intake tube into the coupler hoses, align for best fit and then secure with the provided hose clamps.



23. Secure the EVAP solenoid to the bracket installed onto the intake tube using the factory screw.



24. Install the provided crank case vent hose onto the fitting installed into the intake tube and onto the vent port on the valve cover.



25. Reconnect the mass air sensor and EVAP solenoid electrical connections. Connect the EVAP vent line if equipped.



26. Install the AEM® air filter and secure with the provided hose clamp.



### Reassemble Vehicle

Position the inlet pipes for the best fitment. Be sure that the pipes or any other components do not contact any part of the vehicle. Tighten the rubber mount, all bolts, and hose clamps. Check for proper hood clearance. Re-adjust pipes if necessary and re-tighten them. Inspect the engine bay for any loose tools and check that all fasteners that were moved or removed are properly tightened. Reconnect negative battery terminal and start engine. Let the vehicle idle for 3 minutes. Perform a final inspection before driving the vehicle.

### Service and Maintenance

AEM Induction Systems requires cleaning the intake system's air filter element every 100,000 miles. When used in dusty or off-road environments, our filters will require cleaning more often. We recommend that you visually inspect your filter once every 25,000 miles to determine if the screen is still visible. When the screen is no longer visible some place on the filter element, it is time to clean it. To clean, purchase our Synthetic air filter cleaner, part number 99-0624 and follow the easy instructions. Use window cleaner to clean your powder coated AEM® intake tube.

**NOTE: DO NOT USE aluminum polish on powder coated AEM® intake tubes.**

NOT LEGAL FOR SALE OR USE ON ANY POLLUTION CONTROLLED MOTOR VEHICLE IN CALIFORNIA OR STATES ADOPTING CALIFORNIA EMISSION PROCEDURES.

See [aemintakes.com](http://aemintakes.com) for CARB status on each part for a specific vehicle

### AEM Air Intake System Warranty Policy

AEM® warrants that its intake systems will last for the life of your vehicle. AEM will not honor this warranty due to mechanical damage (i.e. improper installation or fitment), damage from misuse, accidents or flying debris. AEM will not warrant its powder coating if the finish has been cleaned with a hydrocarbon-based solvent. The powder coating should only be cleaned with a mild soap and water solution. Proof of purchase of both the vehicle and AEM intake system is required for redemption of a warranty claim.

This warranty is limited to the repair or replacement of the AEM part. In no event shall this warranty exceed the original purchase price of the AEM part nor shall AEM be responsible for special, incidental or consequential damages or cost incurred due to the failure of this product. Warranty claims to AEM must be transportation prepaid and accompanied with dated proof of purchase. This warranty applies only to the original purchaser of product and is nontransferable. Improper use or installation, use for racing, accident, abuse, unauthorized repairs or alterations voids this warranty. AEM disclaims any liability for consequential damages due to breach of any written or implied warranty on all products manufactured by AEM. Warranty returns will only be accepted by AEM when accompanied by a valid Return Merchandise Authorization (RMA) number. Credit for defective products will be issued pending inspection. Product must be received by AEM within 30 days of the date RMA is issued.

If you have a warranty issue, please call (800) 992-3000 and our customer service department will assist you. A proof of purchase is required for all AEM warranty claims.