



1. We will start by removing the stock airbox. Loosen and remove the rubber inlet tube and disconnect the sensor plug.



2. The airbox can now be pulled out. Make sure the rubber mounting bushes are still on the car – if not, remove from the airbox and install back onto the chassis.



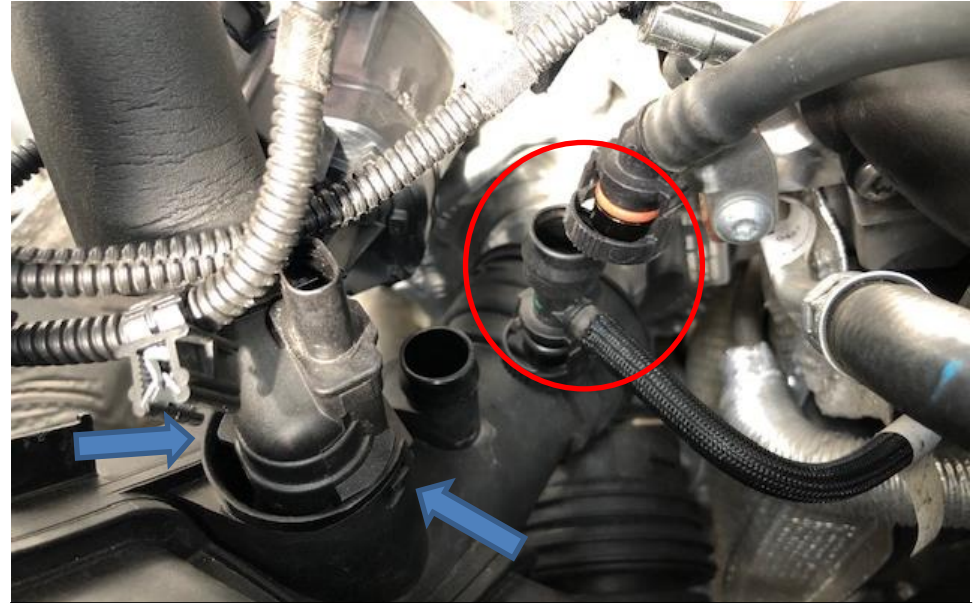
3. Unclip the sensor wire from the secondary box.



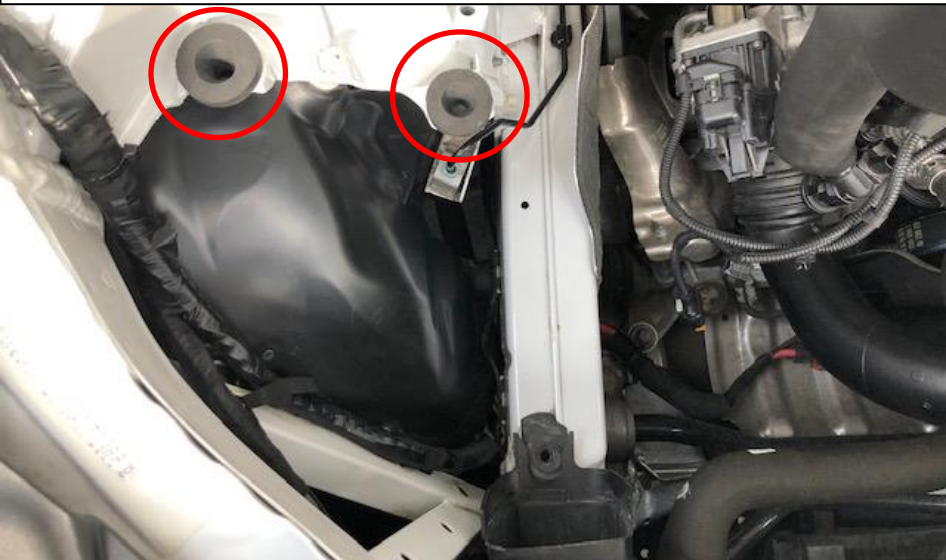
4. Pull the spring clip away from the turbo tube flange and this will allow you to pull the tube away from the turbo. Pull the tube off the turbo and then proceed to remove the breathers – see next steps.



5. Disconnect the plug on the inlet tube near the turbo.



6. Remove the breather hose (red circle) and also the large ventilation line which has the sensor built in. This can be removed by pressing in the clips on both sides (blue arrows) and



7. Remove the tube completely. Make sure the rubber mounts are in place.



8. Remove the clip and the internal ring gasket from the OEM tube at the turbo side. Note the orientation of the gasket before removal - it needs to be in the same direction on the new flange.



8b. Insert the O-ring into the new flange as shown. The flat face of the O-ring should face the turbo side.

8c. Install the spring clip as shown.



8d. Now push the provided silicon onto the flange with the 2 hose clamps and only tighten the clamp around the flange

8e. Push the flange assembly onto the turbo - it will click into place.



9. Take the inlet tube, filter, sealing plate and the M5 screws with lock washers.



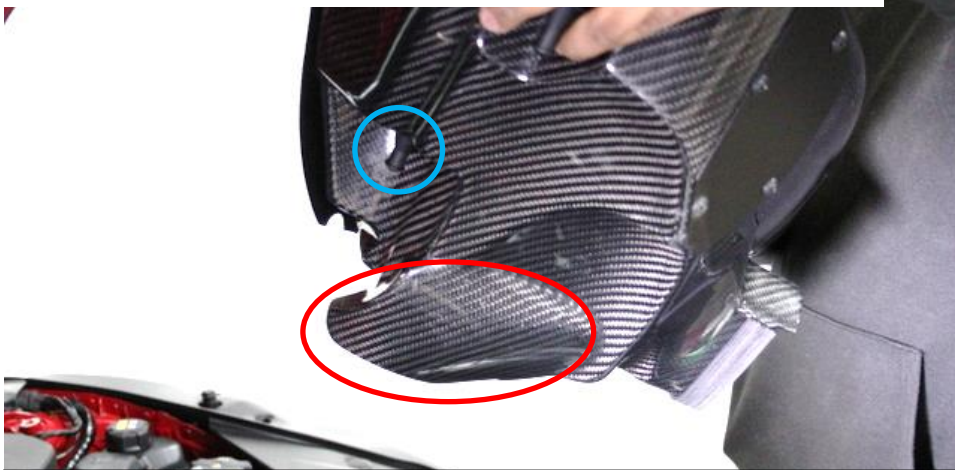
10. Push the sealing plate onto the tube. Now push the filter fully onto the tube and secure with the attached clamp.



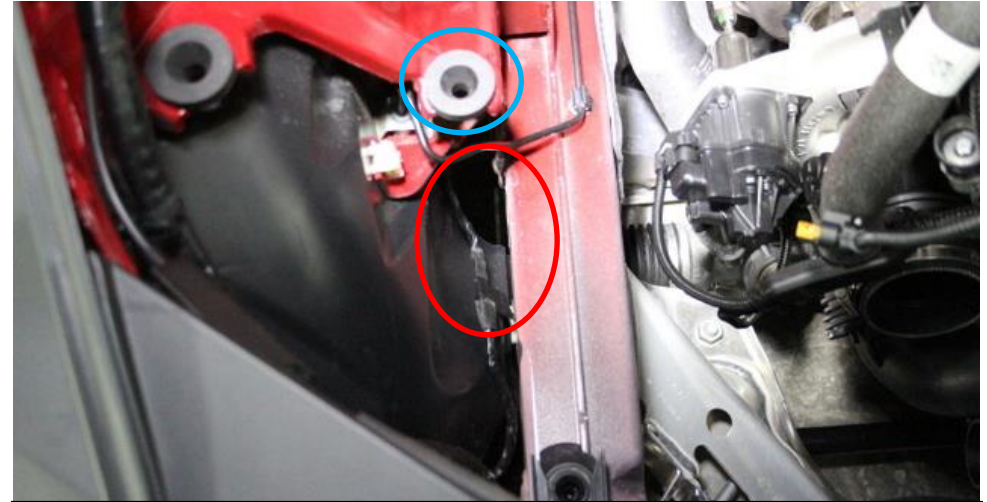
11. Insert the filter into the airbox and line up the holes on the sealing plate. Secure with the supplied M5 screws and lock washers.



12. Install the temperature sensor onto the tube using the supplied screws. DO NOT use the stock screws.



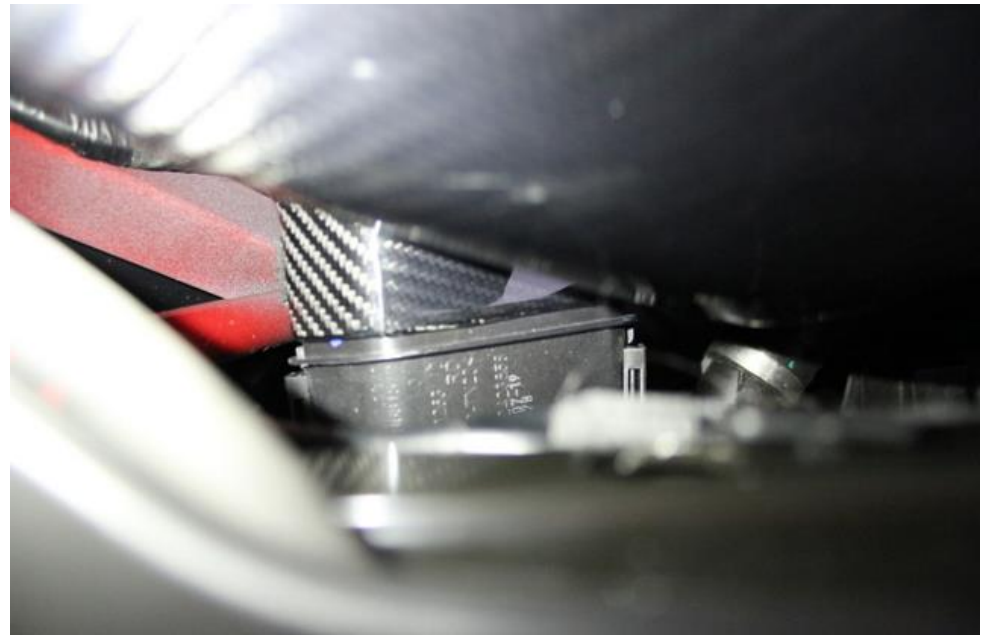
13. Carefully lower the airbox into the engine bay. Note that the secondary scoop circled above goes into the gap shown in the next photo. Also the mount circled blue should sit in the rubber mount shown in next photo.



14. Gap in the wheel arch area and rubber mount.



15. The main opening of the airbox should sit inside the stock duct – next photo.



16. Ensure the opening sits squarely on the stock duct.



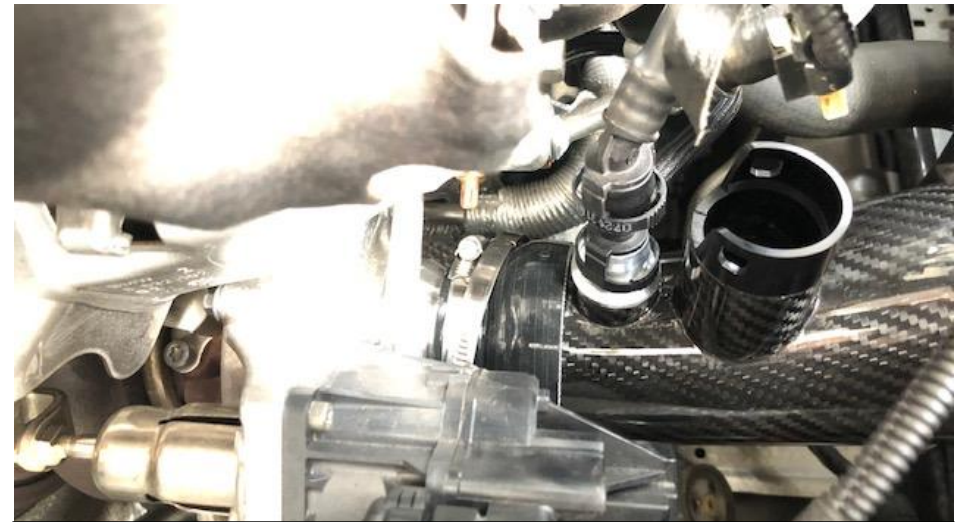
17. Carefully lower the airbox - will be easier without the engine cover in place.



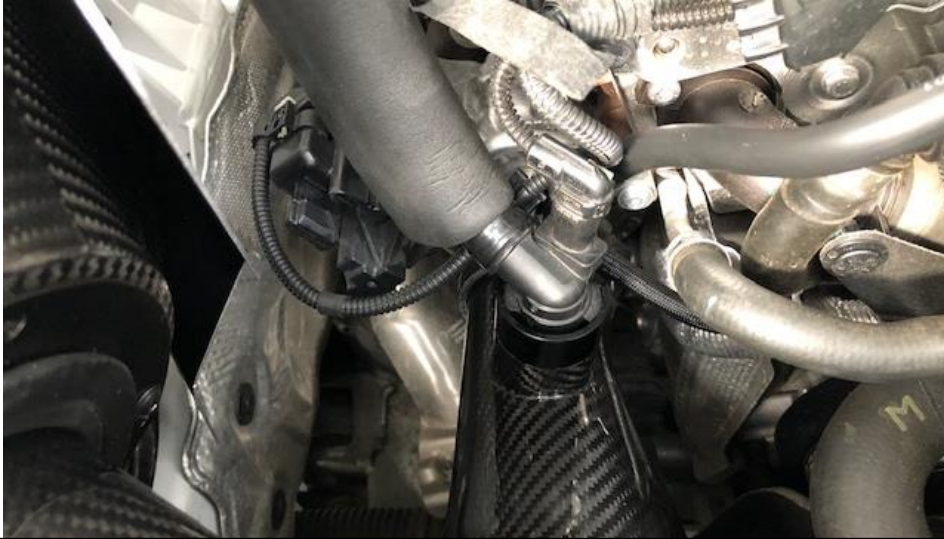
18. Bring it down at a slight angle with the front duct to locate the mounts and the secondary scoop as above.



19. Locate it into the 2 mounts and press firmly into place.



20. Insert the tube into the silicon and connect the breather plug. Now secure the remaining hose clamp around the carbon tube. **DO NOT OVERTIGHTEN.**



21. Push the larger ventilation tube into place ensuring the side tabs click into the holes. Also push the sensor plug back in.



22. Connect the sensor plug on the intake pipe.



**You have now completed the installation of the Eventuri G20 B48.**

Eventuri cannot take responsibility for an incorrectly installed intake or any damage caused during installation.

Installation is now complete.