



EXPLODED VIEW



Injen EVO5003 intake system *not included in kit*. Shown only for illustrative purposes only.

ASSEMBLED VIEW



CAUTION: Injen Technology **HIGHLY RECOMMENDS THIS INTAKE SCOOP BE INSTALLED BY A TRAINED PROFESSIONAL.** This kit does require cutting, drilling and grinding of the factory hood. Improper installation could result in damage to body panels and components.

WARNING: FAILURE TO FOLLOW INSTALLATION INSTRUCTIONS AND NOT USING THE PROVIDED HARDWARE MAY DAMAGE THE INTAKE SYSTEM, ENGINE AND COMPONENTS!!!

***Do not attempt to install the intake system while the engine is hot.**
Severe burn could result from touching hot engine components!

Report any defective or missing parts to the authorized Injen dealer you purchased this product from. Before installing any parts of this system, please read the instructions thoroughly. If you have any questions regarding installation, please contact your Injen Technology dealer. Installation DOES require some mechanical skills. A qualified mechanic is always recommended.

A Limited Lifetime Warranty to the original purchaser against defects in material and workmanship on all Injen intake systems excluding the filter element. Any and all warranty coverage is limited to the repair or replacement of the defective part only, at Injen Technology's discretion. The warranty does not cover incidental or consequential damages, nor does it cover the cost of installation or removal of the defective part or its replacement. Proof of purchase is required.

Vehicle Application:
Make: **Jeep**
Model: **Wrangler (JK)**
Year: **2012-2015**
Engine: **3.6L V6**

NOTE:
This optional Injen Intake scoop is an accessory to Injen Part# EVO5003. The Injen intake part# EVO5003 is not included in this kit. It is available separately. *This Scoop will only work with Jeep Wrangler JK Injen intake system part # EVO5003.* Injen does not recommend modifying or altering this scoop to make it fit other applications.

Item	QTY.	P/N	Discription
A	1	#15069	Jeep JK Ram air scoop
B	1	#11115	SS Mesh screen Plate
C	4	#6100	M6x20mm phillips bolts
D	4	#8047	Washers
E	4	#6047	M4X10 button head screws
F	1	#6101	Vinyl Trim 16" Long

TOOLS REQUIRED

- 8mm nut drive
- Allen key
- Flat Blade Screwdriver
- Phillips Screwdriver
- 1.75" Hole saw
- Drill
- Air saw

Instruction Manual P/N:EVO15069



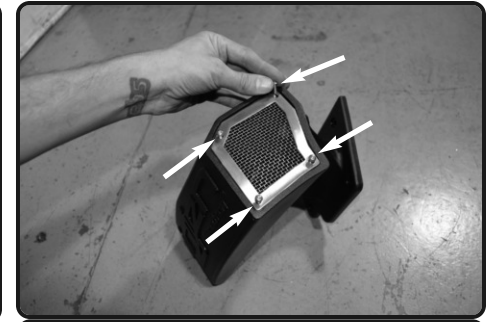
1. Injen EVO5003 intake shown.



2. Loosen the clamp on the 4.0" hump hose and remove the Injen intake box from the engine bay.



3. Use an allen wrench and remove the Air Box Shield Air Director from the Injen air box. This shield will no longer be used when installing the Injen EVO15069 Scoop



4. Place the stainless mesh screen plate onto the flange of the Injen air scoop. Use 4-M4X10 bolts to secure the screen to the air scoop.



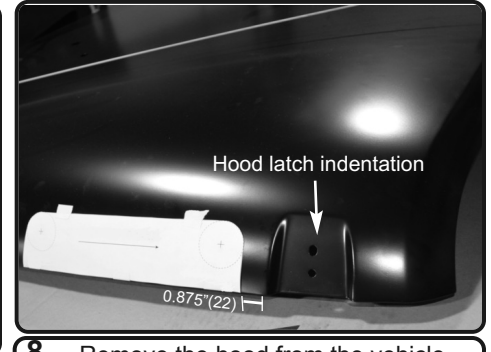
5. Place the Injen air scoop into the opening on the Injen air box and use 4-M6X20 bolts to secure the scoop to the Injen air box with a phillips screw driver.



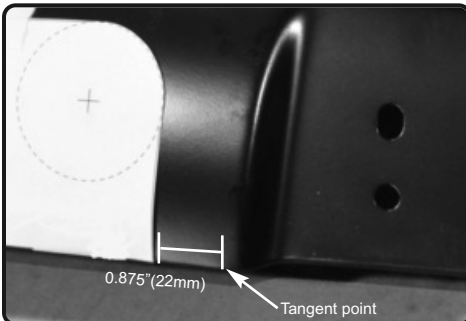
6. Once the Injen air scoop is assembled onto the Injen air box, re-installed the Injen air box and re-connect the intake tube and 4.0" hump hose from figure 2



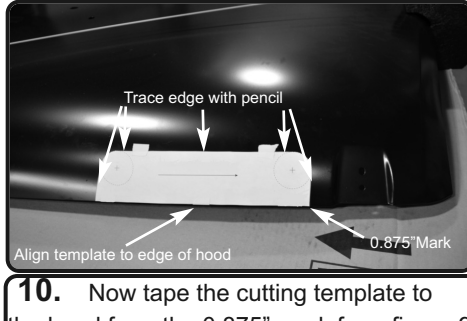
7. Injen intake system and air scoop installed.



8. Remove the hood from the vehicle. Measure 0.875" (22mm) from the hood latch indentation outer tangent point. Tape the cut template onto the hood. Figure 9 will have a close up of the measuring point



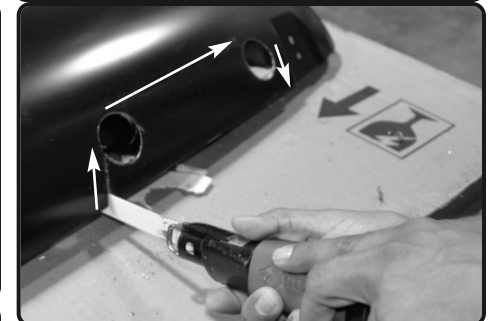
9. Locate the hood latch indentation outer tangent point and measure 0.875" left of tangent to locate supplied cutting template.



10. Now tape the cutting template to the hood from the 0.875" mark from figure 9 and make sure you line up the bottom of the cutting template to the edge of the hood. Use a pencil and trace the edge of the template for a cutting guide for the next step.



11. Using the crosshairs on the cutting template as a guide, use a 1 3/4" hole saw and drill out the two holes on the template. Make sure you drill past the second layer of the hood. **Please use caution!!!**



12. The line drawn from the template in figure 10 will be a guide to cut using an air saw to cut a straight line. **Please use caution and cut slow!!!**



13. This is what it will look like once you have made your cuts with the air saw



14. Use a flat grinder to straighten the edges and clean up all the metal burrs. Slowly grind back on the open. Only grind what you need for additional clearance. ***Please use caution and have proper safety equipment like goggles and air respirator!!!***



15. Re-install the hood. The cutout should look like this.



16. Place the vinyl trim onto the edge of the cut out.



17. Close the hood and make sure the cut out clears the scoop, grind back some more if more clearance is desired.

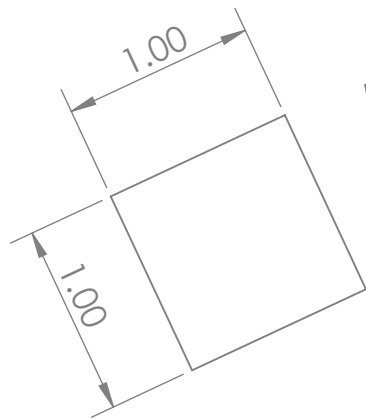
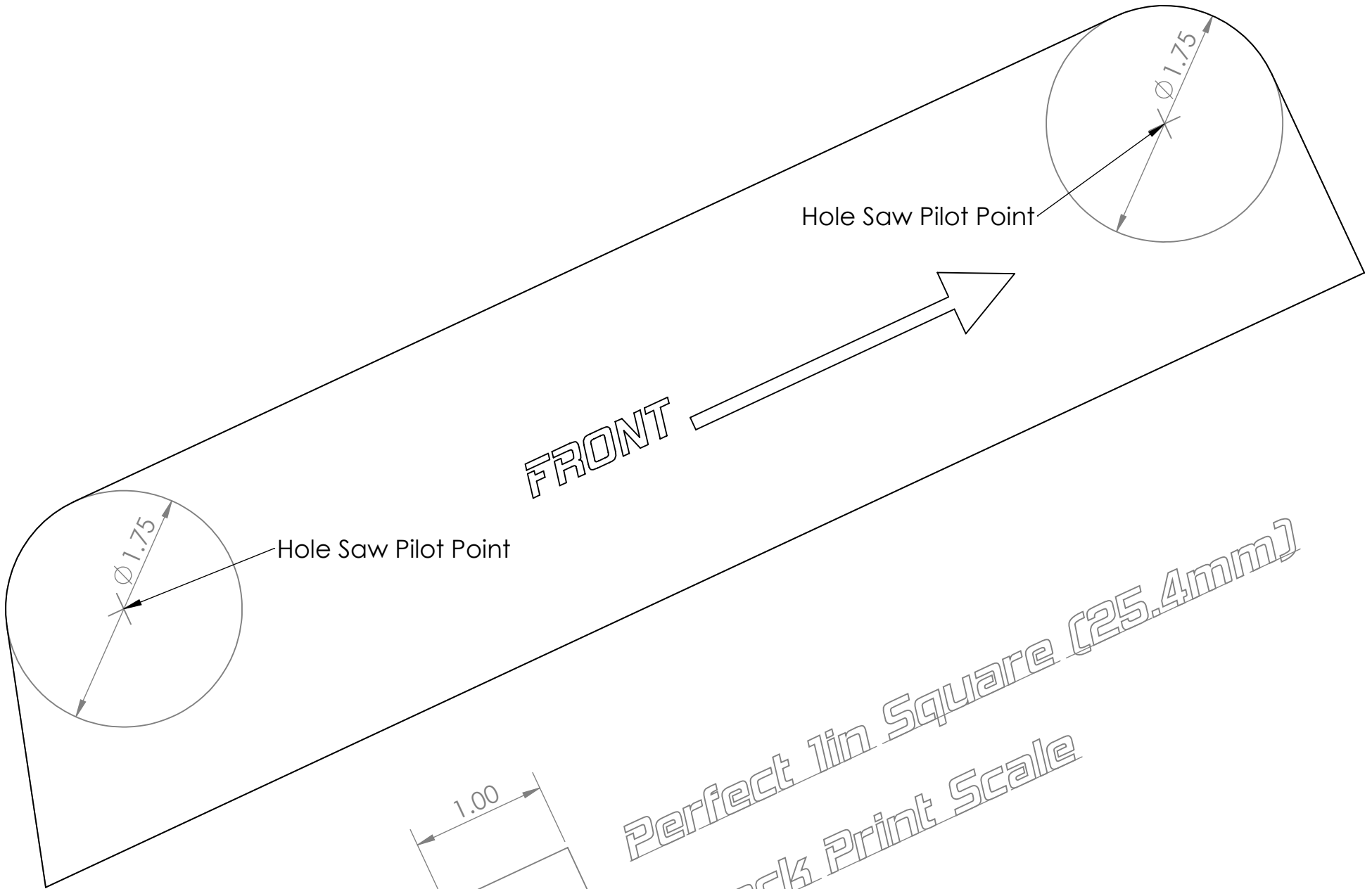
Congratulations! You have just completed the installation of this intake system. Periodically, check the alignment of the intake, normal wear and tear can cause nuts and bolts to come loose. Note: Check clearance and adjust if needed! Failure to check the alignment and adjust the intake can cause damage that will void the warranty. Injen Technology is not responsible for any damages caused by/from improper installation.

Test Drive:

1. With the transmission in neutral or park and the parking brake engaged, start the engine. Listen for air leaks or odd noises. If air leaks are detected, secure hoses and connections. For any odd noises, inspect entire system for cause and adjust intake as needed. The Injen intake will function identically to the factory system but will be louder and more powerful.
2. Perform a road test. Listen for odd noises or rattles and fix as necessary.
3. If there are no issues, continue to enjoy your added performance from the Injen performance Intake kit.
4. Injen Technology recommends you periodically check clearance and adjust if needed! Failure to check the alignment and adjust the intake can cause damage that will void the warranty. Injen Technology is not responsible for any damages caused by/from improper installation.

1. Upon completion of the installation, reconnect the negative battery terminal before you start the engine.
2. Align the entire intake system for the best possible fit. Once the intake has been properly fitted continue to tighten all nuts, bolts and clamps.
3. Periodically, recheck the alignment of the intake system and make sure there is proper clearance around and along the length of the intake. Failure to follow proper maintenance procedures may cause damage to the intake and will void the warranty.
4. Start the engine and listen carefully for any odd noises, rattles and/or air leaks prior to taking it for a test drive. If any problems arise go back and check the vacuum lines, hoses and clamps that maybe causing leaks or rattles and correct the problem.
5. Check the filter for excessive dirt build up. Clean or replace the filter with an original Injen filter (can be bought on-line at "injenonline.com"). Congratulations! You have just completed the installation of the best intake system sold on the market. Enjoy the added power and performance of your new intake system.

Page left blank intentionally



Perfect 1in Square (25.4mm)
Check Print Scale