



**F3X 440/340 REAR EXHAUST**  
(Install time 1.5 hour)



**NOTE:**

Factory rear exhaust will have to be cut in order to install new AA exhaust.



To remove factory exhaust the pipe will have to be cut.

**Tools:**

- Sawzall or Die grinder
- 10mm wrench
- 15mm socket
- Pry bar
- Tape measure

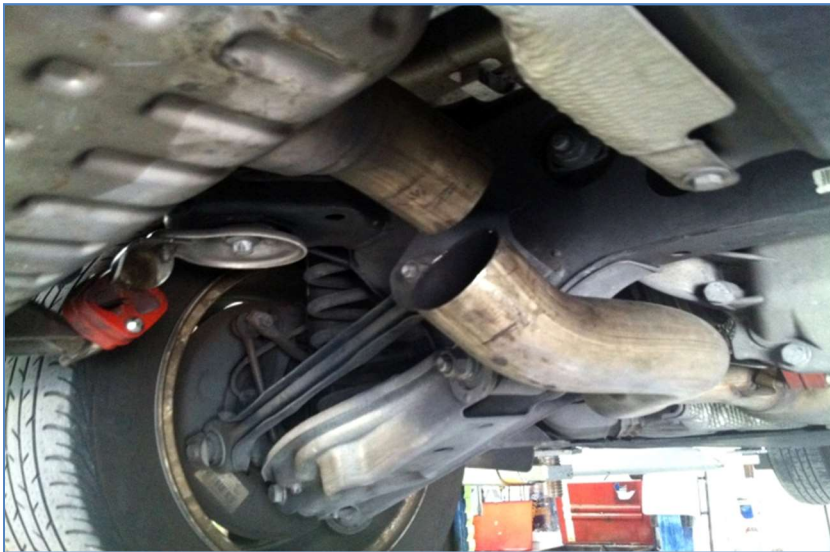


Measure 10.5 inches/266 mm from back of the muffler pan by weld mark. (Bottom of pipe follow curve)

Cut with Saw or die grinder.



Remove solenoid valve



With pipe separated slide muffler out of the Red (or black) rubber hangers.

De bur end of pipe that remains on the car.



Mount and set hangers – left DRIVER's side.

Reinstall solenoid switch.

**Note:** this will still operate but will not be attached to anything.





Repeat for right  
PASSENGER  
side.



Position  
muffler, install  
TORCA Clamp  
and tighten.

**Note:** Bolt at  
top



Install exhaust tips and adjust side spacing to opening.



Side view of tip installed.



Under carriage  
view of exhaust  
installed.