

IMF112



2024+ Tesla Cybertruck Mud Flap Installation Instructions









Manufacturer warranty covers material defects on new, never installed parts. Once installed, all mud flap replacement part costs are the responsibility of the vehicle owner. Caution against blind spots during parking. Avoid curbs and excessive compression to the flaps. Check stock and aftermarket wheel/suspension clearances.

INSTALLATION QUESTION? FOR REPLACEMENT PART QUOTES, SEND FLAP RECEIPT OR PHOTO → www.rallyarmor.com/support

Recommended Tools Low-profile offset, ratcheting, flat & Phillips screwdrivers, pick.

ONLY install on even surface using hand tools, not powered tools. AVOID OVERTIGHTENING HARDWARE.

ABOUT OUR STANDARD IN MUD FLAPS Polyurethane is a high grade plastic that may feature minor surface layer marks. These are visual variations that don't affect flap construction or performance. Most matte away as the material ages naturally.

MF112 KIT CONTENTS CONFIRM ALL PARTS AND QUANTITIES BEFORE INSTALLATION			
MUD FLAP KIT PN MF112	<i>SEE PAGE 3 DRAWINGS</i>	PART DESCRIPTION	QUANTITY
MF112-LF		LEFT FRONT	1
MF112-RF		RIGHT FRONT	1
MF112-LR		LEFT REAR	1
MF112-RR		RIGHT REAR	1
BRACKET KIT PN BMF112			
BMF112-FRT		BRACKET FRONT	2
BMF112-RE		BRACKET REAR	2
HARDWARE KIT PN HMF112			
1.5SS6TR		LONG SCREW	2
1SS#8		SCREW	10
SMWASH		WASHER	12
EXPANCH		EXPANSION ANCHOR	12

2024+ Tesla Cybertruck Mud Flap Installation Instructions

FRONT FLAP To access interior wheel well, turn steering wheel towards installation side.

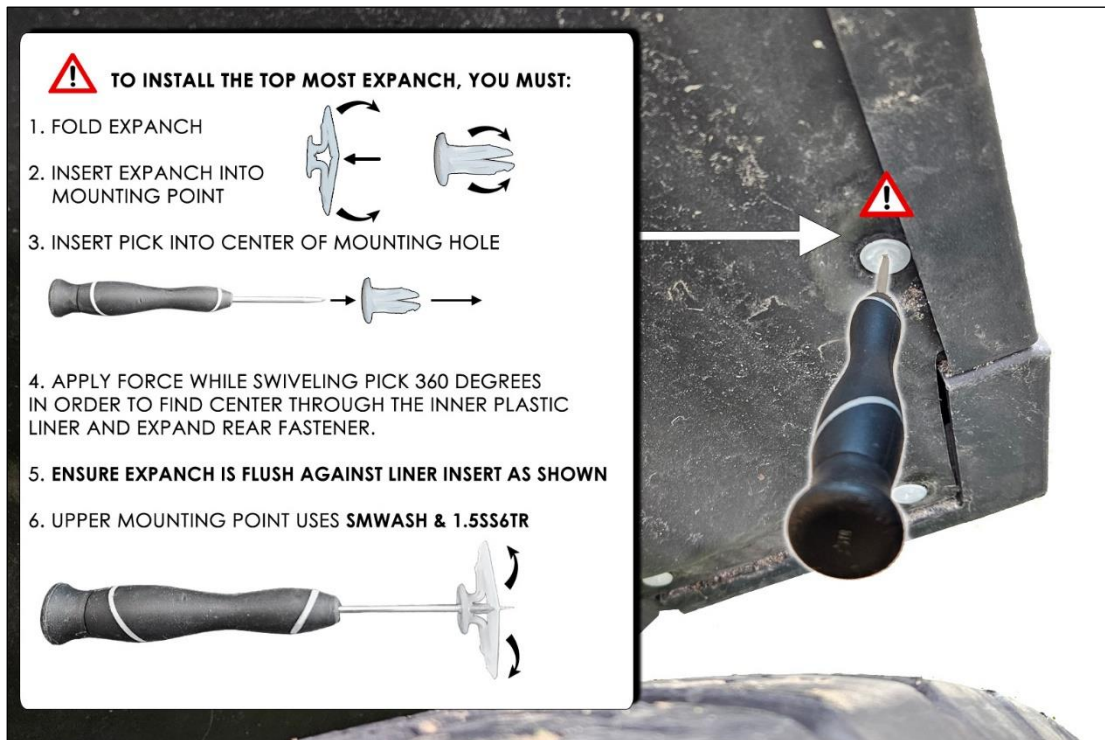
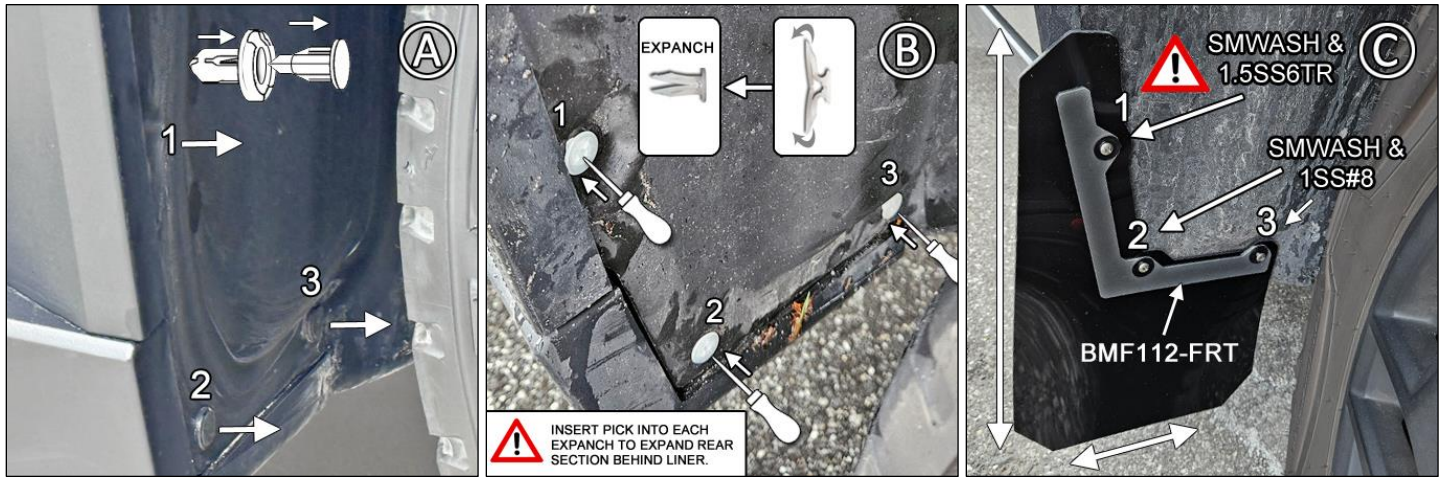
Do not fully tighten fasteners until flap is fully aligned to vehicle.

Bracket/Hardware 1 x Flap → 1 x BMF112-FRT; 1 x 1.5SS6TR; 2 x 1SS#8; 3 x EXPANCH; 3 x SMWASH

FIGURE A Remove fasteners 1 - 3.

FIGURE B Fold EXPANCH, then install into mounts 1 - 3. Use a pick to open hole of EXPANCH by inserting 1" into its center.

FIGURE C Place logo-side of flap facing vehicle rear and BMF112-FRT over flap. Install SMWASH & 1.5SS6TR into mount 1. Install SMWASH & 1SS#8 into mounts 2 & 3. Align flaps to even ground. Tighten fasteners until washers are just seated against flap.



2024+ Tesla Cybertruck Mud Flap Installation Instructions

REAR FLAP Do not fully tighten fasteners until flap is fully aligned to vehicle.

Bracket/Hardware 1 x Flap → 1 x BMF112-RE; 3 x 1SS#8; 3 x EXPANCH; 3 x SMWASH

FIGURE D Remove fasteners 1 - 3.

FIGURE E Fold EXPANCH, then install into mounts 1 - 3. Use a pick to open hole of EXPANCH by inserting 1" into its center.

FIGURE F Place logo-side of flap facing vehicle rear and BMF112-RE over flap. Install SMWASH & 1SS#8 into mounts 1 - 3. Align flaps to even ground. Tighten fasteners until washers are just seated against flap.

