

2016+ Civic/Si Mud Flap Installation Instructions

View instructions and photos online www.rallyarmor.com

CARE AFTER INSTALLATION Once installed, the vehicle owner is responsible for the condition of the mud flaps and all costs associated with replacing damaged or lost parts. Warranty covers manufacturer defect on new, never installed parts.

⚠ Watch for blind spots when parking ⚠ Avoid contact with curbs, bumps and objects that can compress the flaps with excessive force. Be sure to check wheel clearances, especially on vehicles equipped with aftermarket wheels and suspensions.

QUESTION ON INSTALLATION? CONTACT US ONLINE www.rallyarmor.com/support

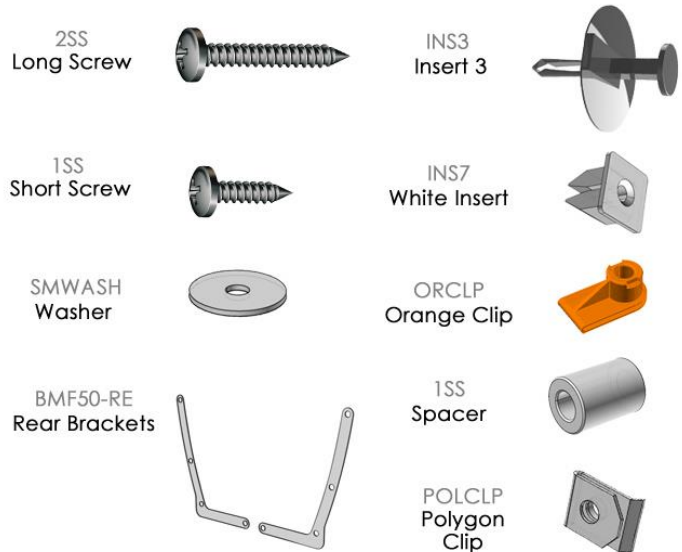
NEED TO PURCHASE REPLACEMENT PARTS? SEND RECEIPT OR PHOTO OF RALLY ARMOR LOGO ON FLAPS TO US www.rallyarmor.com/support

IMPORTANT NOTES

INSTALLATION KIT CONTENTS



QUANTITY	PART	ITEM ID
2	Plastic Spacer	1SP
6	Short Stainless Steel Screw	1SS
2	Long Stainless Steel Screw	2SS
2	Rear Bracket	BMF50-RE
2	Insert 3	INS3
2	White Insert	INS7
2	Orange Clip	ORCLP
4	Polygon Clip	POLCLP
16	Small Washer	SMWASH



Recommended Tools Low Profile Offset or Ratcheting Screwdriver; 7/16th Wrench; Panel Removal Tool; Pick.

Important Tips Installation should be done on an even surface. Use hand not power tools to tighten hardware. **Avoid overtightening.**

RALLY ARMOR - A BIT ABOUT OUR STANDARD IN MUD FLAPS

Rally Armor mud flaps are fabricated from a high grade polyurethane plastic that is rigorously reviewed for quality and consistency. As with all manufacturing processes, controlled conditions and multiple QC checkpoints minimize major irregularities, however certain very minor surface layer marks appear periodically. These are visual variations that do not affect construction nor do they impede the performance of the flaps. Most matte away as the material ages naturally with continued exposure to the outdoors. Each flap is unique in appearance yet all are equally structurally sound.

2016+ Civic/Si Mud Flap Installation Instructions

FRONT MUD FLAP INSTALLATION

Always Avoid Overtightening Hardware. Fully tighten all mounts after final step as shown in Figure F.

Hardware for 1 Front Flap → Original OEM Fasteners; 1 x 1SP; 1 X 1SS; 1 x 2SS; 1 x INS3; 1 x INS7; 1 x ORCLP; 4 x SMWASH

Turn the steering wheel towards the side you are working on to gain access to the inner wheel well area.

FIGURE A - A1 Use a pick to press inner pin of the retainer. Remove the outer retainer with panel removal tool. **A2-A3** Unscrew, remove and set aside OEM retainer screws 2 and 3 for reinstallation later. **A4** Remove inner fender liner fastener.

FIGURE B Pull liner away then install White Insert INS7 in the upper square mounting point. For mount #3, remove existing OEM original clip and replace with Orange Clip ORCLP. Make sure the Orange Clip does not shift while re-installing liner.

FIGURE C Remove and discard the male pin from the base of Insert 3 INS3. Place Long Stainless Steel Screw 2SS into Small Washer SMWASH through innermost mounting point of mud flap into Spacer 1SP and Insert 3.



FIGURE D Insert 3 INS3 assembly goes into mounting point 4, firmly seated against the liner. Hold female base of insert securely against liner to prevent it from spinning. Continue threading the Long Stainless Steel Screw 2SS, keeping Insert 3 seated against liner during this process. Tighten until Small Washer is *almost* seated against the flap.

FIGURE E Position the mud flap against the corresponding mounting points on the liner. Place OEM screws through Small Washers for mounting points 1 & 2. Mount Short Stainless Steel Screw, Small Washer into point 3.

FIGURE F Align the outer edge of the flap by making slight angle adjustments. Walk away from the vehicle to confirm the flap is even with the ground then tighten all mounting screws until just seated against the mud flap.



2016+ Civic/Si Mud Flap Installation Instructions

REAR MUD FLAP INSTALLATION

Always Avoid Overtightening Hardware. Fully tighten all mounts after final step as shown in Figure L.

Bracket & Hardware for 1 Rear Flap → Original OEM Fasteners; 1 x BMF50-RE; 2 x 1SS; 2 x POLCLP; 4 x SMWASH

FIGURE G Applying gentle pressure, subtly curve the upper and lower portions of the Rear Bracket BMF50-RE following the lines of the wheel well and nesting the lower section back towards the liner.

FIGURE H Install 2 Polygon Clips POLCLP.

FIGURE I Remove rear OEM screws.

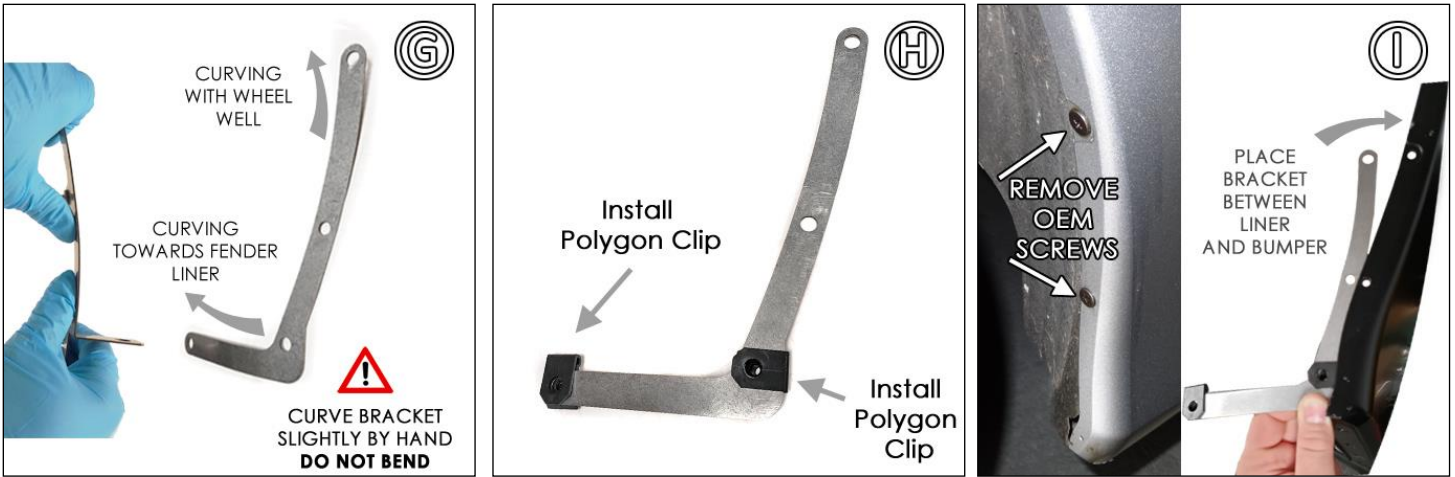


FIGURE J Install OEM screw and Small Washer through mud flap, bumper and mounting bracket 1 & 2. Install Short Screw 1SS in points 3 and 4. The lower section of the bracket should be parallel to the tire.

FIGURE K Working from the rear of the vehicle, position the fender liner so OEM screws catch mounting points 1 and 2.

FIGURE L Align the outer edge of the flap by making slight angle adjustments. Walk away from the vehicle to confirm the flap is even with the ground then tighten all mounting screws until just seated against the mud flap.



IMF50

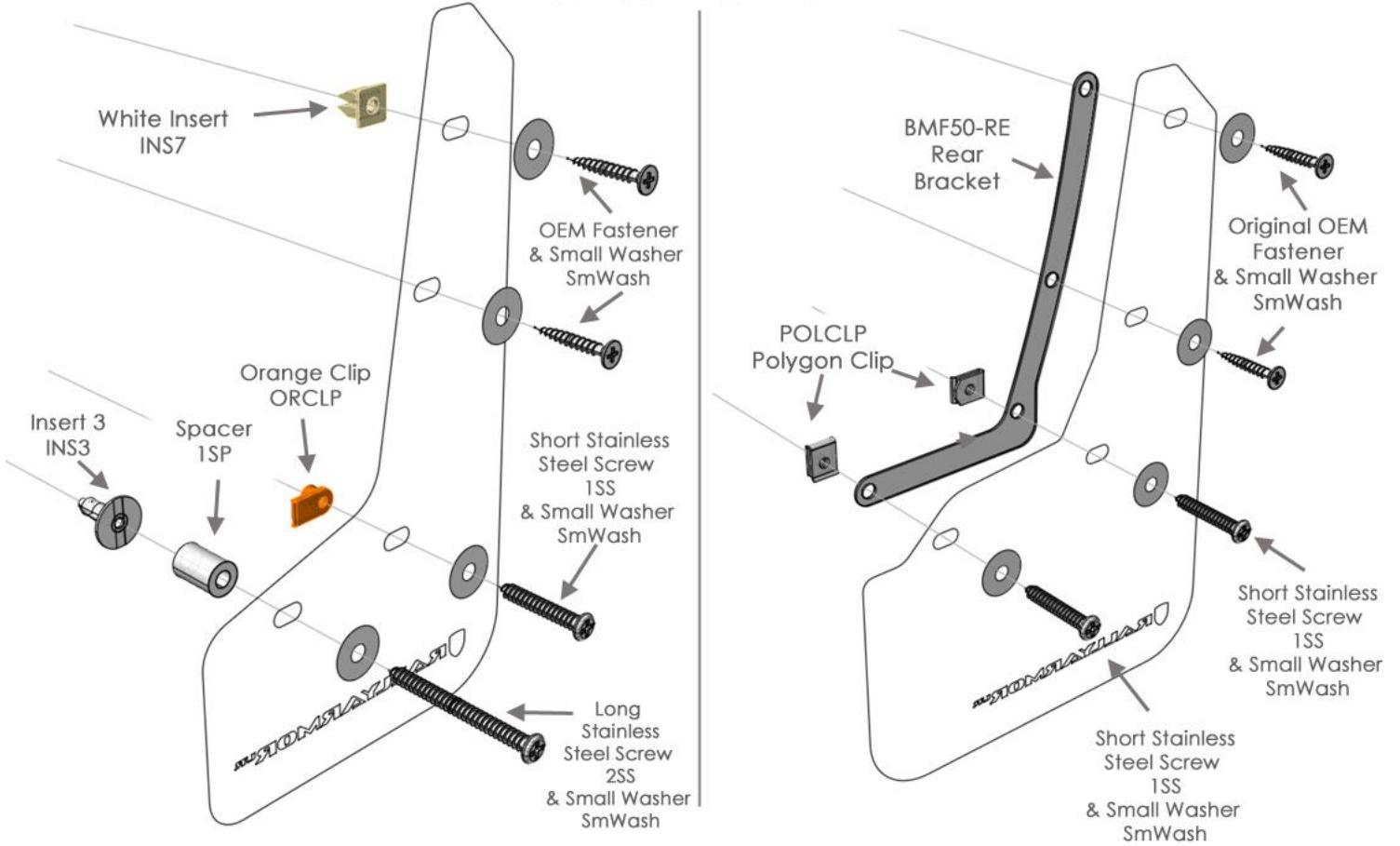


2016+ Civic/Si Mud Flap Installation Instructions



FRONT

REAR



Content and images are copyright of Rally Armor® LLC