

**2019+ Mazda3 GT Sport Hatch Mud Flap Installation Instructions**

View instructions and photos online [www.rallyarmor.com](http://www.rallyarmor.com)

**CARE AFTER INSTALLATION** Once installed, the vehicle owner is responsible for the condition of the mud flaps and all costs associated with replacing damaged or lost parts. Warranty covers manufacturer defect on new, never installed parts.

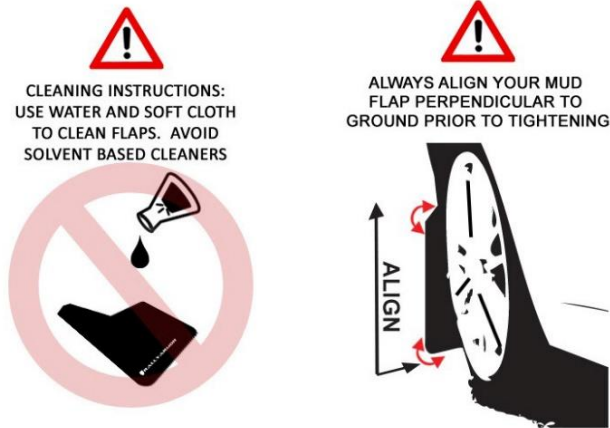
⚠ Watch for blind spots when parking ⚠ Avoid contact with curbs, bumps and objects that can compress the flaps with excessive force. Be sure to check wheel clearances, especially on vehicles equipped with aftermarket wheels and suspensions.

QUESTION ON INSTALLATION? CONTACT US ONLINE [www.rallyarmor.com/support](http://www.rallyarmor.com/support)

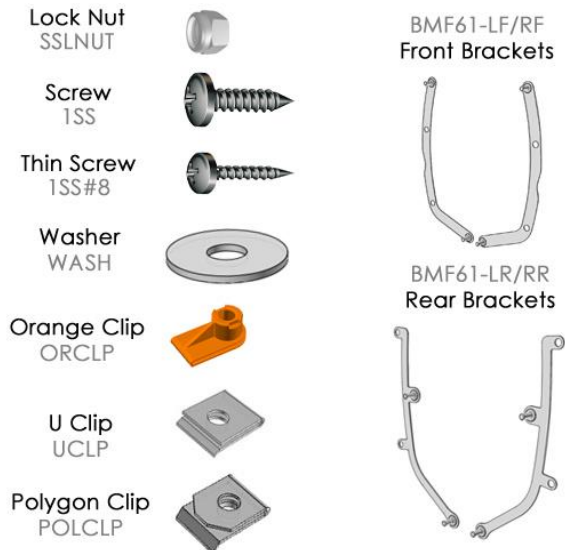
NEED TO PURCHASE REPLACEMENT PARTS? SEND RECEIPT OR PHOTO OF RALLY ARMOR LOGO ON FLAPS TO US [www.rallyarmor.com/support](http://www.rallyarmor.com/support)

**IMPORTANT NOTES**

**INSTALLATION KIT CONTENTS**



QUANTITY	PART	ITEM ID
8	LOCK NUT	SSLNUT
4	SCREW	1SS
4	THIN SCREW	1SS#8
16	WASHER	WASH
4	ORANGE CLIP	ORCLP
2	U CLIP	UCLP
2	POLYGON CLIP	POLCLP
1	MOUNTING BRACKET LEFT FRONT	BMF61-LF
1	MOUNTING BRACKET RIGHT FRONT	BMF61-RF
1	MOUNTING BRACKET LEFT REAR	BMF61-LR
1	MOUNTING BRACKET RIGHT REAR	BMF61-RR



**Recommended Tools** Offset or ratcheting screwdriver, 7/16<sup>th</sup> wrench, drill bit set, drill and marker.

**Important Tips** Installation should be done on an even surface. **Do not use power tools to tighten hardware.** Hand tools only. Avoid overtightening as flaps should be aligned prior to final tensioning.

**RALLY ARMOR - A BIT ABOUT OUR STANDARD IN MUD FLAPS**

Rally Armor mud flaps are fabricated from a high grade polyurethane plastic that is rigorously reviewed for quality and consistency. As with all manufacturing processes, controlled conditions and multiple QC checkpoints minimize major irregularities, however certain very minor surface layer

**2019+ Mazda3 GT Sport Hatch Mud Flap Installation Instructions**

marks appear periodically. These are visual variations that do not affect construction nor do they impede the performance of the flaps. Most matte away as the material ages naturally with continued exposure to the outdoors. Each flap is unique in appearance yet all are equally structurally sound.

**FRONT MUD FLAP**

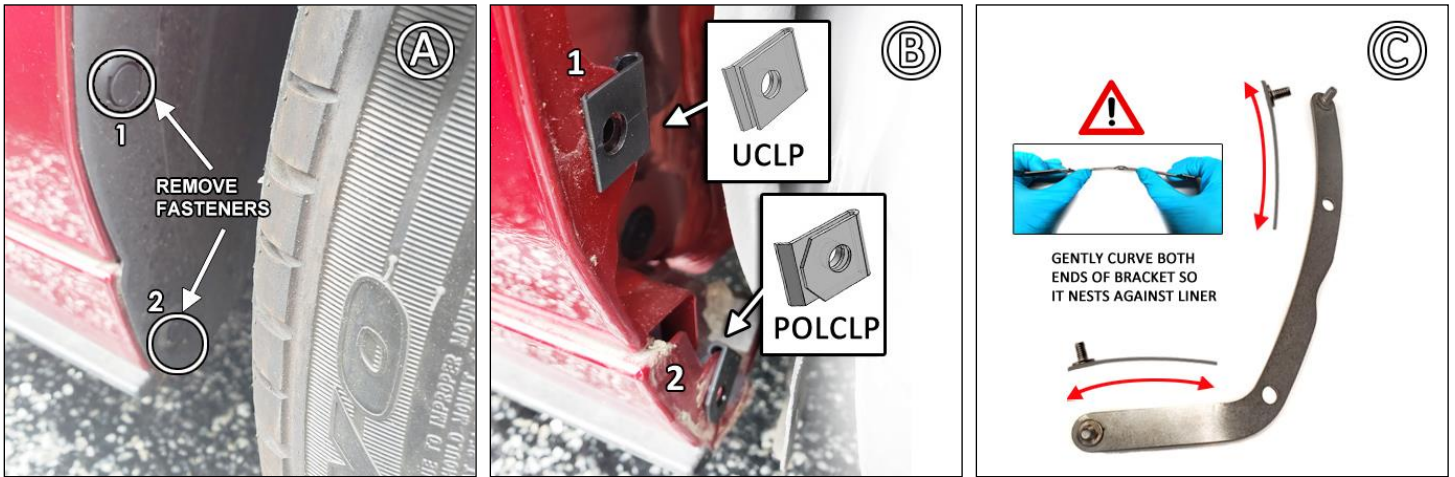
**Hardware & Bracket 1 x Front Flap → 1 x BMF61-LF/RF; 2 x 1SS; 2 x SSLNUT; 1 x UCLP; 1 x POLCLP; 4 x WASH**

Turn the steering wheel towards the side you are working on to gain access to the interior wheel well.

**FIGURE A** Remove both factory liner fasteners 1 & 2. Clean wheel well area then push liner aside.

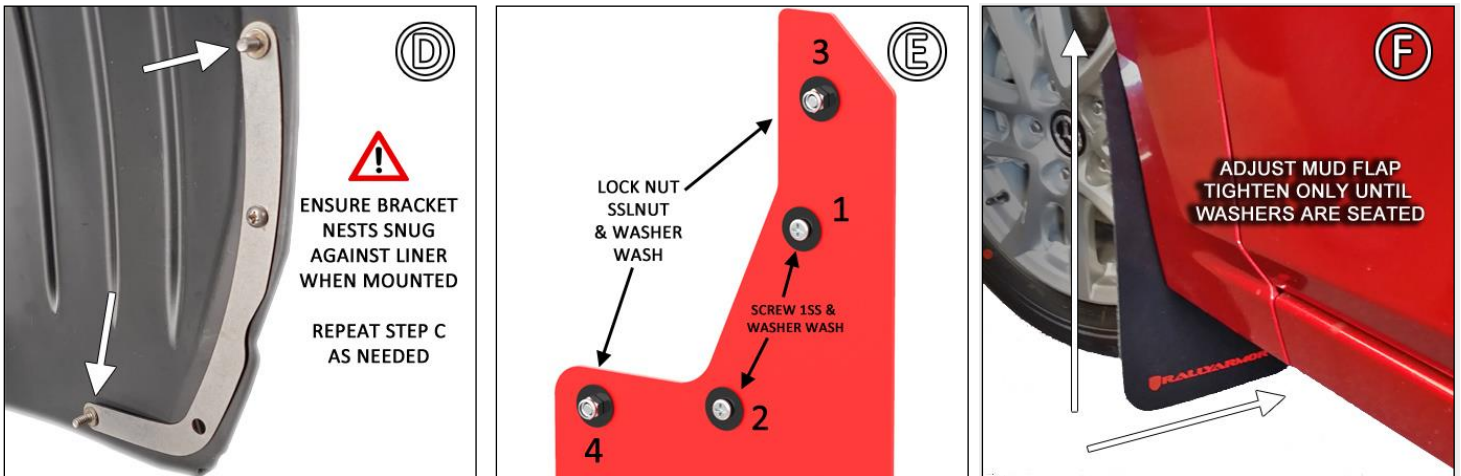
**FIGURE B** Install a U CLIP UCLP over mounting point 1. Install POLYGON CLIP POLCLP over mounting point 2. Reinstall liner.

**FIGURES C/D** Gently curve both ends of BMF61-LR/RR bracket so it nests snug against the liner.



**FIGURE E** Place mud flap logo-side to the rear of the vehicle against mounting points on the bracket and liner. Pair WASHERS WASH & SCREWS 1SS to fasten mounts 1 & 2. Use a WASHER WASH & LOCK NUT SSLNUT for points 3 & 4. Do not fully tighten.

**FIGURE F** Align outer edge of flap by making incremental adjustments then tighten SCREWS and LOCK NUTS until WASHERS are seated.



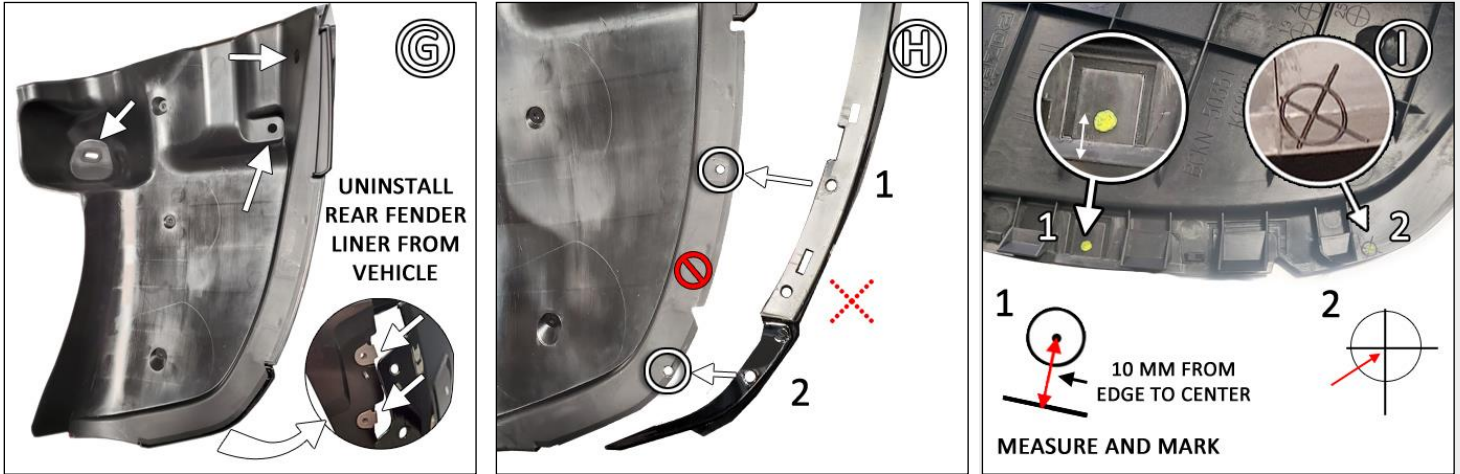
**REAR MUD FLAP**

**Hardware & Bracket for 1 x Rear Flap → 1 x BMF61-LR/RR; 2 x SSLNUT; 2 x 1SS#8; 2 x ORCLP; 4 x WASH**

**FIGURE G** Remove tire or jack the rear of the vehicle to lower tire and access wheel well area. Remove fasteners from the liner to completely uninstall it.

**2019+ Mazda3 GT Sport Hatch Mud Flap Installation Instructions**

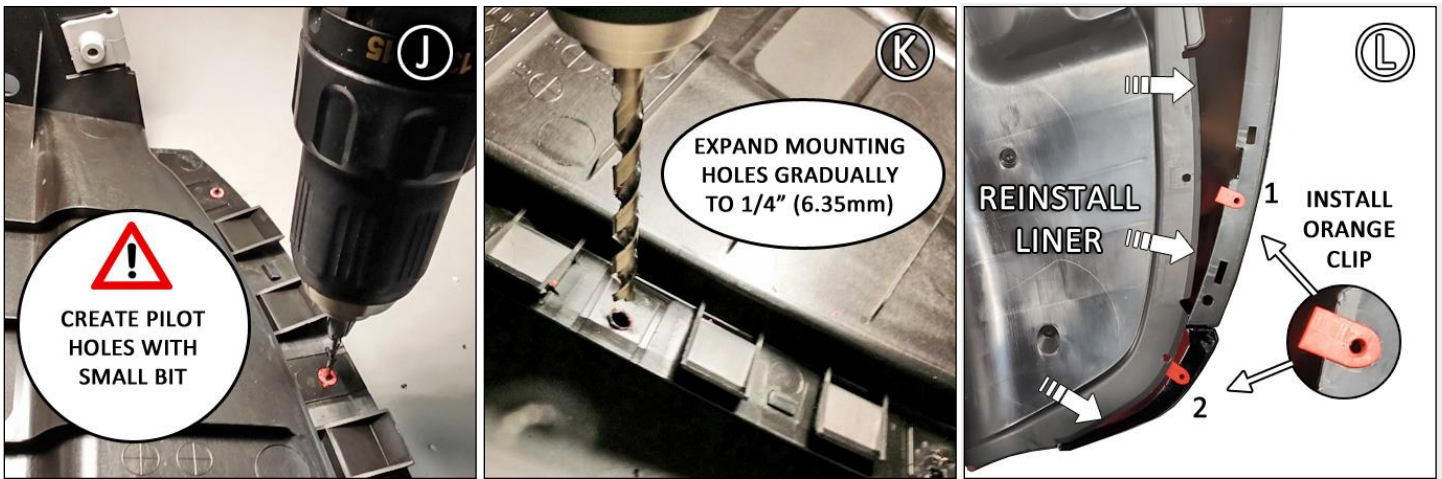
**FIGURES H/I** Locate the small holes on the liner. Mark the two mounting points as shown in images.



**FIGURE J** Using a small bit, drill a pilot hole in the center of the marks.

**FIGURE K** Gradually open the holes using larger bits until they reach 1/4" or 6.35 mm.

**FIGURE L** Place ORANGE CLIPS ORCLP over mounting points 1 & 2. Reinstall liner ensuring holes of CLIPS are visible through liner.



**FIGURE M** Gently curve bottom end of REAR MOUNTING BRACKET BMF61-LR/RR so it nests against the liner when mounted.

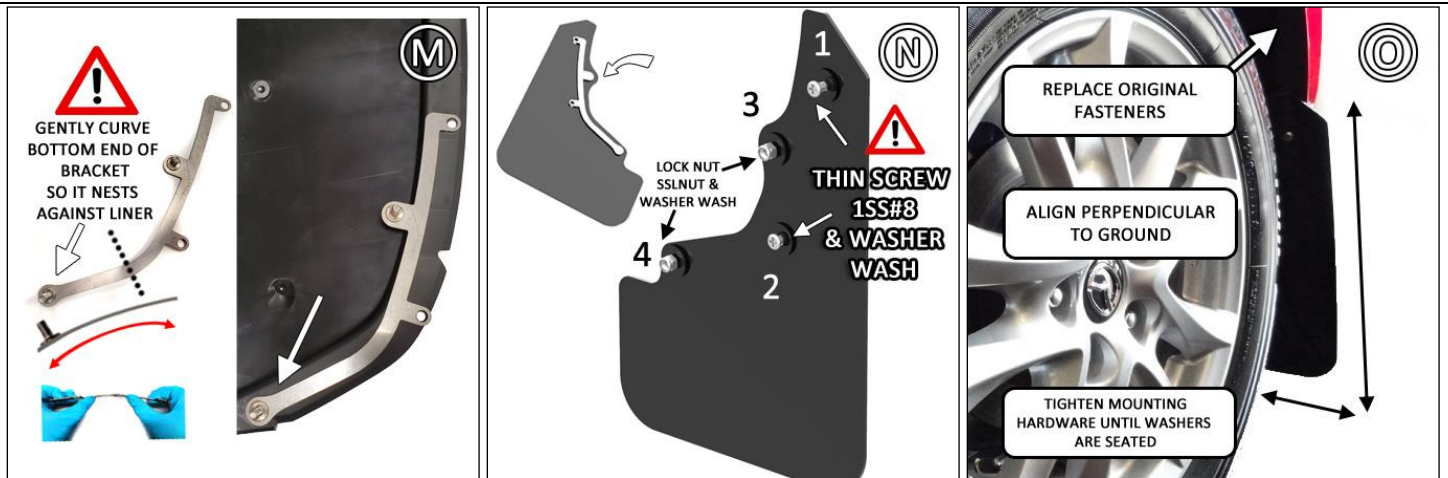
**FIGURE N** Position BRACKET on the logo-side of the flap, logo-side flap facing the rear of the vehicle against the corresponding mounting points. Use **THIN SCREW 1SS#8** and **WASHER WASH** for mounting points 1 & 2. Tighten until just flush. Install **LOCK NUT SSLNUT** and **WASHER** for mounting points 3 & 4.

**FIGURE O** Align outer edge of the flap by making slight adjustments until perpendicular to even ground. Tighten fasteners until **WASHERS** are seated against the flap.

# IMF61



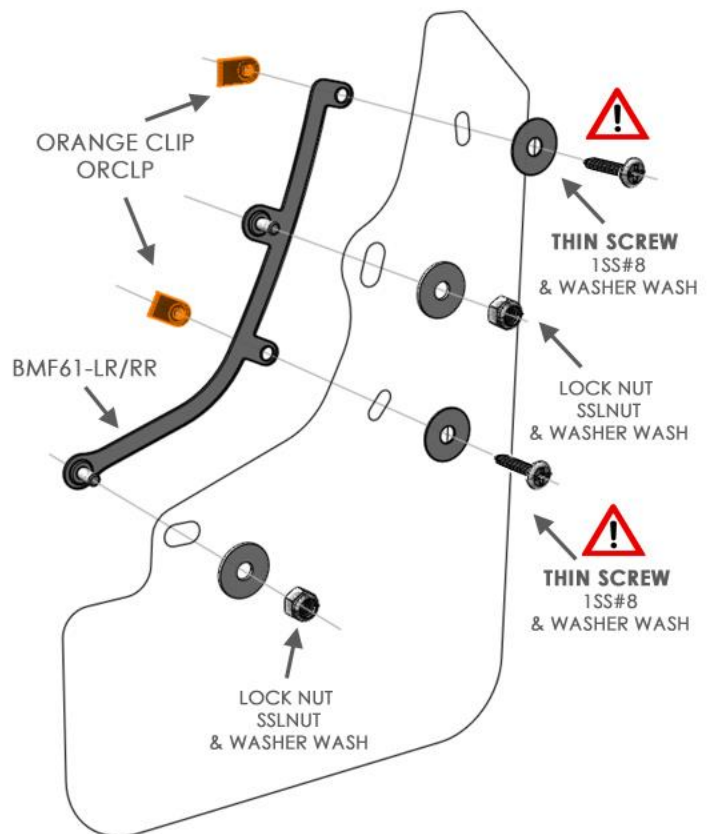
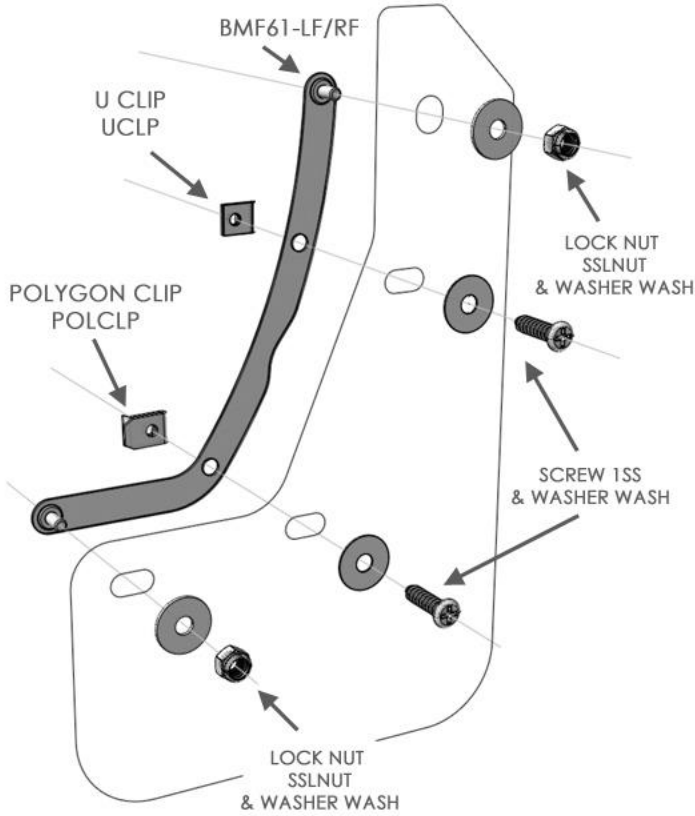
## 2019+ Mazda3 GT Sport Hatch Mud Flap Installation Instructions



FRONT



REAR



Content and images are copyright of Rally Armor® LLC