



**INFINITI Q50/Q60**

# **LOWER DOWNPIPE**

---

The Alpha Performance Q60 Red Alpha lower downpipes offer a more pronounced, throaty exhaust note under wide open throttle yet are subdued at idle and while cruising.

# Table of Contents

PAGE **03** Introduction

PAGE **04** Disassembly

PAGE **08** Assembly & Installation

# Introduction

The goal of Alpha Performance is to provide the highest quality, best performing products available. By utilizing research and development, and rigorous testing programs Alpha Performance will never compromise the quality or performance of our products. In addition, Alpha Performance will only provide the finest customer service offering only parts and advice that are in the best interests of the customer. Alpha Performance was built on a foundation of integrity. This is who we are; this is what you can count on.

A vehicle modified by the use of performance parts may not meet the legal requirements for use on public roads. Federal and state laws prohibit the removal, modification, or rendering inoperative of any part or element of design affecting emissions or safety on motor vehicles used for transporting persons or property on public streets or highways. Use or installation of performance parts may adversely affect the drivability and reliability of your vehicle, and may also affect or eliminate your insurance coverage, factory warranty, and/or new OEM part warranty. Performance parts are sold as-is without any warranty of any type. There is no warranty stated or implied due to the stresses placed on your vehicle by performance parts and our inability to monitor their use, tuning, or modification.

These instructions are provided as a guide only as there are many variables that cannot be accounted for concerning your particular vehicle, including but not limited to model year differences, model differences, the presence of non-OEM parts, and modifications that may already be or were previously installed. A basic knowledge of automotive parts and systems is helpful but a better understanding of the parts and systems on your particular vehicle may be required.

If you have any questions or issues at any time during the installation of your Alpha Performance product(s) please call us for technical assistance. The Alpha Performance tech line can be reached during business hours at 847-709-0530 for Alpha Performance products only.

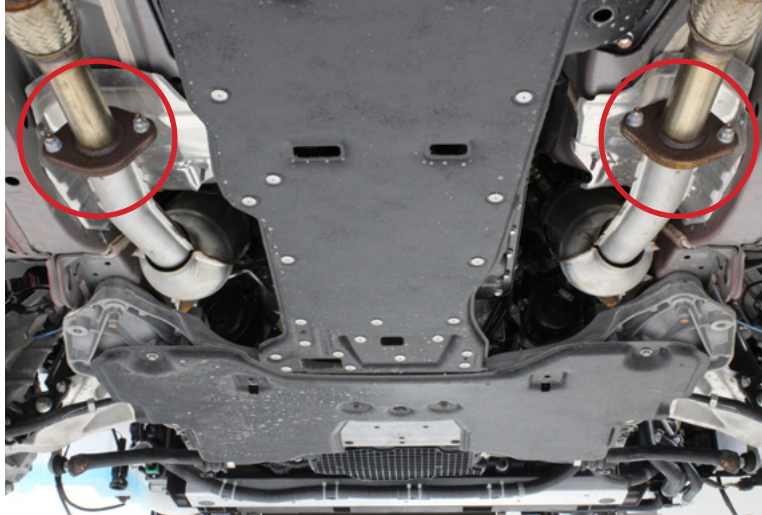




# Dissassembly

**NOTES:** Before beginning, please read step 5.

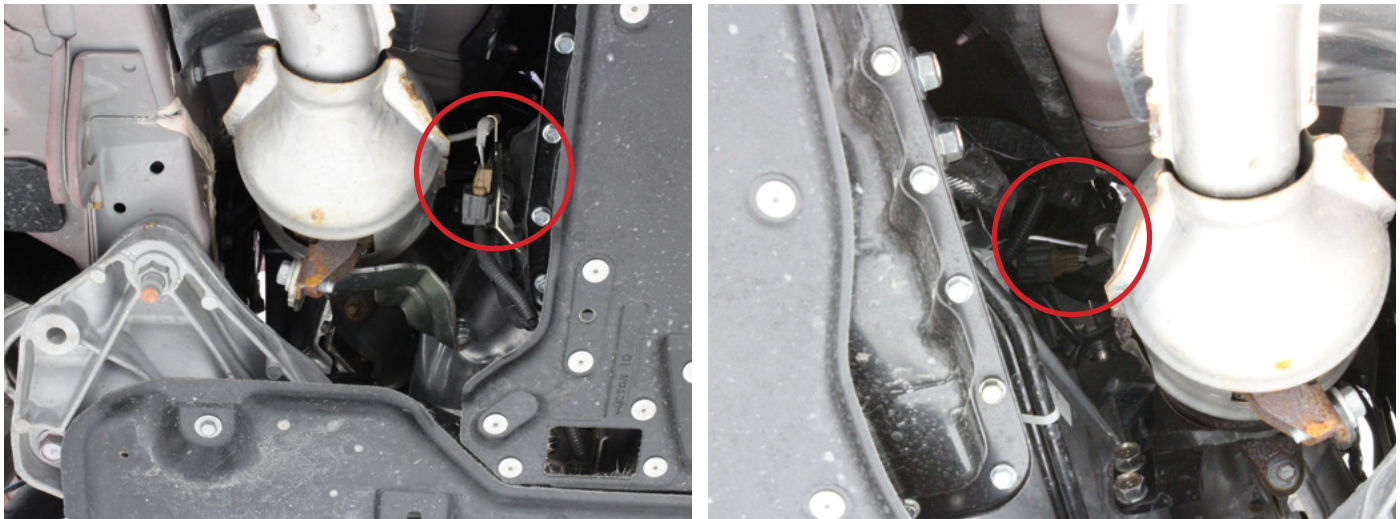
- 01. Raise the vehicle in a safe manner.
- 02. Remove the hardware connecting the exhaust to the lower downpipes.



- 03. Loosen, but do not completely remove the lower downpipe mounting bolts. These will be completely removed when the downpipe is fully unbolted. Leaving the bolt in place will support the downpipe when it is fully unbolted.



**04.** Disconnect the secondary O2 sensors. On the left side, the connector is located on the side of the transmission. On the right, it is located on the main engine harness just above the bell housing of the transmission. This connector is a little difficult to get to on AWD vehicles due to the forward shaft. You may need to completely unbolt the OEM downpipe first and move it to the side to gain access to the area. The picture below shows the connector on a RWD vehicle.

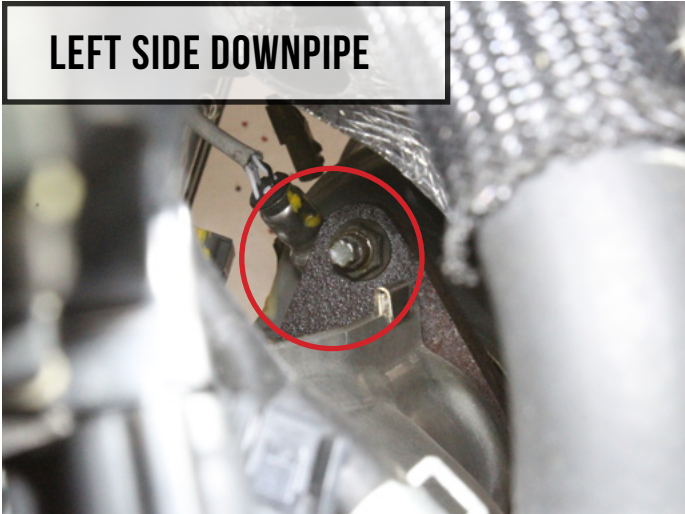
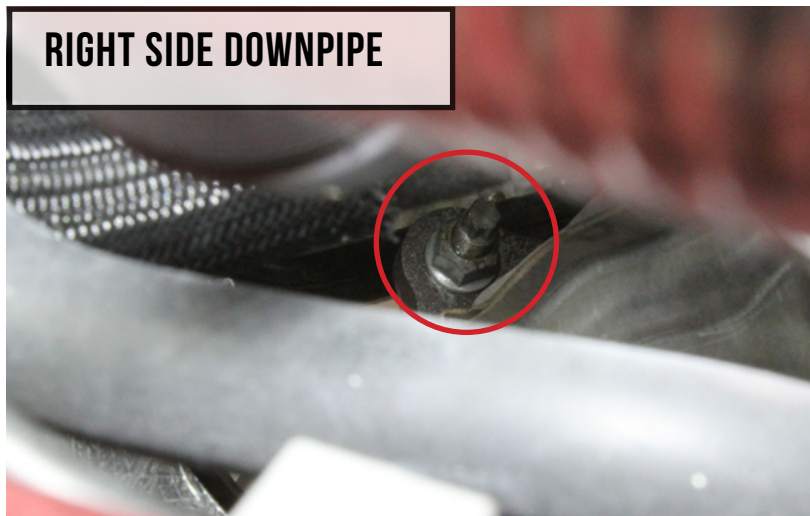


**05.** Next steps will be to disconnect the lower downpipe from the upper. The hardware used by Infiniti and Nissan can be a little troublesome. It is common for the nuts to seize on the studs and break at times. Below is some information and a tip on how to prevent this from happening. Remember, patience is key.

**a.** Cause – The nuts used are a type of lock nut called a distorted thread. It is where the top thread of the nut are crimped inwards. This created pressure on the stud's threads holding the nut in place. The issue is when you unscrew the nut off the stud, the distorted thread section creates a lot of heat due to friction. This will cause the nut to basically friction weld itself to the stud. This is where the stud breaks or the threads give out and it just spins. The stud material is also really soft and does not help the situation.

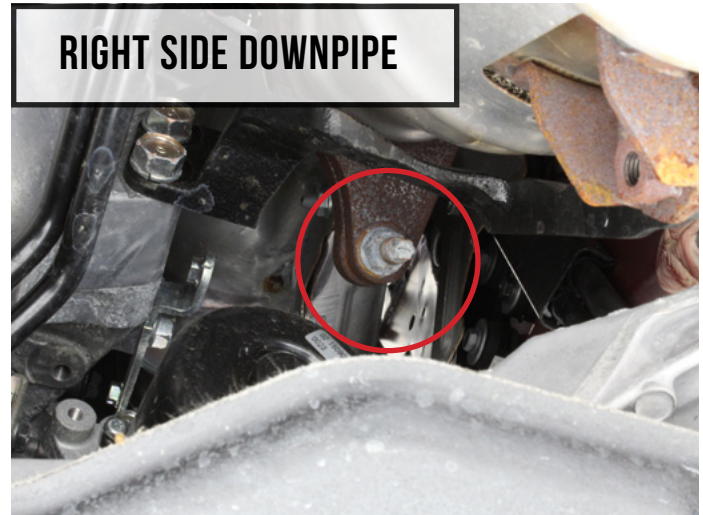
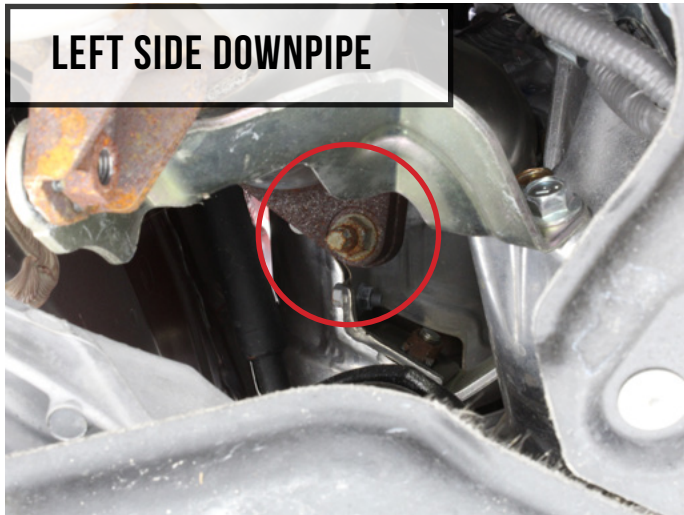
**b.** Prevention – This is where patience is key. First, use PB Blaster or similar rust penetrant on all the studs and nuts. Let this soak in and sit. Start to loosen one of the nuts but only move the nut a half or one full turn and move on to the next. Reapply rust penetrant if needed. Repeat this process until everything is completely unbolted. This process will help keep the nuts cool and prevent friction welding. It is not advised to use an impact gun as this will likely result in snapped studs. Only use hand tools to remove the nuts. This process has a very high success rate for removing difficult hardware such as this.

06. Start from the top of the engine bay. The downpipes have studs facing downwards and upwards into the engine bay. The right side downpipe has two studs facing upwards and one down while the left side downpipe has one stud facing upwards and one facing downwards. Remove the upwards facing studs on the left and right downpipe. You will need a long extension with a swivel and deep socket to get to the nuts.

**LEFT SIDE DOWNPIPE****RIGHT SIDE DOWNPIPE****RIGHT SIDE DOWNPIPE**



07. From under the vehicle, remove the last two nut from the downpipes, one from each side. Last, make sure the O2 sensors have been disconnected, completely remove the bolt left in the support brackets in step #3. Carefully remove the downpipes.



08. Transfer over the secondary O2 sensors to the new downpipes. Use the new hardware and gaskets supplied with the downpipes. Install the new Alpha Lower Downpipes in the reverse order of removal.

- a.** There are two different types of nuts supplied with the kit and are used in different areas. Six of the nuts are a standard non-locking flange nut with anti-vibration serrations on the flange face. The other type is a distorted thread type locking flange nut. You notice some markings on the top of the nut. Use the locking nuts for the connection between the upper and lower downpipe and the remaining six non-locking for the mounting brackets and lower downpipe to exhaust connection.

**NOTES:** If using an exhaust other than a 3" system, an adapter plate is supplied to aid in sealing the connection. The plate will install between the downpipe flange and the exhaust flange. The bolt pattern of the Alpha Downpipe matches the OEM pattern. The plate is there to provide additional sealing area.

09. Enjoy.