



**OFFSET STEERING RACK EXTENDERS
INSTALLATION INSTRUCTIONS:**

YEAR RANGE MAKE MODEL CHASSIS
09-15 NISSAN 370Z/FAIRLADY Z Z34
08-13 INFINITI G37/SKYLINE V36

PART NUMBER:
OSNS-0400

We recommend that installation of all Voodoo13 parts be completed by a professional who is experienced in suspension tuning. With proper installation and maintenance, Voodoo13 suspension products will provide exceptional performance and durability. For any questions, please contact Voodoo13 immediately. We thank you for choosing Voodoo13 for your suspension tuning needs!

NEED HELP?

Our representatives are here to help you with any questions concerning the operation of this product.

CALL 480-889-0812

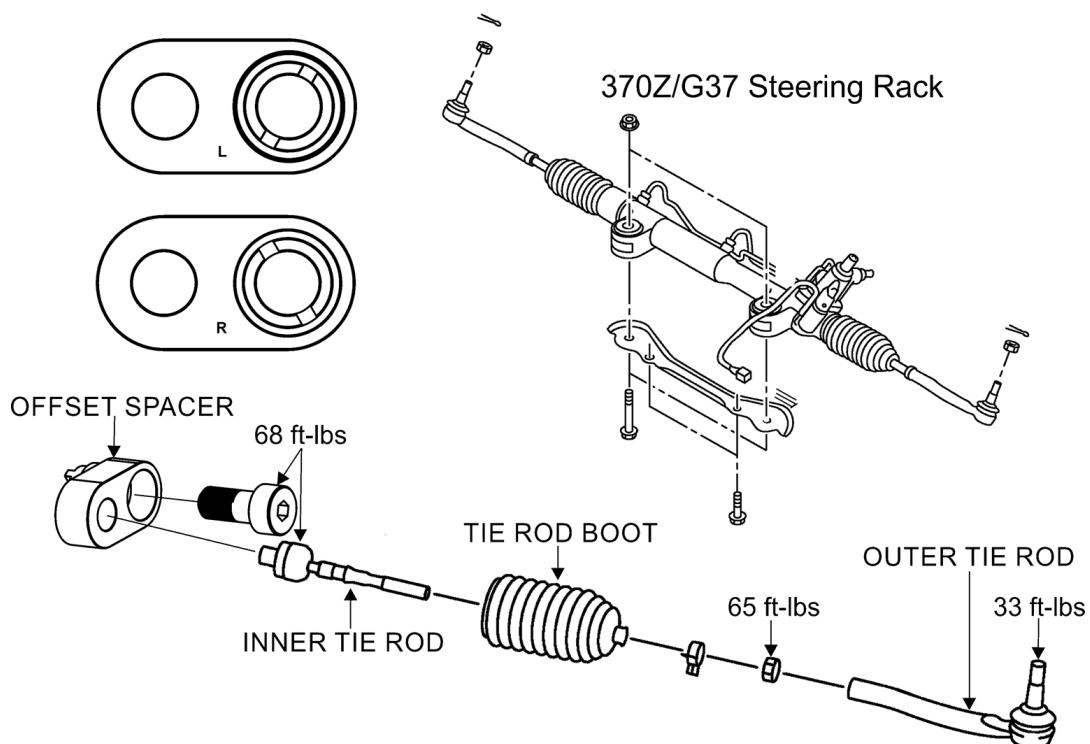
Monday thru Friday 8:30am to 5:30pm MST

RECOMMENDED TOOLS AND SUPPLIES

- General Mechanics Tool Set
- Anti-Seize Lubricant
- Torque Wrench

PART BREAKDOWN

NOTE: For any OE hardware please refer to OEM service manual for torque specifications. For all included hardware please torque to specifications shown below. It is recommended to use a torque wrench when tightening instead of an impact gun and apply anti-seize on all threads.



INSTALLATION PROCEDURE

Step 1: Lift the vehicle to a safe height using the recommended factory lift points to work underneath the rear suspension. Ensure to place safety jack stands where recommended by Nissan before anyone goes underneath the car (unless using a vehicle lift with safety locks).

Step 2: Remove front wheels to gain access to the tie rods. Then locate the outer tie rod's shank that's bolted into the front knuckle. To remove, pull out the cotter pin that holds the slotted nut in place. Next break the slotted nut loose and unscrew the nut until it reaches the top of the stud. From here, grab a hammer to knock the shank of the outer tie rod by hitting the top of the nut (Nut protects the threads from the hammer).

Step 3: Break the jam nut loose that's adjacent to the outer tie rod. Now take off the outer tie rod.

Step 4: Remove the tie rod boot to expose the inner toe rod. The inner tie rod will be locked in place with a four-sided clip. Use a flat head screwdriver to remove clip, make sure to open up the sides evenly with the flat head. The next step to use a wrench to twist off the inner tie rod.

Step 5: Next grab the corresponding offset steering rack spacers and install them just like the diagram on the previous page (L and R are engraved on the part for your convenience). The provided bolts are inserted into the spacers then screwed into the steering rack. Apply anti-seize on the bolts and torque them to **68 ft-lbs** using a torque wrench.

Step 6: Thread the inner tie rod into the spacer and torque to **68 ft-lbs** using a torque wrench.

Step 7: (Up to user) Install the tie rod boot back on the inner tie rod and then reuse the wire to secure the boot to the tie rod.

Step 8: Now thread the jam nut and the outer tie rod back onto the inner tie rod. Insert the outer tie rod shank into the knuckle. Smack the outer tie rod into the tapered hole to seat the shank to prevent slipping when tightening the slotted nut. Torque the slotted nut at **33 ft-lbs** using a torque wrench. Insert a new cotter pin through the hole of the shank and bend the pin around the nut to keep it from falling out.

Step 9: Repeat Steps 2-8 for the other side.

Step 10: Lower vehicle safely back to the ground and perform a vehicle alignment. You are finished!

WARRANTY

All products sold are subject to the following warranty:

Voodoo13 offers a Limited Lifetime Warranty for our products to the original retail consumer against defects and workmanship when used on light truck and car applications under normal operating conditions. This warranty does not apply to parts that have been improperly installed or wearable items such as, but not limited to, worn bushings or bearings unless proven to be defective from the manufacturer.

Exterior finish on all Voodoo13 products is not considered a valid warranty; consumers are responsible for the maintenance of paint, anodize or raw metal finish.

The consumer will be responsible for the removal and freight costs both to and from the Distributor from which the product was originally purchased. Proof of purchase and product registration through the Voodoo13 website is mandatory in order to receive warrantee replacement; original invoice from the Distributor from which the product was purchased must accompany the product in question for warrantee.

Voodoo13 has the right to refuse a warrantee claim if procedures are not met by the original consumer. All returns must have an R.M.A. approval from Voodoo13 prior to shipping direct to the Voodoo13 facility. Exclusions from this warranty are sales outside of the United States, the finish, dents, rust, or any condition caused by abnormal use or neglect.

WARNING

High performance parts. For off-road use only. Installation should be carried out by a qualified facility. Improper use or installation may result in injury or death.



VOODOO13
254 W Broadway Rd
Mesa, AZ 85210
Ph: 480.889.0812
Fax: 480.829.8103
www.VOODOO13USA.com