



Part number PF5010
Jeep Grand Cherokee WK
2005-2010 3.7L V6

- 1- MR Tech Power-Flow intake (SR)
- 1- Web Nano/fiber dry filter (#1021)
- 1- Elbow hose (#3013)
- 1- Rubber grommet (#8002)
- 2- Power-band (.048) (#4004)
- 1- Vibra mount M6 (#6020)
- 1- Fender washer M6 (#6010)
- 1- Nut M6 (#6002)
- 1- 15mm hose @ 16"L (#3079)
- 1- Heat shield (#1970)
- 3- Heat shield clamps (#4010)
- 3- 1/2 hex bolts (#6019)
- 1- 4 page installation instructions.

Note: The C.A.R.B. Exempt sticker must be attached under the hood in a manner such that it is easily viewed by an emissions inspector.

Congratulations! You have just purchased the best engineered, dyno-proven cold air intake system available.

Please check the contents of this box immediately.

Report any defective or missing parts to the Authorized Injen Technology dealer you purchased this product from. Before installing any parts of this system, please read the instructions thoroughly. If you have any questions regarding installation please contact the dealer you purchased this product from.

Installation DOES require some mechanical skills. A qualified mechanic is always recommended.

*Do not attempt to install the intake system while the engine is hot. The installation may require removal of radiator fluid line that may be hot.

Injen Technology offers a limited lifetime warranty to the original purchaser against defects in materials and workmanship. Warranty claims must be handled through the dealer from which the item was purchased.

Injen Technology 244 Pioneer Place Pomona, CA 91768 USA

Please check the contents of this box immediately.

Note: This intake system was Dyno-tested with an Injen filter and Injen parts. The use of any other filter or part will void the warranty and CARB exemption number.

Parts and accessories are available on line at "Injenonline.com"

Note: The installation of this cold air intake does require mechanical skills. Removal of the front bumper requires loosening and removing several plastic plugs and screws that may be difficult. In addition to removing the bumper, you will also have to remove the air resonator box, battery and tray when beginning this installation. **Injen strongly recommends that this system be installed by a professional mechanic.**

MR Technology, "The World's First Tuned Intake System!"

Optimum performance, Factory safe air/fuel ratio.





Figure 3
Stock air intake box and air intake duct shown above.

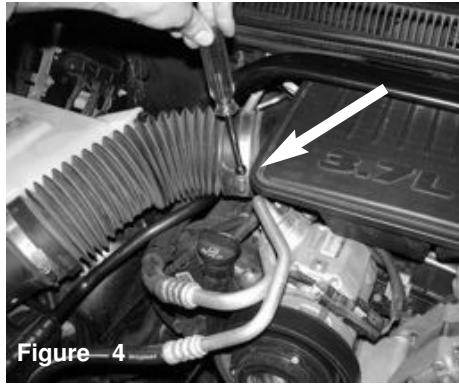


Figure 4
Loosen the clamp on the resonator box using 8mm nut driver.

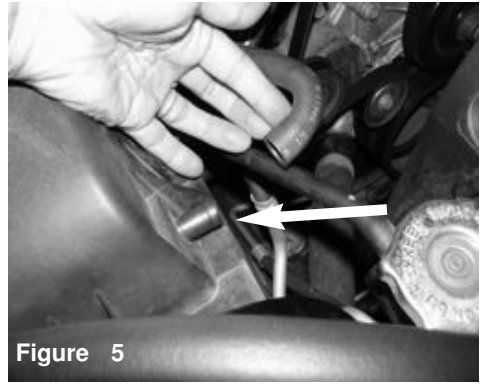


Figure 5
Pull back the crank case line from the air box.

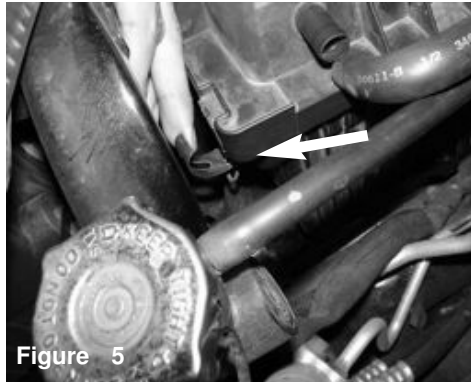


Figure 5
Un-clip the upper half of the air box.

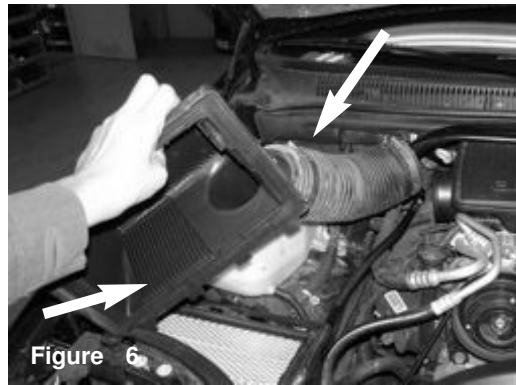


Figure 6
Lift up and pull the upper half of the air box assembly.

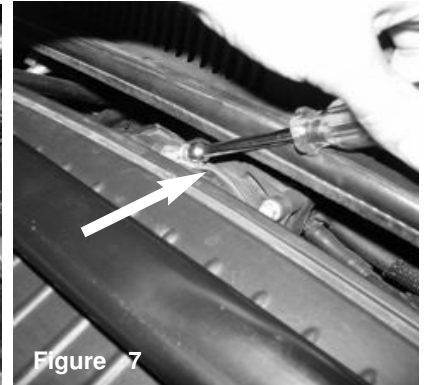


Figure 7
Loosen the clamp on the throttle body.



Figure 8
Disconnect the temperature sensor harness.



Figure 9
Lift up and pull the air box resonator out of vehicle.

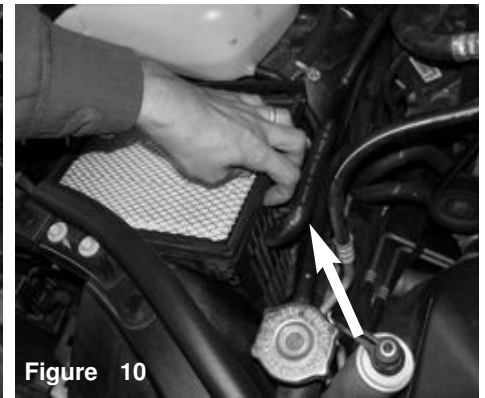


Figure 10
Lift up the bottom half of the air box



Figure 11
Lift up the bottom half of the air box and remove from vehicle.

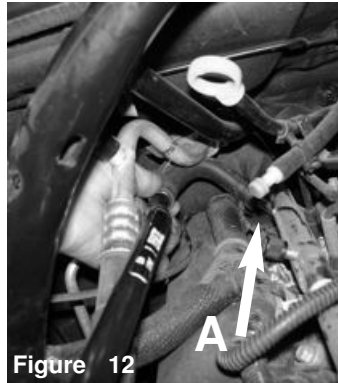
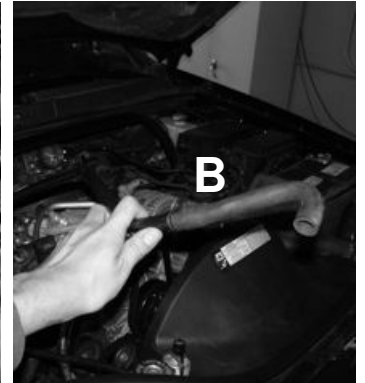


Figure 12
A) Carefully pull the crank case line away from the engine.



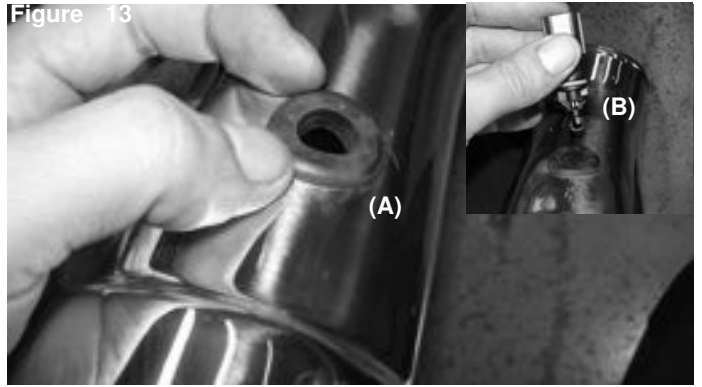
B) Remove crank case from engine.

Figure 12



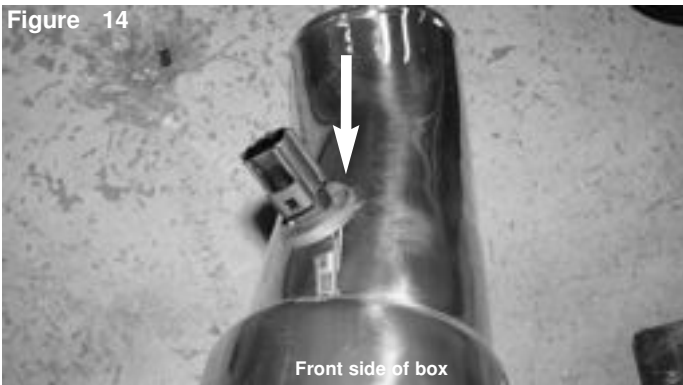
Carefully turn then pull out the temperature sensor out of resonator box.

Figure 13



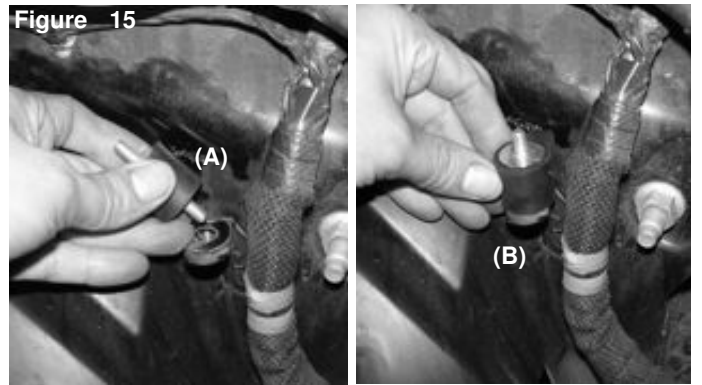
Locate the sensor grommet in this kit and press it into the pre-drilled hole as shown above (A). Continue to press the sensor grommet into the pre-drilled intake hole until the top sits flush with the intake out side radius (B). Install the temperature sensor into the grommet.

Figure 14



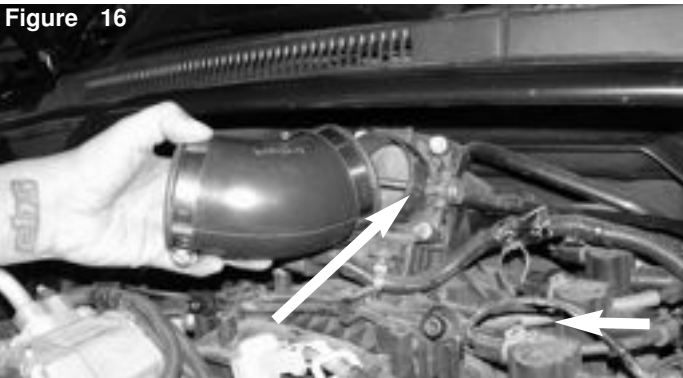
Temperature sensor should sit nice and secure in the grommet, shown above.

Figure 15



A) Install the provided M6 vibra mount to the threaded insert located next to the radiator reservoir.
B) Secure and tighten the M6 vibra mount.

Figure 16



Install the 2-3/4" side of elbow hose with clamps provided to the throttle body.

Figure 17



Position the hose so that it does not hit the support brace.

Figure 18



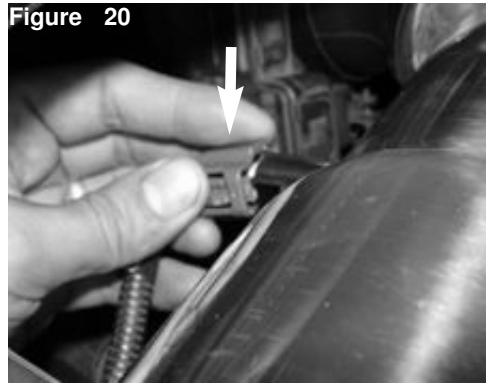
Install the new provided 15mm hose to the fitting on engine side.

Figure 19



Position the intake tube to the elbow hose and bracket to the vibra mount.

Figure 20



Connect the temperature sensor harness.

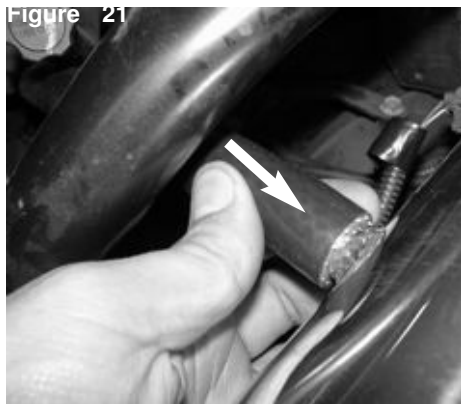


Figure 21
Attach the other end of the 15mm hose to the fitting on the intake tube.

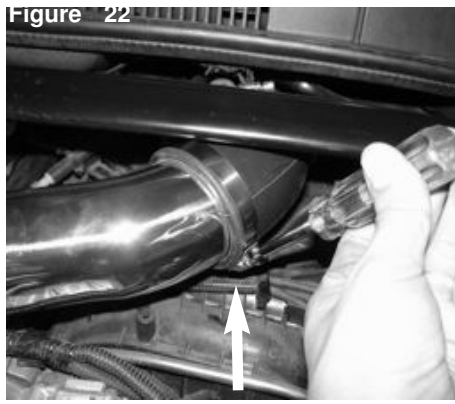


Figure 22
Position the elbow hose for the best possible fit. Tighten the clamp using 8mm nut driver.



Figure 23
Secure the bracket using M6 nut and washer.

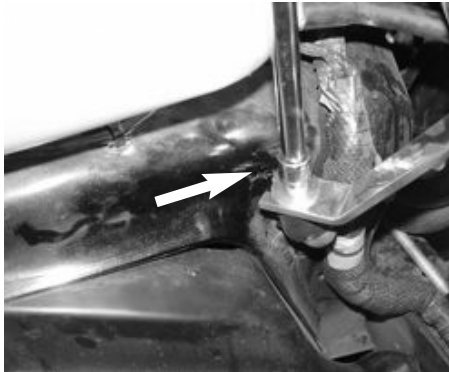


Figure 24
Tighten the washer using 10mm socket and ratchet.

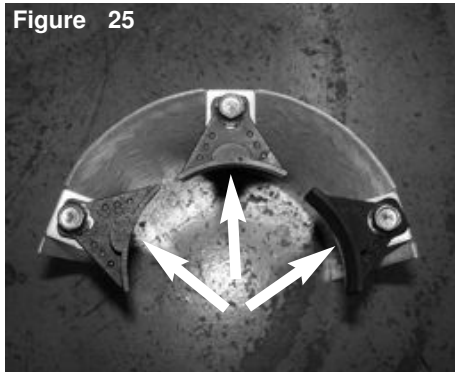


Figure 25
Install the heat shield clamps to the tabs on heat shield. Secure using provided screws. Do not tighten.

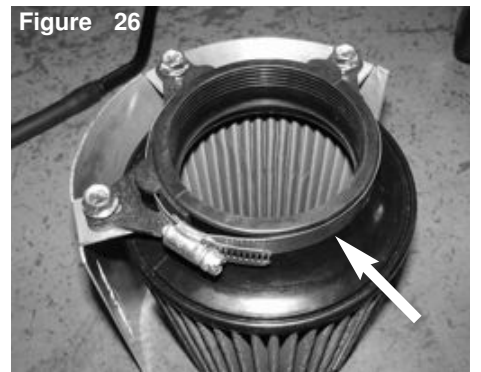


Figure 26
Install the filter to the inside of the tabs. Position the filter and slide the clamp over the heats shield clamps. Tighten the screws using 13mm socket or wrench.

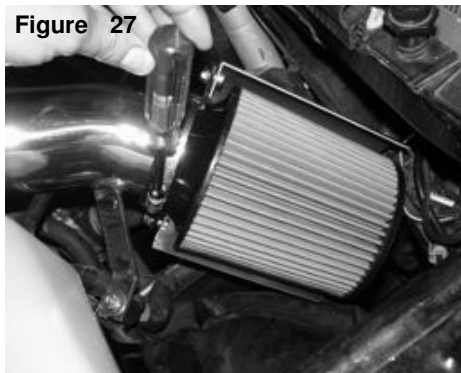


Figure 27
Install the air filter with heat shield to the intake tube and tighten the clamp using 8mm nut driver.

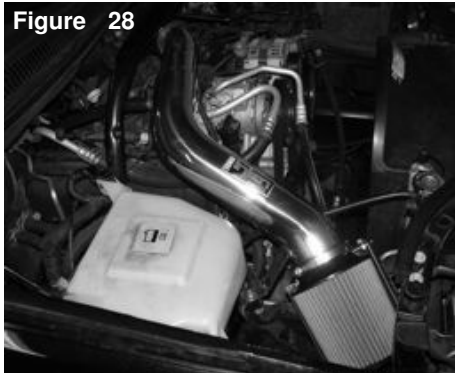


Figure 28
Position the air filter for the best fit.



Figure 29
Your Injen intake installation is now complete. Check for any rubbing or any rattling. Tighten all clamps and re-tighten if necessary.

1. Upon completion of the installation, reconnect the negative battery terminal before you start the engine.
2. Align the entire intake system for the best possible fit. Once the intake has been properly fitted continue to tighten all nuts, bolts and clamps.
3. Periodically, recheck the alignment of the intake system and make sure there is proper clearance around and along the length of the intake. Failure to follow proper maintenance procedures may cause damage to the intake and will void the warranty.
4. Start the engine and listen carefully for any odd noises, rattles and/or air leaks prior to taking it for a test drive. If any problems arise go back and check the vacuum lines, hoses and clamps that maybe causing leaks or rattles and correct the problem.
5. Check the filter for excessive dirt build up. Clean or replace the filter with an original Injen filter (can be bought on-line at "injenonline.com"). Congratulations! You have just completed the installation of the best intake system sold on the market. Enjoy the added power and performance of your new intake system.