



**Part number PF7064**  
**2015-16 Cadillac Escalade, ESV**  
**6.2L V8**  
**2014-16 Chevrolet Silverado**  
**5.3L & 6.2L V8**  
**2015-16 Chevy Tahoe 5.3L V8**  
**2015-16 Chevy Suburban 5.3L V8**  
**2014-16 GMC Sierra 5.3L & 6.2L V8**  
**2015-16 GMC Yukon, XL, Denali**  
**5.3L & 6.2L V8**  
**SRI Intake System**

- 1- 1pc. SRI air intake pipe
- 1- 5.00" Injen dry filter (#1022BB)
- 1- Heat Shield (#11104)
- 1- 3.75" Velocity Stack Adapter (#6049)
- 1- 3 3/4" - 3 1/2" Step hose (#3133)
- 1- 3.50" Straight hose (#3037)
- 4- #56 clamps (#4005)
- 4- M6 Button Screws (#6083)
- 2- M4 Button head screws (#6047)
- 1- Rubber Trim @ 19" L (#6058)
- 2- 15mm Hose @ 15" L (#8079)

1- 2 Page instructions

**Note: Injen strongly recommends that this system be installed by a professional mechanic.**

All parts and accessories now sold on-line at : [www.INJENONLINE.COM](http://www.INJENONLINE.COM)  
 Injen Technology  
 244 Pioneer Place Pomona  
 CA 91768 USA



PF7064 PAGE 1-2

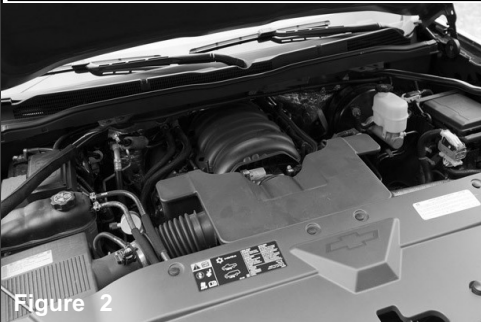
**Congratulations! You have just purchased the best engineered, dyno-proven cold air intake system available. Please check the contents of this box immediately.**

Report any defective or missing parts to the Authorized Injen Technology dealer you purchased this product from. Before installing any parts of this system, please read the instructions thoroughly. If you have any questions regarding installation please contact the dealer you purchased this product from. Installation DOES require some mechanical skills. A qualified mechanic is always recommended. \*Do not attempt to install the intake system while the engine is hot. The installation may require removal of radiator fluid line that may be hot. Injen Technology offers a limited lifetime warranty to the original purchaser against defects in materials and workmanship. Warranty claims must be handled through the dealer from which the item was purchased.

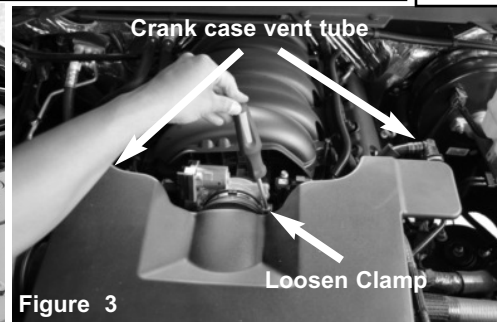
**Note: This intake system was Dyno-tested with an Injen filter and Injen parts. The use of any other filter or part will void the warranty. Parts and accessories are available on line at "Injenonline.com"**

**M.R. Technology**  
**"The World's First Tuned air Intake System!"**  
 Factory safe air/fuel ratio's for Optimum performance Patent# 7,359,795  
 Now equipped with "Air Fusion" Patent pending  
**"At Injen Technology, we didn't copy the step down process, we invented it!"**

**Warning: Manufactures attempting to duplicate Injen's patented process will now face legal action.**  
 MR Technology Step down process:  
 1- Calibration Method for Air Intake Tracts for Internal Combustion Engines. Covered under Patent# 7,359,795  
 2- Calibration Device for Air Intake Tracts for Internal Combustion Engines. Published and patent pending  
 3- Calibration Method and Device for Air Intake Tracts having Air Fusion Inserts. Published and patent pending



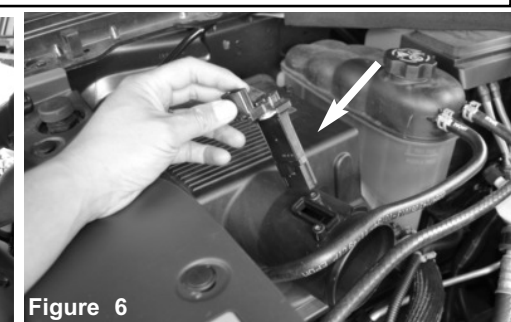
**Figure 2**  
 Stock air box assembly shown in this picture. Disconnect battery before the install.



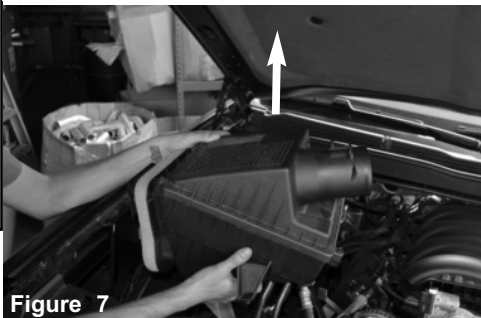
**Figure 3**  
 Use a 8mm nut driver and loosen the clamp on the throttle body. Also disconnect the two crank case vent tubes connected to the resonator duct tube on the throttle body.



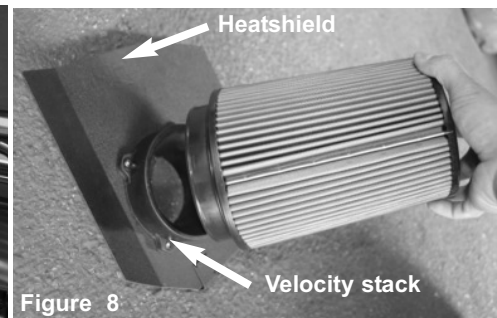
**Figure 5**  
 Remove the resonator air duct tube.



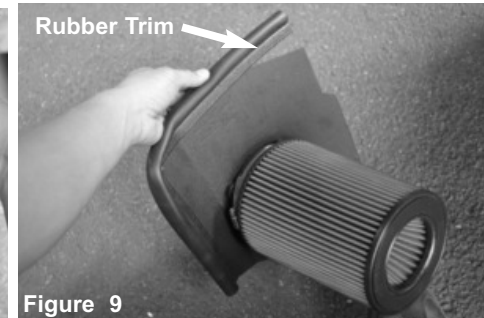
**Figure 6**  
 Disconnect the MAF sensor harness, unscrew the two screws and then pull the MAF sensor out of the OE air box assembly.



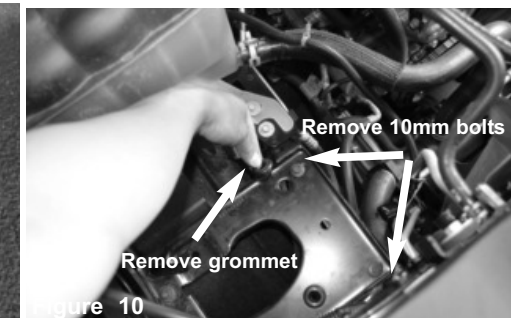
**Figure 7**  
 Firmly lift up on the OE air box assembly and remove the OE air box assembly from the engine bay.



**Figure 8**  
 Place the velocity stack adapter onto the heatshield and secure it with 4-M6 button head screws. Then place the filter onto the velocity stack.



**Figure 9**  
 Place the 19" rubber trim onto the end of the heat shield.



**Figure 10**  
 Remove the two 10mm bolts and front grommet from the OE air box assembly tray.

The SuperNano-Web filter media is a dry synthetic media that outperforms the competition. The media itself is a proprietary base blend of synthetics and cellulose. Cellulose fibers are larger than synthetic fibers, and have larger spaces between the fibers, causing contaminants to load in the depth of the media and plug the airflow path. This creates higher restriction levels and less capacity. The synthetic fibers in the SuperNano-Web media are submicron in diameter and have small interior fiber spaces, which result in more contaminants being captured on the surface of the media. This can help keep restriction levels low as the filter loads with dirt and contain-

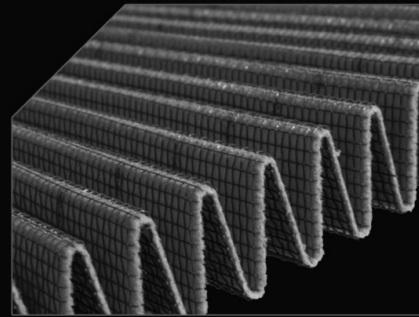
If you look at the picture to the left, you can see the Nano-fiber web on top of our base media. That web, or SuperNano-Web as we like to call it, helps trap smaller particles and protect your engine.

**To Clean your filter:**

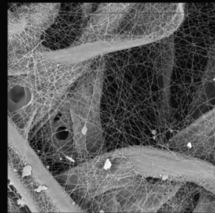
Carefully remove the filter from the housing. Once removed, wipe down the housing using a clean shop towel, being careful not to knock any dirt and/or debris in the air inlet. Your filters can be cleaned by carefully vacuuming the filter media from the dirty side, or by holding the filter with one hand and carefully blowing the filter media at a 45-degree angle from the clean side using low-pressure shop air (15-20 lbs. psi).

**\*IT IS IMPORTANT TO NOT USE ANY CLEANERS ON THE SUPERNANO-WEB MEDIA OR APPLY ANY OIL!!!**

**injen**<sup>®</sup>  
TECHNOLOGY



Existing media without  
Injen SuperNano-Web Technology



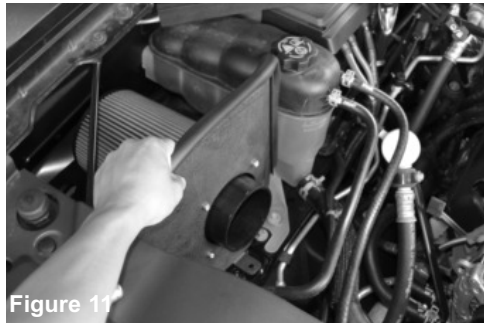
Superior Injen  
SuperNano-Web Technology



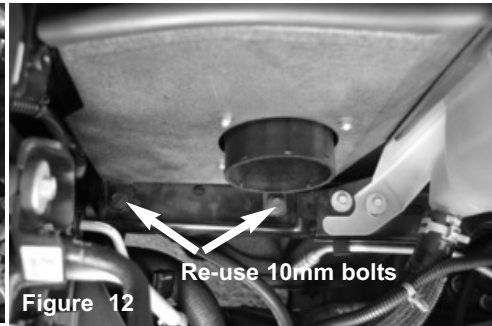
A New Generation of Filters  
Designed to perform and  
filter like no other

INJEN SuperNano-Web Technology

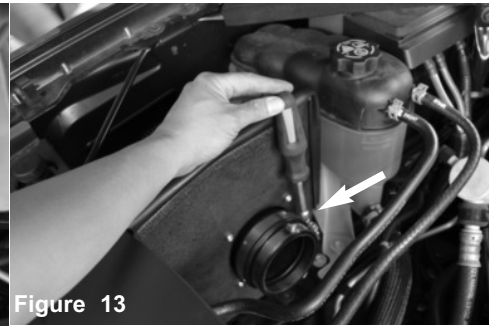
**NOTE: DISCONNECT BATTERY BEFORE INSTALLATION!!!**



**Figure 11**  
Place the filter, adapter and heatshield assembly into the the Oe air box assembly tray.



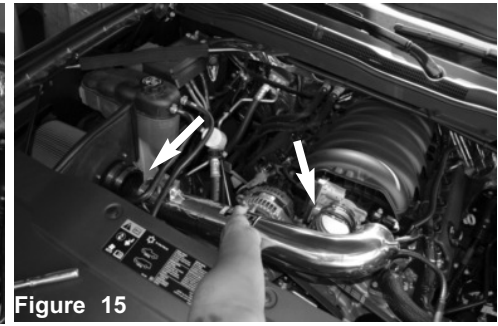
**Figure 12**  
Secure the heatshield brackets to the OE air box tray where the two 10mm bolts were removed from figure 10



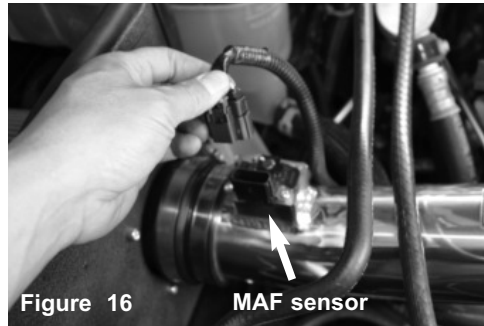
**Figure 13**  
Place the Step hose and two clamps onto the velocity stack adapter and secure the clamp on the velocity stack side for now.



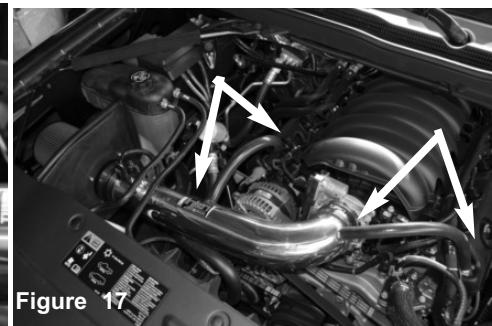
**Figure 14**  
Place the 3.50" straight hose and two clamps over the throttle body and secure the clamp on the throttle body side for now



**Figure 15**  
Position the pipe into the engine bay. Place both end of the intake pipe into the hoses.



**Figure 16**  
**MAF sensor**  
Place the MAF sensor into the MAF sensor adapter on the intake pipe. Secure the MAF sensor to the adapter with the two supplied M4 screws. Then attach the MAF sensor harness to the MAF sensor.



**Figure 17**  
Use the two supplied 15mm vacuum lines to connect the left/right bank crank case vent line to the intake pipe. Continue to tighten all the remaining clamps.



**Figure 22**  
Congratulations! You have just completed the installation of this intake system. Periodically, check the alignment of the intake, normal wear and tear can cause nuts and bolts to come loose. Failure to check the alignment and adjust the intake can cause damage that will void the warranty.

1. Upon completion of the installation, reconnect the negative battery terminal before you start the engine.
2. Align the entire intake system for the best possible fit. Once the intake has been properly fitted continue to tighten all nuts, bolts and clamps.
3. Periodically, recheck the alignment of the intake system and make sure there is proper clearance around and along the length of the intake. Failure to follow proper maintenance procedures may cause damage to the intake and will void the warranty.
4. Start the engine and listen carefully for any odd noises, rattles and/or air leaks prior to taking it for a test drive. If any problems arise go back and check the vacuum lines, hoses and clamps that maybe causing leaks or rattles and correct the problem.
5. Check the filter for excessive dirt build up. Clean or replace the filter with an original Injen filter (can be bought on-line at "injenonline.com"). Congratulations! You have just completed the installation of the best intake system sold on the market. Enjoy the added power and performance of your new intake system.