



Part Number: RD1425
1997-01 Acura Integra Type-R
1.8L 4 cyl.

- 1- Injen Cold air intake (CA)
- 1- **3" Injen Filter (#1014)**
- 1- 3" Straight Hose (#3044)
- 2- Power-bands (.362)(.048) (#4004)
- 1- 13" 10mm Hose (#3077)
- 1- 1/4" plastic coupler (#8008)
- 1 - m6Vibra-Mount (#6020)
- 1- m6 flange nut (#6002)
- 1- Fender Washer (#6010)
- 1- Instruction

Congratulations! You have just purchased the best engineered, dyno-proven cold air intake system available.

Please check the contents of this box immediately.

Report any defective or missing parts to the Authorized Injen Technology dealer you purchased this product from. Before installing any parts of this system, please read the instructions thoroughly. If you have any questions regarding installation please contact the dealer you purchased this product from.

Installation DOES require some mechanical skills. A qualified mechanic is always recommended.

*Do not attempt to install the intake system while the engine is hot. The installation may require removal of radiator fluid line that may be hot.

Injen Technology offers a limited lifetime warranty to the original purchaser against defects in materials and workmanship. Warranty claims must be handled through the dealer from which the item was purchased.

Injen Technology Co., Ltd. 244 Pioneer Place Pomona, CA 91768 USA

Please check the contents of this box immediately.

Note: This intake system was Dyno-tested with an Injen filter and Injen parts the use of any other filter or part will void the warranty and CARB exemption number.

Parts and accessories are available on line at "Injenonline.com"

Note: All parts and accessories are now sold on-line. Injen now sells air filter cleaning kits, recommended every 7000 miles
Log on to:

"injenonline.com"

Note: The installation of this cold air intake does require mechanical skills. Removal of the front bumper requires loosening and removing several plastic plugs and screws that may be difficult. In addition to removing the bumper, you will also have to remove the air resonator box, battery and tray when beginning this installation.

Injen strongly recommends that this system be installed by a professional mechanic.



Figure 1

Hydro-shield Part number X-1033



Hydro Shield Sold Separately

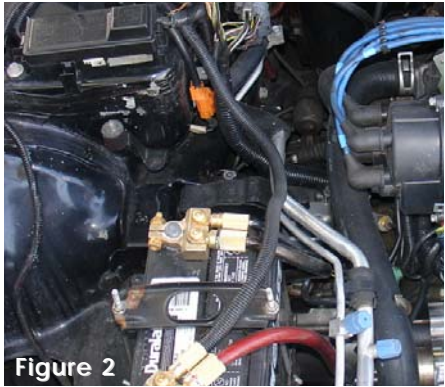


Figure 2

Loosen clamps on the air box and throttle body. Unhitch tension clips on the air box lid. Remove the top lid and remove panel filter. Unscrew bolts on the lower air box cleaner, then pull lower box cleaner out. The resonator box will also be pulled out.

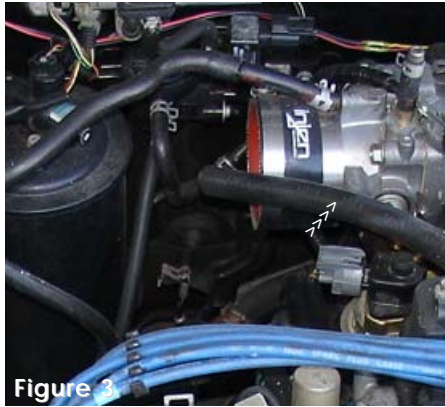


Figure 3

Place the 3" (76mm) straight hose over the throttle body. Place two clamps on the 3" hose and tighten the clamp on the throttle body end.

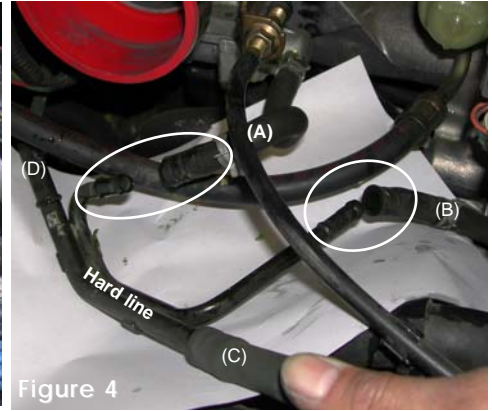


Figure 4

Remove the PCV hard pipe connecting the coolant line(A) and (B) and breather hose (C) and (D). Coolant lines are disconnected (A) and joined together with the 1/4" coupler.

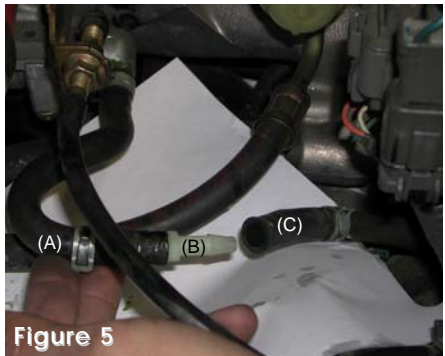


Figure 5

Once the PCV hard pipe has been removed, insert 1/4" coupler (B) into the intake coolant port (A). Insert coupler into the coolant delivery port (C). U

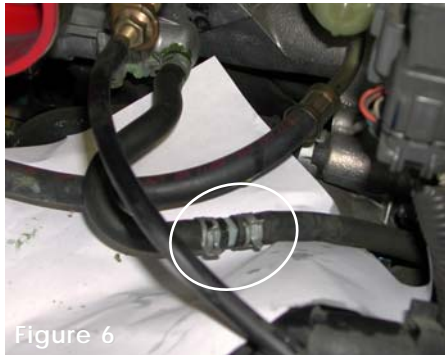


Figure 6

Once both coolant lines have been joined together with the coupler, continue to use the stock clamps to secure the in place.

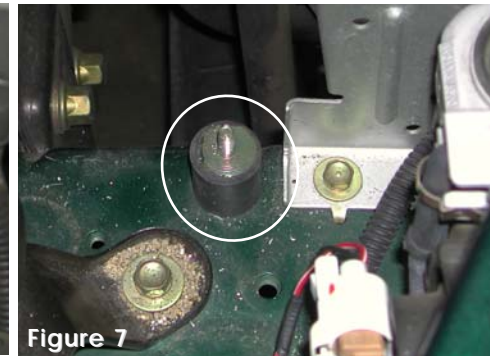


Figure 7

The vibra-mount is screwed into the passenger side frame next to the reservoir bottle brace.



Figure 8

The filter end side of the intake is lowered into the engine compartment. The lower end of the intake is wedged between the engine and the frame as shown above. The intake bracket is also aligned to the vibra-mount stud.

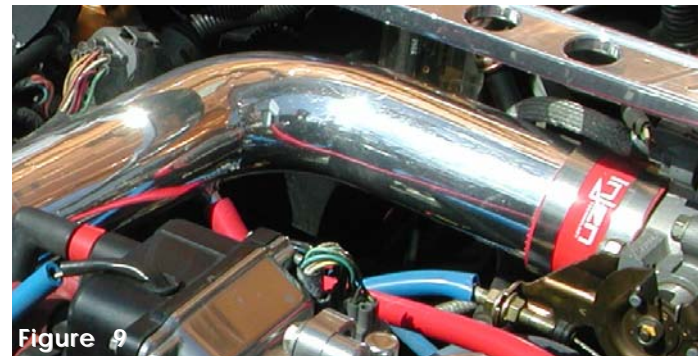


Figure 9

Once the intake bracket has been aligned to the vibra-mount stud, the top end of the intake is pressed into the throttle body hose. The power band on the intake side is semi-tightened to secure the intake in place.

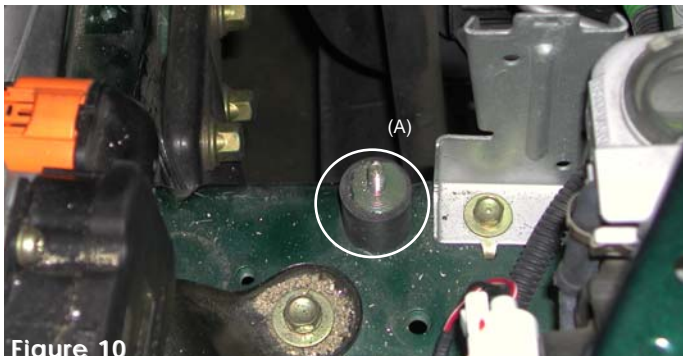


Figure 10

Once the top intake has been pressed into the throttle body hose, the intake bracket is aligned to the vibra-mount stud. Use the fender washer and flange nut to secure the intake in place (A).



Figure 11

The entire cold air intake has been installed and aligned to all mounting points. Good clearance is a must through out the length of the intake. Periodic refitting will be required to adjust for possible moving of the intake, clamps or vacuum lines.



Figure 12

Press the 13"-10mm hose over the crankcase port (A) press the other end over the 1/2" intake port (B).

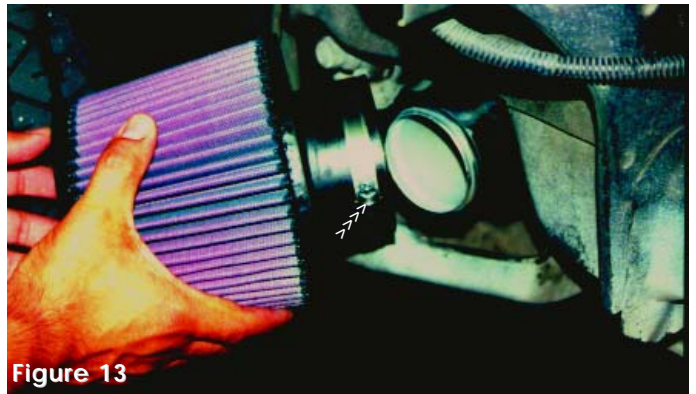


Figure 13

The filter neck is aligned and pressed over the the end of the intake. Once the intake has reached the the desired stops inside of the filter, continue to tighten the filter neck clamp.



Figure 14

The filter is aligned and fully pressed over the intake. The filter neck clamp is also fastened to prevent the filter from falling off.



Figure 15

Align the entire intake for best possible fit. Once the intake has been cleared from any moving parts or free from contact with engine parts, continue to tighten all nuts, bolts and clamps.

- 1- Loosen clamps on the air intake box and the throttle body. Unhitch latches located on top of the air box lid of the air cleaning box. Remove the top lid and remove the panel filter that sits on top of the lower air box cleaner. The air intake box and air intake duct leading to the throttle body are now all removed. This installation requires the removal of the front bumper, the air resonator box located in the lower, passenger side bumper will also be removed. (See fig. 2)
- 2- Insert the 3.00" straight hose over the throttle body and use two clamps. At this point only tighten the clamp on the throttle body side. (See fig. 3)
- 3- Remove the PCV hard pipe connecting the coolant bypass hose and crank case breather line. Insert coupler into coolant delivery port, use the stock clamp. Now, insert the coupler into the intake delivery port, again the stock clamps are used to secure the coolant lines together. (See figs. 9 and 12)
- 4- Screw the 6mm vibra-mount into the car frame, turn until the vibra-mount has bottomed out. (See fig. 7)
- 5- Position the cold air intake in the engine compartment, insert filter end into the resonator opening. Align the intake bracket to the vibra-mount stud. The intake bracket will sit flush on top of the vibra-mount. Slowly, insert the top end of the intake into the throttle body hose, semi-tighten the clamp on the throttle body side. (See figs. 7 thru 9)
- 6- Once the cold air intake has been aligned, take the 6mm flange nut and fender washer and screw it over the vibra-mount stud, this will help secure the entire intake in place. (See fig. 9 and 10)
- 7- Place the Injen filter over the lower end of the cold air intake and firmly tighten the clamp on the filter neck. (See figs. 13 and 14)
- 8- Align the entire intake for best fit. Make sure there is plenty of clearance around the diameter and the length of the intake. There should be no rubbing anywhere along the length of the intake. Now continue to tighten all nuts, bolts and clamps. (See fig. 11 and 15)
- 9- Take the 12"- 10mm hose and press one end over the crank case port, Press the other end over the 1/2" (12mm)nipple on the cold air intake. (See fig. 12)
- 10- Reverse the installation and replace the front bumper back to stock position, remove all tools and rags from the engine compartment, reconnect the battery terminals before starting the engine. Congratulations! You have just completed the installation. Enjoy the added power and enhanced performance.