



Congratulations! You have just purchased the best engineered, dyno-proven exhaust system available.

Please check the contents of this box immediately.

Report any defective or missing parts to the Authorized Injen Technology dealer you purchased this product from. Before installing any parts of this system, please read the instructions thoroughly. If you have any questions regarding installation please contact the dealer you purchased this product from.

Installation DOES require some mechanical skills. A qualified mechanic is always recommended.

*Do not attempt to install the intake system while the engine is hot. The installation may require removal of radiator fluid line that may be hot.

Injen Technology offers a limited lifetime warranty to the original purchaser against defects in materials and workmanship. Warranty claims must be handled through the dealer from which the item was purchased.

Injen Technology 244 Pioneer Place Pomona, CA 91768 USA

Please check the contents of this box immediately.
Parts and accessories are available on line at "Injenonline.com"

Part number SES1971

2017 Nissan Sentra

1.6L turbo 4cyl.

1- 3 piece cat back exhaust

3- 3.00 gasket (#17060)

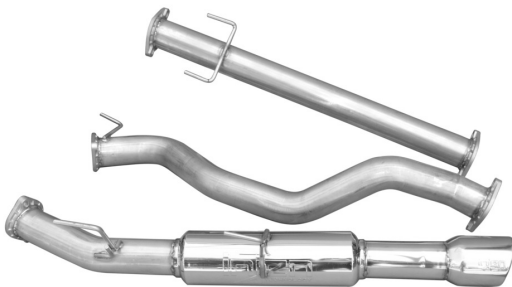
6- M10 hex bolt (#6038)

4- M10 hex nut (#6069)



Figure 1

Complete kit:



NOTE: All Injen exhaust systems are engineered to comply with the 95dB noise limit law specified by the California Highway Patrol and the Society of Automotive Engineers - Except ones that are designated for "Off-Road Use only".

Every Injen exhaust system is individually designed for a specific application and complies with the requirements of Sections 27150, 27151 & 27200 of the California Vehicle Code and Title 13 of the California code of Regulations, Section 10361, which establishes a noise limit of 95dB for passenger cars.

The age of your exhaust system along with certain engine modifications, such as headers, intake, etc., may also affect its current noise level output.

Please check with your local and state law enforcement agencies for exact regulation requirements.

NOTE: This exhaust system has a lot of room for adjustment, please install all components first, adjust for fitment and tighten all bolts and nuts last.

Figure 2



Figure 3
 OEM exhaust system. Secure vehicle on lift.

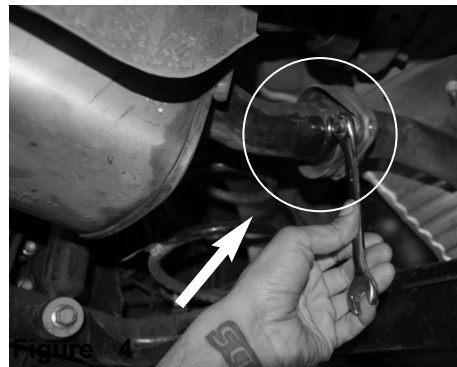


Figure 4
 Loosen and remove the rear section of the exhaust using 14m socket or wrench.



Figure 5
 With lubrication, loosen and remove the 3 rubber isolators and remove the rear section of the exhaust.

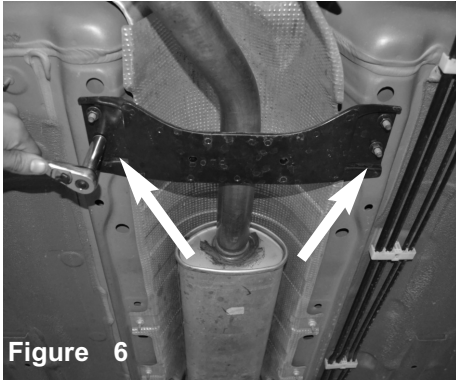


Figure 6
Loosen and remove the frame bracket support using 12mm socket or wrench. This will be re-installed.

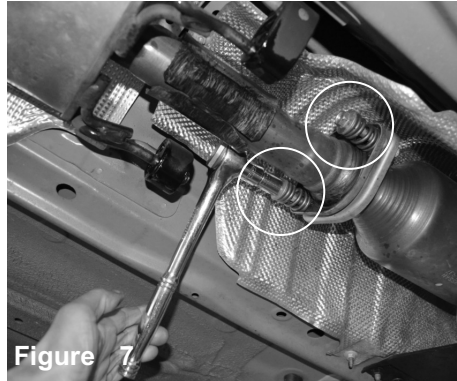


Figure 7
Loosen and remove the front section of the exhaust at the catalytic converter using 14mm socket or wrench.

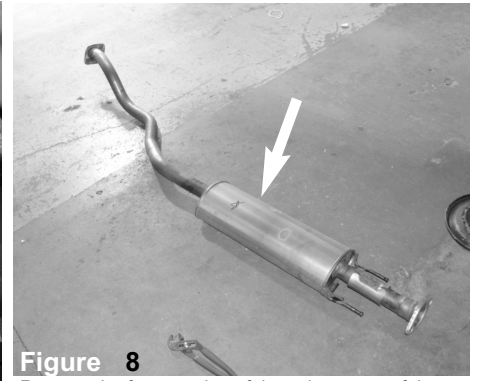


Figure 8
Remove the front section of the exhaust out of the vehicle.

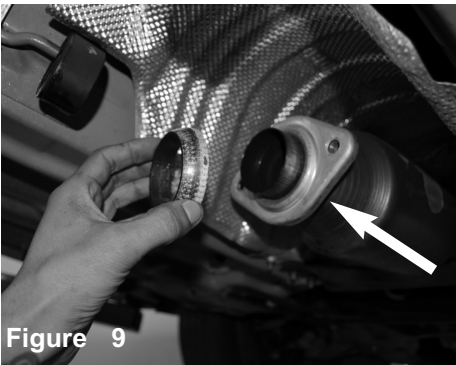


Figure 9
Remove the factory donut gasket from the cat.

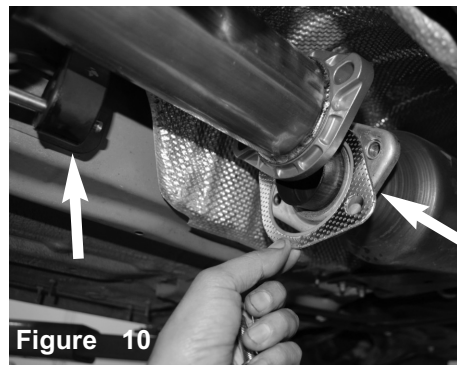


Figure 10
Install the front section of the exhaust. Secure the hangers to the isolators. Secure the flange using provided gasket and 2 M10 bolts. **Do not tighten.**

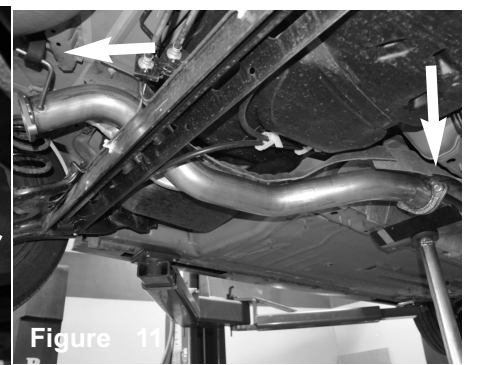


Figure 11
Install the mid section. Install the hanger to the rubber isolation mount. Connect the mid and front section using M10 bolts and nuts with gasket. **Do not tighten.**

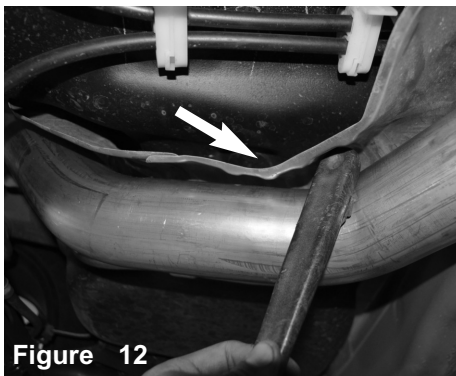


Figure 12
Do to the large pipe diameter, it may come in contact with heat shield, recommended to push back or bend back to have clearance.



Figure 13
Install rear section using provided M10 nuts and bolts with gasket. Snug fit all bolts and nuts using 14mm socket or wrench. Adjust for clearance and fitment. Make sure tip is centered of exhaust hole cut-out on bumper. Re-adjust if necessary. Use an extra hand for position of muffler and tighten all bolts and nuts. Exhaust flanges have a lot of room for adjustment.



Figure 14
Congratulations! You have just completed the installation of this exhaust system. Periodically, check the alignment of the exhaust, normal wear and tear can cause nuts and bolts to come loose. **Note: Check clearance and adjust if needed! Failure to check the alignment and adjust the exhaust can cause damage that will void the warranty. Injen Technology is not responsible for any damages caused by/from improper installation.**