



Part number SES2110  
2005-10 Scion tC  
2.4L 4 cyl.

- 1- Axle back exhaust system
- 1- Hanger bracket (M-20087)
- 2- m6 x 16mm bolt (#6005)
- 1- Instruction

**Congratulations! You have just purchased the best engineered, dyno-proven axle back exhaust system available.**

**Please check the contents of this box immediately.**

Report any defective or missing parts to the Authorized Injen Technology dealer you purchased this product from. Before installing any parts of this system please read the instructions thoroughly. If you have any questions regarding installation please contact the dealer you purchased this product from. Installation DOES require some mechanical skills. A qualified mechanic is always recommended.

\*Do not attempt to install the exhaust system while the car is hot. Injen Technology offers a limited one year warranty to the original purchaser against defects in materials and workmanship. Warranty claims must be handled through the dealer from which the item was purchased.

Injen Technology 244 Pioneer Place Pomona, CA 91768 USA

**Please check the contents of this box immediately.**

**NOTE:** All Injen exhaust systems are engineered to comply with the 95dB noise limit law specified by the California Highway Patrol and the Society of Automotive Engineers - Except ones that are designated for "Off-Road Use only".

Every Injen exhaust system is individually designed for a specific application and complies with the requirements of Sections 27150, 27151 & 27200 of the California Vehicle Code and Title 13 of the California code of Regulations, Section 10361, which establishes a noise limit of 95dB for passenger cars.

The age of your exhaust system along with certain engine modifications, such as headers, intake, etc., may also affect its current noise level output.

Please check with your local and state law enforcement agencies for exact regulation requirements.

**Note:** The installation of this axle back exhaust system does require mechanical skills. Injen strongly recommends that this system be installed by a professional mechanic.

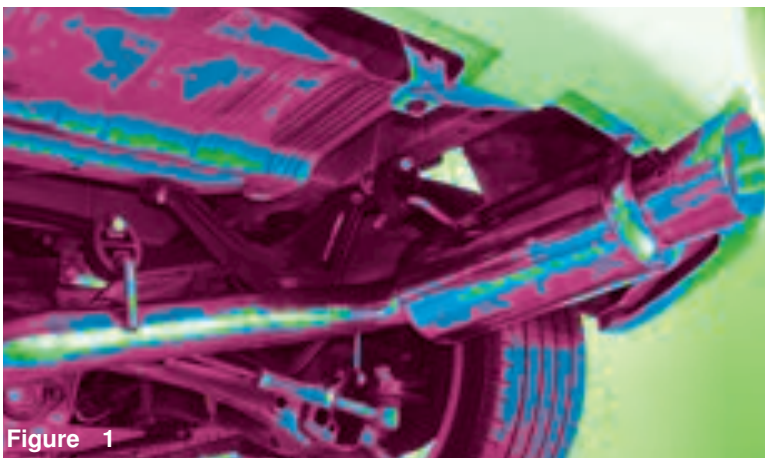
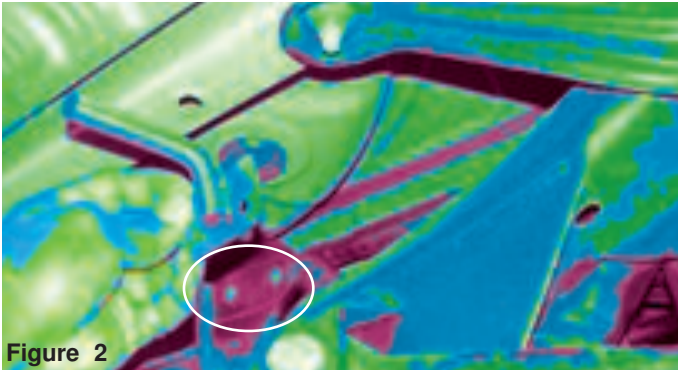
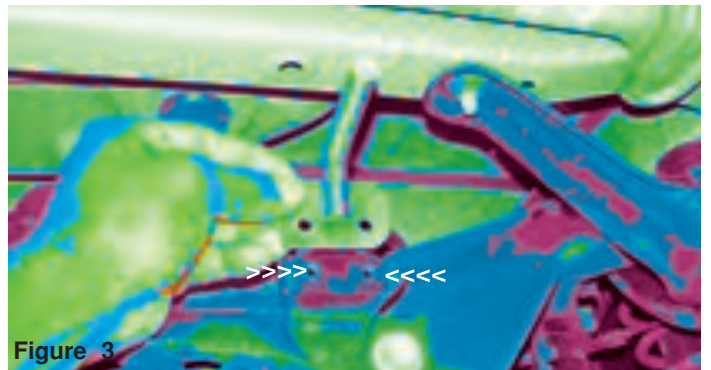


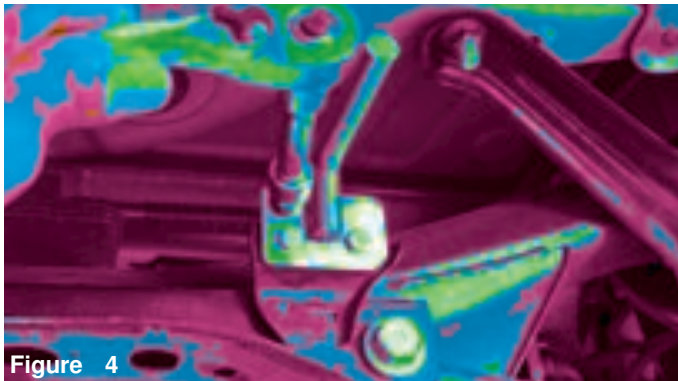
Figure 1



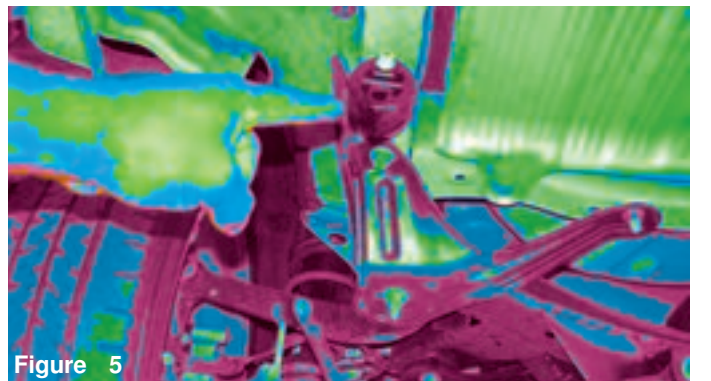
**Figure 2**  
Place hanger bracket against the stock brace located along the rear axle



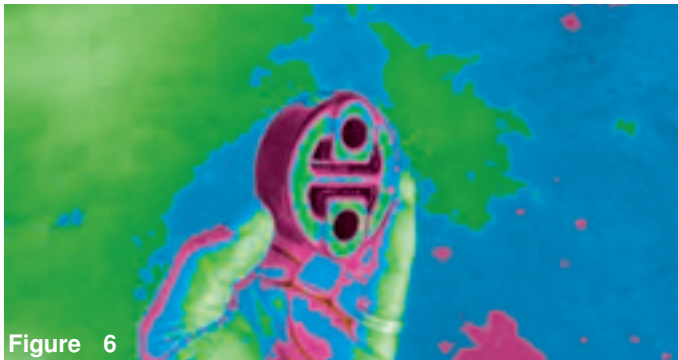
**Figure 3**  
Holes are lined up to the pre-drilled holes on the rear axle brace.



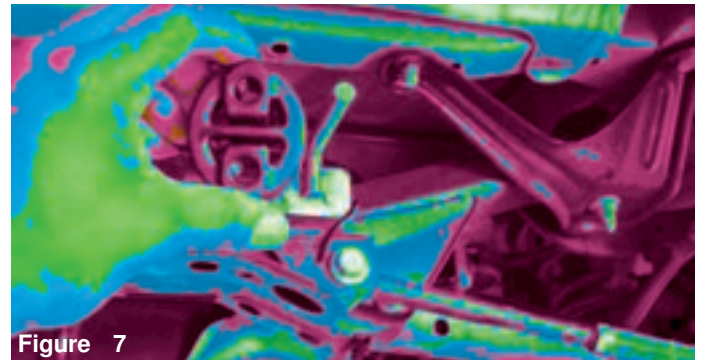
**Figure 4**  
The two m6 x 16mm bolts are used to secure the hanger bracket to the rear axle brace. This hanger bracket is fastened on the passenger side rear axle.



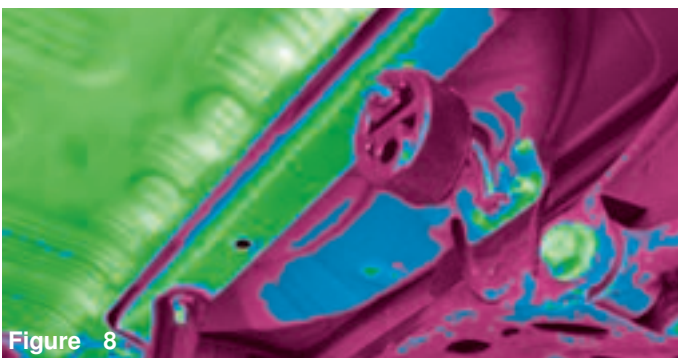
**Figure 5**  
Remove the donut or grommet from the stock hanger located on the driver side rear axle.



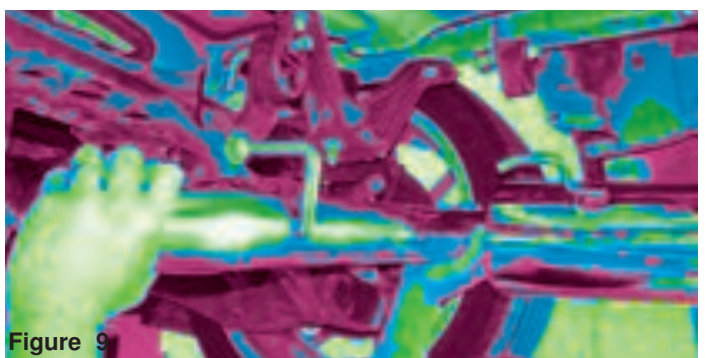
**Figure 6**  
Donut or grommet removed from the stock rear hanger.



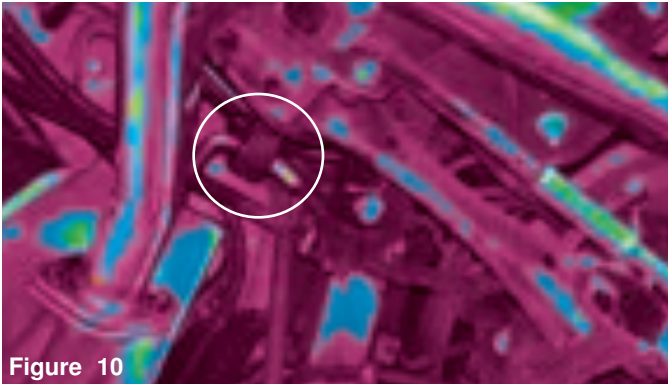
**Figure 7**  
The stock grommet is inserted into the new hanger located on the passenger side rear axle.



**Figure 8**  
Bottom view of the new grommet location.

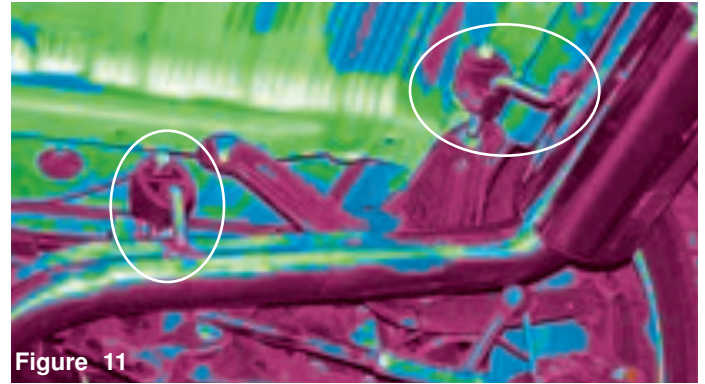


**Figure 9**  
Align and place all three hangers underneath all three grommets.



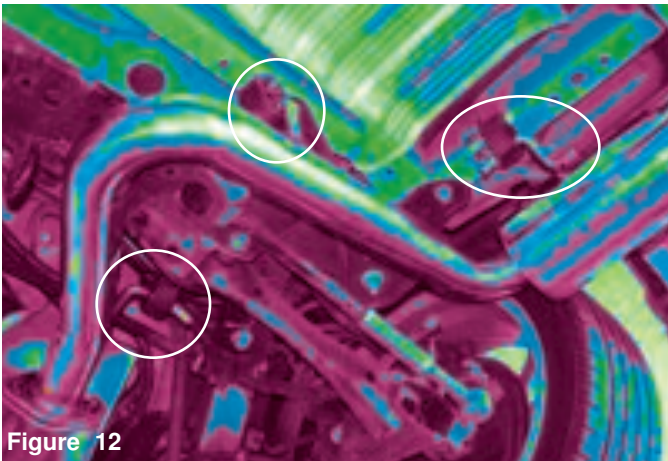
**Figure 10**

Insert hanger located by the flange into the rear hanging grommet



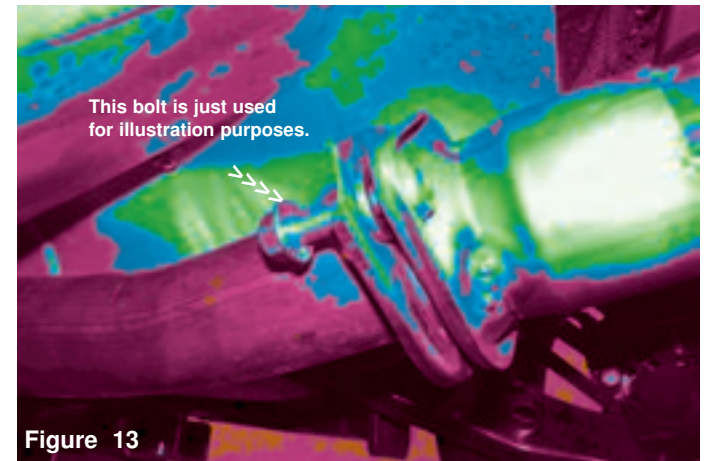
**Figure 11**

Insert the remaining two hangers into the two grommets as shown above.



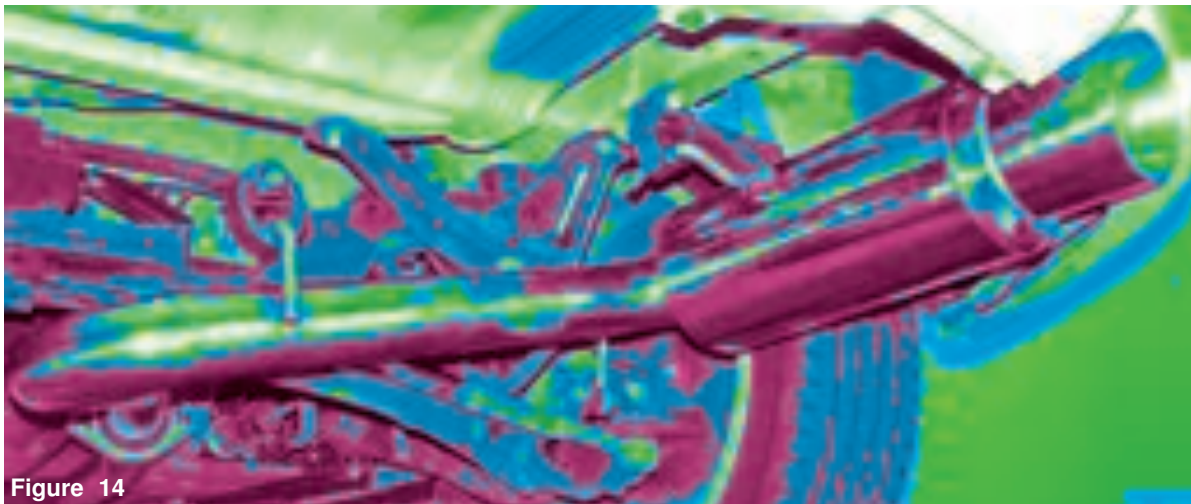
**Figure 12**

All three muffler hangers are now hanging on all three grommets.



**Figure 13**

Once the hangers have been hung and the muffler tip have been placed in the correct position continue to tighten the two stock m10 bolts as shown above. This illustration shows a regular 10mm bolt for demonstration purposes. Use the stock spring loaded tension bolts for flange connection.



**Figure 14**

Congratulations! You have just completed the installation of this axle-back exhaust system. Periodically, check the fitment of the exhaust system, be sure that the exhaust still continues to hang in the same position.