



Part number SP7024
2005-10 Chevy Cobalt 2.2L
2006-08 Chevy Cobalt SS 2.4L

- 1- Two piece cold air intake
- 1- **3" Injen filter (#1014)**
- 1- 3" straight hose (#3044)
- 1- 2 3/4" Elbow hose (#3186)
- 1- M6 vibra-mount (#6020)
- 1- M6 flange nut (#6002)
- 1- fender washer (#6010)
- 2- M4 button screws (#6047)
- 2- Power-Bands (.362) .048 (#4004)
- 2- Power-Bands (.312) .040 (#4003)
- 1- 7"L- 12mm Heater hose (#3078)
- 1- Instruction

Note: The C.A.R.B Exempt sticker must be attached under the hood in a manner such that it is easily viewed by an emissions inspector

Congratulations! You have just purchased the best engineered, dyno-proven cold air intake system available.

Please check the contents of this box immediately.

Report any defective or missing parts to the Authorized Injen Technology dealer you purchased this product from.

Before installing any parts of this system, please read the instructions thoroughly. If you have any questions regarding installation please contact the dealer you purchased this product from.

Installation DOES require some mechanical skills. A qualified mechanic is always recommended.

*Do not attempt to install the intake system while the engine is hot. The installation may require removal of radiator fluid line that may be hot.

Injen Technology offers a limited lifetime warranty to the original purchaser against defects in materials and workmanship. Warranty claims must be handled through the dealer from which the item was purchased.

Injen Technology 244 Pioneer Place Pomona, CA 91768 USA

Please check the contents of this box immediately.

Note: This intake system was Dyno-tested with an Injen filter and Injen parts the use of any other filter or part will void the warranty and CARB exemption number.

Parts and accessories are available on line at "Injenonline.com"

Note: The installation of this cold air intake does require mechanical skills. Removal of the front bumper requires loosening and removing several plastic plugs and screws that may be difficult. It is recommended that this system be installed by a professional mechanic. Be sure to disconnect the negative terminal before proceeding.





Remove the mass air flow sensor from the stock air intake box. Set the sensor to one side to be used later in the instruction.



Once the stock clamps have been loosened remove the entire air intake box from the engine compartment.



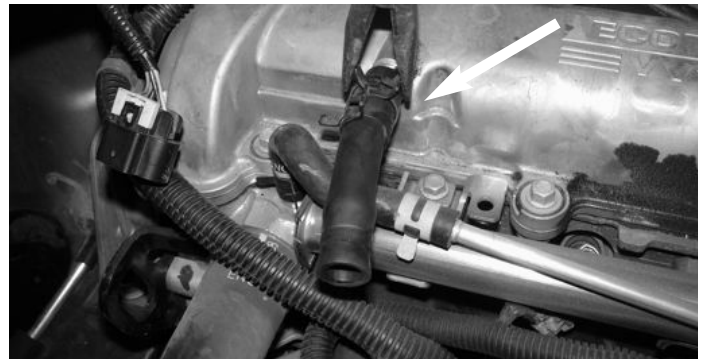
Remove the front bumper cover. With 10mm socket and ratchet, remove the resonator box from the vehicle (A). Remove the air box fitting, this will allow for the vibra mount to be secured (B).



Install the vibra-mount (A). Place the vibra-mount into the pre-tapped hole and turn the vibra-mount into the tapped hole until it bottoms out (B).



Install the elbow hose with clamps to the throttle body.



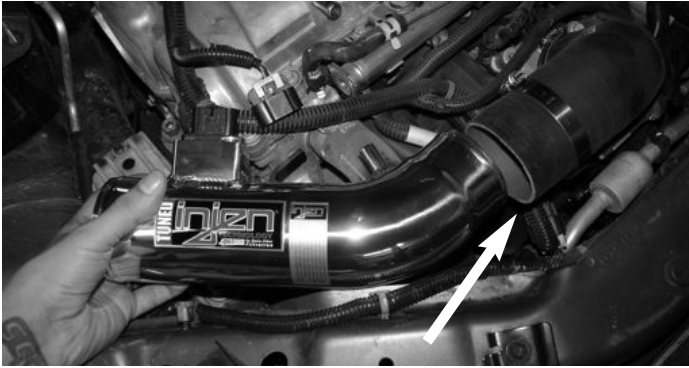
Remove the stock crank case hose from the engine.



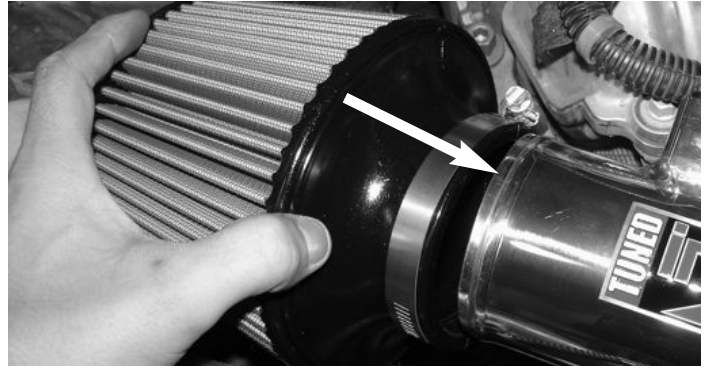
Replace the hose with the new provided 12mm hose .



Take the MAF sensor removed earlier from the stock air intake box and press it into the machined adapter. Use the stock sensor screws to reattach the MAF into the machined adapter. Secure the MAF sensor using the 2 M4 screws provided.



Take the primary intake and press the end into the hose on the throttle body. Position for best possible fit.



Once the primary intake has been set in place semi-tighten the clamp on the intake side. Take the filter and press it over the end of the intake and tighten the clamp on the filter neck.



Take the 7" 12mm heat hose and press one end over the crankcase port and the other end over the intake port.



Locate the stock harness clip and plug it into the MAFS. Press the harness into the sensor until you here it snap in place.



Tighten all clamps using 8mm nut driver. The short ram is now fully installed and ready to go.



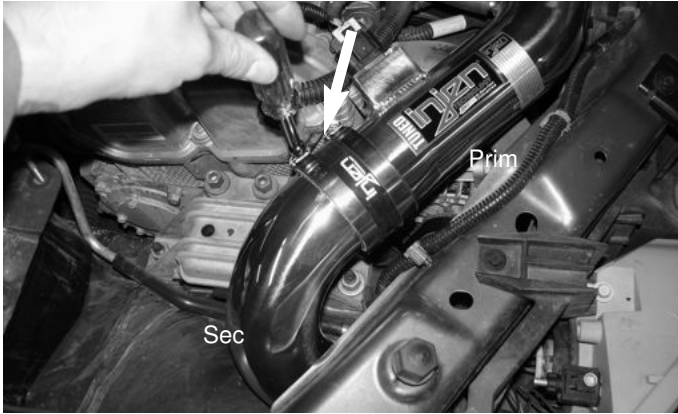
To convert your intake system into a cold air intake take the 3" straight hose and press it over the end of the primary intake. Use two clamps from the kit to place them over the hose and tighten the clamp on the intake.



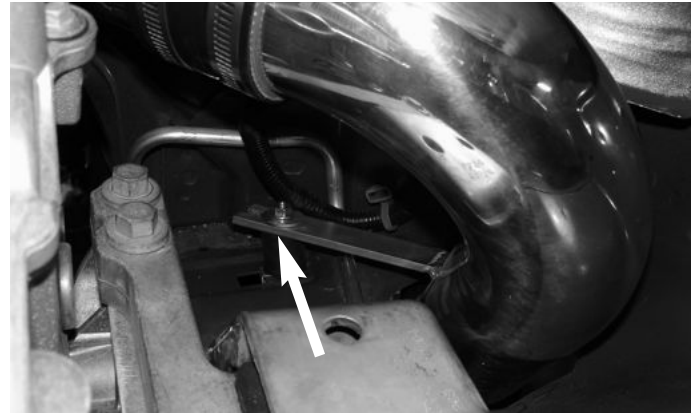
Take t the secondary intake and insert it into the resonator opening.



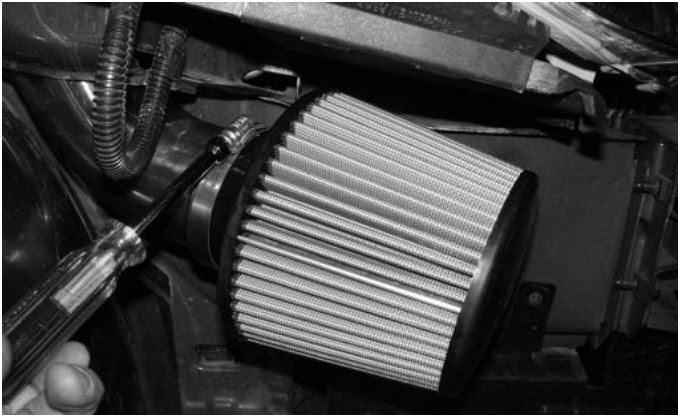
Once the secondary intake has been inserted into the resonator opening align the bracket to the vibra-mount stud.



While the intake bracket is located on the vibra-mount stud press the top end of the secondary intake into the 3" hose on the primary intake. Once both intakes have been aligned to each other continue to semi-tighten the clamp.



Take the 6mm flange nut and fender washer and secure the intake bracket to the vibra-mount stud.



Press the Injen filter over the end of the secondary intake. Press the filter over the intake until it butts up against the stops built inside of the filter neck. Do not over run the intake end past the filter stop, this may obstruct the air flow if incorrectly installed.



Once the cold air intake has been installed align the entire intake for best possible fit. Make sure there is no rubbing parts along the length of the intake then continue to tighten all nuts, bolts and clamps. Periodically, check the alignment to avoid any damage to the intake system.

1. Upon completion of the installation, reconnect the negative battery terminal before you start the engine.
2. Align the entire intake system for the best possible fit. Once the intake has been properly fitted continue to tighten all nuts, bolts and clamps.
3. Periodically, recheck the alignment of the intake system and make sure there is proper clearance around and along the length of the intake. Failure to follow proper maintenance procedures may cause damage to the intake and will void the warranty.
4. Start the engine and listen carefully for any odd noises, rattles and/or air leaks prior to taking it for a test drive. If any problems arise go back and check the vacuum lines, hoses and clamps that maybe causing leaks or rattles and correct the problem.
5. Check the filter for excessive dirt build up. Clean or replace the filter with an original Injen filter (can be bought on-line at "injenonline.com"). Congratulations! You have just completed the installation of the best intake system sold on the market. Enjoy the added power and performance of your new intake system.