

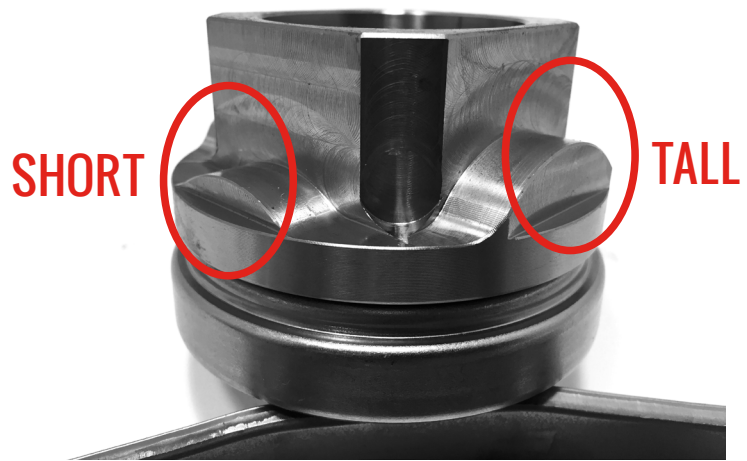


CLUTCHTECH

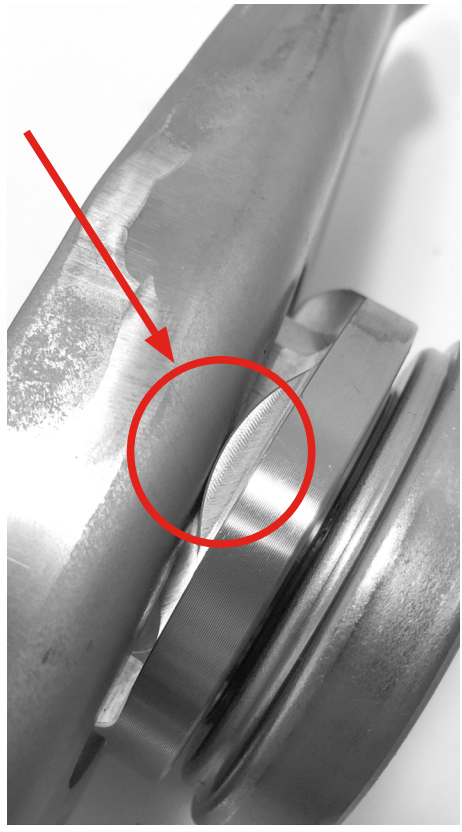
TSB-214

BMW release bearing fitment

Please note this kit includes a release bearing that has two possible fitment orientations. It is critical that this is fitted in the correct orientation in order to have the correct operation of the clutch.



For this kit it is critical to have the lowest contact position mounted against the clutch fork as illustrated below.



LEADING BRANDS

