



CLUTCHTECH



TSB - M106

In relation to ClutchPro kits with release mechanism ATFM103

Applies to following ClutchPro applications:

MITSUBISHI COLT
SMARTFORTWO

ES, LS, VRX, PLUS, RALLIART, TURBO
CABRIO 451

2006 -on
2008 -on

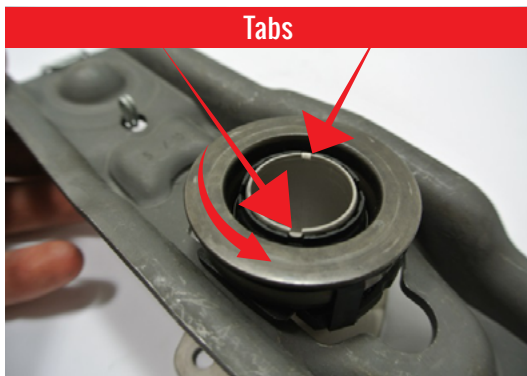
Release Mechanism Installation Preparation

It is important to grease all moving parts on the release mechanism to prevent wear and noise during operation

- 1) Remove partly assembled mechanism from packaging.



- 2) Remove bearing and carrier from the replacement snout. Rotate the snout to align the tabs/grooves in the snout/ carrier to slide them apart.



- 3) With the mechanism carefully disassembled, all of the moving components must be lightly greased as indicated below.



Grease Areas



- 4) Remove any excess grease that is not necessary.
- 5) Clean inside the bellhousing and back of crank of any grease dirt or contaminants.
- 6) Assemble the release mechanism onto the transmission and continue with the assembly of the clutch kit.

LEADING BRANDS

