



CLUTCHTECH



TSB - TB03

GM Thrust Bearing Installation

The following Technical Bulletin relates to the fitment of TB34003 Thrust Bearing.

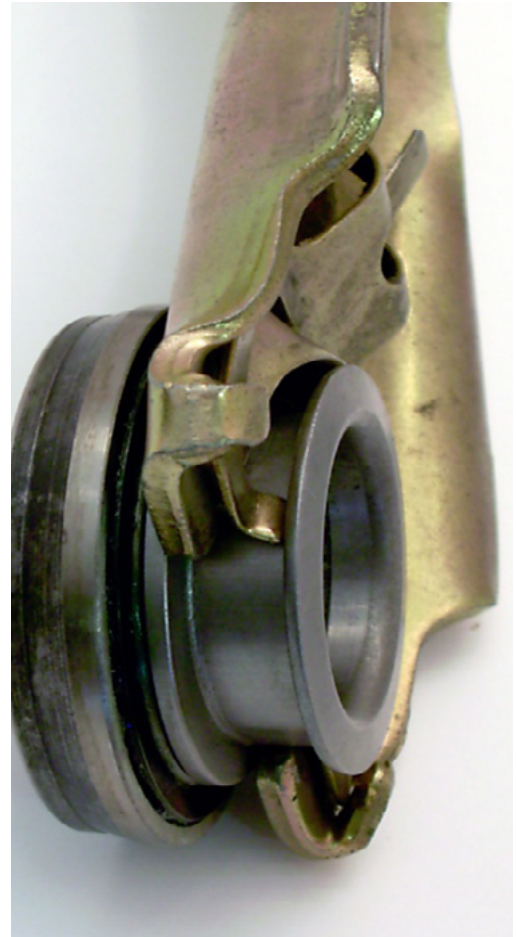
On most stamped GM clutch forks, there is only one proper method of installing the clutch release bearing.

The front of the fork and the two spring tabs must be installed between the two flanges on the release collar bearing. Refer to the pictures below for the correct installation configuration.

INCORRECT FITMENT



CORRECT FITMENT



LEADING BRANDS

