



## **Ditch Light Bracket Kit Part Number: DTC-101**

### **Toyota 2016-2022 Tacoma 2.7L/3.5L**

## **Installation Instructions**

For technical inquiries please email us at [tech@hpsperformanceproducts.com](mailto:tech@hpsperformanceproducts.com)

In the email, please include the following information for faster response:

- Year / Make / Model / Engine of your vehicle.
- If it is a fitment issue, please include pictures showing the fitment problem.
- If there are missing parts, please list the part number(s) from the bill of materials on the 2nd page.
- Optional but recommended – Your contact phone number and preferred call back time.

You can also give us a call via 626-747-9200 for tech support Monday-Friday, 9:00am-5:00pm Pacific Time.

# Bill of Materials

**Kit Number: DTC-101**

Line #	Description	Part Number	Qty
1	Left Ditch Light Bracket	DTC-101-L	1
2	Right Ditch Light Bracket	DTC-101-R	1
3	M8 x 1.25mm Thread, 30mm Long	95735A431	4
4	M8 Flat Washer 16mm OD	HW-FW8S	4



- Before installing any parts of this ditch light bracket kit, please read the instructions thoroughly.
- Verify the contents of this ditch light bracket kit before disassembling your vehicle.
- Report any defective or missing parts to HPS directly. The HPS dealer you purchased this product from might not have the replacement parts you need.
- Installation requires moderate mechanical skills. A qualified mechanic is highly recommended.
- For technical inquiries, please email us at [tech@hpsperformanceproducts.com](mailto:tech@hpsperformanceproducts.com)

## **PLEASE READ CAREFULLY BEFORE INSTALLATION!**

Install this kit with caution! Misuse of this product can damage parts of your vehicle.

***NOTE: HPS holds no responsibility for any damage that results from misuse of this product.***

## **GETTING STARTED**



1. Open the hood. On the passenger side hood hinge, use pliers to squeeze the two tabs of the plastic clip to detach the washer fluid hose from the hinge.



2. Remove the top bolt from the hood hinge as shown in the image above.



3. Install the right ditch light bracket using the provided M8 bolt and washer by hand tightening the bolt. Angle the bracket to provide clearance to remove the rear hood hinge bolt in the next step.



4. Remove the rear hood hinge bolt. Carefully rotate the bracket so that the rear ditch light bracket hole lines up with the rear hood hinge mounting hole. Secure the bracket with the provided M8 bolt and washer by hand tightening the bolt.



5. The ditch light brackets have slotted mounting holes to adjust for clearance. When aligning the bracket, the hood hinges, and the hood, make sure everything is aligned correctly.



6. Repeat steps 2-5 on the driver's side. Once the brackets are installed, ditch lights can now be installed.

**NOTE: Ditch lights are not included with this kit.**

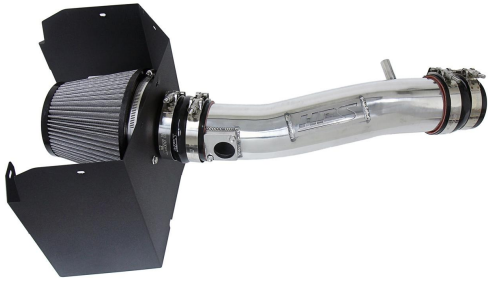
## **FINAL STEPS**

Make sure all bolts and parts are tightened and secured in place. Conduct a final check for alignment of the hood and clearance around the brackets.

Periodically, recheck the alignment of the brackets and make sure there is proper clearance around and along the length of the bracket. Failure to follow proper maintenance procedures may cause damage and void your warranty.



**Also available for Toyota 2016-2022 Tacoma 3.5L V6**



**HPS Performance Air Intake Kit**

[Part Number 827-595](#)



**HPS Silicone Air Intake Hose Kit**

[Part Number 57-1600](#)



**HPS Silicone Radiator + Heater Coolant  
Hose Kit**

[Part Number 57-1581](#)



**HPS Performance Drop-In Air Filter**

[Part Number HPS-457290](#)

**Also available for Toyota 2005-2022 Tacoma 2.7L 4cyl**



**HPS Performance Air Intake Kit**

**[Part Number 827-169](#)**



**HPS Silicone Air Intake Hose Kit**

**[Part Number 57-1827](#)**



**HPS Silicone Radiator + Heater Coolant  
Hose Kit**

**[Part Number 57-1640](#)**



**HPS Performance Magnetic Oil Drain Plug**

**[Part Number MDP-M12x125](#)**

**Contact an authorized HPS Performance dealer or  
visit us at [hspperformanceproducts.com](https://hspperformanceproducts.com) for more details**