



# INSTALLATION INSTRUCTIONS

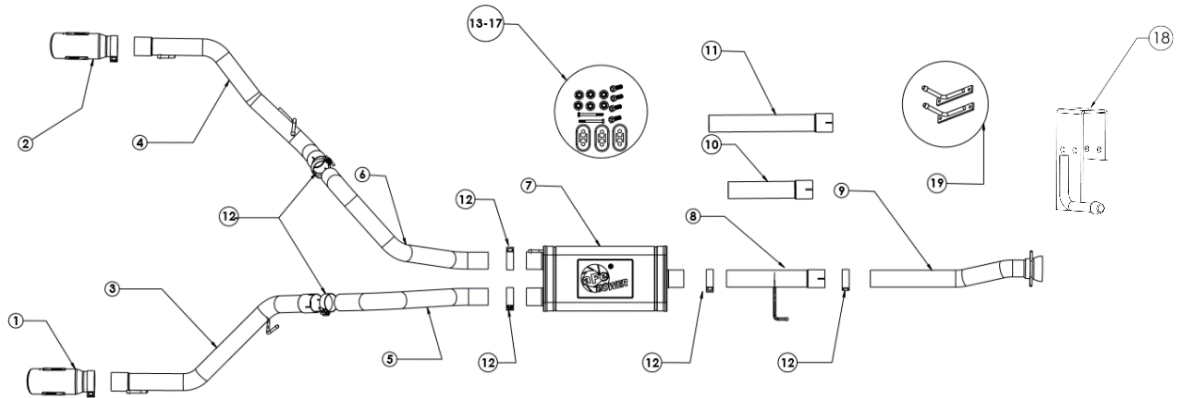
Cat-Back Exhaust

MAKE: Ford  
 MODEL: F-150  
 YEAR: 2021  
 ENGINE: V6-2.7L(tt)&3.5L(tt)/ V8-5.0L

49-33127-B

49-33127-P

NOTE: Fits CC/SB (145"WB), CC/LB (156.8"WB),  
 EC/SB (145" WB), and EC/LB (163.7" WB)



Item	Description	Part Number	Quantity
1	EXH Tip 3-1/2 In x 4-1/2 Out x 12L Black	49T35451-B12	1
1	EXH Tip 3-1/2 In x 4-1/2 Out x 12L Polished	49T35451-P12	1
2	EXH Tip 3-1/2 In x 4-1/2 Out x 12L Black	49T35452-B12	1
2	EXH Tip 3-1/2 In x 4-1/2 Out x 12L Polished	49T35452-P12	1
3	Right Tail-Pipe	05-245120	1
4	Left Tail-Pipe	05-245150	1
5	Right Over-axle Tube	05-245119	1
6	Left Over-axle Tube	05-245086	1
7	Muffler Assembly	05-245084	1
8	Mid-Pipe	05-245116	1
9	Front Pipe	05-245118	1
10	Extension Pipe #1: 3" Dia. 15" L	05-245082	1
11	Extension Pipe #2: 3" Dia. 22" L	05-245083	1
12	Clamp, Band: 3"	05-41055	6
13	Nut, Hex Nylon Lock M8 x 1.25	03-50244	4
14	Bolt, M8 x 1.25 x 25	03-50442	4
15	Nut, Hex Flange, 5/16"-18	03-50373	2
16	Screw, 5/16"-18 Thread x 3-1/4" Long	03-50461	2
17	Exhaust Isolation Mount	05-46050	3
18	Tail-Pipe Bracket	05-46143	1
19	Tip Bracket	05-46483	2

aFe POWER recommends professional installation on this product. Thoroughly inspect the aFe POWER exhaust system to make sure there is no damage from shipping (if damage is noted, immediately contact aFe POWER customer service). Allow time for your vehicle to cool down prior to installation. When working on your vehicle proceed with caution. Wear protective safety equipment; eye goggles and gloves to ensure a safe installation.

Install band clamps to proper torque specifications of 40-45 ft-lb.





# INSTALLATION INSTRUCTIONS

Cat-Back Exhaust

MAKE: Ford  
MODEL: F-150  
YEAR: 2021  
ENGINE: V6-2.7L(tt)&3.5L(tt)/ V8-5.0L

49-33127-B  
49-33127-P

**NOTE: Fits CC/SB (145"WB), CC/LB (156.8"WB), EC/SB (145" WB), and EC/LB (163.7" WB)**

1. **(Read instructions prior to installation.)** It is recommended to not fully tighten the exhaust until it has been fully installed. Leave loose for adjustability.
2. Secure vehicle on jack stands (refer to your manual for specified jack stand positions).
3. For faster installation, spread out the parts of the exhaust alongside your vehicle as shown in the diagram above.
4. Secure the stock exhaust with jack/stands. Remove the O.E. Exhaust up to the flange joint at the Y-pipe.
5. Install the front pipe, mid-pipe assembly, and extension tube (if necessary) onto the muffler assembly.

**Note: Use table for guide on extension pipes**

Cab Configuration	Bed Configuration	Wheelbase	Extension Pipe?
Crew Cab	Short Bed	145"	NO
Crew Cab	Long Bed	156.8"	YES (15" Extension Pipe)
Extended Cab	Short Bed	145"	NO
Extended Cab	Long Bed	163.7"	YES (22" Extension Pipe)

6. Slide the rear hanger of the muffler assembly into the isolation mount and push all the way back until you have the clearance to slide the assembly into place.
7. Using the O.E. flange bolts, connect the flanges together and do not fully tighten.
8. Install the right passenger side over-axle and tail-pipe using the provided hanger brackets as shown in **FIG 2 & FIG 3**.
9. Next install the left driver side over-axle, but do not fully tighten.
10. Install the hanger bracket included with the kit. As Shown in **FIG 2 & FIG 3**. Fully tighten the hanger bracket to the frame using the correct hardware provided.



11. Install the left driver side tail-pipe and the provided hanger bracket as shown in **FIG 3**, do not fully tighten.
12. Install both tips onto the tail-pipes and adjust the tips to the desired location and orientation.
13. Ensure that all the components of the aFe POWER exhaust system are aligned and are at a safe clearance from all wires, hoses, brake lines, body parts, and tires.
14. Start from the front of the aFe POWER exhaust system and evenly tighten all clamps and fasteners.
15. Start the vehicle and check for any leaks. If any leaks are found, determine cause and repair as necessary.
16. Remove vehicle from jacks stands.
17. It is recommended to re-tighten all clamps and hardware after 50-100 miles.