



# **Performance Charge Pipe Kit (Cold Side)**

**Part Number: 17-154**

**Ford 2011-2016 F-250 6.7L Powerstroke Diesel**  
**Ford 2011-2016 F-350 6.7L Powerstroke Diesel**  
**Ford 2011-2016 F-450 6.7L Powerstroke Diesel**  
**Ford 2011-2016 F-550 6.7L Powerstroke Diesel**

## **Installation Instructions**

For technical inquiries please email us at [tech@hpsperformance.com](mailto:tech@hpsperformance.com)

In the email, please include the following information for faster response:

- Year / Make / Model / Engine of your vehicle.
- If it is a fitment issue, please include pictures showing the fitment problem.
- If there are missing parts, please list the part number(s) from the bill of materials on the 2nd page.
- Optional but recommended – Your contact phone number and preferred call back time.

You can also give us a call via 626-747-9200 for tech support Monday-Friday, 9:00am-5:00pm Pacific Time.

# Bill of Materials

## Kit Number: 17-154

Line #	Description	Part Number	Qty
1	Cold Side Charge Pipe	529-879	1
2	Charge Hose	CH-FDPS-67-1116	1
3	Spring Loaded T-bolt Clamp, 83mm-91mm	SLTC-325	2
4	O-Ring	805MMB70	1

- Before installing any parts of this charge pipe kit, please read the instructions thoroughly.
- Verify the contents of this charge pipe kit before disassembling your vehicle.
- DO NOT INSTALL IF ANY PARTS ARE MISSING OR DAMAGED. CONTACT [tech@hpsperformance.com](mailto:tech@hpsperformance.com) IMMEDIATELY. WE ARE NOT RESPONSIBLE FOR ANY DAMAGE CAUSED DUE TO IMPROPER INSTALLATION.
- Installation requires moderate mechanical skills. A qualified mechanic is highly recommended.
- Do not attempt to install the charge pipe kit while the engine is hot.
- This installation may require removal of coolant lines that may be hot.
- For technical inquiries, please email us at [tech@hpsperformance.com](mailto:tech@hpsperformance.com)

## **PLEASE READ CAREFULLY BEFORE INSTALLATION!**

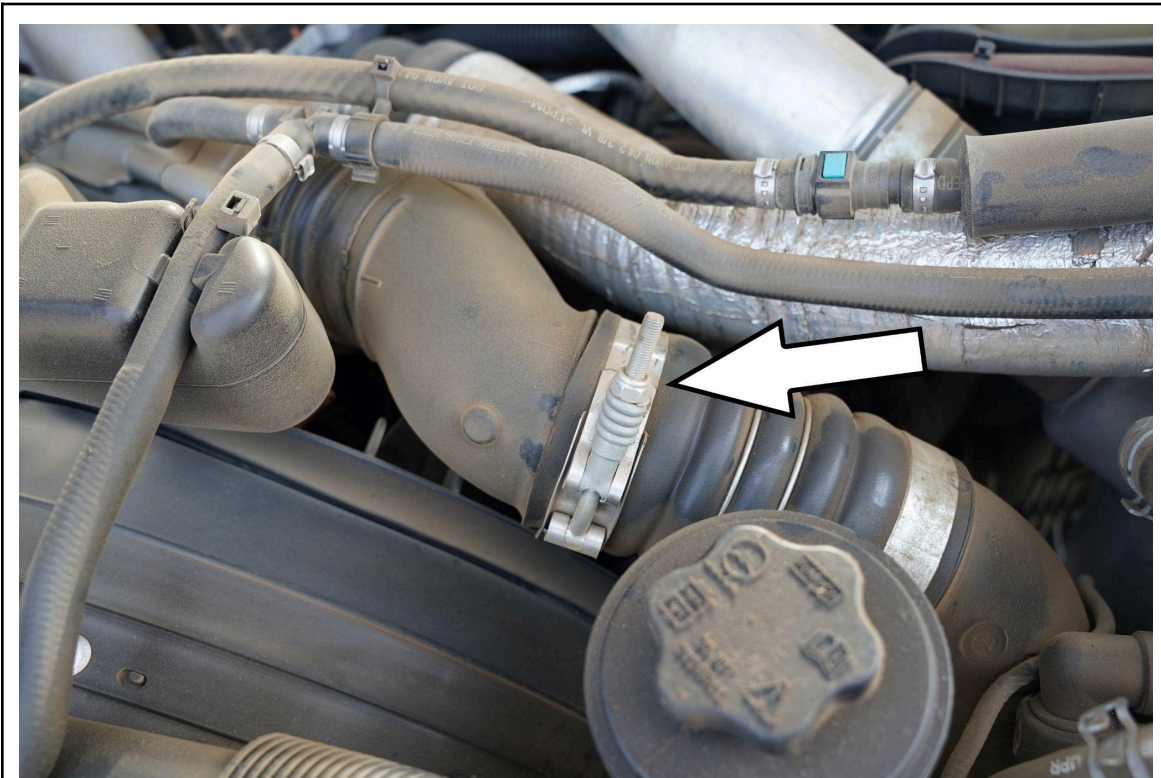
This installation is not for the novice customer. Install this product with EXTREME caution! Misuse of this product can destroy your engine! If you are not mechanically inclined, please have a professional automotive mechanic install this kit.

***NOTE: HPS holds no responsibility for any engine damage that results from misuse of this product.***

## **GETTING STARTED**

1. Turn the ignition OFF and disconnect both of the vehicle's battery's negative cables . If the engine has run within the past two hours let it cool down.

NOTE: Disconnecting the negative battery cable erases pre-programmed electronic memories. Write down all memory settings before disconnecting the negative battery cable. Some radios will require an anti-theft code to be entered after the battery is reconnected. The anti-theft code is typically supplied with your owner's manual. In the event your vehicle's anti-theft code cannot be recovered, contact an authorized dealership to obtain your vehicle's anti-theft code. We also highly recommend NOT discarding any stock parts after the installation.

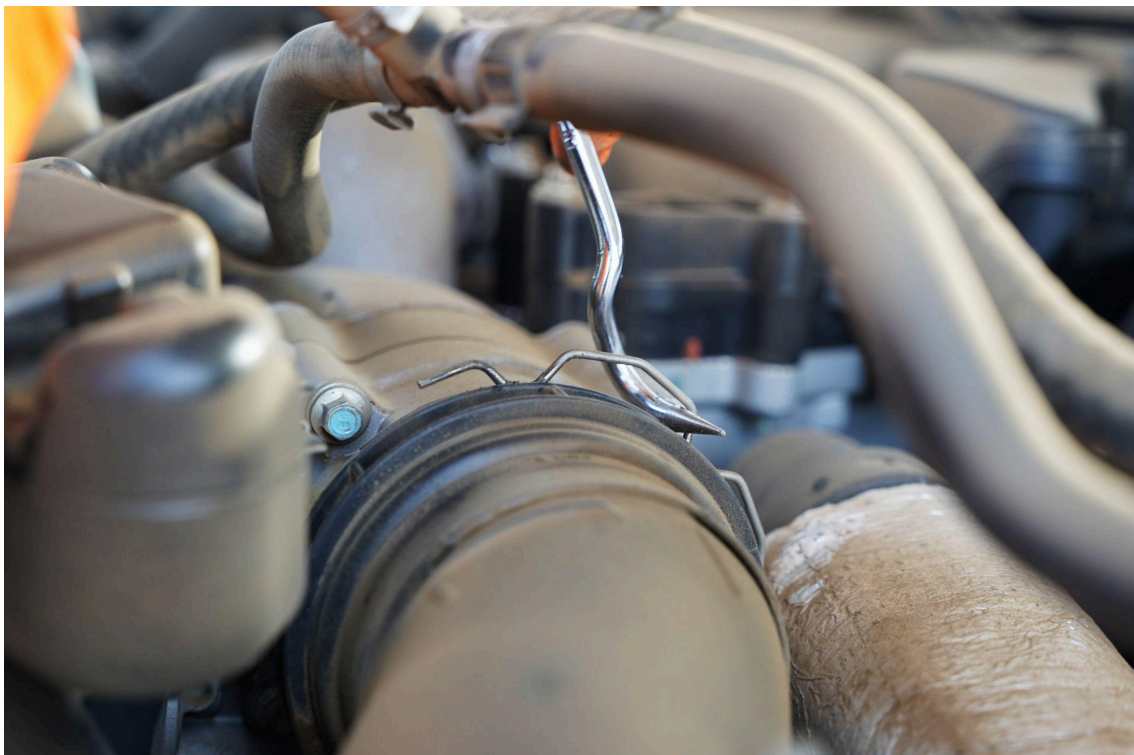


2. Loosen the hose clamp securing the factory charge hose to the upper plastic quick-connect pipe.





3. Unclip the coolant hose from the resonator mount in order to gain access to the upper quick-connect pipe.



4. Lift to release the retaining clip to disconnect the quick-connect fitting at the throttle body.



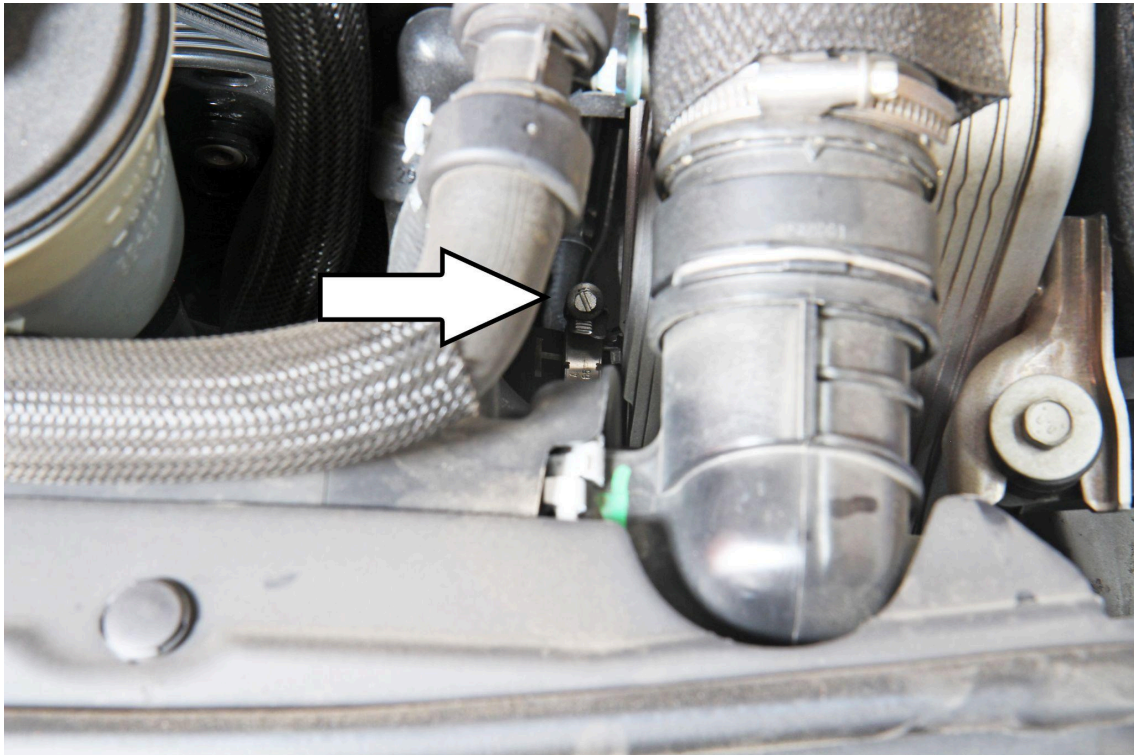


5. Disconnect the factory charge hose from the plastic quick-connect pipe.

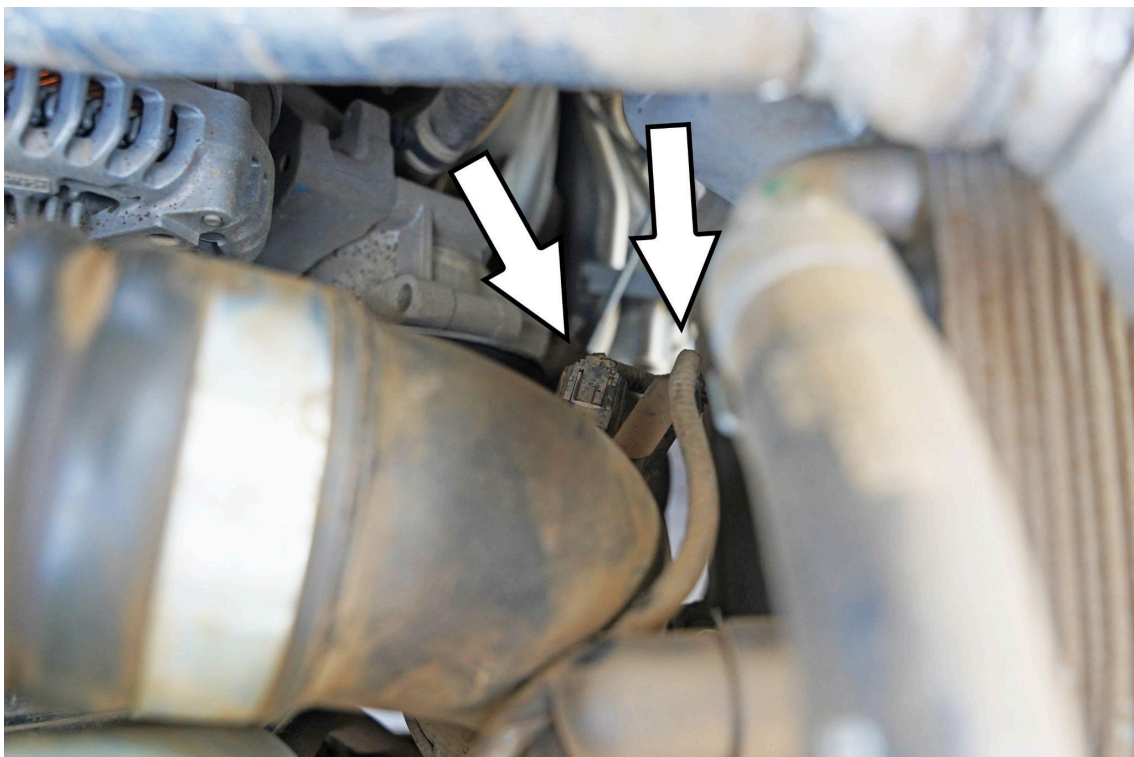


6. Remove the factory quick-connect pipe from the vehicle.





7. Loosen the hose clamp securing the factory charge hose located at the intercooler.



8. Disconnect and unclip the temperature sensor and electrical harness from the factory charge hose.





9. Remove the factory charge hose from the vehicle.



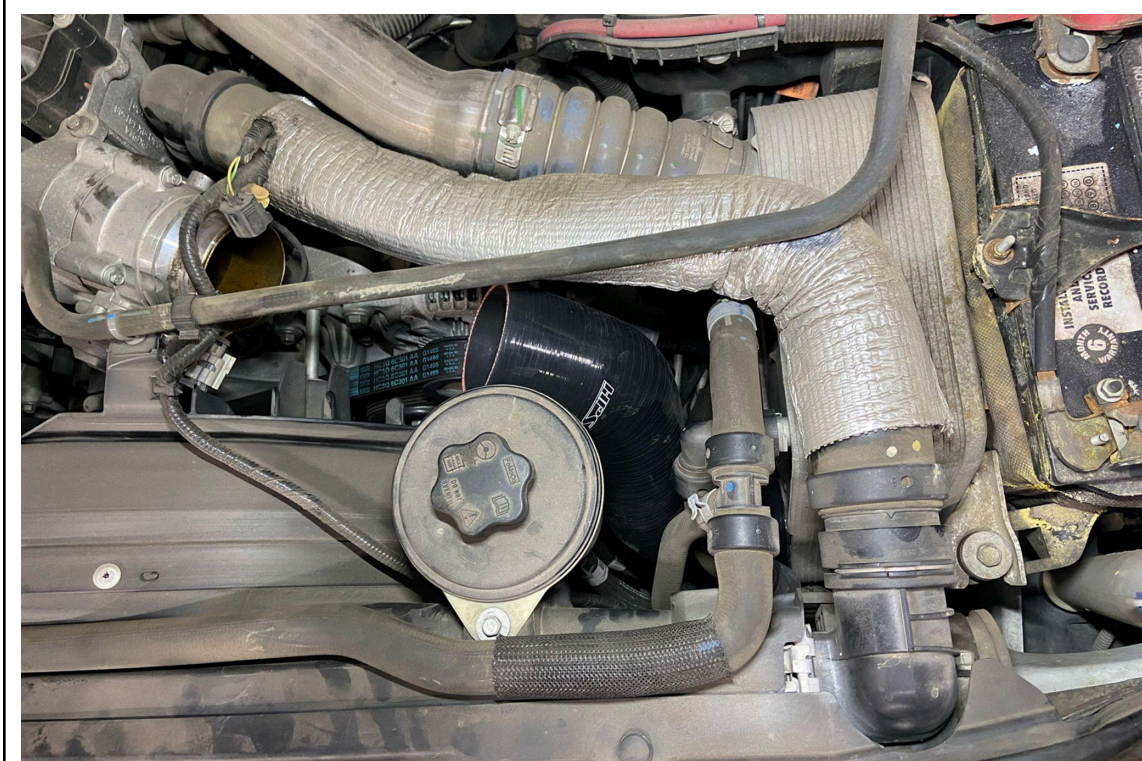
10. Place the provided O-ring into the groove on the HPS charge pipe.

**TIP:** Lubricate the O-ring with oil for a smoother installation.



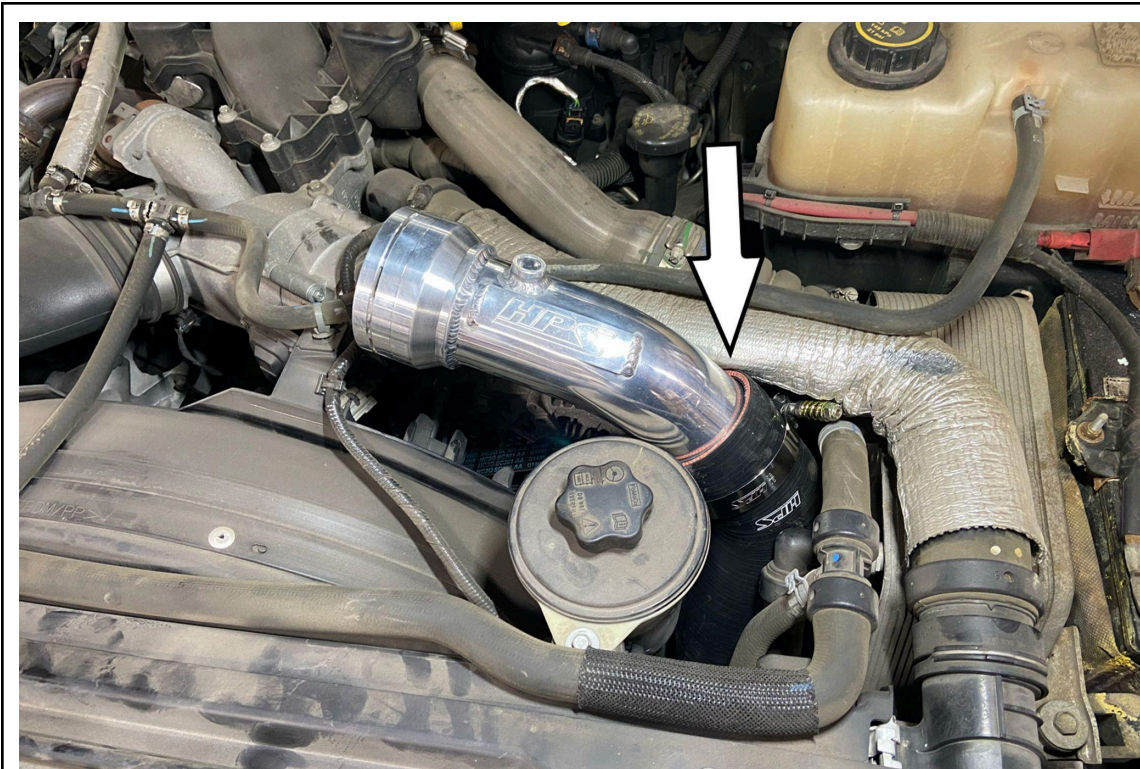


11. Slip provided spring loaded T-bolt clamp onto the 90 degree end of the HPS charge hose.

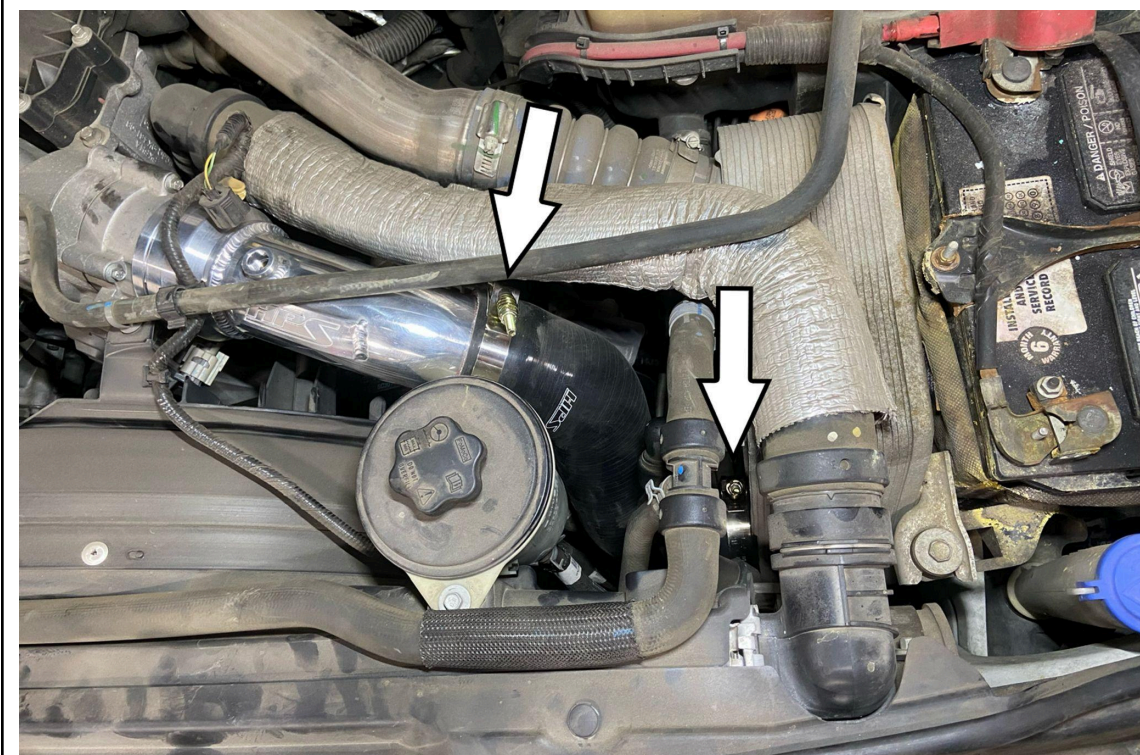


12. Loosely install the HPS charge hose onto the intercooler. Do not tighten the spring loaded T-bolt clamp at this point.



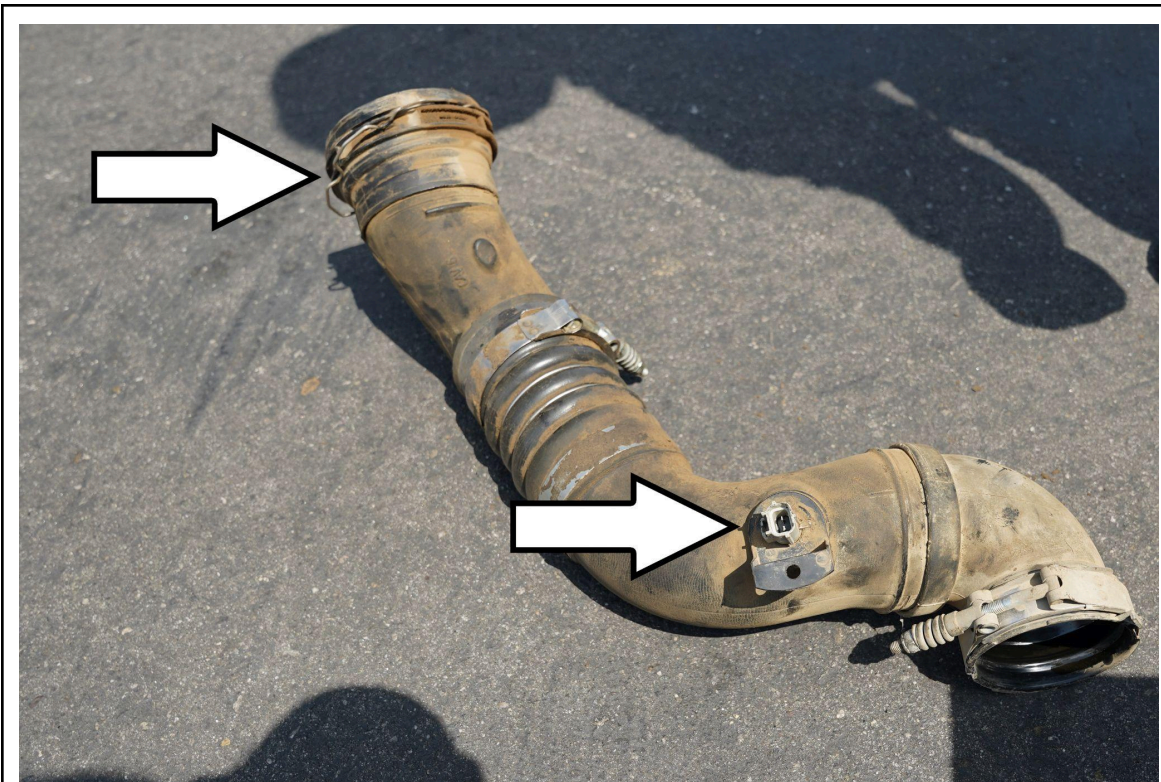


13. Slip the other provided spring loaded T-bolt clamp onto the other end of the HPS charge hose. Insert the HPS charge pipe into the couple first, then onto the throttle body.

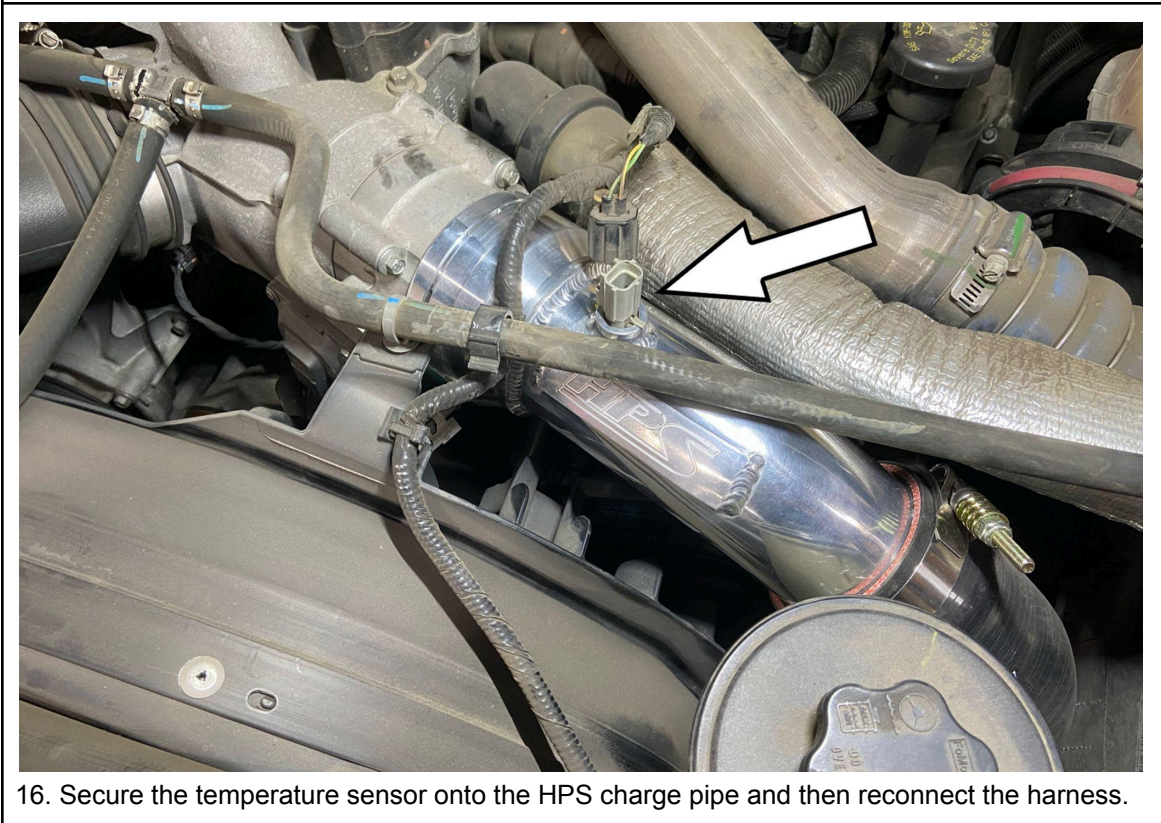


14. Position the charge pipe and the charge hose so that there is proper clearance around and along the product. Then tighten both spring loaded T-bolt clamps.



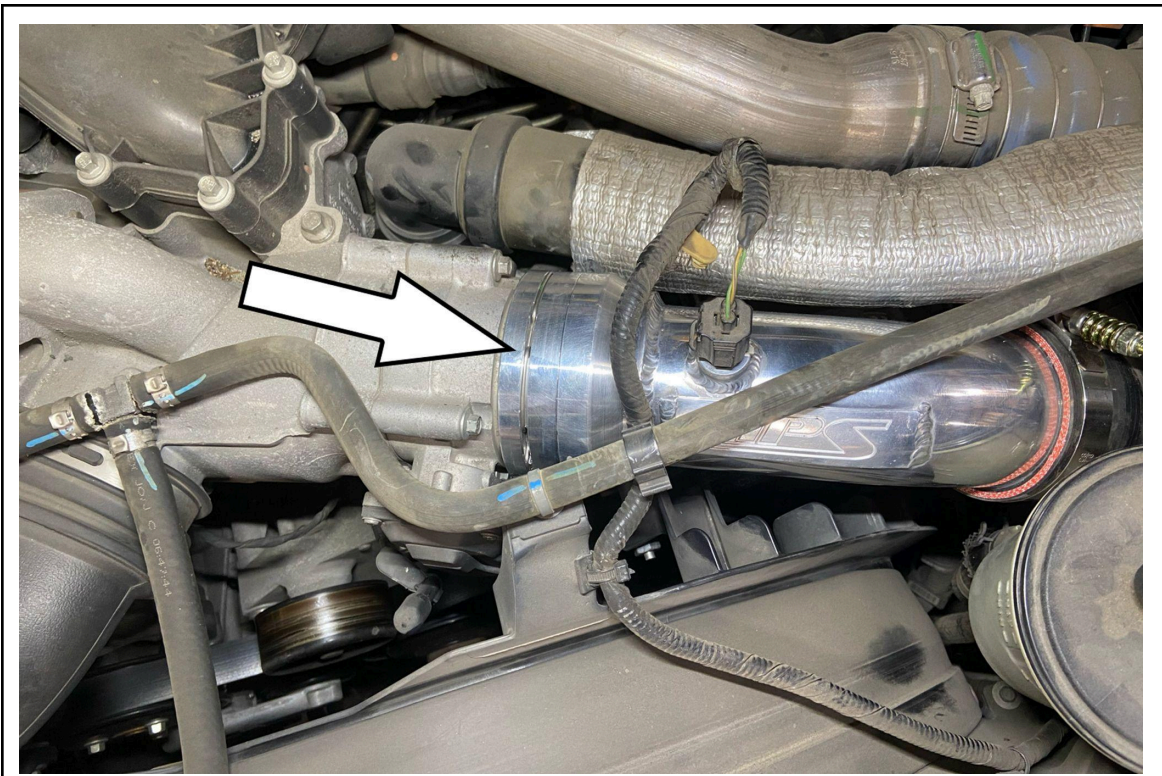


15. Remove the temperature sensor and the retaining clip from the factory quick-connect pipe and charge hose.



16. Secure the temperature sensor onto the HPS charge pipe and then reconnect the harness.





17. Secure the factory retaining clip onto the HPS charge pipe.

## **FINAL STEPS**

Once the charge pipe has been positioned, tighten all of the clamps and secure all of the parts.

Upon completion of the installation, reconnect the negative battery terminal before you start the engine. Double check to make sure everything is tight and properly positioned before starting the vehicle.

Start the engine. Let the car idle for 3 minutes. Perform a final inspection before driving. Listen carefully for any odd noises, rattles and/or air leaks prior to taking it for a test drive. If any problems arise go back and check the vacuum lines, hoses and clamps that may be causing leaks or rattles and correct the problem.

Periodically, recheck the alignment of the charge pipe and make sure there is proper clearance around and along the length of the charge pipe. Failure to follow proper maintenance procedures may cause damage to the charge pipe and will void the warranty.

