

Rally Armor Subaru Forester – 2003-2008 Mud flap Mounting Instructions*

*Visit <http://www.rallyarmor.com> for a better view of the photos.

Your mud flap set contains 4 flaps total *2 front and *2 rear (larger sized in comparison to the fronts)
Your mounting hardware has been inspected and checked at our facilities. It consists of:

10 Plastic Clips.....	(Item PolCl)
12 Washers.....	(Item FenWash)
8 Short Stainless Steel Screws.....	(Item 1SS)
2 Long Stainless Steel Screws.....	(Item 1.5SS)
2 Spacers.....	(Item 1AngSP)

Recommended tools:

Phillips screwdriver (offset or short) - Flat head screwdriver - 8mm wrench

Cautionary Note: The hardware is quite strong and self-threading but over tightening the clips is not recommended. Rally Armor recommends professional installation.

Front Flap Installation:

Step 1: Turn steering wheel towards the side of the vehicle you are working on in order to allow access to the wheel well area.

Step 2: Using a Phillips screwdriver:

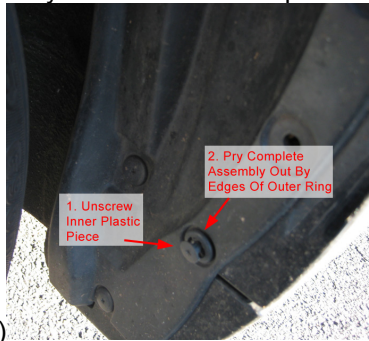
A) Remove the following clips from the front wheel well liner (see fig. A).

Cautionary Note: Be careful **not** to rip the wheel well plastic. It tears easily. Pull back slowly!

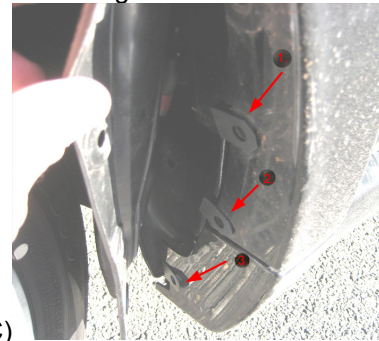
B) Remove by prying entire clip assembly out from the outer portion as seen in fig. B.



A)



B)



C)

Step 3: Place 3 plastic clips (Item PolCl) over the factory mounting holes as in fig. C:

Step 4: Replace liner and original clips #1 and #4.

Step 5: Place a washer (Item FenWash) on innermost mount of the logo less side of the flap then hand thread a short screw (Item 1SS) into the clip to start and continue tightening just enough to hold mud flap in place. Do the same for the other 2 mounting points then adjust flap based on curvature of the area.

TIP: Do not fully tighten screws. Align the flap so that it is perpendicular to the ground by tugging slightly with pressure on top (or bottom) of the flap in (fig. D). Walk away from the vehicle to adjust as needed.



D)



E)

Step 6: Fully tighten all screws (Item 1SS) as in figure E.

Rear Mud Flap Installation: **Removal of the rear tires may aid in installation. Alternatively, jacking up the rear of the vehicle allows access to the inner wheel well area thus avoiding removal of rear tires.**

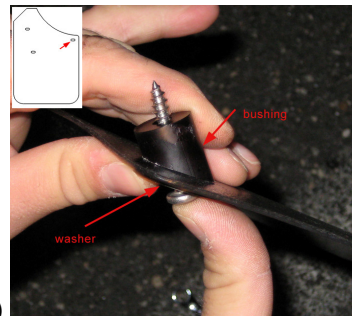
Step 1: Using an 8mm wrench, remove the lower bolt from the rear area but do not discard as it will be reused (see figure F).



F)



G)



H)

Step 2: Place two clips (Item PolCI) on the inner wheel well and outer bumper area as shown in figure G.



I)



J)



K)

Step 3: Place washer first, then place a long screw (Item 2SS) on logo less side of the flap.

A) On the logo side of the flap, place angled spacer (Item 1AngSP) on the innermost mounting point.

TIP: The Rally Armor logo side faces the rear of the vehicle.

B) Hand thread the long screw (Item 2SS) into the innermost clip.

TIP: Loosely threading the mount will allow you to align the mud flap with the two outer mounting points. For some, loosely hand threading the outer points first then bolt the inner point may be easier depending on access to the rear inner mounting point. The flexibility of the flap allows for this.

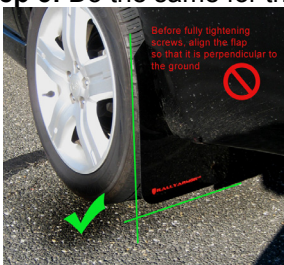
Cautionary Note: When working on the passenger side of the vehicle, be sure to confirm any clearance issues with the fuel area when fully tightening as shown in figure K.

Step 4: Hand thread the two outermost points using a washer then a short screw (Item 1SS) for the topmost mount and the **original bolt** with a washer (Item FenWash) for the lower mount.

As with the front set, before fully tightening screws, walk away from the vehicle and align the mud flap so that it is perpendicular to the ground. This is achieved by tugging with pressure on the top (or bottom) portion of the flap, walking away from the vehicle to view, and bolting down when complete (fig. L).

Cautionary Note: The hardware is **quite strong and self-threading** but overtightening the clips beyond their limit is **not recommended** on any of the hardware.

Step 5: Do the same for the other side of the vehicle to complete the installation.



L)



M)