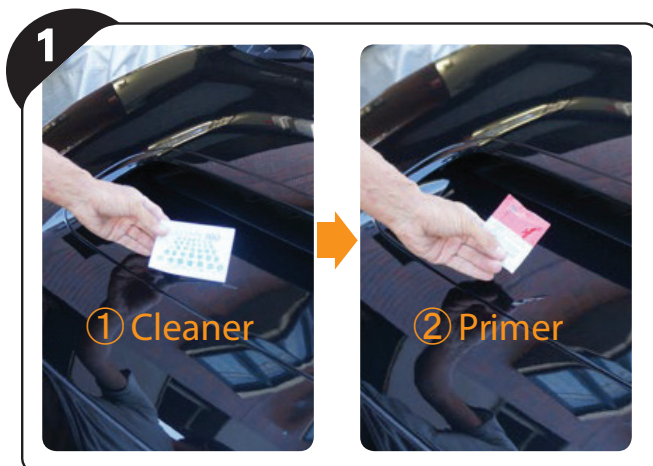


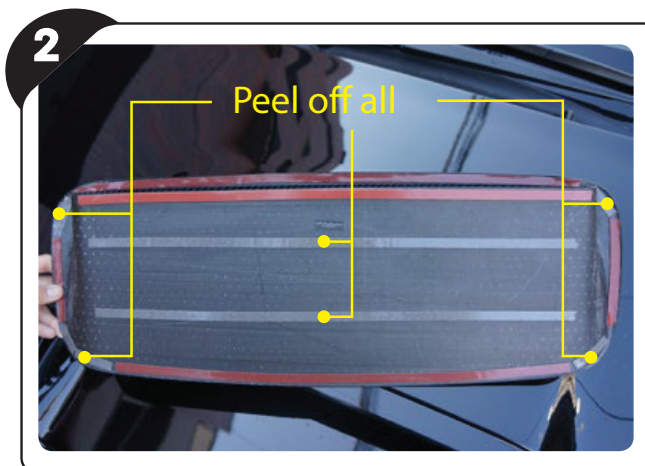
GT Dry Carbon Installation

* Images are for instructional purposes.

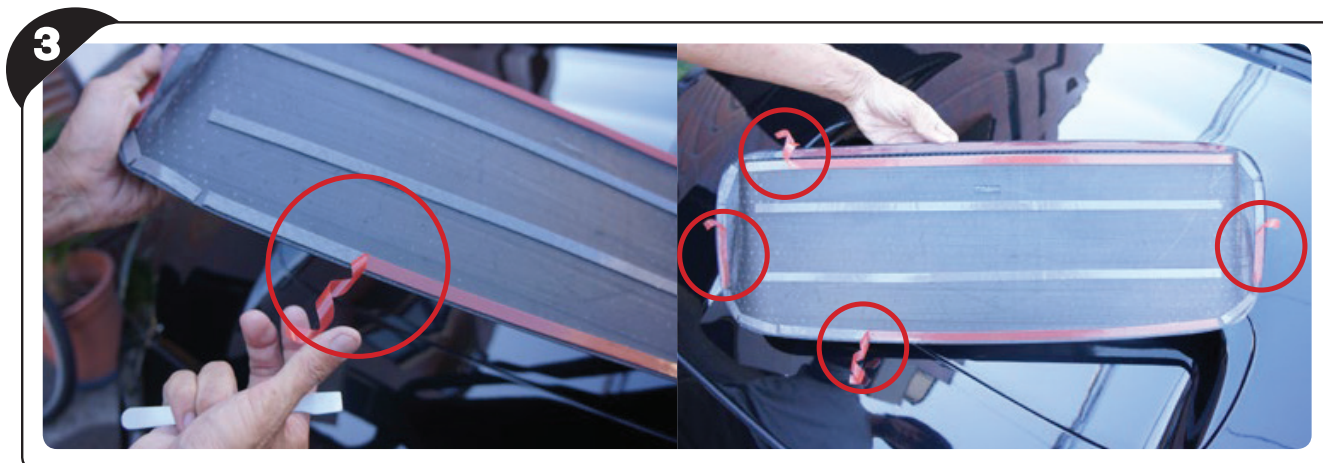


Included: Cleaner and Primer

Before installation wipe off the area with cleaning pad. Then wipe area with primer pad to help set the carbon piece.

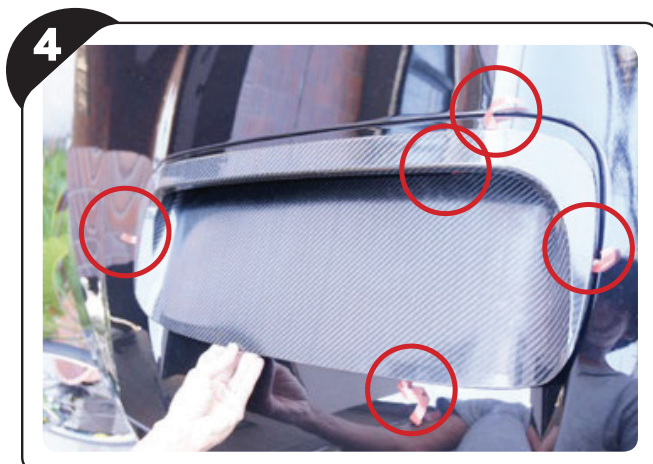


Peel the film off of the mounting tape from only the corners and the center surface area (if applicable).



Peel a small section of film off of the tape from the sides and then fold it outward so that they can be pulled after aligning the piece into position.

This allows for an accurate placement of the carbon piece before fully setting the piece down.



Carefully align into the desired position while making sure the red release film is on the outside of the piece.



Once aligned carefully push down from the top to prevent further movement and pull out the release film to secure the carbon piece.

The mounting tape takes up to 24 hours to fully dry once set.