

# Seibon Hood Installation Guide

---

**Important: professional installation by an experienced carbon fiber/fiberglass expert is STRONGLY recommended. Installation may require specialty tools and equipment. The following is only a guideline to an installation (not all installations are the same). These guidelines should NOT be used as an alternative to a professional installation.**

**Safety first. For your protection, wear a mask and goggles.**

**Working with fiberglass and carbon fiber material may cause an allergic skin reaction. We recommend wearing a long sleeve shirt and pants when performing the installation.**

**Tools recommended: Flathead screwdriver, panel popper, picks, wrench, sockets (sizes vary), a couple files, dremel, dremel bits (cutting wheel and sanding drill), and black spray paint (if you are painting the hood's mesh).**

**For safety precautions, we recommend having at least one other person help with the installation.**



**Step 1:** Start by opening the hood. Place some type of protection on the fenders so you do not scratch the car and to help prevent screws from getting into the engine bay. Carefully remove hood shock. Next remove all of the OEM clips and/or brackets that attach any covers and/or insulation to the OEM hood. You may have to remove windshield washers/nozzles, hoses, and/or clips. (Note: The number of clips, and/or brackets may vary with each vehicle.)





**Step 2:** Remove the OEM factory hood by removing the bolts/nuts attaching it to the hinge. (Note: You may have to remove any garnishes that are part of the OEM hood). You will need help from a partner to hold the hood while you are unbolting it.

After the OEM hood has been removed, place it where it will not get scratched or damaged.



**Step 3:** Perform a quick test fit of the carbon fiber hood. Your Seibon Carbon hood should already be opened and inspected upon delivery from the trucking company. Remove the wooden legs. Then with the help of a partner, install the hood by bolting down the hinges. Put the hood in a closed position and visually inspect the overall shape. This is to ensure that the product you purchased is of the correct year and model to match your vehicle. Keep notice of the lines. Final adjustments can be done later.



**Step 4:** Look at the underside of the hood. At this point you want to determine whether you can transfer your OEM heat shield onto your carbon fiber hood. The hood's style will determine if a heat shield transfer is possible. **If you cannot transfer the heat shield, proceed to step 10.** Be advised that you can purchase an aftermarket heat shield online. The use of a heat shield will help protect your carbon hood from damaged caused by engine heat.

If you decide that you do not want to transfer the heat shield to your carbon hood at this time, and that you do not want to install windshield washer nozzles, you can leave the hood on the car and proceed to Step 12. Otherwise, carefully remove the hood from the car.

**Step 5:** If a heat shield transfer is possible, proceed to remove the heat shield clips from your OEM hood. We used a panel popper to help prevent damage to the clips during their removal.





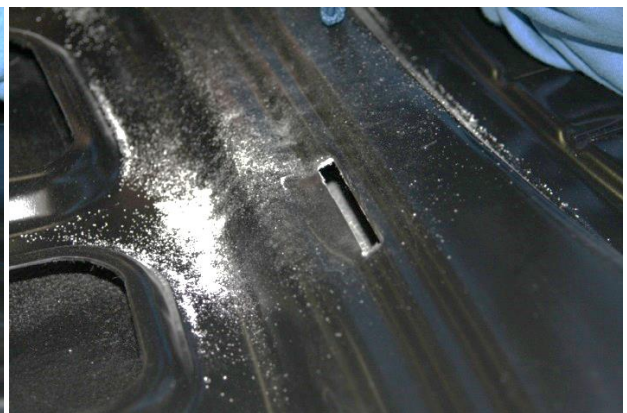
**Step 6:** Place the heat shield over your carbon hood- this will give you an idea if minor adjustments may be necessary. In this case we used a dremel to cut along the sides of the indentations that were on the carbon hood. Be careful when cutting so you do not cut through the hood.

To clean up, we used a vacuum.



**Step 7:** Puncture the indentation. Proceed to smooth the rectangle's edges.

Use a vacuum to clean any dust.





**Step 8:** Carefully tip or raise the carbon hood to find the fiberglass piece that should have fallen after the indentation was punctured.



**Step 9:** Place the OEM heat shield on the carbon hood and proceed to reinstall the heat shield clips taken off in Step 4. \*It may be necessary to enlarge the holes on the hood's skeleton. These are purposefully smaller than OEM to ensure a snug fit.\*



**Step 10:** If you want to install windshield washer nozzle, carefully remove the windshield washer hose from the OEM hood by unclipping it. You may have to twist and wiggle it around. Be sure to also remove the plastic frame that is attached to the hose (if applicable).



**Step 11:** Transfer the windshield hose and its frame over to the carbon hood. It may be necessary to enlarge the mounting points - you can do this by using a small file.



**Step 12:** In some cases, depending on the vehicle you have, you may have to/want to transfer your OEM striker onto your new carbon fiber hood. To do this, simply unbolt the striker and screw it onto the carbon hood.

With the help of a partner, install the Seibon Carbon hood by reattaching the nuts and bolts at the hinges.

If it looks like the gap on one side is bigger than the other, loosen and re-tighten the bolts on the hinge while pushing the hood towards the side with the bigger gap. You may need to adjust the hinge a few times to achieve a perfect fit. If the hood seems to sit higher/lower than the fender, you can adjust the bump stops to achieve proper fitment. If your hood is still not sitting perfectly, you can adjust the striker/latch. But if you are not comfortable making further tweaks, stop here and go to a professional installer.

The use and/or installation of shocks, dampers, struts, and springs that originally mounted to your hood are strongly discouraged. Carbon products are lighter in weight so installing these items may prevent your hood from closing and may cause product to crack due to pressure. Your best bet would be to use a hood prop or to make a kick stand similar to what older vehicles use.





**Step 13:** Before closing the hood, make sure the fenders are clear and that there are no tools left in the engine bay. Carefully close the hood. Slamming the hood may cause it to crack. Check alignment of the hood and latch. If satisfactory, the hood installation is complete.

If you decide to install the hood shock (**not recommended**), be sure to close the hood by pushing down on the side where the shock is located. Otherwise you risk cracking or warping the hood by putting too much pressure on the shock.



**Important notes:**

\* Some filing may be necessary to enlarge the windshield nozzle holes. These are intentionally made smaller than usual so that you can adjust for a snug fit. Remember, you can always enlarge a small hole, but you cannot make a big hole smaller. So start out small and work your way out if necessary.

\* In some cases, you may be able to use the OEM heat shield on the Seibon Carbon hood, depending on the hood style.

\* Some hoods may require removal and attachment of the factory striker from/to the hood.

\* For your own safety, the use of hood pins is required.