

#TL100190

INSTALLATION MANUAL

CI100041

APR MQB Plastic Open Intake

APR



Notes:

These instructions were written for a North American specification Mk7 GLI, but other models, like the Mk7 GTI, Golf R. and Audi A3/S3 are similar.

When disassembling the car, be sure to keep all fasteners so they can be reused. It is recommend that you get some kind of compartmented tray to organize the fasteners, such as a fishing tackle box or several large ice cube trays. Fasteners that are not reused for reinstallation are noted in the instructions. All directions used in this manual (right, left, front, etc.) are based on if you were sitting in the drivers seat of the car.

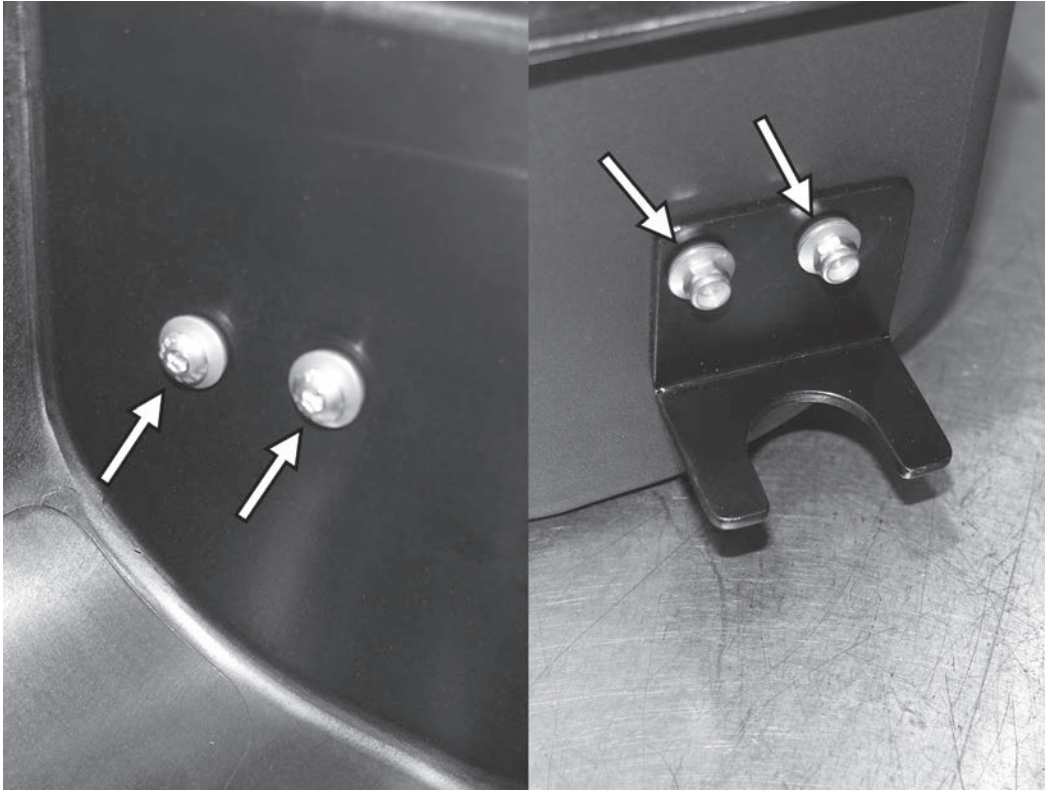
These instructions assume that you have basic mechanical skills and several varieties of basic hand tools in order to install the kit. If you have any questions about the install, feel free to contact your APR representative.



WWW.GOAPR.COM

4800 US HWY 280 West Opelika Alabama 36801

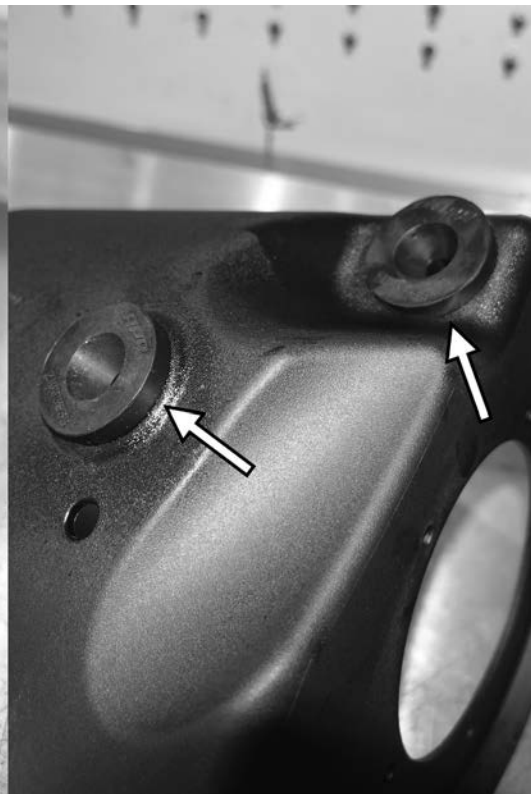
TL100190

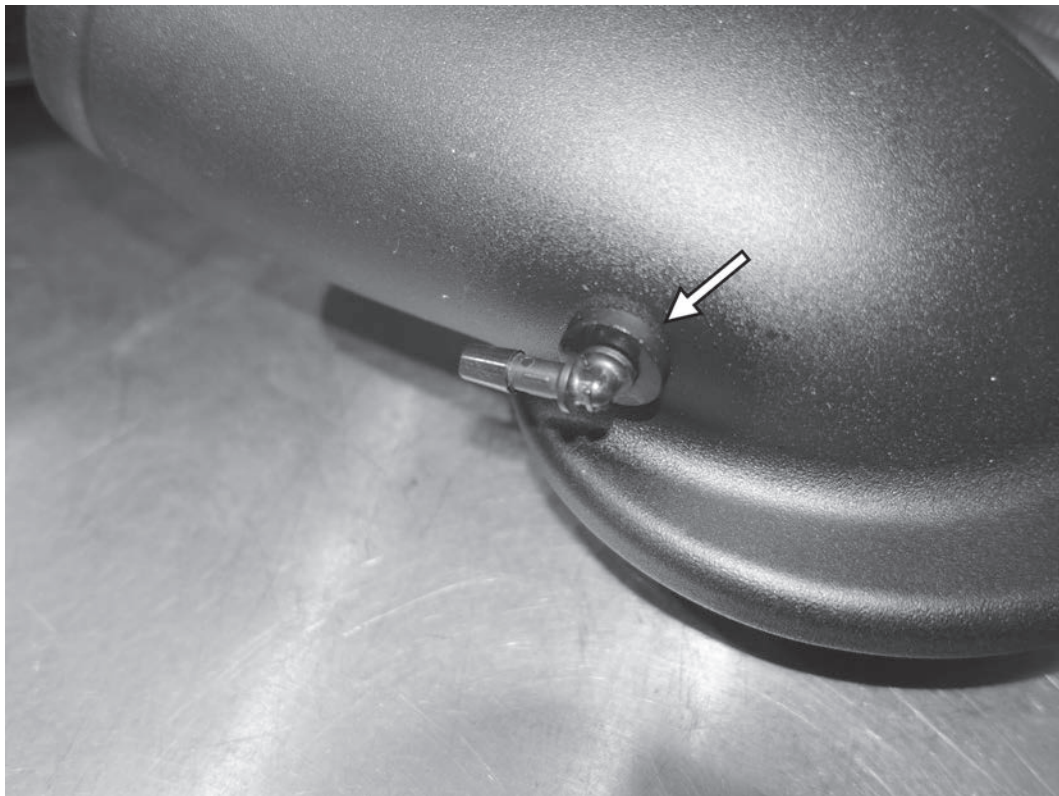


1) The APR airbox assembly must first be built. Begin by attaching the included bracket to the side of the APR airbox with the two holes. Install the two longer 3mm allen screws from the inside of the airbox with a rubber washer. Then install the bracket as shown and secure the bracket with two more rubber washers and the two 8mm nuts. Tighten the two screws while holding the nuts to 28 in-lbs (3.1 Nm).

APR

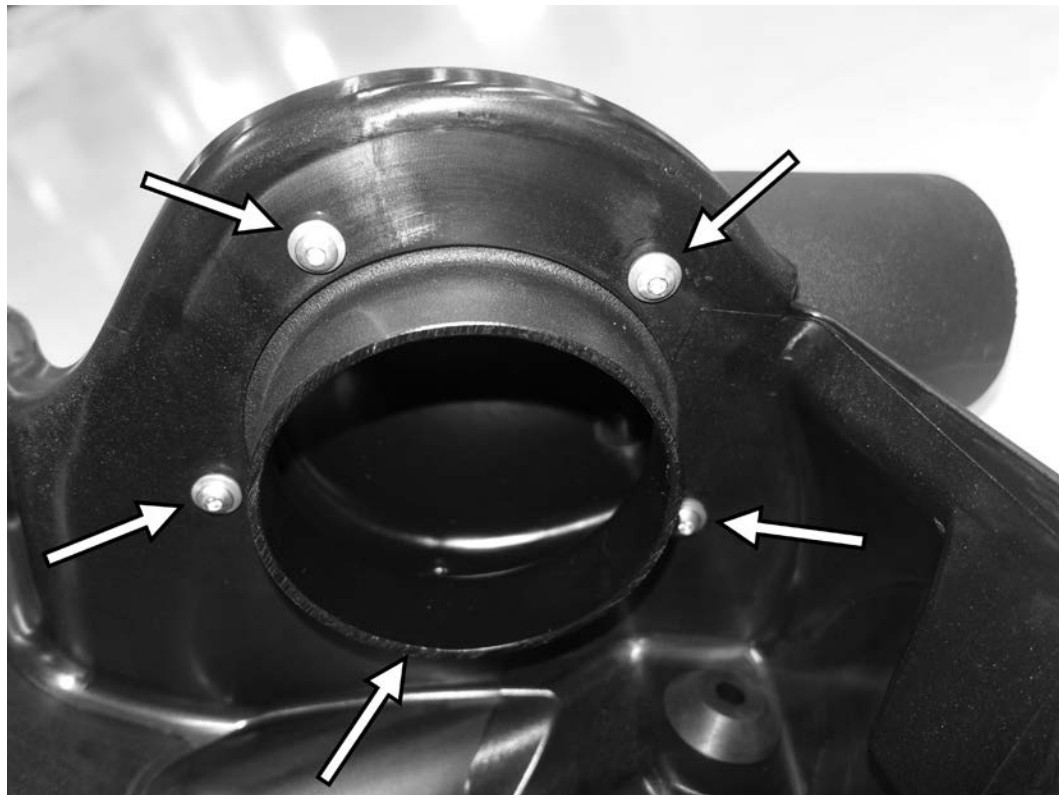
2) Using some lubricant that will not leave a residue (like foaming glass cleaner or soapy water), install the three rubber grommets as shown. Install one onto the previously installed bracket and two into the bottom of the APR airbox.



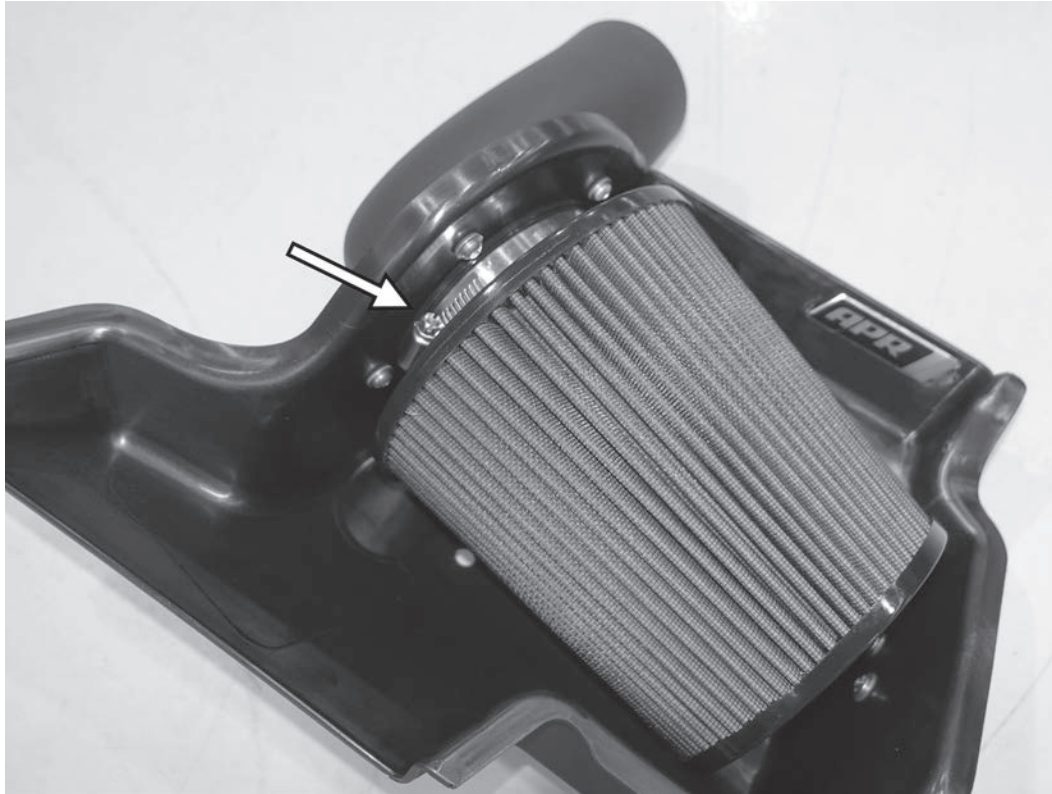


3) Using a lubricant, install the supplied rubber grommet into the side of the airbox outlet pipe. Install the 90° barbed fitting into the grommet as shown.

4) Install the airbox outlet pipe to the side of the APR airbox. Make sure the outlet pipe is oriented correctly before securing it with the five shorter 3mm allen screws and rubber washers. Tighten the five screws to 28 in-lbs (3.1 Nm).



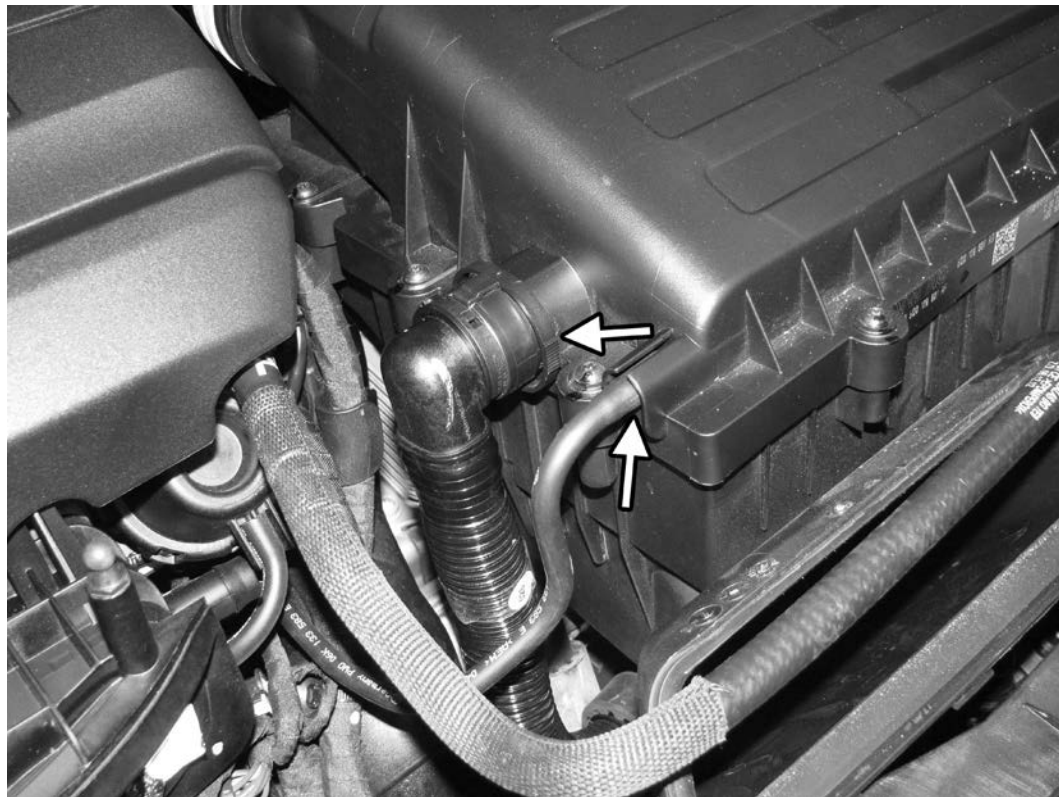
TL100190



5) Install the supplied air filter onto the inlet of the airbox outlet pipe. Secure the filter with the hose clamp, tightening it to 4Nm (35 in-lbs).

APR

6) Remove the vacuum line from the front right corner of the factory airbox by pulling it off. Then, if equipped, remove the connection to the secondary air pipe by pressing down on both sides of the fitting and pulling away from the airbox.



TL100190



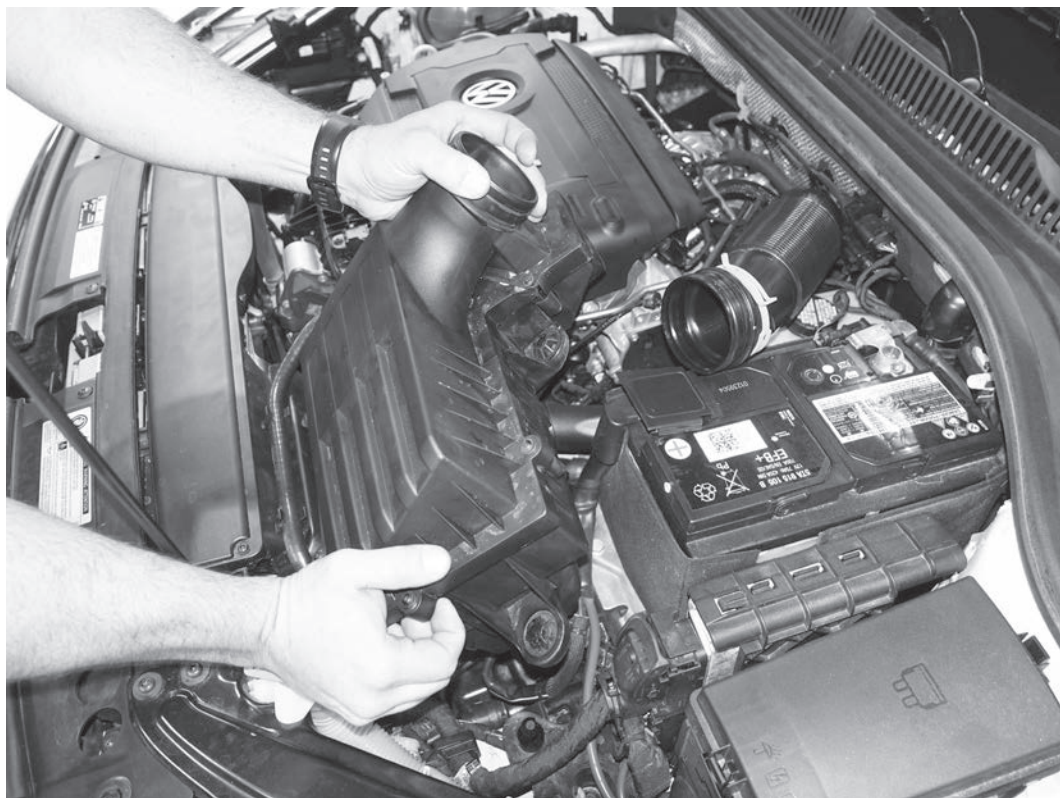
7) Loosen the spring clip that holds the factory inlet tube to the factory airbox, and slide the inlet tube off the airbox.

APR

8) Firmly lift up on the back and side of the factory airbox, separating it from the two rubber mounts on the left and back sides of the airbox.



TL100190

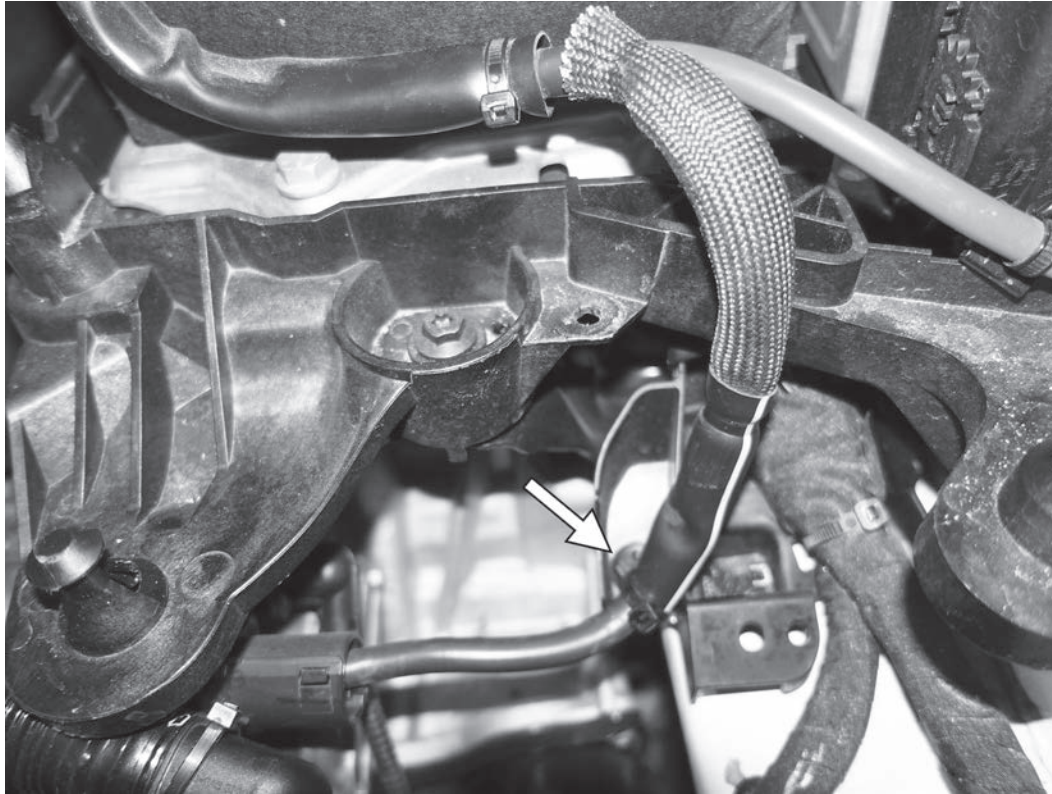


9) Rotate the back of the intake up, pulling off the last remaining rubber mount that is under the middle of the factory airbox, and remove the airbox from the car.

APR

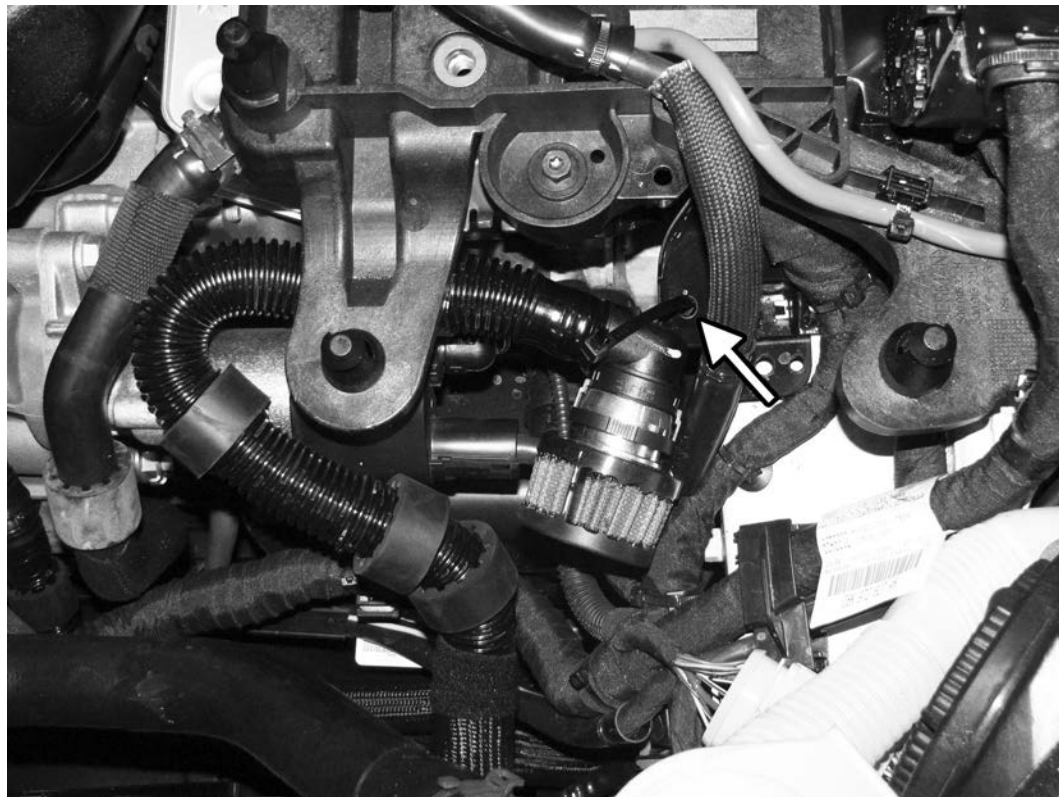
10) Cut and remove the two cable ties holding the battery cable to the bottom of the battery box. Remove the cable tie mounts from the battery box mounting points.



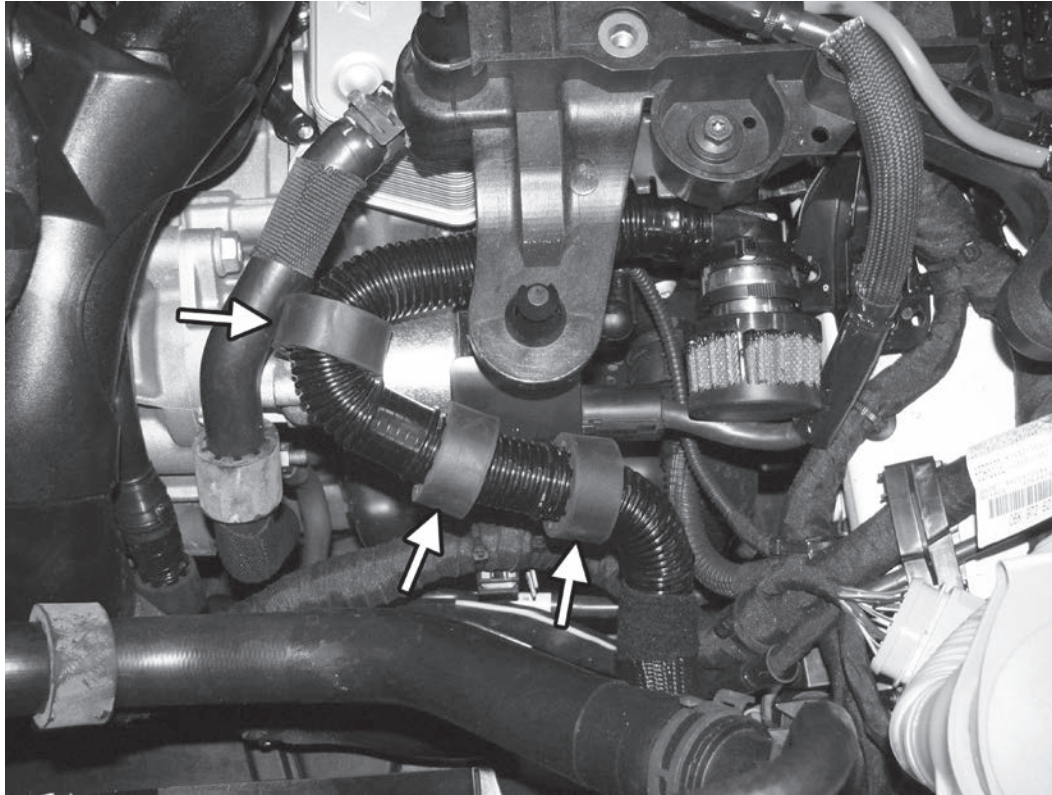


11) Raise the harness for the battery cable approximately 3 inches. With the supplied cable tie, reattach the battery cable to the previously used lower mounting point. This will allow the battery cable to sit closer to the battery, and out of the way of the APR intake.

12) Snap the secondary air filter to the factory fitting on the secondary air pipe. Bend the pipe down to tuck it out of the way and secure it with a cable tie.

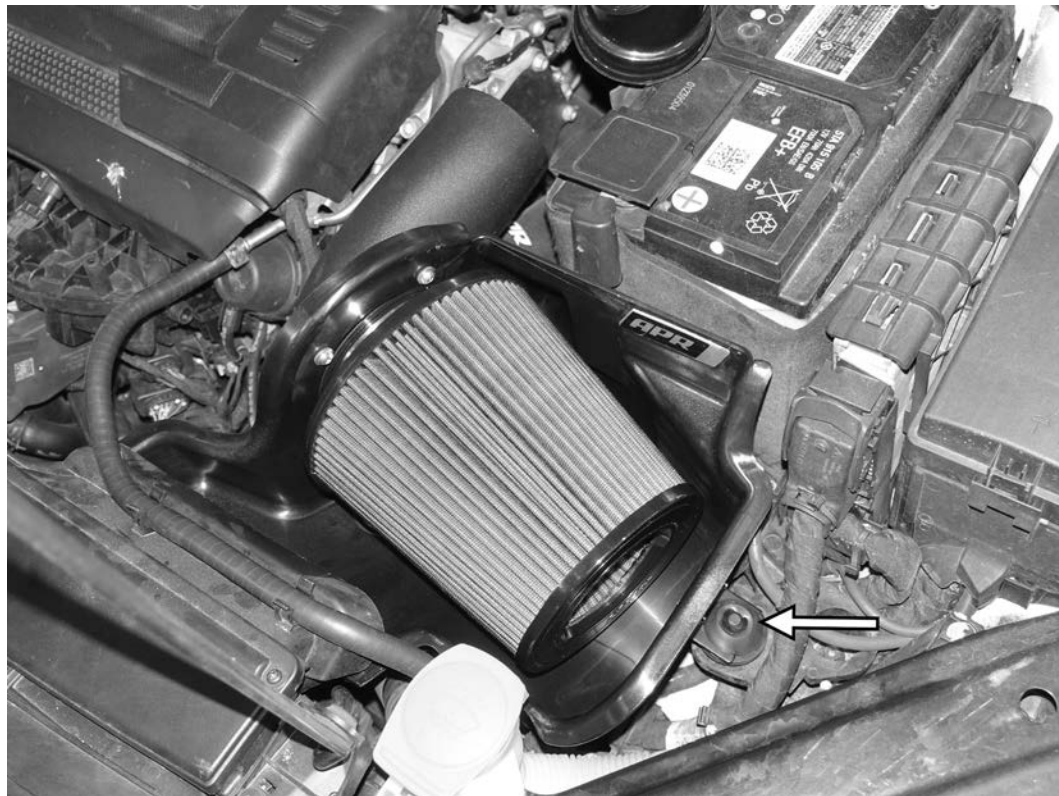


TL100190

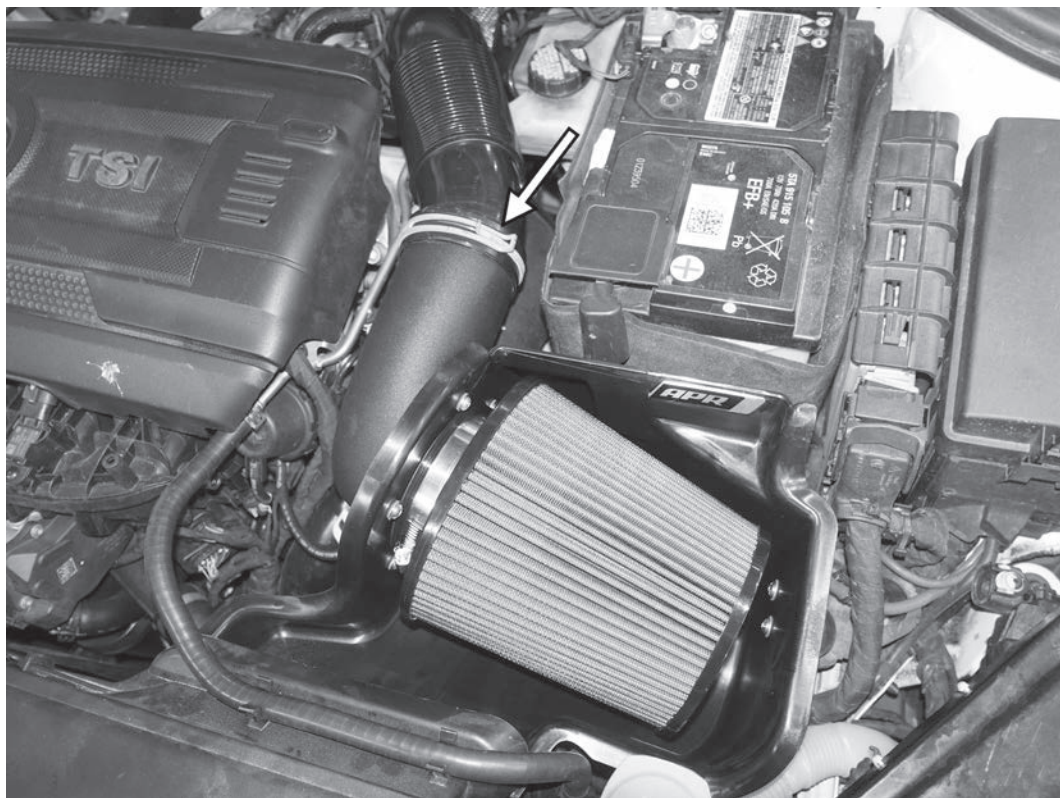


13) Adjust the three factory rubber bumpers on the secondary air pipe to keep the pipe from rubbing on the engine starter.

14) Place the APR intake in the car, ensuring the three rubber mounts connect to the three mounting posts the factory airbox was connected to.



TL100190



15) Reattach the factory intake tube to the back of the APR intake, and secure with the factory spring clamp.

APR

16) Connect the vacuum line that was on the right side of the factory airbox to the vacuum port on the bottom of the APR intake tube.



APR

#TL100190

GO APR.COM